

JOHNNY MERCER BLVD

N/F GEORGIA POWER  
PIN: 1-0044-05-001

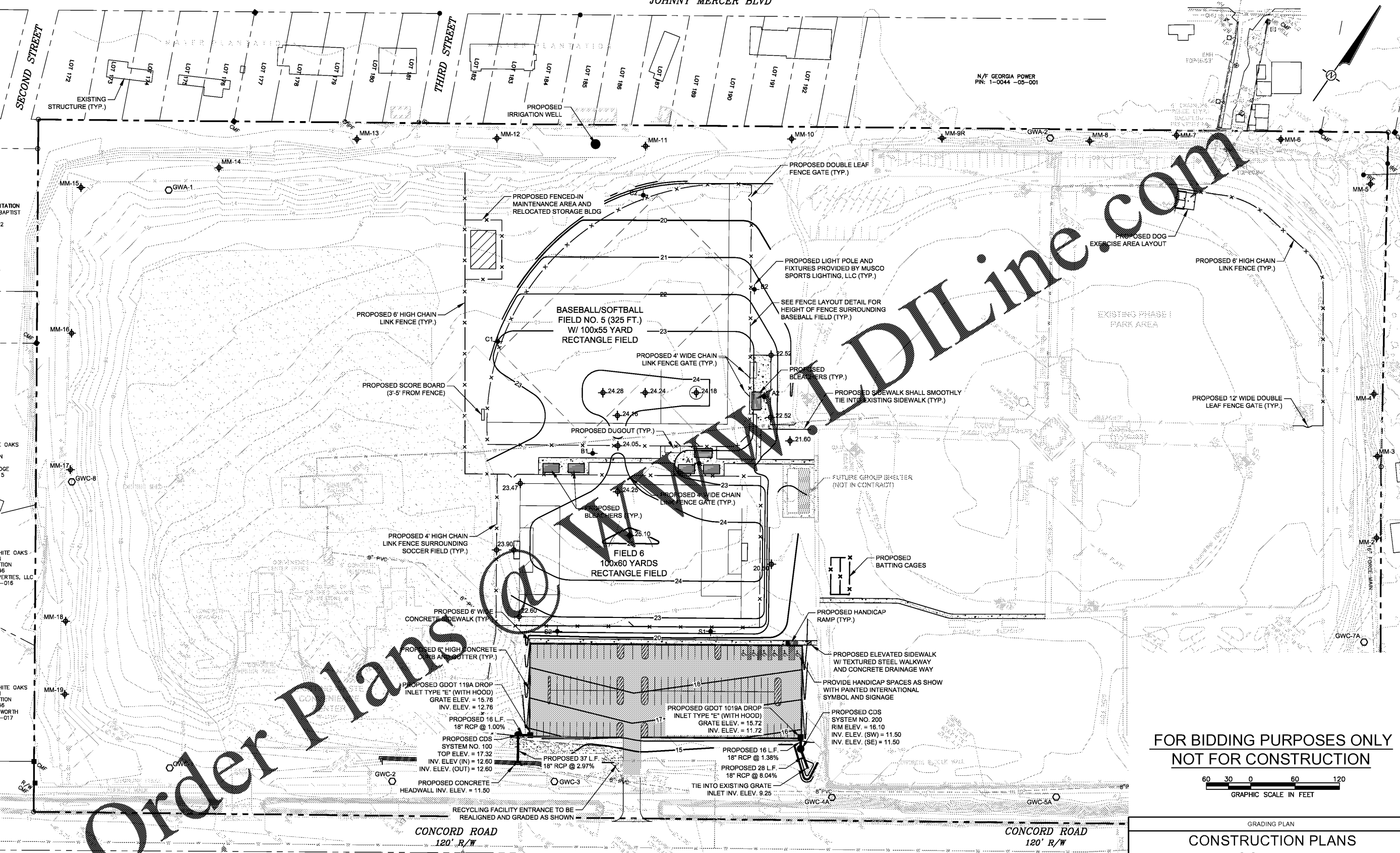
PORTIONS OF MAYER PLANTATION  
N/F: WILMINGTON ISLAND BAPTIST  
CHURCH, INC.  
PIN: 1-0060-04-002

PORTION OF LOT 7  
MAYER PLANTATION  
CHATHAM WATER COMPANY  
PIN: 1-0060-04-032

LOT 13  
RESUBDIVISION OF WHITE OAKS  
SUBDIVISION  
MAYER PLANTATION  
SMB G, PG 46  
N/F: DELORES ARLEDGE  
PIN: 1-0060-04-015

LOT 14  
RESUBDIVISION OF WHITE OAKS  
SUBDIVISION  
MAYER PLANTATION  
SMB G, PG 46  
N/F: WHITMARSH PROPERTIES, LLC  
PIN: 1-0060-04-016

LOT 15  
RESUBDIVISION OF WHITE OAKS  
SUBDIVISION  
MAYER PLANTATION  
SMB G, PG 46  
N/F: JIMMY BECKWORTH  
PIN: 1-0060-04-017



Order Plans @ [www.DIline.com](http://www.DIline.com)

FOR BIDDING PURPOSES ONLY  
NOT FOR CONSTRUCTION



**DISCLAIMER:**

1. THE DESIGN / ENGINEERING WORK SHOWN ON THIS SHEET IS EXCLUSIVELY BASED ON THE TOPOGRAPHY, EXISTING CONDITIONS, OR DESIGNS BY OTHERS AS REFERENCED. SHOULD ANY OF THE EXISTING CONDITIONS OR TOPOGRAPHY BE FOUND TO BE DIFFERENT OR CHANGED, THE DESIGN ENGINEER THAT PREPARED THIS PLAN SHOULD BE CONTACTED PRIOR TO CONSTRUCTING / IMPLEMENTING THIS DESIGN, AND TO DETERMINE IF DESIGN REVISIONS ARE REQUIRED.
2. THE ENGINEER THAT PREPARED THIS DRAWING HAS ASSUMED THAT THE CONSTRUCTION WILL BE PERFORMED IN ACCORDANCE WITH THE ENGINEERING INTENT AND COMPLETE CONSTRUCTION SPECIFICATIONS WILL BE PREPARED TO ACCOMPANY THE DRAWINGS. THE ENGINEER EXPECTS THAT HE WILL BE INVOLVED WITH PROVIDED AN OPPORTUNITY TO REVIEW AND INSPECT PRODUCTS AND CONSTRUCTION OF THE IMPROVEMENTS SHOWN ON THIS PLAN SHEET IN ORDER TO CONFIRM THAT THE CONSTRUCTION OF THE IMPROVEMENTS ARE INSTALLED IN ACCORDANCE WITH DESIGN CONCEPTS. SHOULD THE DESIGN ENGINEER NOT BE INVOLVED WITH CONSTRUCTION, HE WILL NOT BE LIABLE FOR CHANGES IN CONDITIONS OR FIELD CONDITIONS THAT MAY AFFECT THE DESIGN.

CALL FOR UTILITY LOCATIONS  
PRIOR TO ANY EXCAVATIONS  
1-800-282-7411



GRADING PLAN

**CONSTRUCTION PLANS**  
**CHARLIE BROOKS PARK - PHASE II**  
 SR 367 WILMINGTON ISLAND PH 2 - 025-058D(L)  
 FOR  
 CHATHAM COUNTY BOARD OF COMMISSIONERS  
 CHATHAM COUNTY, GEORGIA

**HHNT**  
 HODGES, HARBIN,  
 NEWBERRY & TRIBBLE, INC.  
 Consulting Engineers

(912) 298-0230 (PHONE)  
 (912) 298-0234 (FAX)

17 PARK OF COMMERCE  
 BOULEVARD, SUITE 110  
 SAVANNAH, GEORGIA 31405

PROJ. NO.	1705-038-01	DWG.	CB-PH2-6-GP
SCALE	1" = 60'		
DATE	AUGUST 2020		

SHEET 6 OF 19

APPROXIMATE LOCATION OF  
EXISTING STORMWATER POND