

JOHNNY MERCER BLVD

N/F GEORGIA POWER
PIN: 1-0044-05-001

PORTIONS OF MAYER PLANTATION
N/F: WILMINGTON ISLAND BAPTIST
CHURCH, INC.
PIN: 1-0060-04-002

PORTION OF LOT 7
MAYER PLANTATION
CHATHAM WATER COMPANY
PIN: 1-0060-04-032

LOT 13
RESUBDIVISION OF WHITE OAKS
SUBDIVISION
MAYER PLANTATION
SMB C, PG 46
N/F: DELORES ARLEDGE
PIN: 1-0060-04-015

LOT 14
RESUBDIVISION OF WHITE OAKS
SUBDIVISION
MAYER PLANTATION
SMB C, PG 46
N/F: WHITMARSH PROPERTIES, LLC
PIN: 1-0060-04-016

LOT 15
RESUBDIVISION OF WHITE OAKS
SUBDIVISION
MAYER PLANTATION
SMB C, PG 46
N/F: JIMMY BECKWORTH
PIN: 1-0060-04-017

EXISTING GROUNDWATER
MONITORING WELL (TYP.)

CONCORD ROAD
120' R/W

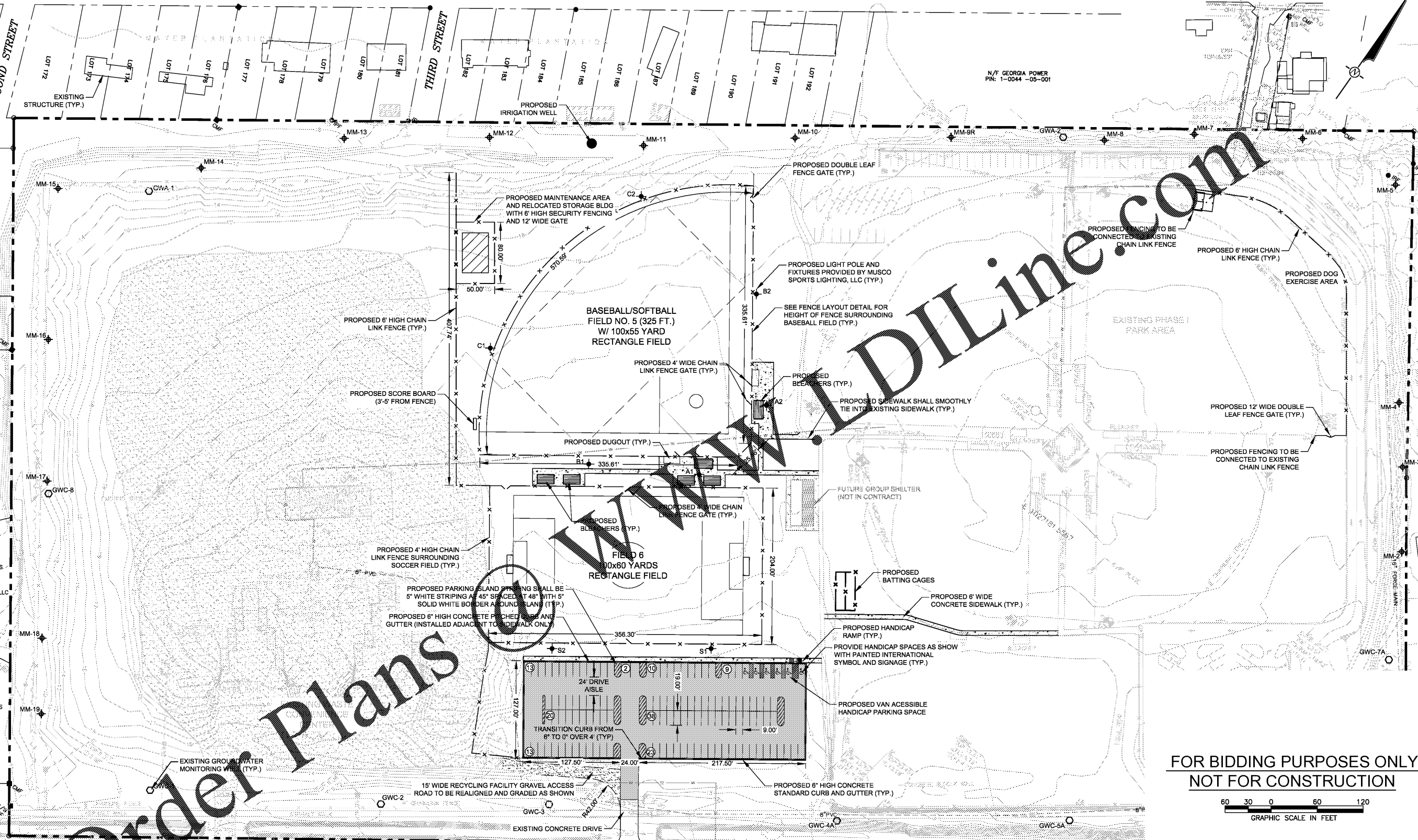
CONCORD ROAD
120' R/W

DISCLAIMER:

1. THE DESIGN / ENGINEERING WORK SHOWN ON THIS SHEET IS EXCLUSIVELY BASED ON THE TOPOGRAPHY, EXISTING CONDITIONS, OR DESIGNS BY OTHERS AS REFERENCED. SHOULD ANY OF THE EXISTING CONDITIONS OR TOPOGRAPHY BE FOUND TO BE DIFFERENT OR CHANGED, THE DESIGN ENGINEER THAT PREPARED THIS PLAN SHOULD BE CONTACTED PRIOR TO CONSTRUCTING / IMPLEMENTING THIS DESIGN, AND TO DETERMINE IF DESIGN REVISIONS ARE REQUIRED.
2. THE ENGINEER THAT PREPARED THIS DRAWING HAS ASSUMED THAT THE CONSTRUCTION WILL BE PERFORMED IN ACCORDANCE WITH THE ENGINEERING INTENT AND COMPLETE CONSTRUCTION SPECIFICATIONS WILL BE PREPARED TO ACCOMPANY THE DRAWINGS. THE ENGINEER EXPECTS THAT HE WILL BE INVOLVED WITH, PROVIDED AN OPPORTUNITY TO REVIEW, AND INSPECT PRODUCTS AND CONSTRUCTION OF THE IMPROVEMENTS SHOWN ON THIS PLAN SHEET IN ORDER TO CONFIRM THAT THE CONSTRUCTION OF THE IMPROVEMENTS ARE INSTALLED IN ACCORDANCE WITH DESIGN CONCEPTS. SHOULD THE DESIGN ENGINEER NOT BE INVOLVED WITH CONSTRUCTION, HE WILL NOT BE LIABLE FOR CHANGES IN CONDITIONS OR FIELD CONDITIONS THAT MAY AFFECT THE DESIGN.

Order Plans

WWW.DIline.com



FOR BIDDING PURPOSES ONLY
NOT FOR CONSTRUCTION



SITE LAYOUT AND LIGHTING PLAN

CONSTRUCTION PLANS
CHARLIE BROOKS PARK - PHASE II
 SR 367 WILMINGTON ISLAND PH 2 - 025-058D(L)
 FOR
 CHATHAM COUNTY BOARD OF COMMISSIONERS
 CHATHAM COUNTY, GEORGIA

HHNT
 HODGES, HARBIN,
 NEWBERRY & TRIBBLE, INC.
 Consulting Engineers

17 PARK OF COMMERCE
 BOULEVARD, SUITE 110
 SAVANNAH, GEORGIA 31405

(912) 298-0230 (PHONE)
 (912) 298-0234 (FAX)

PROJ. NO. 1705-038-01
 SCALE 1" = 60'
 DATE AUGUST 2020

DWG. CB-PH2-3-SP
 SHEET 3 OF 19

CALL FOR UTILITY LOCATIONS
 PRIOR TO ANY EXCAVATIONS
 1-800-282-7411

THREE WORKING DAYS BEFORE YOU DIG