

CAROL NELSON
 Drawn by:
 Approved by:
 Date:

Copyright © 2020
 GARMAT USA, LLC
 This drawing is not to be reproduced, either in whole or in part, without the permission of Garmat USA, LLC.

GARMAT USA
 FAX (303)781-2683
 PHONE (303)781-6802
 1401 W. STANFORD AVE.
 ENGLEWOOD, CO 80110

ALL EQUIPMENT IS DESIGNED EXPRESSLY FOR THE REMOVAL OF PARTICULATE MATTER ONLY. REDUCTION OF "VOLATILE ORGANIC COMPOUNDS" REQUIRES EITHER COATING REFORMULATION OR OPTIONAL, ADDITIONAL EQUIPMENT.



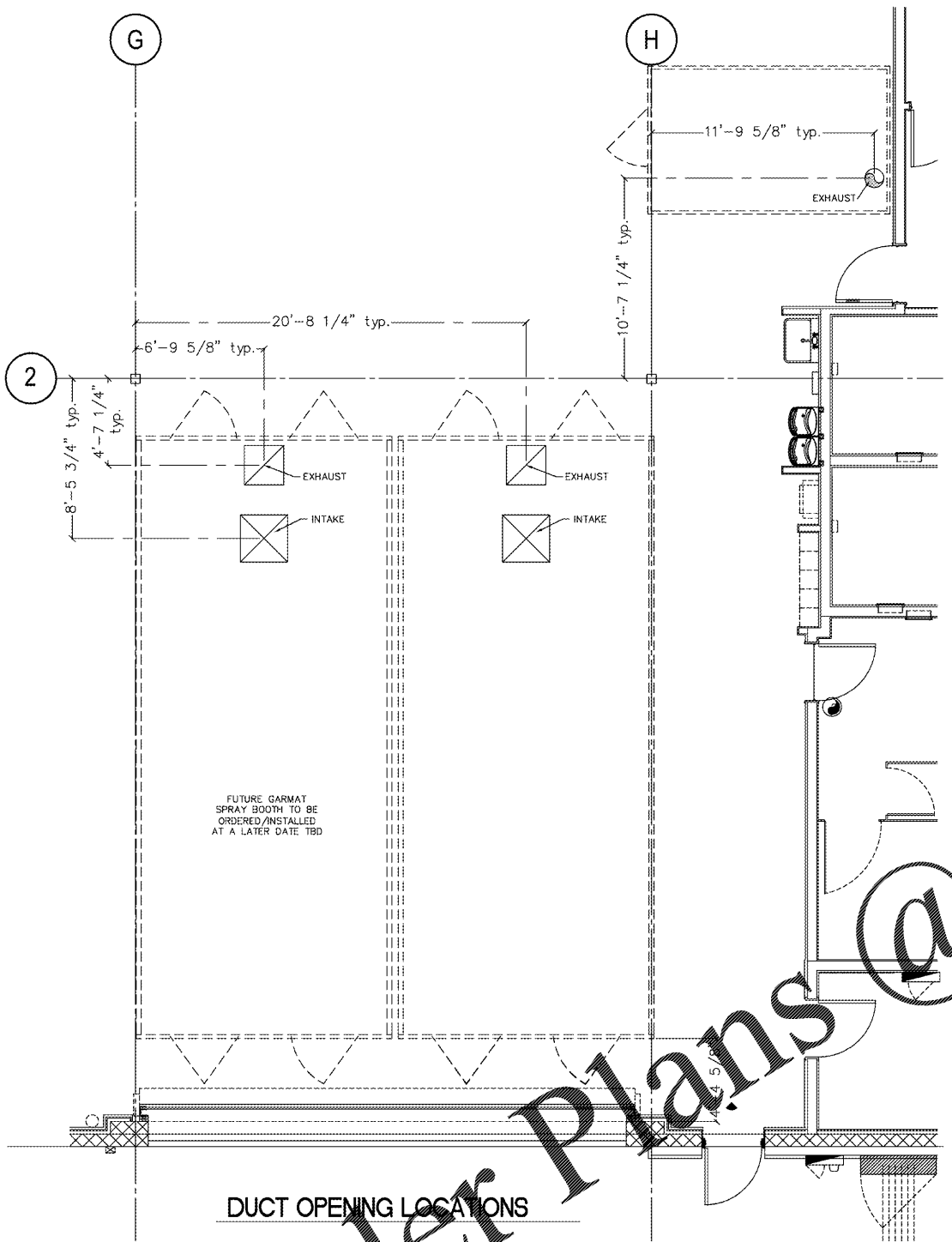
- SHOP DIMENSIONS BASED ON BEST AVAILABLE INFORMATION RECEIVED
- VERIFY EQUIPMENT MODEL NUMBERS IN DRAWING WITH EQUIPMENT ON ORDER
- FINAL LOCATION OF EQUIPMENT
- VERIFY ALL DIMENSIONS
- VERIFY PERMITS, NATIONAL and LOCAL CODES WITHIN JURISDICTION OF INSTALLATION SITE
- SPECIFICATIONS FOR PERMIT APPLICATION

EQUIPMENT ELEVATIONS AND DUCT OPENING LOCATIONS
CALIBER COLLISION
 LAKELAND, FL

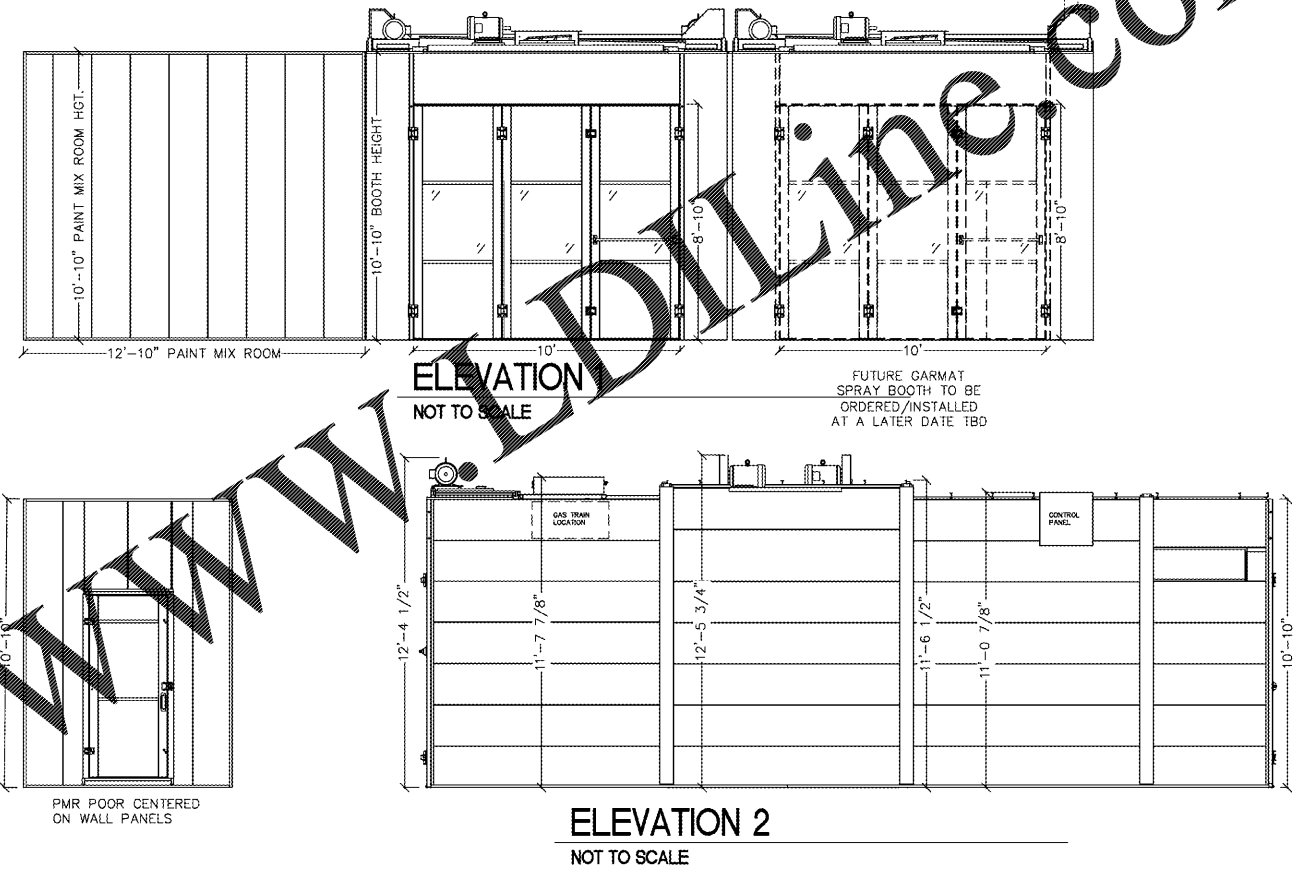
STATUS - PERMIT
 CUST. - 798
 REVISION - 0
 SHEET SIZE - D

DWG. NO. GAM798BC

DATE 7/22/2020 SHEET NO. B
 SCALE: 1/4"=1'



Suggested Duct Penetration Opening	Optional Duct Caps		Suggested Duct Penetration Opening	
	Intake	Exhaust	Intake	Exhaust
10hp/500fan	25in.sq.	25in.sq.	28in.sq.	28in.sq.
15hp/560fan	30in.sq.	25in.sq.	33in.sq.	28in.sq.
20-25hp/630fan	30in.sq.	25in.sq.	33in.sq.	28in.sq.
	32in.sq.	28.5in.sq.	35in.sq.	31.5in.sq.
	42in.sq.	32in.sq.	45in.sq.	35in.sq.



ALL DATA IS ISSUED FOR INFORMATION ONLY. YOU SHOULD USE THIS DATA FOR REFERENCE PURPOSES ONLY TO ASSIST IN COORDINATING YOUR WORK AND IS SUPPLEMENTARY TO FORMALLY ISSUED PAPER DRAWINGS. IN ALL INSTANCES THE CONTRACT DRAWINGS GOVERN. IT IS THE RESPONSIBILITY OF THE RECIPIENT TO CHECK ALL DIGITAL INFORMATION AGAINST THE CONTRACT DOCUMENTATION. GARMAT USA, LLC ACCEPTS NO LIABILITY OR RESPONSIBILITY FOR ANY LOSS DAMAGE SUFFERED AS A RESULT OF (OR IN CONNECTION WITH) THE USE OR MISUSE OF THE COMPUTER AIDED DESIGN (CAD) DATA SUPPLIED FOR INFORMATION ONLY. ONCE THE DATA IS INTRODUCED INTO YOUR OWN CAD OR OTHER SYSTEM, GARMAT USA, LLC CAN TAKE NO RESPONSIBILITY FOR ITS ACCURACY.