

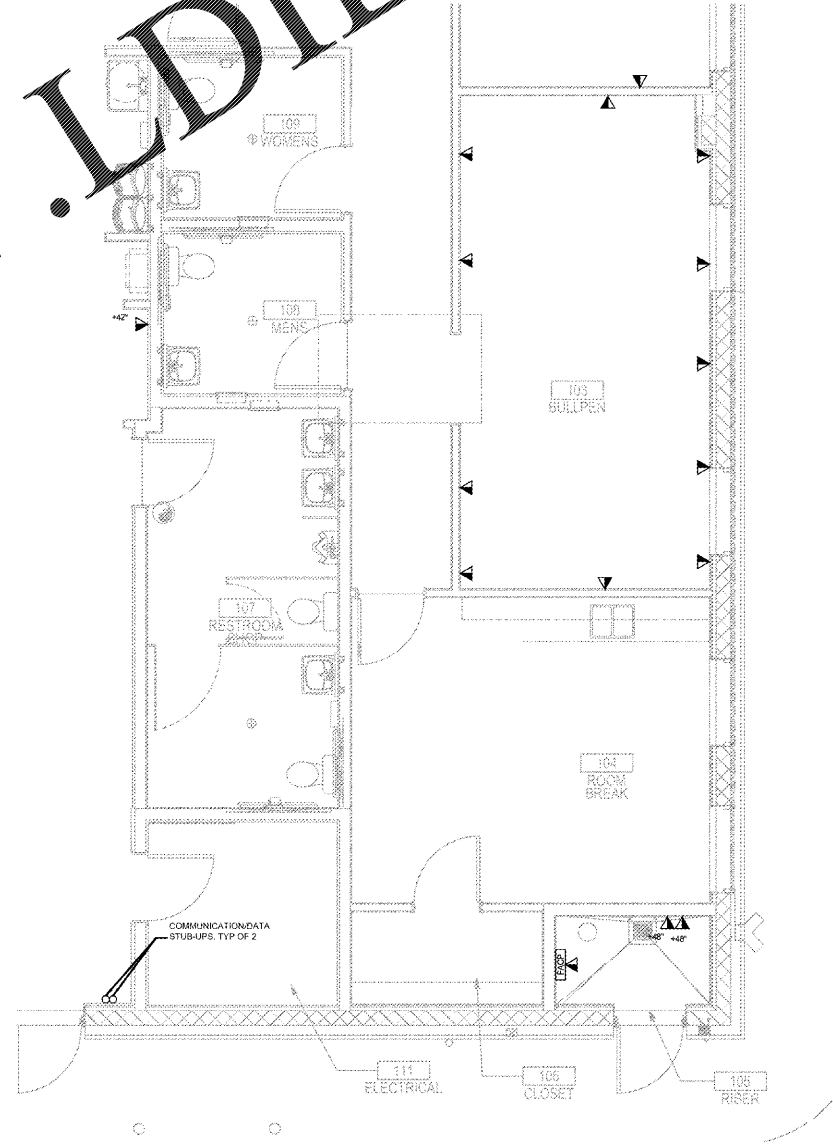
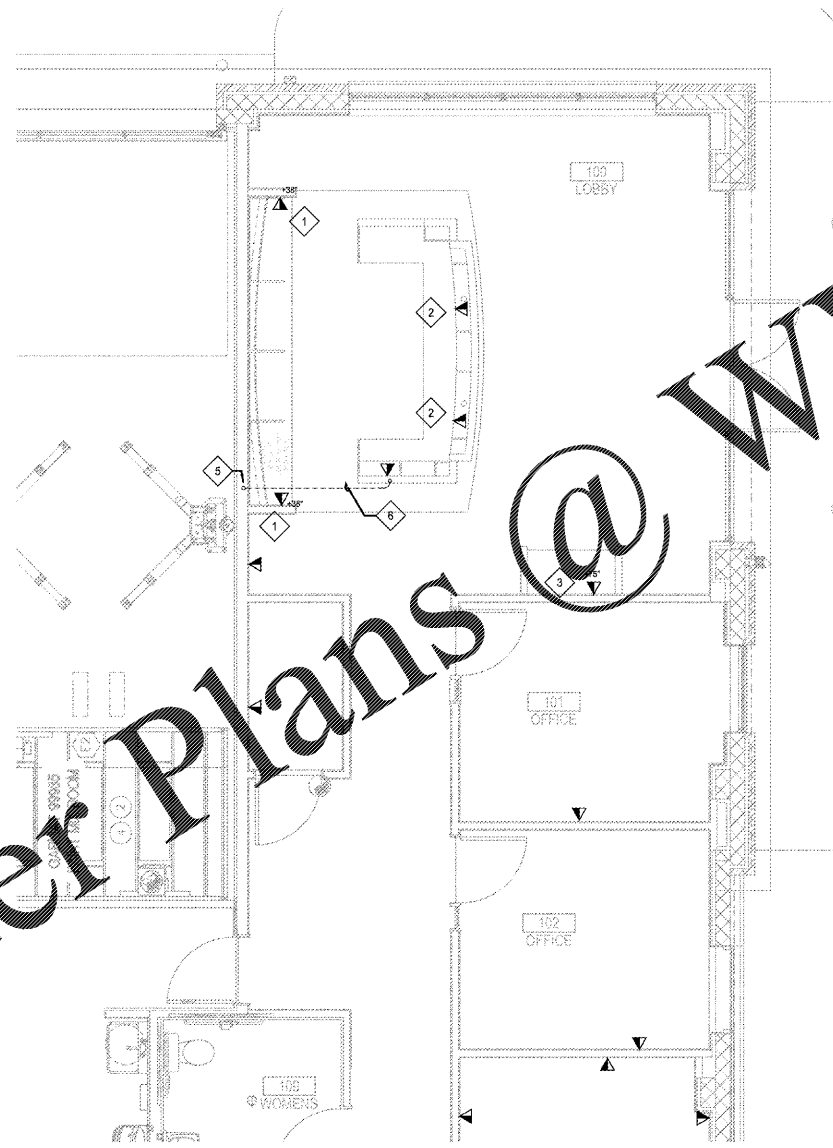
**GENERAL ELECTRICAL NOTES**

- A. ELECTRICIAN SHALL PROVIDE ALL CONDUITS WITH PULL STRINGS AS REQUIRED TO ALL DATA DROPS. ELECTRICIAN SHALL COORDINATE ALL CONDUIT RUNS WITH IT INSTALLER.

**ELECTRICAL NOTES BY SYMBOL "◇"**

- 1. MOUNT TELE/DATA CONNECTION BELOW COUNTER. VERIFY FINAL MOUNTING HEIGHT WITH ARCHITECT PRIOR TO ROUGH-IN.
- 2. VERIFY EXACT LOCATION TELE/DATA OUTLETS IN MILLWORK WITH OWNER, ARCHITECTURAL ELEVATIONS AND MILLWORK DRAWINGS.
- 3. TELE/DATA OUTLET TO BE MOUNTED 24" BELOW FINISH CEILING CENTERED OVER COFFEE BAR.
- 4. ALL CONDUITS AND WRING FOR BOOTH NOT TO BE INSTALLED TO FINAL LOCATIONS UNTIL INSTALLATION OF BOOTH. COORDINATE SCHEDULE AND EXACT LOCATION OF POWER WITH INSTALLATION WITH GARMAT REPRESENTATIVE.
- 5. PROVIDE (1) 2" CONDUIT FOR DATA TO ACCESSIBLE CEILING. COORDINATE CONDUIT ROUTING WITH MILLWORK. COORDINATE COMMUNICATIONS WIRING, CONDUIT REQUIREMENTS AND ANY FURTHER CLARIFICATION WITH OWNER AND IT MANAGER PRIOR TO ROUGH-IN.
- 6. ROUTE TELE/DATA CONDUIT UNDER CAB WITH ENOUGH CAPACITY TO FEED INDICATED OUTLETS AND PULL STRING. CONDUIT IS ADJACENT TO POWER CONDUIT.

THIS ITEM HAS BEEN DIGITALLY SIGNED AND SEALED BY DUSTIN M. VOGT, PE ON 08-10-2010 USING A DIGITAL SIGNATURE. PRINTED COPIES ARE NOT CONSIDERED SIGNED AND SEALED AND THE SIGNATURE MUST BE VERIFIED ON ANY ELECTRONIC COPIES.



Order Plans @ www.LDILine.com

**01 ENLARGED OFFICE PLAN**  
1/4"=1'-0"

**02 ENLARGED OFFICE PLAN**  
1/4"=1'-0"

**CALIBER COLLISION**

**olsson**  
1717 South Boulder Ave  
Suite 600  
Tulsa, OK 74119  
TEL 918.376.4294  
WWW.OSSON.COM

**timothy m. gallup**  
architect of record  
601 S. Boulder Ave, Suite 808  
Tulsa, Oklahoma 74119  
918.549.9600

NO.	DATE	BY	DESCRIPTION

**ENLARGED DATA PLANS**  
CALIBER COLLISION  
2300 GRIFPIN RD  
LAKELAND, FL  
PROJECT NO. 202022

FILE NAME: 192006  
DRAWN BY: SZK  
DATE: 08/19/2020  
REVIEWED BY: DMV

**E2.3**