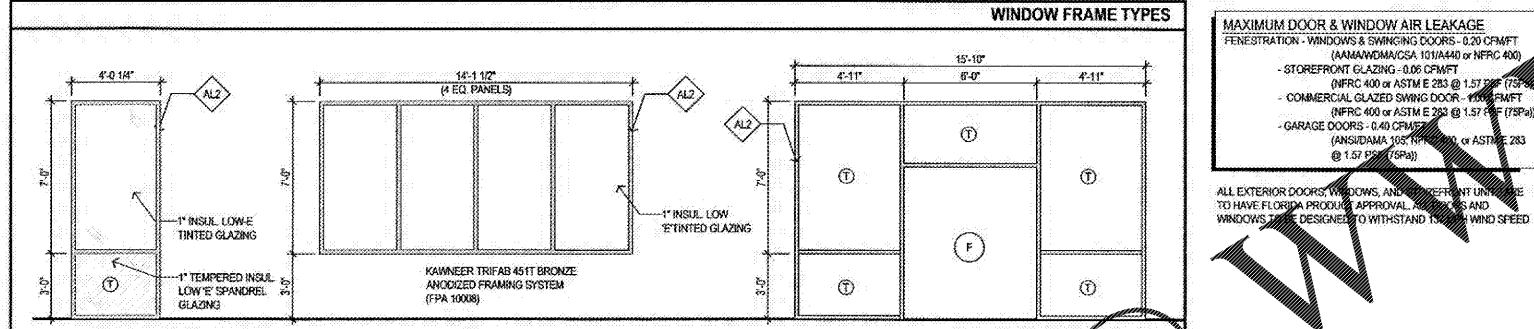
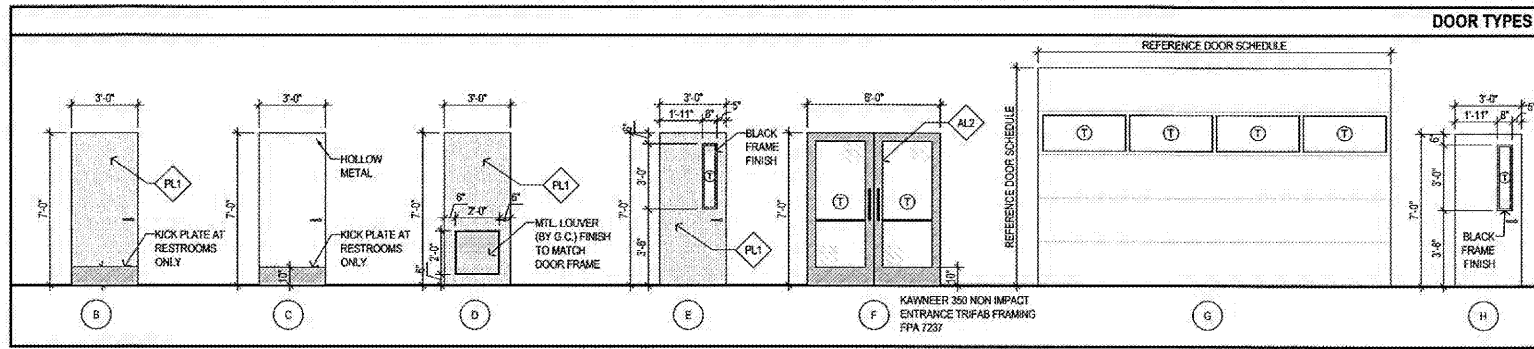
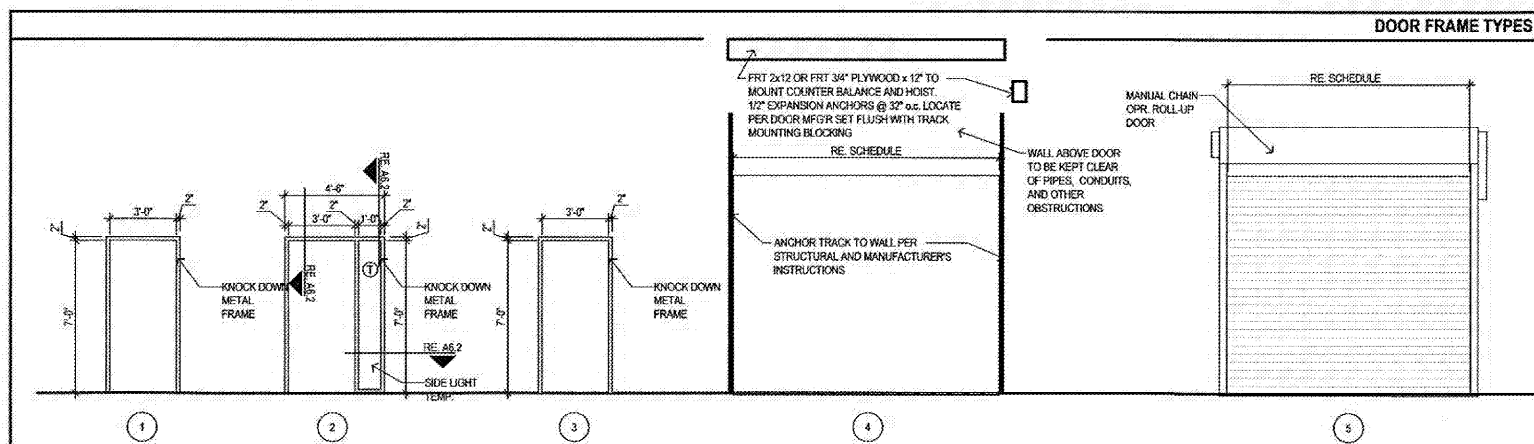


timothy m. gallup
architect of record
601 S. Boulder Ave., Suite 808
Tulsa, Oklahoma 74106
918.940.9600

NO.	DATE	BY	DESCRIPTION

DOOR & WINDOW SCHEDULES
CALIBER COLLISION
2100 GRIFFIN RD
LAKELAND, FL
PROJECT NO. 202002

FILE NAME: 202002
DRAWN BY:
DATE: 08/19/2020
REVIEWED BY: TMG



MAXIMUM DOOR & WINDOW AIR LEAKAGE
FENESTRATION - WINDOWS & SWINGING DOORS - 0.20 CFM/FT
(NANAWIND/CSA 101A40 or NFRC 400)
- STOREFRONT GLAZING - 0.06 CFM/FT
(NFRC 400 or ASTM E 283 @ 1.57 PSF (73)
- COMMERCIAL GLAZED SWING DOOR - 0.06 CFM/FT
(NFRC 400 or ASTM E 283 @ 1.57 PSF (73P))
- GARAGE DOORS - 0.40 CFM/FT
(ANSI/MAA 555-16 or ASTM E 283 @ 1.57 PSF (73P))

ALL EXTERIOR DOORS, WINDOWS, AND STOREFRONT UNITS TO HAVE FLORIDA PRODUCTION APPROVAL FOR WINDS AND WINDOWS TO BE DESIGNED TO WITHSTAND 150 MPH WIND SPEED

DOOR AND FRAME SCHEDULE

DETAIL REFERENCES REFER TO SHEET AS 2 U.N.O.

MARK	ROOM NAME	DOOR HARDWARE INDEX	TYPE	MATERIAL	QTY	NOMINAL SIZE			GLASS	FRAME		FIRE RATING (MINIMUM)	NOTES
						W	H	T		TYPE	MATERIAL		
100	LOBBY	SET#1	F	ALUM.	PR	6'-0"	7'-0"	1 3/4"	TEMPERED	C	ALUM.		2,3,11,19
101	OFFICE	SET#4	B	PLAM	1	3'-0"	7'-0"	1 3/4"	TEMPERED	2	HM		3,11,13
102	OFFICE	SET#4	B	PLAM	1	3'-0"	7'-0"	1 3/4"	TEMPERED	2	HM		3,11,13
103	BULLPEN	---	---	---	---	4'-0"	7'-0"	1 3/4"	---	---	---		18
104	BREAK ROOM	SET#6	E	PLAM	1	3'-0"	7'-0"	1 3/4"	TEMPERED	1	HM		3,11,13
105	FIRE RISER ROOM	SET#3	C	HM	1	3'-0"	7'-0"	1 3/4"	---	---	---		2,3,11,19
106	CLOSET	SET#8	B	PLAM	1	3'-0"	7'-0"	1 3/4"	---	---	---		3,13
107	SHOP RESTROOM	SET#10	C	HM	1	3'-0"	7'-0"	1 3/4"	---	---	---		10,15,18,22
108	MENS	SET#9	B	PLAM	1	3'-0"	7'-0"	1 3/4"	---	---	---		3,13
109	WOMENS	SET#9	B	PLAM	1	3'-0"	7'-0"	1 3/4"	---	---	---		3,13
110	IT	SET#5	D	PLAM	1	3'-0"	7'-0"	1 3/4"	---	---	---		
111	HALLWAY	SET#7	H	HM	1	3'-0"	7'-0"	1 3/4"	TEMPERED	1	HM	90 MIN.	3,5,22
112	ELECTRICAL	SET#8	C	SCM	1	3'-0"	7'-0"	1 3/4"	---	---	---		3,4,7,8
113A	WORKSHOP	S	STEEL	1	12'-0"	10'-0"	---	TEMPERED	---	---	---		1,6,8,12,
113B	WORKSHOP	C	HM	1	3'-0"	7'-0"	1 3/4"	---	---	---		4,10,14,19,21	
113C	WORKSHOP	G	STEEL	1	20'-0"	10'-0"	---	TEMPERED	---	---	---		1,6,8,12,23
113D	WORKSHOP	G	STEEL	1	20'-0"	10'-0"	---	TEMPERED	---	---	---		1,6,8,12,23
113E	WORKSHOP	G	STEEL	1	20'-0"	10'-0"	---	TEMPERED	---	---	---		1,6,8,12,23
113F	WORKSHOP	G	STEEL	1	20'-0"	10'-0"	---	TEMPERED	---	---	---		1,6,8,12,23
113G	WORKSHOP	G	STEEL	1	20'-0"	10'-0"	---	TEMPERED	---	---	---		1,6,8,12,23
113H	WORKSHOP	SET#2	C	HM	1	3'-0"	7'-0"	1 3/4"	---	---	---		4,10,14,19,21
113I	WORKSHOP	SET#2	C	HM	1	3'-0"	7'-0"	1 3/4"	---	---	---		4,10,14,19,21
113J	WORKSHOP	G	STEEL	1	20'-0"	10'-0"	---	TEMPERED	---	---	---		1,6,8,12,23
113K	WORKSHOP	G	STEEL	1	20'-0"	10'-0"	---	TEMPERED	---	---	---		1,6,8,12,23
113L	WORKSHOP	G	STEEL	1	20'-0"	10'-0"	---	TEMPERED	---	---	---		1,6,8,12,23
113M	WORKSHOP	G	STEEL	1	20'-0"	10'-0"	---	TEMPERED	---	---	---		1,6,8,12,23
113N	PAINT BOOTH	---	---	---	---	24'-5"	10'-0"	---	---	---	---		1,24
113P	WORKSHOP	SET#2	C	HM	1	3'-0"	7'-0"	1 3/4"	---	---	---		4,10,14,19,21
114	PART STAGING	---	---	---	---	---	---	---	---	---	---		
115	DETAIL	---	---	---	---	---	---	---	---	---	---		

DOOR NOTES

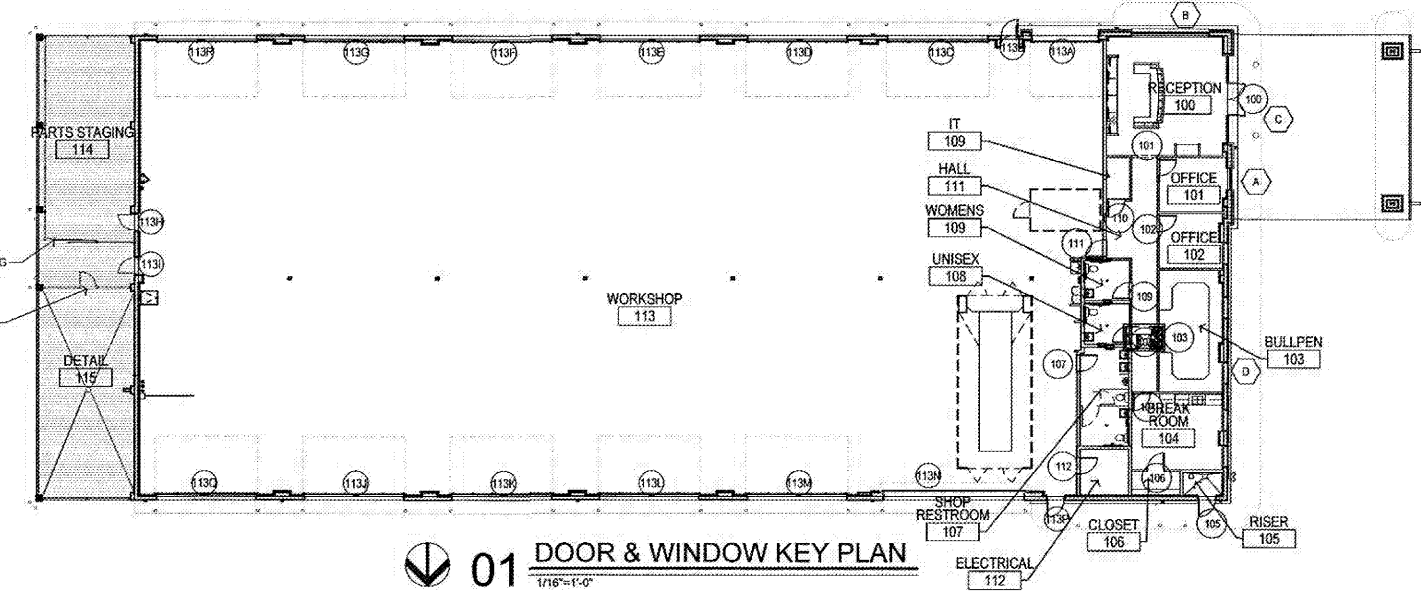
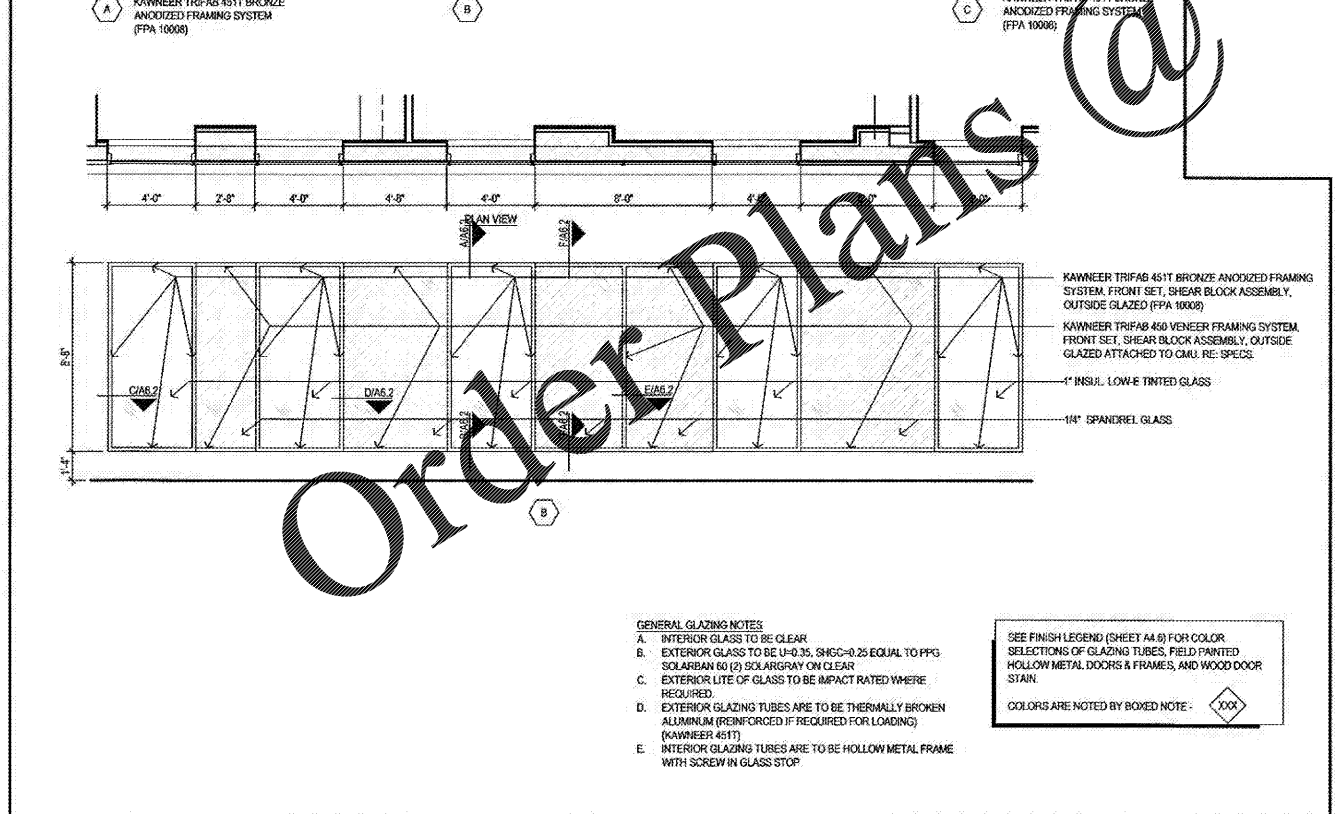
- SCHEDULED WIDTH AND HEIGHT ARE ROLLUP OPENING SIZE
- SIGNAGE: PROVIDE 1" HIGH LETTERS IN CONTRASTING COLOR ON TRACKS AND TEST TO READ "THIS DOOR TO REMAIN UNLOCKED DURING BUSINESS HOURS". SIGNAGE FURNISHED BY AND INSTALLED BY GENERAL CONTRACTOR.
- FINISH HARDWARE IS TO BE LEVER ACTION, APPROVED, COMMERCIAL GRADE TO MATCH SCHLAGE "C" KEY WAY OR APPROVED EQUAL AT ALL DOORS INCLUDING STOREFRONT SYSTEM AND ALL DOORS SHALL BE ON A MASTER KEY SYSTEM.
- ALL HOLLOW METAL DOORS AND FRAMES LOCKED IN THE WORKSHOP ARE PROVIDED AND INSTALLED BY THE GENERAL CONTRACTOR.
- GLAZING INSET TO MATCH OR EXCEED 1 HOUR MINUTE RATING.
- INSTALL LIFT TRACKS TO MAX ALLOWABLE HEIGHT.
- 1 1/2 HOUR "B" RATED DOOR FRAME
- PROVIDE DOOR STOPS
- SIGNAGE PER THE LOCAL FIRE MARSHAL REQUIREMENTS FOR THE FIRE RISER ROOM
- DOOR TO BE KEYPAD ALIKE AND KEYPAD TO THE MASTER KEY.
- DOOR TO BE KEYPAD ALIKE AND KEYPAD TO THE MASTER KEY.
- INSTALL OVERHEAD DOOR TO INCLUDE LOW "E" GLAZING PANELS (REFER SPECIFICATIONS)
- DOOR IS GLAZED WITH THE SPECIFIED PLASTIC LAMINATE
- GLAZING FRAMES TO BE FIELD PAINTED AT THE EXTERIOR TO MATCH (PT3) AND INTERIOR TO BE PAINTED TO MATCH (PT4)
- GLAZING FRAMES TO BE FIELD PAINTED (PT4) AT THE EXTERIOR AND INTERIOR
- INSTALL POWER OPERATED OPENER
- DOOR EXTERIOR PER FIRE MARSHAL REQUIREMENTS
- LABEL DOOR EXTERIOR AS "NOT AN EXIT" PER FIRE MARSHAL REQUIREMENTS
- LABEL DOOR PER LOCAL CODE REQUIREMENTS
- LABEL DOOR PER LOCAL CODE REQUIREMENTS
- THE TWO MAIN OH DOORS NEED AUTOMATIC OPENERS WITH PUSH BUTTON INSIDE, KEYPAD OUTSIDE WITH REMOTES TO ALSO BE PROVIDED.
- MTL DRIP CAP TO BE PROVIDED BY MTL BLDG PROVIDER AT ALL EXTERIOR HM DOOR OPENINGS.
- IN ORDER TO COMPENSATE FOR PLYWOOD, DOOR JAMB DEPTHS SHOULD BE A MIN. OF 6" TYPICAL SIZE FOR OTHER DOORS IS 6" IN WORKSHOP AREA
- ALL OH DOORS TO BE A WHITE FACTORY FINISH ON INSIDE, OUTSIDE TO BE AS INDICATED
- OVERHEAD COLLING DOOR RATED FOR 139 MPH WIND LOAD WITH CHAIN HOIST AND WEATHER SEALS. DOOR EQUAL TO COPY 160-MPH W TRACK, SUPPORTS, LOCK, PULL, FLOOR SEAL, WEATHERSTRIPPING.

WINDOW NOTES

- EXTERIOR ANNOZED. ALUM. STOREFRONT AS SPECIFIED W/ 1" INSULATED GLASS / REF TO GLASS SPECIFICATION IN PROJECT MANUAL AND REQUIRED "SHCO" ON CODE DATA SHEET.
- PROVIDE TEMPERED SAFETY GLASS WHERE SHOWN WITH THIS SYMBOL (T) OR WHERE NOTED BY CODE.
- REF. ELEVATIONS FOR DOOR LOCATIONS

MATERIAL KEY

MARK	DESCRIPTION
ALUM	ALUMINUM
CL	CHAIN LINK
HM	HOLLOW METAL
HM-STL	HOLLOW METAL STEEL
CM	ORNAMENTAL METAL
SP	STEEL PIPE
PR	PAIR
(T)	TEMPERED GLASS
STL	STEEL
KD	KNOCK DOWN



01 DOOR & WINDOW KEY PLAN
1/16"=1'-0"