

timothy m. gallup  
architect of record  
601 S. Boulder Ave., Suite 808  
Tulsa, OK 74119  
Tel: 918.493.9800  
www.tmgarchitect.com

NO.	DATE	BY	DESCRIPTION

**CALIBER COLLISION**  
2100 GRIFFIN RD  
LAKELAND, FL  
PROJECT NO. 202002

FILE NAME: 202002  
DRAWN BY:  
DATE: 09/18/2020  
REVIEWED BY: TMG

LEGEND		SHEET NOTES	
CARPET (CPT)		CERAMIC TILE (CT1)	
SEALED CONCRETE (CONC) *REF. SPECIFICATIONS		VINYL COMPOSITION TILE (VCT)	

**FLOOR FINISH PROTECTION**  
PROVIDE PROTECTIVE COVER MATERIAL OVER FLOOR TILE AND CARPET AFTER INSTALLATION TO PROTECT FROM DAMAGE UNTIL JUST BEFORE SUBSTANTIAL COMPLETION INSPECTION.

**PAINT FINISH**  
PAINT FINISH SHALL BE SMOOTH, UNIFORM, AND WITHOUT RUNS, DRIPS, BRUSH OR ROLLER MARKS AND ANY BLEMISHES.

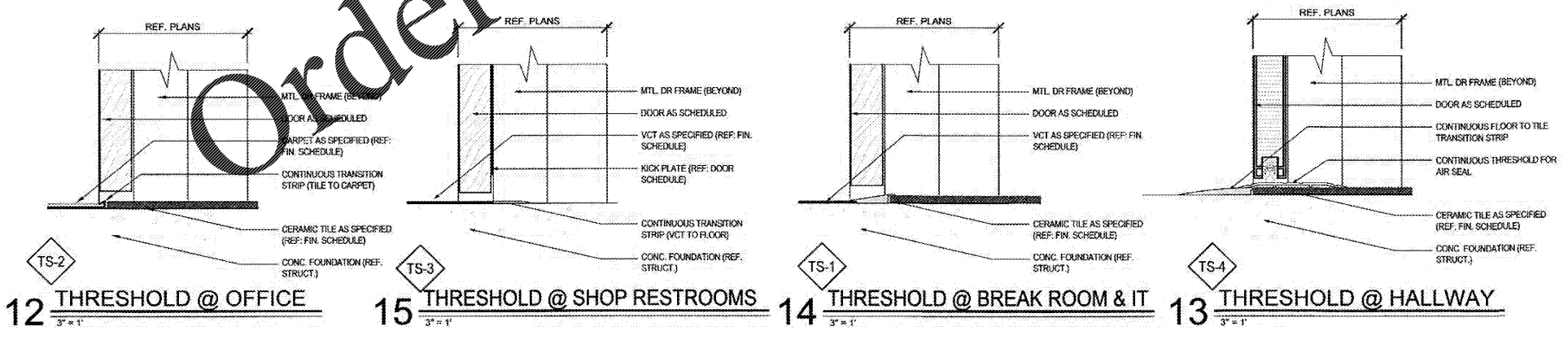
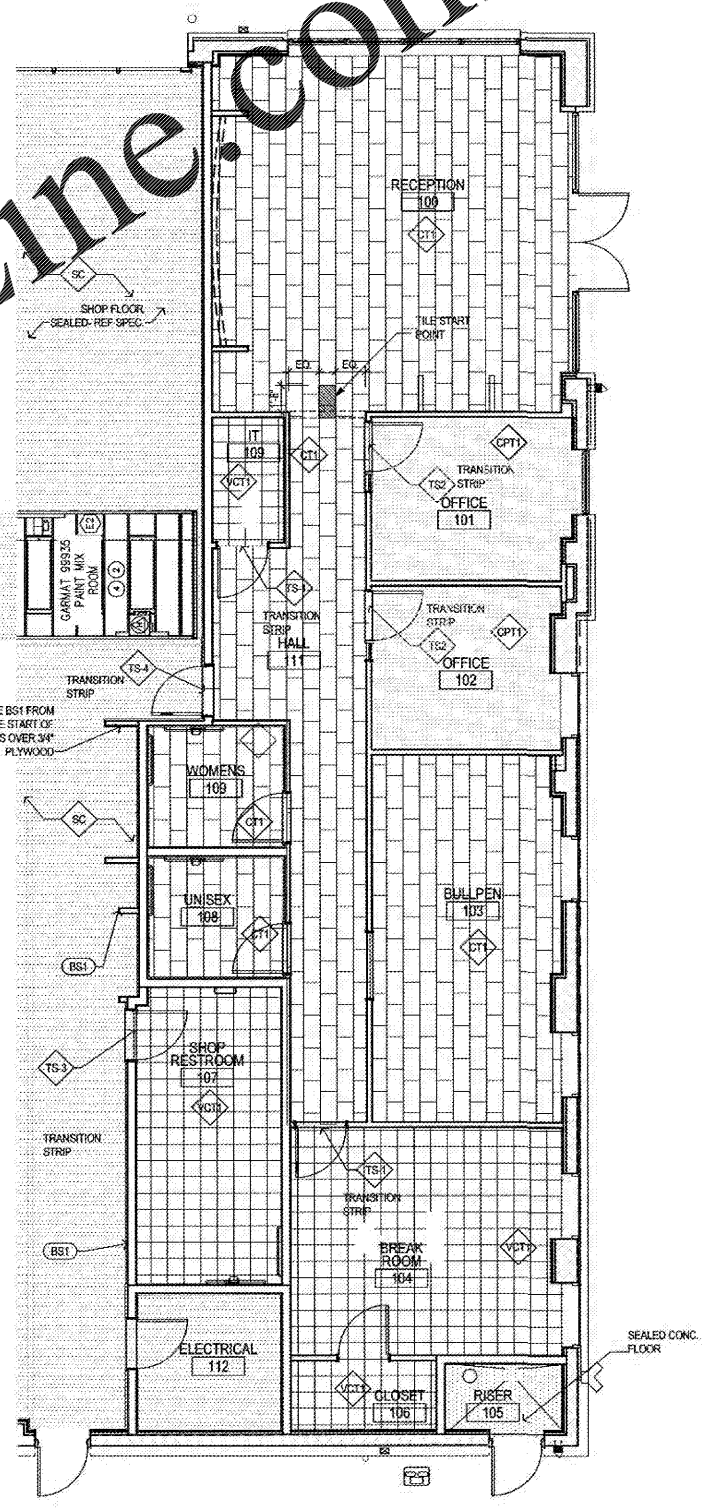
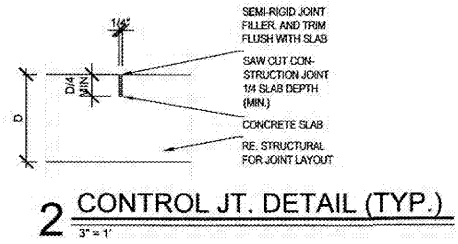
**NOTE**  
PROVIDE LEVEL 5 GYPSUM BOARD AT RECEPTION (100), HALLWAY (106), AND CURVED BRANDING WALL.

**NOTE**  
PROVIDE LEVEL 5 GYPSUM BOARD AT RECEPTION 100, HALLWAY 106, AND CURVED BRANDING WALL.

**PAINT FINISH**  
PAINT FINISH SHALL BE SMOOTH, UNIFORM AND WITHOUT RUNS, DRIPS, BRUSH OR ROLLER MARKS AND ANY BLEMISHES.

**FLOOR FINISH PROTECTION**  
PROVIDE PROTECTIVE COVER MATERIAL OVER FLOOR TILE AND CARPET AFTER INSTALLATION TO PROTECT FROM DAMAGE UNTIL JUST BEFORE SUBSTANTIAL COMPLETION INSPECTION.

**WORKSHOP TO BE TREATED WITH CONCRETE SEALER**



Order Plans @ www.IDIline.com