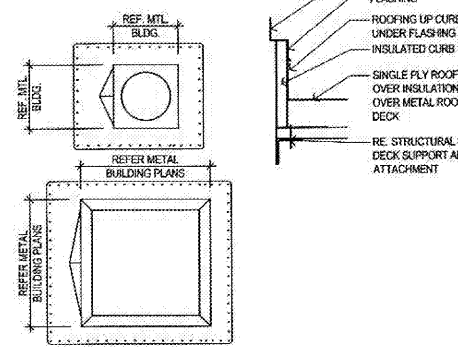
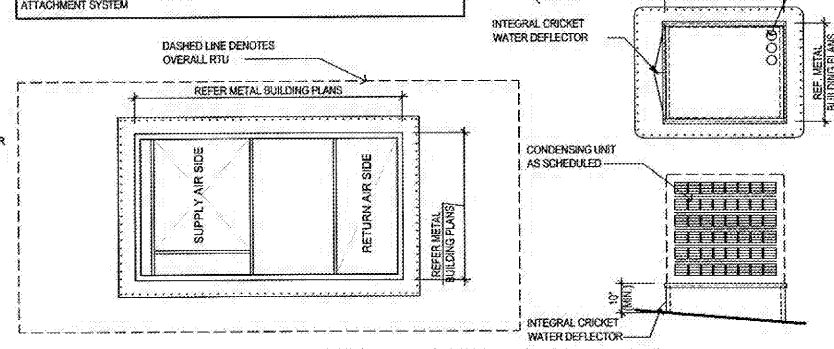


NOTE
RTU CURBS, VENTILATION CURBS AND BOOTH VENT CURBS TO BE PROVIDED BY G.C.



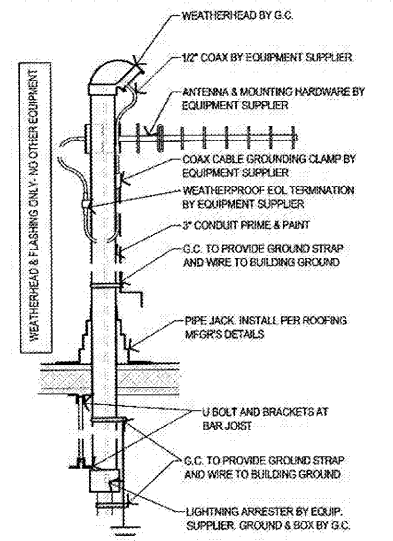
04 BOOTH VENT CURB (TYP)
1/2" = 1'-0"

NOTE
RTU CURBS, CONDENSING UNIT PLATFORM, AND BOOTH VENT STACK CURBS TO BE PROVIDED BY G.C. SEE SPECIFICATIONS.
CURBS TO HAVE FLORIDA PRODUCT APPROVED ATTACHMENT OR ENGINEERED ATTACHMENT SYSTEM

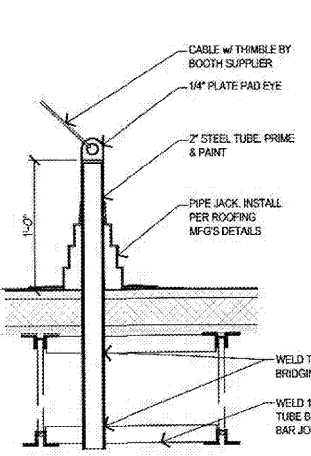


03 RTU CURB & COND. PLATFORM
3/8" = 1'-0"

WEATHERHEAD AND GROUNDING BY G.C. ANTENNA, EQUIPMENT, AND COAX BY SUPPLIER. COORDINATE LOCATION AND HEIGHT OF MAST ABOVE PARAPET WITH EQUIPMENT SUPPLIER.



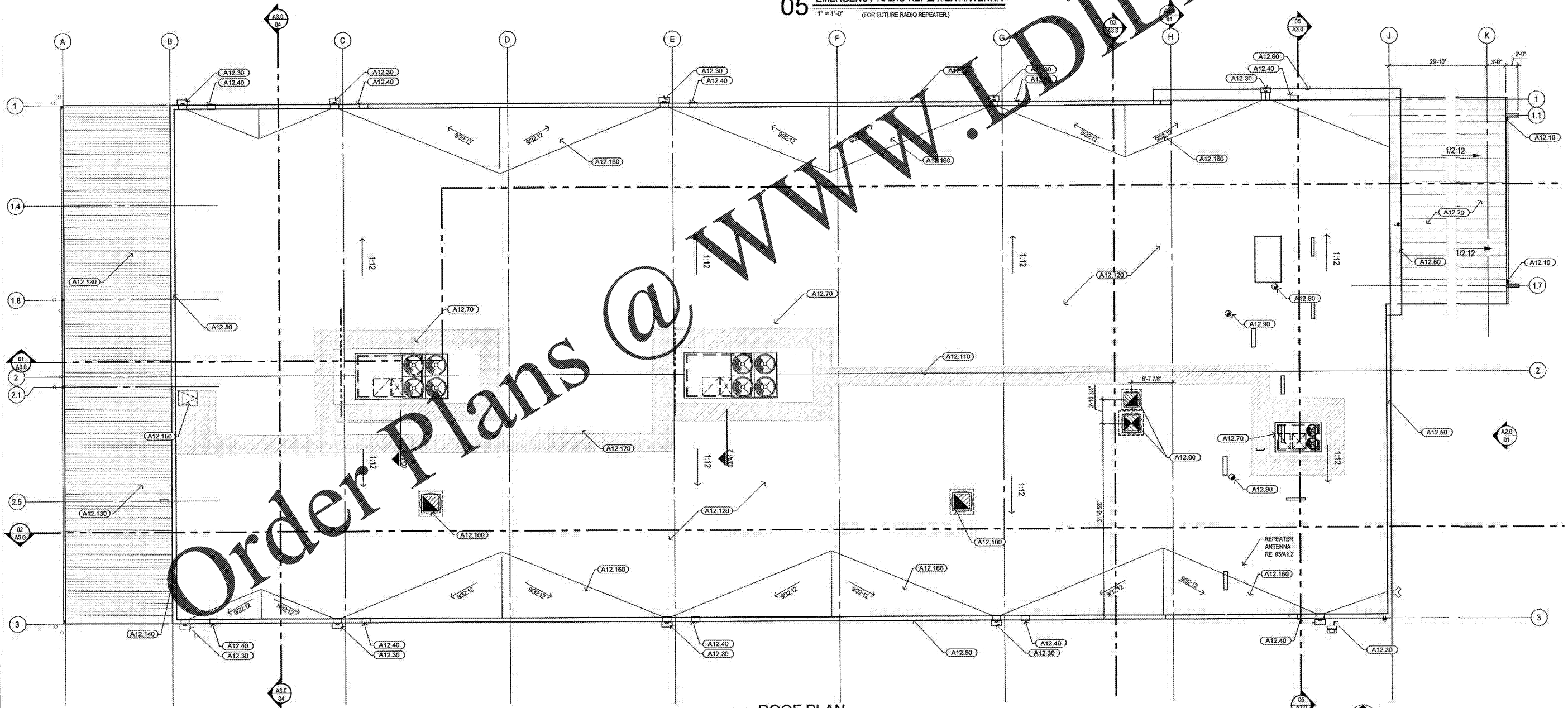
05 EMERGENCY RADIO REPEATER ANTENNA
1" = 1'-0" (FOR FUTURE RADIO REPEATER)



02 SUPPORT CABLE ANCHORAGE
1" = 1'-0"

- KEY NOTES**
- (A12.10) 5" BOX GUTTER SYSTEM w. 3/4" DOWN SPOUTS. PRE-FINISHED METAL (BURNISHED SLATE)
 - (A12.20) PRE-FINISHED STANDING SEAM METAL BUILDING ROOF PANELS (SADDLE TAN)
 - (A12.30) 16"x4" SCUPPER w/ PRE-FINISHED METAL CONDUCTOR HEAD AND 4/8" DOWN SPOUT (BURNISHED SLATE)
 - (A12.40) PRE-FINISHED METAL EMERGENCY OVERFLOW 16"x4" PROJECT 1" FROM FACE OF WALL
 - (A12.50) PRE-FINISHED TAPERED SHEET METAL COPING (BURNISHED SLATE)
 - (A12.60) PRE-FINISHED TAPERED SHEET METAL COPING (SADDLE TAN) OVER CORNICE
 - (A12.70) RTU WITH CURB, RE. 03/A1.2 (RE. MEP)
 - (A12.80) PAINT BOOTH CURBS (BY G.C.) COORDINATE SIZE AND LOCATION WITH THE PAINT BOOTH VENDOR. RE. 02/A1.2
 - (A12.90) MISCELLANEOUS VENT (BOOTS TO BE PROVIDED BY THE G.C.)
 - (A12.100) ROOF VENTS AND FANS (BY G.C.) WITH CURBS, RE. 04/A1.2 (RE. MEP)
 - (A12.110) RIDGE
 - (A12.120) SINGLE PLY TPO ROOF WITH 1/4:12 SLOPE CRICKETS IN 1/4:12 SLOPING ROOF DECK
 - (A12.130) PRIME & PAINT STRUCTURAL METAL DECK, PAINT FT3
 - (A12.140) PROVIDE PRE-FINISHED METAL FLASHING/CLOSURE
 - (A12.150) ROOF ACCESS HATCH, RE. SPECS
 - (A12.160) 1/2" TAPERED INSULATION ON ROOF INSULATION OVER COPING METAL DECK
 - (A12.170) WALKING SURFACE PER ROOFING MFR.

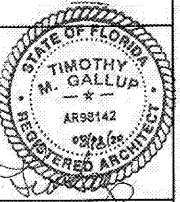
SHEET NOTES
ALL DIMENSIONS NOTED OR SHOWN ARE TAKEN FROM FACE OF STUDY/RTU UNLESS NOTED OTHERWISE



01 ROOF PLAN
1/8" = 1'-0"

Order Plans @ WWW.DIline.com

CALIBER COLLISION



timothy m. gallup
architect of record
601 S. Boulder Ave., Suite 808
Tulsa, OK 74116
918.946.9900

NO.	DATE	BY	DESCRIPTION

ROOF PLAN
CALIBER COLLISION
2100 GRIFFIN RD
LAKELAND, FL
PROJECT NO. 202002

FILE NAME: 202002
DRAWN BY:
DATE: 06/19/2020
REVIEWED BY: TMG