

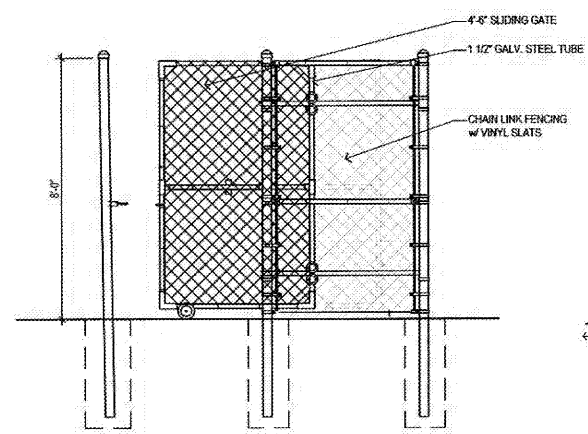


timothy m. gallup  
architect of record  
601 S. Boulder Ave., Suite 908  
Tulsa, Oklahoma 74116  
918-544-8800

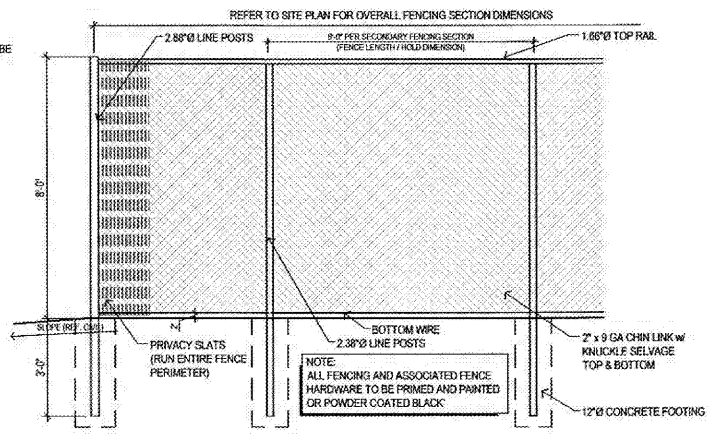
NO.	DATE	BY	DESCRIPTION

**SITE DETAILS**  
**CALIBER COLLISION**  
 2100 GRIFFIN RD  
 LAKELAND, FL  
 PROJECT NO. 202002

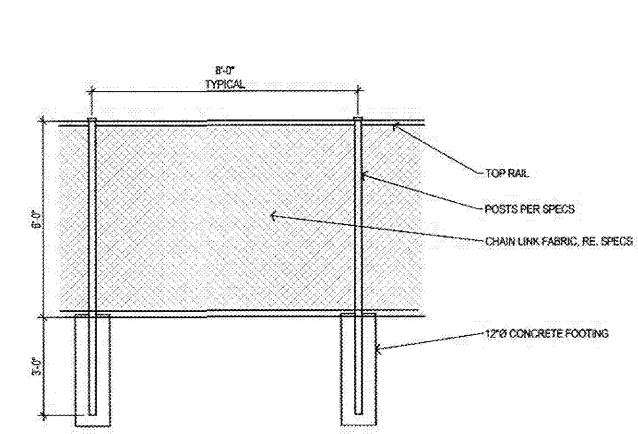
FILE NAME: 202002  
 DRAWN BY:  
 DATE: 08/19/2020  
 REVIEWED BY: TMG



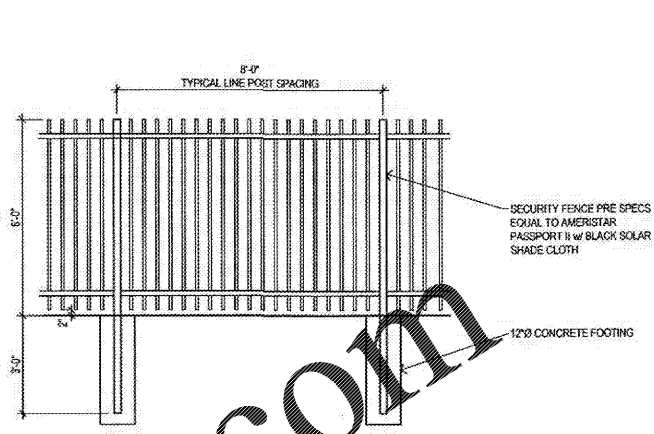
**04 PARTS STORAGE GATE**  
3/8"=1"



**03 PARTS STORAGE FENCE**  
3/8"=1"

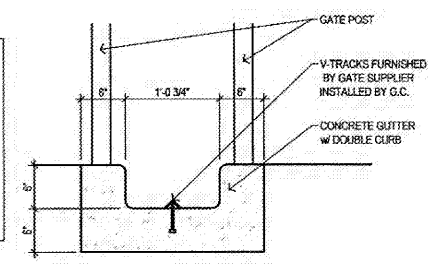


**02 CHAIN LINK FENCE**  
3/8"=1"

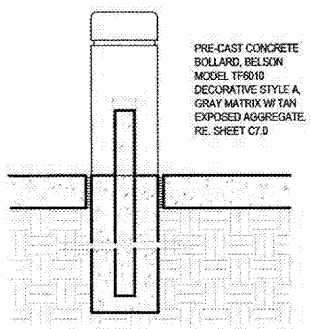


**01 DECORATIVE BAR FENCE**  
3/8"=1"

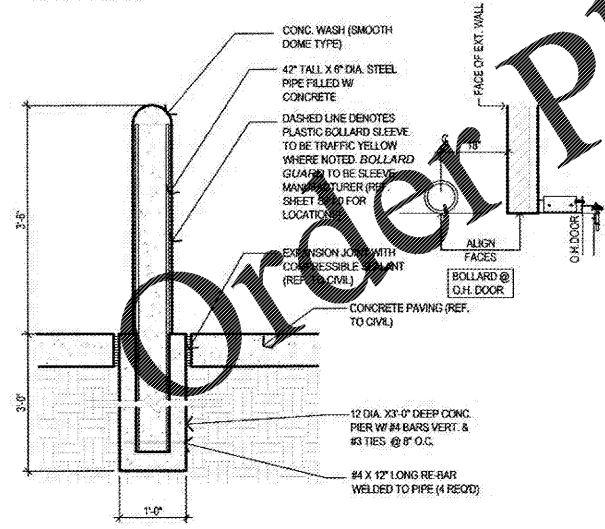
- FENCING NOTES:**
- GATES SHOWN ARE TO BE SCHEMATIC. REFER TO GATE MANUFACTURER FOR STANDARD DETAILS, AND INSTALLATION PROCEDURES.
  - CHAIN LINK FENCING, POSTS, AND RAILS ARE TO BE POWDER COATED BLACK WITH CHARCOAL GRAY VINYL PRIVACY SLATS.
  - DECORATIVE TUBE FENCING AND GATES ARE TO BE POWDER COATED BLACK.



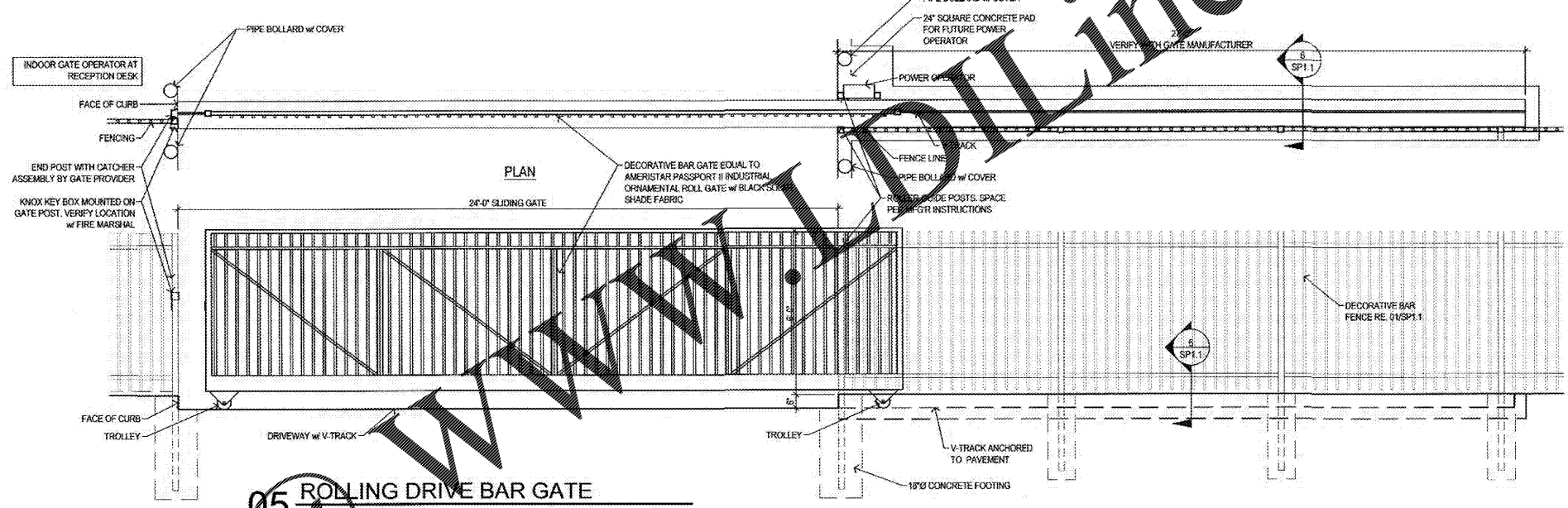
**06 SLIDING DRIVE GATE**  
1"=1'-0"



**09 PRE-CAST BOLLARD**  
3/4"=1'-0"



**08 BOLLARD DETAIL**



**05 ROLLING DRIVE BAR GATE**

Order Plans @ [www.tmgonline.com](http://www.tmgonline.com)