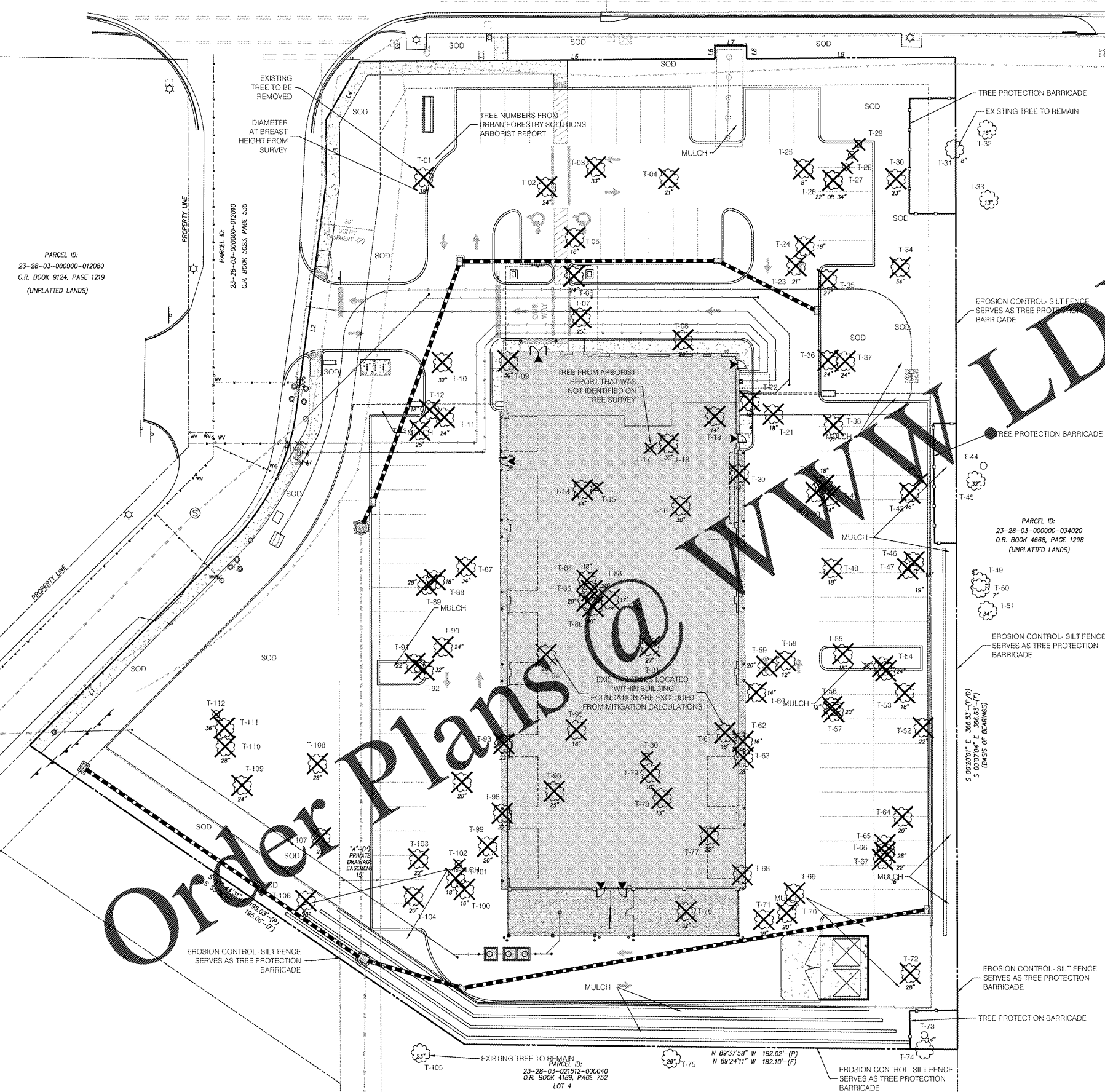




CALIBER COLLISION
SWC GRIFFIN ROAD (C.R. 582) &
HIGHLAND FAIRWAYS BLVD.
LAKELAND, FLORIDA



PARCEL ID:
23-28-03-00000-012080
O.R. BOOK 9124, PAGE 1219
(UNPLATTED LANDS)

PARCEL ID:
23-28-03-00000-012010
O.R. BOOK 5023, PAGE 535

PARCEL ID:
23-28-03-00000-034020
O.R. BOOK 4666, PAGE 1298
(UNPLATTED LANDS)

PARCEL ID:
23-28-03-021512-000040
O.R. BOOK 4189, PAGE 752
LOT 4

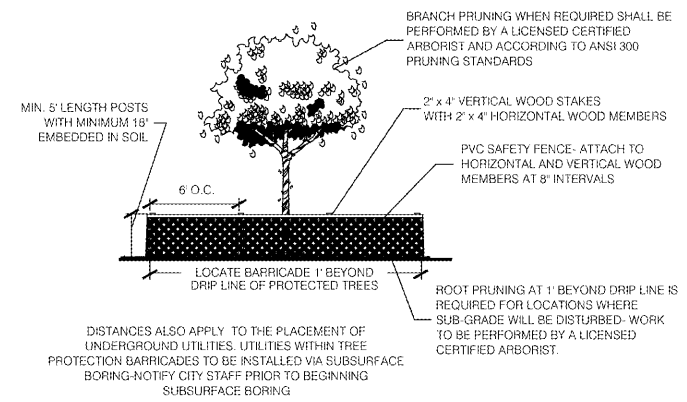
SIZE RANGE	TREE QUANTITY PRESERVED	CREDITS
5" - 7" DBH	0	0
8" - 12" DBH	3	6
13" - 19" DBH	0	0
20" - 25" DBH	0	0
26" - 29" DBH	0	0
30" - 35" DBH	0	0
36" + DBH	0	0
TOTAL CREDITS:		6

ONE TREE CREDIT EQUALS (1) LARGE "A" TREE or (3) MEDIUM "B" TREES or (6) SMALL "C" TREES

SIZE RANGE	TREE QUANTITY REMOVED	MITIGATION (D.B.H.)
6" - 23" DBH	71	142
24" DBH	1	24
26" DBH	1	26
27" DBH	2	54
28" DBH	1	28
32" DBH	2	64
TOTAL MITIGATION DBH (IN INCHES):		338

NOTES:
THE TREE PRESERVATION DATA IS BASED ON AN ARBORIST'S REPORT BY URBAN FORESTRY SOLUTIONS, LLC. THE REPORT HAS BEEN SUBMITTED AS AN ATTACHMENT. THE TREE DATA PROVIDED ON THE SURVEY IS INACCURATE AND WAS IGNORED IN THE CALCULATIONS ABOVE.
EXISTING TREES THAT LIE WITHIN THE FOUNDATION OF THE PROPOSED BUILDING ARE EXCLUDED.
WATER AND LAUREL OAKS OVER 23" DBH ARE CALCULATED AS 2" OF MITIGATION.
ALL "C" CONDITION TREES ARE CALCULATED AS 2" OF MITIGATION REGARDLESS OF CONDITION.
ALL EXEMPT AND DEAD TREES REQUIRE NO COMPENSATION.

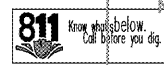
INSTALL TREE BARRICADES PRIOR TO SITE CLEARING.
REMOVAL OF TREE BARRICADES MUST BE APPROVED BY CITY STAFF



1 TREE PROTECTION DETAIL
LS1 NOT TO SCALE

REVISIONS:

1.	9/21/20	CITY REVIEW COMMENTS
2.		
3.		
4.		



NOT FOR CONSTRUCTION FOR BIDDING PURPOSES ONLY

9/28/2020

DRAWN BY: IAZ

DATE: 7/15/20

20010

TREE PRESERVATION PLAN

LS1

