

- NOTE:**
G.C. TO VERIFY WITH OWNER IF CCTV SYSTEM WILL BE REQUIRED PRIOR TO BID, PURCHASE AND INSTALLATION OF SYSTEM.
- NOTE:**
ALL LIFTS TO BE WIRED AND CONNECTED PER MANUFACTURER REQUIREMENTS. G.C. TO PROVIDE MATERIALS NECESSARY FOR INSTALLATION.
- ALL 120V, 15 AND 20A RECEPTACLES LOCATED IN SERVICE BAY SHALL BE GFCI PROTECTED & MOUNTED AT 48" AFF UNO.

ELECTRICAL KEYED NOTES

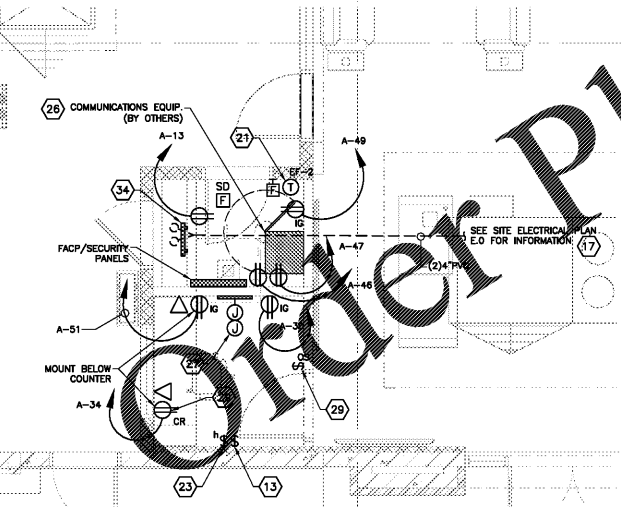
- 1 MOUNT SHOW WINDOW RECEPTACLE IN THE SOFFIT ABOVE WINDOW. CONTROL BY SWITCH IN MANAGERS OFFICE. CONTROLLED VIA EMS RELAY. SEE SHEET E-3 FOR MORE INFORMATION.
- 2 COORDINATE WITH M.C. FOR EXACT WIRING & CONTROL REQUIREMENTS.
- 3 POWER AND DATA FLOOR OUTLETS MOUNTED UNDER SALES COUNTERS. COORDINATE EXACT LOCATION WITH TENANT. TYPICAL 2" PVC TO COMMUNICATIONS ROOM UNDER SLAB. PROVIDE FOR SEPARATE BOXES FOR DATA WITH PLASTIC OR ALUMINUM COVERS.
- 4 CONNECT EXHAUST FAN WITH CIRCUIT SERVING LIGHT FIXTURES IN TOILET ROOMS. FAN TO BE CONTROLLED VIA TOILET OCCUPANCY SENSOR SUCH THAT IF EITHER TOILET ROOM IS OCCUPIED THE FAN WILL RUN. REFER TO DETAIL SHEET E-4 DETAIL #7.
- 5 COORDINATE EXACT MOUNTING HEIGHT WITH ARCHITECTURAL DRAWINGS.
- 6 SEE LIFT MOTOR WIRING DIAGRAM ON SEE SHEET E3 DETAIL #1.
- 7 MOUNT SIMPLEX RECEPTACLE FOR FAN AT +92" A.F.F. SWITCH TO BE MOUNTED AT 48" A.F.F.
- 8 REFER TO AIR COMPRESSOR WIRING DETAIL ON SHEET E-3 FOR DISCONNECT REQUIREMENTS.
- 9 PROVIDE L6-20R OUTLET FOR TIRE CHANGER.
- 10 PROVIDE L6-20R OUTLET FOR WHEEL BALANCER.
- 11 RECEPTACLE TO BE MOUNTED ABOVE COUNTER FOR MICROWAVE.
- 12 PROVIDE GFCI BREAKER FOR REFRIGERATOR.
- 13 INSTALL AND CONNECT DUCT SMOKE DETECTOR FOR RTU-1 IN RETURN AIR DUCT. PROVIDE REMOTE TEST SWITCH WITH AUDIBLE AND VISUAL INDICATORS. MOUNT HIGH ON WALL BELOW CEILING. PROVIDE PERMANENT LABEL IN OFFICE.
- 14 RTU-1: 208V/3Ø 55 MCA/60A MSCP, PROVIDE 1" C. 4#6 CU W/1#10 GND. ELECTRICAL CONTRACTOR TO MAKE CONNECTION TO NON FUSED DISCONNECT SWITCH AT UNIT. DUCT SMOKE DETECTOR IN RETURN DUCT AND CONVENIENCE NON-POWERED RECEPTACLE AT UNIT.
- 15 PROVIDE CONNECTION TO 208 VOLT, 3 PHASE WATER HEATER. PROVIDE 1" C. 3#4 CU W/1#8 GND. WATER HEATER BY MECHANICAL CONTRACTOR. ELECTRICAL CONTRACTOR TO MAKE FINAL CONNECTIONS. FIELD VERIFY LOCATION PRIOR TO INSTALLATION.
- 16 SERVICE DISCONNECT, CT CABINET AND METER. REFER TO RISER DIAGRAM SHEET E-5.
- 17 (2) 4" EMPTY CONDUITS TO TELEPHONE SERVICE POINT. COORDINATE FINAL SIZE AND LOCATION IN FIELD WITH CONSTRUCTION MANAGER PRIOR TO INSTALLATION. PHONE LINES AND DEMARCATION SHOULD TERMINATE IN COMMUNICATION CLOSET. COORDINATE WITH PHONE COMPANY TO BRING IN 25 PAIR PHONE SERVICE.
- 18 INTERLOCK EF-1 AND IH-1 MOTORIZED DAMPER SUCH THAT DAMPER OPENS WHEN EF-1 RUNS.
- 19 CONDUIT SHALL BE ROUTED 6" BELOW THE FRAME ASSEMBLY MIN.
- 20 RECEPTACLE OUTLET FOR ALIGNMENT COMPUTER TO HAVE 900mA BATTERY BACK-UP.
- 21 CONNECT TO IN-LINE EF-2 ABOVE CEILING. WIRE THERMOSTAT FOR CONTROL.
- 22 ALL ELECTRICAL RECEPTACLES, DEVICES, DISCONNECTS, ETC. SHALL BE MOUNTED AT 48" A.F.F. UNLESS NOTED OTHERWISE IN BAY SERVICE AREA.
- 23 SWITCH FOR SHOW WINDOW RECEPTACLES ABOVE WINDOW.
- 24 SATELLITE DISH CABLE ENTRANCE. VERIFY LOCATION WITH ARCHITECTURAL PLANS. DISH MOUNTED TO TOWER WALL. RUN CABLE TO TV/COFFEE CABINET. CONDUIT FOR THE SATELLITE DISH TO BE 1 1/2" GOOSENECK. COORDINATE ROUTING WITH ARCHITECT AND OWNER PRIOR TO INSTALLATION. SEE DETAIL ON SHEET E-4.
- 25 CCTV CAMERA BY SECURITY VENDOR. PROVIDE ELECTRICAL STUB UPS AND J-BOX(ES) AS REQUIRED. REFER TO DETAILS ON SHEET E4 FOR REQUIREMENTS AND MOUNTING HEIGHTS. VERIFY EXACT LOCATION WITH SECURITY VENDOR AND PROJECT MANAGER.
- 26 CCTV EQUIPMENT CABINET BY SECURITY VENDOR. REFER TO DETAIL ON SHEET E4 FOR ELECTRICAL REQUIREMENTS AND MOUNTING HEIGHTS. VERIFY EXACT LOCATION WITH SECURITY VENDOR AND PROJECT MANAGER.
- 27 PROVIDE J-BOX FOR CCTV EQUIPMENT. COORDINATE WITH FURNITURE LOCATION. J-BOX IS INTENDED TO PASS THROUGH KEYBOARD/MOUSE CABLES TO MANAGER'S DESK FROM VIDEO EQUIPMENT CABINET AND MUST BE ACCESSIBLE WHEN FURNITURE IS INSTALLED. REFER TO CCTV EQUIPMENT CABINET DETAIL ON SHEET E4.
- 28 POWER FOR HIGH STOOL BENCH ASSEMBLY TO BE ROUTED UP FURNITURE LEG AND CIRCUITED AS INDICATED. CIRCUIT TO PRE-INSTALLED HORIZONTALLY MOUNTED USB RECEPTACLES ON BENCH.
- 29 WALL MOUNTED ULTRASONIC OCCUPANCY SENSOR, USE WATT-STOPPER: #JW-100 OR EQUAL FOR CONTROL OF RECEPTACLE. RECEPTACLE WITH "CR" LABEL TO BE CONTROLLED RECEPTACLES ALL OTHER RECEPTACLES WITHOUT THE "CR" TO BE UNCONTROLLED IN THIS AREA.
- 30 UNIT IS SHIPPED WITH AN IN-GROUND CONTROL BOX. THESE UNITS MAY HAVE THE CONDUIT ROUTED THROUGH ANY OF THE SUBSTRUCTURE WALL.
- 31 INTERLOCK EF-4 AND IH-2 MOTORIZED DAMPER SUCH THAT DAMPER OPENS WHEN EF-4 RUNS.
- 32 ROUTE AIR DRYER THRU EMS RELAY. SEE EMS DETAIL ON SHEET E-3.
- 33 LEVITON EMS RELAYS AND WIREWAY MOUNT ADJACENT TO PANELS. SEE EMS NOTES ON SHEET E-3.
- 34 PROVIDE HOFFMAN DG19 GROUND BAR KIT MOUNTED ON STAND-OFFS. LOCATED AS DIRECTED BY TBC PROJECT MANAGER. SEE DRAWING E-3 FOR DETAIL.
- 35 PROVIDE FOR (2)1-1/2" PVC OR PLENUM RATED CABLE UNTIL THEY ENTER THE GARAGE. USE SHORTEST DISTANCE POSSIBLE. HDMI CANNOT EXTEND MORE THAN 50 FEET W/O BOOSTER.
- 36 WEATHERPROOF GFI SERVICE RECEPTACLE.
- 37 PROVIDE 120V POWER TO HUNTER QUICK TREAD REMOTE CONSOLE PER MANUFACTURER'S REQUIREMENTS.
- 38 FIRE ALARM DEVICES JUNCTION BOX. SEE FA DRAWINGS FOR ADDITIONAL INFORMATION. PROVIDE JUNCTION BOX WITH CONDUIT AND PULLCORD TO COMMUNICATION CLOSET.

1 POWER PLAN
1/8"=1'-0"

GENERAL NOTES

- A. ALL DEVICES SHALL BE CIRCUITED TO PANEL A UNLESS NOTED OTHERWISE.
- B. RECEPTACLES AND DISCONNECTS IN SERVICE BAY AND TIRE STORAGE SHALL BE 48" A.F.F. UNLESS NOTED OTHERWISE.
- C. THE CONTRACTOR FOR THIS WORK IS REQUIRED TO READ THE SPECIFICATIONS AND REVIEW DRAWINGS OF ALL DIVISIONS OF WORK AND IS RESPONSIBLE FOR THE COORDINATION OF THIS WORK AND THE WORK OF ALL OTHER SUBCONTRACTORS WITH ALL DIVISIONS OF WORK.
- D. ELECTRICAL CONTRACTOR IS TO FURNISH AND INSTALL TYPE WRITTEN PANEL DIRECTORIES IN ALL PANELBOARDS.
- E. NO HANGERS, SUPPORTS, JUNCTION BOXES, ETC. SHALL BE ATTACHED TO ROOF DECK.
- F. ELECTRICAL CONTRACTOR SHALL MAKE ALL FINAL CONNECTIONS AS REQUIRED FOR A FULLY COMPLETE AND OPERABLE SYSTEM.
- G. ELECTRICAL CONTRACTOR IS NOT TO SHARE THE NEUTRAL CONDUCTOR OF A CIRCUIT CONTAINING A "GFCI" DEVICE WITH ANY OTHER CIRCUIT.
- H. FIELD VERIFY EXACT LOCATION AND ELECTRICAL REQUIREMENTS OF ALL HVAC EQUIPMENT WITH MECHANICAL CONTRACTOR PRIOR TO ORDERING RELATED ELECTRICAL EQUIPMENT.
- I. ALL 15A. & 20A. 120V. DUPLEX RECEPTACLES LOCATED IN SERVICE AREA AND TIRE STORAGE SHALL BE GFCI PROTECTED.
- J. CONDUIT, RECEPTACLES, LIGHTS, ETC. AND OTHER ELECTRICAL ITEMS SHALL NOT INTERFERE WITH TIRE STORAGE RACKS. ROUTE CONDUIT IN JOIST SPACE. MC CABLE IS ALLOWED WHERE APPROVED BY LOCAL INSPECTOR.
- K. PROVIDE ROUGH-IN ONLY FOR FIRE ALARM AND SECURITY DEVICES. COORDINATE LOCATIONS AND REQUIREMENTS WITH VENDOR AND TIRE KINGDOM PROJECT MANAGER.
- L. ELECTRICAL CONTRACTOR IS TO FURNISH AND INSTALL A POLY PULL STRING IN ALL EMPTY CONDUITS FOR FUTURE USE. SECURE PULL STRING AT BOTH ENDS OF CONDUIT.

2 OFFICE & COMMUNICATIONS CLOSET POWER & DATA
1/4"=1'-0"



PROTOTYPE TEMPLATE:
NORTHLAKE
v.2020.1.08.TKD

PROJECT INFORMATION:

TIRE KINGDOM.
STORE # 945
10520 COLONIAL BLVD
FT MEYERS, LEE COUNTY, FLORIDA

95% REVIEW SET
18 AUGUST 2020

PROJECT NO.: 2020-0095
DRAWN BY: DVC
CHECKED BY:

ISSUE	DATE
PERMIT PLAN REVIEW	11-AUG-2020
REVISION	DATE

SHEET TITLE:
ELECTRICAL POWER PLAN

SHEET NUMBER:
E-1