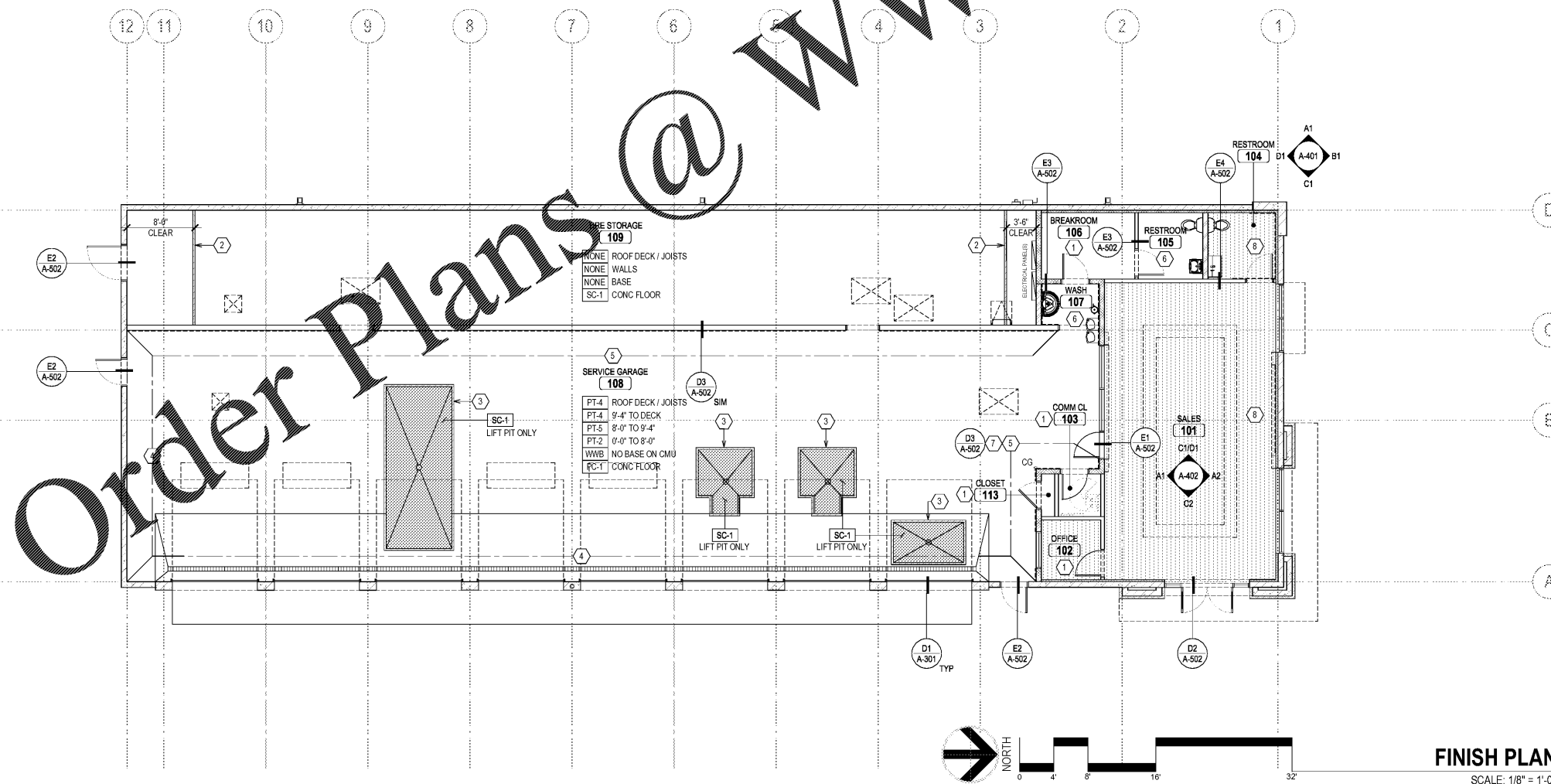


## ROOM FINISH SCHEDULE

#	DESCRIPTION	FLOOR FINISH	WALL				CEILING		
			BASE	MATL	FINISH	ACCENT	MATL	FINISH	HGT
101	SALES AREA	LVP	VWB	GWB	PT-8	WC-1	TILE	ACT-1.2	12'-0"
102	OFFICE	LVP	VWB	GWB	PT-8	-	TILE	ACT-1	8'-0"
103	COMMUNICATIONS CLOSET	SC-1	VWB	GWB	PT-8	-	TILE	ACT-1	8'-0"
104	CUSTOMER RESTROOM	LVP	MWB	GWB	T-1.2	WC-1	TILE	ACT-1	8'-0"
105	EMPLOYEE RESTROOM	SC-1	PWB	GWB	FRP	-	TILE	ACT-1	8'-0"
106	EMPLOYEE BREAK ROOM	SC-1	VWB	GWB	PT-8	-	TILE	ACT-1	9'-0"
107	EMPLOYEE WASH AREA	PC-1	PWB	GWB	FRP	-	TILE	ACT-1	9'-0"
108	SERVICE GARAGE	PC-1	WWB	CMU/GWB	PT-2.4.5	SEE ELEV	OPEN	PT-4	17' to 18'
109	TIRE STORAGE	SC-1	NONE	CMU/GWB	NONE	-	OPEN	NONE	17' to 18'
113	SERVICE GARAGE CLOSET	SC-1	VWB	GWB	PT-8	-	TILE	ACT-1	8'-0"

## MATERIAL FINISHES SCHEDULE

KEY	DESCRIPTION	MATERIAL	MANUFACTURER	SPECIFICATION / COLOR	NOTES
ACT-1	CEILING TILE	ACOUSTICAL TILE	USG	FROST CLMAPLUS SQ TEGULAR RA... WHITE	2X2' 5/16" GRID TO MATCH CLG
ACT-2	CEILING TILE	ACOUSTICAL TILE	USG	FROST CLMAPLUS SQ TEGULAR RA... #414 BLACK	2X2' 5/16" GRID TO MATCH CLG
PL-1	DOOR	LAMINATE	MASONITE	CENDURA SERIES WHITE BIRCH... EAR	
PC-1	FLOORING	POLISHED CONCRETE	DIAMATIC	ULTRA FLOOR DIAMATIC POLISH SYSTEM	PROVIDED BY TENANT
LVP	FLOORING	VINYL	MATS INC	STASIDE WESTERN CERAM	6X48"
SC-1	FLOORING	SEALED CONCRETE	-	-	-
PT-1	PAINT	LATEX	SHERWIN WILLIAMS	SW 7076 'CYBER SPACE'	
PT-2	PAINT	LATEX	SHERWIN WILLIAMS	SW 686 'GRAY MATTERS'	
PT-3	PAINT	LATEX	SHERWIN WILLIAMS	SW 6285 'TRICORN BLACK'	SEMI-GLOSS
PT-4	PAINT	LATEX/DRYFALL	SHERWIN WILLIAMS	SW 7005 'PURE WHITE'	DRY-FALL AT JOIST/DECK
PT-6	PAINT	LATEX	SHERWIN WILLIAMS	SW 4084 'SAFETY YELLOW'	PROTECTIVE COATING
PT-7	PAINT	LATEX	SHERWIN WILLIAMS	PRIMER ONLY	AT WALL COVERING
PT-8	PAINT	LATEX	SHERWIN WILLIAMS	SW 7064 'PASSIVE'	SATIN
PT-5	PAINT AND COLOR	LATEX	SHERWIN WILLIAMS	SW 6865 'GYPSY RED'	SEMI-GLOSS
W	WALL BASE	VINYL	FLEXCO	VCB-01 'BLACK DAHLIA'	4" COVE
MWB	WALL BASE	METAL	SCHLUTER	DLEX-AHKA 'SATIN ALUMINUM'	
WWB	WALL BASE	WOOD	SHERWIN WILLIAMS	SW 7066 'GRAY MATTERS'	2X4"
WB	WALL BASE	PVC	MARLITE	#M612 BASE MOLDING P200 'BLACK'	4"
W	WALL COVERING	VINYL	MDC WALLCOVERING	LENTEX CONTRACT CHI TYPE II 'WHITE HERON'	
FP	WALL PANEL	FIBERGLASS	MARLITE	STANDARD WHITE	
T-1	WALL TILE	PORCELAIN	DALTILE	TIMBER GLEN #P824 'ESPRESSO'	12X24"
T-2	WALL TILE	CERAMIC	DALTILE	COLOR WHEEL LINEAR #X114 'DESERT GRAY'	4X12"
MTB	WALL TILE ACCENT	METAL	SCHLUTER	DESIGN LINE 'SATIN ALUMINUM'	1"



## FINISH NOTES

- PAINING**
- ALL SURFACES SHALL BE PRIMED PER MANUFACTURERS RECOMMENDATIONS WHICH IS SUITABLE AND COMPATIBLE WITH SURFACE APPLICATION AND FINISH AS SPECIFIED.
  - ALL MATERIAL AND WORKMANSHIP SHALL PRODUCE FIRST CLASS INSTALLATION OF UNIFORM QUALITY WITHOUT LAPS OR STREAKS.
  - PAINTING CONTRACTOR SHALL TOUCH-UP ALL NAIL HOLES IN WOOD TRIM AND BASE.
  - ALL PAINTED SURFACES SHALL RECEIVE THREE COATES: (1) COAT OF PRIMER AND (2) FINISH COATS. PAINTED SURFACE TO BE SMOOTH ROLLED WITH NO SKIPS, LAPS, OR STREAKS.
  - PAINTED MASONRY (BRICK, CMU, ETC) SHALL BE PAINTED WITH SEMI-GLOSS. DO NOT SUBSTITUTE A FLAT OR OTHER FINISH.
- FLOORING**
- GC SHALL PROVIDE AND INSTALL ALL FLOORING ACCESSORIES, INCLUDING TRANSITIONS, WALL BASE, AND CONCRETE CURE AND SEAL.
- WALL COVERING**
- GC SHALL INSTALL WALL PAPER PER MANUFACTURER RECOMMENDATIONS. AREAS RECEIVING WALL COVERING SHALL BE PREPARED TO A LEVEL 5 DRYWALL FINISH.
- CORNER GUARDS**
- GC SHALL PROVIDE AND INSTALL CORNER GUARDS AT OUTSIDE CORNERS.
    - A. CUSTOMER FACING AREAS  
PROVIDE 2" X 2" X 4" H RIGID PVC CORNER GUARD W/ HIDDEN ALUMINUM RETAINER IN COLOR BLACK
    - B. SERVICE AND STORAGE AREAS  
PROVIDE 2" X 2" X 8" H SOLID DIAMOND PLATE CORNER GUARD IN CHROME FINISH

## KEYED NOTES

- SEE ROOM FINISH SCHEDULE FOR FINISHES.
- PAINT 3" YELLOW FLOOR STRIPE IN FRONT OF ELECTRICAL PANELS & FIRE DEPARTMENT ACCESS.
- PAINT 3" YELLOW FLOOR SAFETY ZONE WARNING STRIPE AROUND LIFT PITS.
- PAINT CMU. SEE INTERIOR ELEVATIONS FOR PAINT STRIPE REQUIREMENTS.
- 3/4" FIRE RATED FLYWD (B/C GRADE) TO 8'-0" AFF. INSTALL SMOOTH SIDE OUT. ALL JOINTS AND HOLES TO BE FILLED WITH PAINT-GRADE LATEX-BASED CAULK.
- FRP ON GYP BD TO 8'-0" AFF. PAINT GYP BD ABOVE FRP.
- CAULK BIO PARTITION AT CONDITIONED SPACES. SEE DETAIL.
- WALL COVERING - FURNISHED BY OWNER AND INSTALLED BY GC.

PROTOTYPE TEMPLATE:  
**NORTHLAKE**  
v.2020.1.08.TKD

PROJECT INFORMATION:

**TIRE KINGDOM.**  
STORE # 945  
10520 COLONIAL BLVD  
FT MEYERS, LEE COUNTY, FLORIDA

95% REVIEW SET  
18 AUGUST 2020

PROJECT NO.: 2020-095  
DRAWN BY: BMT  
CHECKED BY: EKB

ISSUE DATE  
PERMIT PLAN REVIEW 11-AUG-2020

REVISION DATE

SHEET TITLE:  
**FINISH PLAN AND SCHEDULES**

SHEET NUMBER:  
**A-603**

**FINISH PLAN**  
SCALE: 1/8" = 1'-0"