

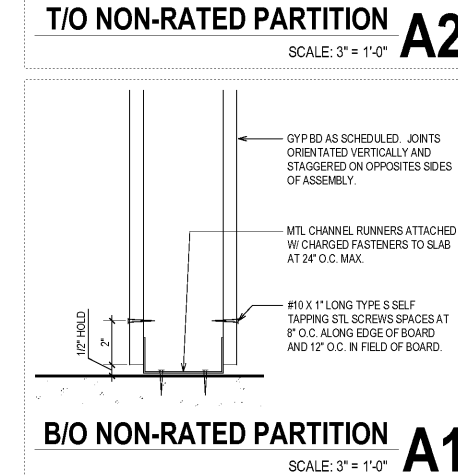
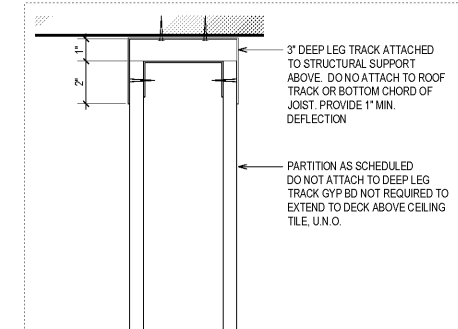
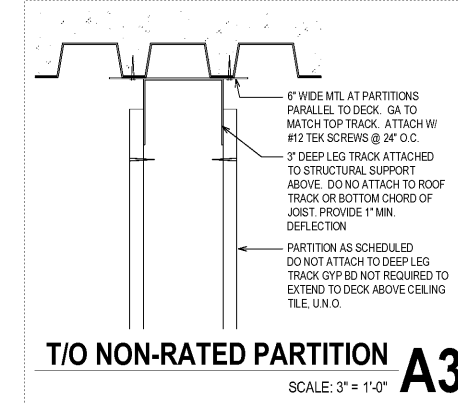
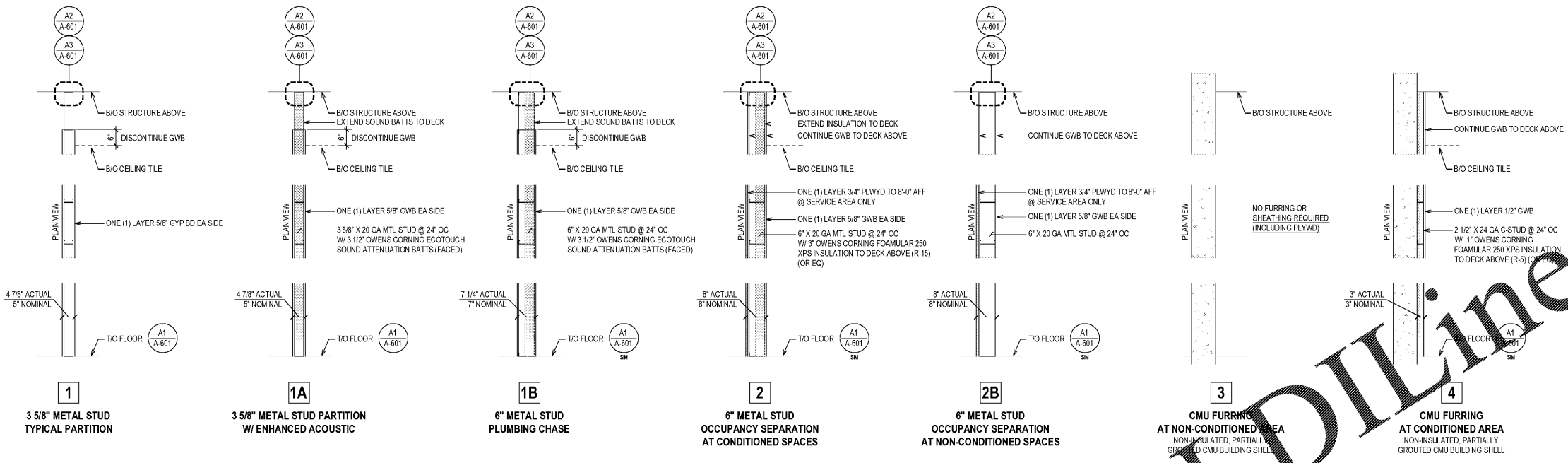
**PARTITION SCHEDULE**

**PLENUM CEILING**

ALL INSULATION MUST BE FLAME SPREAD < 25 AND SMOKE DEVELOPMENT SPREAD < 50 OR SHALL BE COVERED W/ 1/2" GWB. SUBSTITUTIONS TO PRODUCTS LISTED SHALL BE APPROVED IN WRITING BY THE ARCHITECT-OF-RECORD PRIOR TO PURCHASE AND INSTALLATION, INCLUDING SOUND ATTENUATION.

**PARTITION NOTES**

- ALL PARTITION METAL STUDS AND GYP BD EXTEND TO THE UNDERSIDE OF THE STRUCTURE ABOVE UNLESS OTHERWISE MODIFIED.
- PROVIDE VERTICAL AND HORIZONTAL CONTROL JOINTS IN GYP BD SURFACES AT 30'-0" O.C. MAX.
- IF GYP BD IS ONE SIDE ONLY, PROVIDE HORIZONTAL BRIDGING AT 5'-0" O.C. VERTICALLY.
- ALL GYP BD IS 5/8" TYPE 'X' U.N.O.
- PROVIDE WATER RESISTANT GYP BD AT ALL TOILET ROOM PARTITIONS U.N.O.
- ALL LUMBER USED FOR FRAMING AND BLOCKING SHALL BE FIRE-RETARDANT TREATED.
- SPACE STUDS AT 24" O.C. UNLESS OTHERWISE NOTED FOR SPAN.
- PROVIDE 20 GA FRAMING AT DOOR JAMBS. STUDS AT JAMBS TO CONTINUE TO UNDERSIDE OF DECK ABOVE.
- 3" DEEP LEG TRACK AT ALL TOP TRACK LOCATIONS.
- PARTITIONS WITH CERAMIC TILE FINISH TO USE 1/2" MIN FRAMING MEMBERS.
- RATED PARTITIONS AT COLUMNS MUST RETAIN ADJOINING FIRE RATED ENVELOPE.
- ATTACH STUD TO BOTTOM TRACK W/ #10 SCREWS THROUGH EACH FLANGE. ATTACH BOTTOM TRACK TO SLAB WITH POWDER ACTUATED FASTENERS ACCORDING TO THE FOLLOWING GUIDELINES:
  - NON POST-TENSIONED SLABS:  
ATTACH TRACK TO SLAB W/ 1 POWDER ACTUATED FASTENER (MIN SHANK DIAMETER = 0.138", MIN EMBEDMENT = 1") AT EACH STUD LOCATION. SPACE FASTENERS AT 12" O.C. FOR STUDS THAT ARE SPACED 24" OC WITH WALL HEIGHTS GREATER THAN 34 FEET.
  - NON POST-TENSIONED SLABS:  
ATTACH TRACK TO SLAB W/ 1 POWDER ACTUATED FASTENER (MIN SHANK DIAMETER = 0.138", MIN EMBEDMENT = 3/4") AT EACH STUD LOCATION. SPACE FASTENERS AT 12" O.C. FOR STUDS THAT ARE SPACED 18" OC WITH WALL HEIGHTS GREATER THAN 30 FEET. FOR STUDS THAT ARE SPACED 24" OC WITH WALL HEIGHTS GREATER THAN 34 FEET.
- ATTACH TOP TRACK TO ROOF DECK WITH A MINIMUM OF ONE #10 SCREW SPACED AT 12" O.C.
- SUBCONTRACTOR IS RESPONSIBLE FOR FIRE STOPPING AND SEALING THEIR PENETRATIONS THROUGH RATED FLOORS AND PARTITIONS. CONTRACTOR SHALL PROVIDE DETAILS OF RATED FIRE STOPS FOR REVIEW AND APPROVAL.
- IN PLENUM CEILING ALL INSULATION MUST BE FLAME SPREAD < 25 AND SMOKE DEVELOPMENT SPREAD < 50 OR SHALL BE COVERED W/ 1/2" GWB.



Order Plans @ www.LDILine.com

PROTOTYPE TEMPLATE:  
**NORTHLAKE**  
v.2020.1.08.TKD  
PROJECT INFORMATION:

**TIRE KINGDOM.**  
STORE # 945  
10520 COLONIAL BLVD  
FT MEYERS, LEE COUNTY, FLORIDA

95% REVIEW SET  
18 AUGUST 2020

PROJECT NO.: 2020-095  
DRAWN BY: BMT  
CHECKED BY: EKB

ISSUE DATE  
PERMIT PLAN REVIEW 11-AUG-2020

REVISION DATE

SHEET TITLE:  
**PARTITION SCHEDULES**

SHEET NUMBER:  
**A-601**