

CEILING NOTES

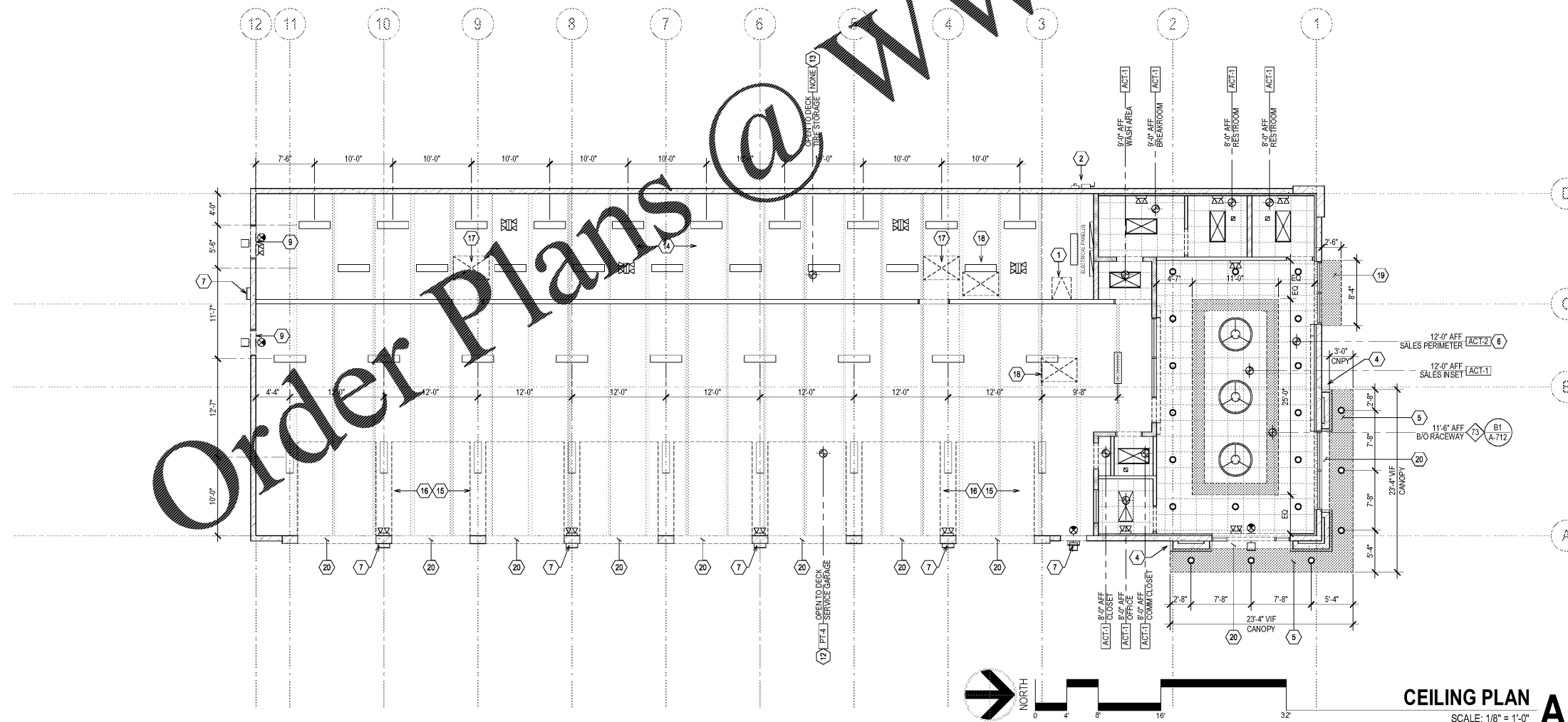
- REFER TO ELECTRICAL DRAWINGS FOR GENERAL AND EMERGENCY LIGHTING, EXACT NUMBER OF FIXTURES, AND FIXTURES TYPE. REFER TO MECHANICAL DRAWINGS FOR ADDITIONAL HVAC EQUIPMENT AND LOCATIONS.
- ALL SPRINKLER LINES THROUGHOUT ENTIRE STORE SHALL BE AS HIGH AS POSSIBLE, AND COMPLYING WITH LIFE SAFETY CODES - COORDINATE ROUTING WITH HVAC.
- G.C. TO COORDINATE ALL LOCATIONS OF HVAC DIFFUSERS, GRILLES, ETC. SO AS TO AVOID LIGHTING FIXTURE LOCATIONS.
- SEE ELECTRICAL DRAWINGS FOR EXTERIOR LIGHTING.
- WHERE HVAC DIFFUSERS ARE LOCATED IN SALES AND WAITING AREAS, ORDER BLACK DIFFUSERS TO MATCH ACT-2 BLACK CEILING TILES AND GRID.
- SUBCONTRACTOR TO SECURE CEILING GRID EDGE MOLDING W/ SCREW ANCHORS AT 16" O.C. UNO.

LEGEND

SYMBOL	DESCRIPTION
	2X2 OR 2X4 RECESSED TROFFER LAY-IN LIGHT FIXTURE SEE ELECTRICAL FOR NIGHT LIGHT LOCATIONS
	1X4 LED HIGH BAY LIGHT FIXTURE SEE ELECTRICAL FOR NIGHT LIGHT LOCATIONS
	PENDANT LIGHT - MOUNT B/O LIGHT FIXTURE @ 9'-0" AFF
	EXTERIOR WALL PAK
	EXIT SIGN
	SUSPENDED ACOUSTICAL CEILING TILE SYSTEM
	HVAC SUPPLY DIFFUSER
	HVAC RETURN DIFFUSER
	RECESSED LIGHTING UNDER CANOPY
	EXHAUST FAN
	2X2 OR 2X4 LED LIGHT FIXTURE SEE ELECTRICAL FOR NIGHT LIGHT LOCATIONS
	EMERGENCY LIGHT W/ BATTERY POWER BACK-UP
	EXTERIOR REMOTE HEADS - LINKED TO INTERIOR EXIT SIGN (EMERGENCY EXIT ILLUMINATION ON BATTERY POWER)

KEYED NOTES

- STL LADDER TO ROOF ACCESS ABOVE. SEE WALL SECT FOR ACCESS HATCH DETAIL.
- APPROX ELECTRIC METER LOCATION, SEE ELEC.
- NOT USED.
- LEDGE STONE LINTEL @ B/O CANOPY ON ENTRANCE TOWER RETURN. SEE DETAIL.
- PREFINISHED CANOPY CEILING.
- PROVIDE 'BLACK' HVAC DIFFUSERS IN SALES AND WAITING AREAS PERIMETER AREA CEILING TILE. ACTUAL COLOR SHALL MATCH CEILING GRID AND TILES.
- EXTERIOR WALL PAK LIGHTING. SEE EXTERIOR ELEVATIONS FOR MOUNTING HEIGHTS.
- NOT USED.
- EXHAUST FAN IN WALL, SEE MECH.
- NOT USED.
- NOT USED.
- OPEN TO DECK ABOVE, PAINTED.
- OPEN TO DECK ABOVE, UNFINISHED.
- LIGHT FIXTURES, ELECTRICAL CONDUITS, SPRINKLER HEADS AND OTHER INFRASTRUCTURE SHALL BE LOCATED IN AISLE AND NOT ABOVE TIRE STORAGE AND PARTS RACKING. MOUNT B.O. LIGHTING NO LOWER THAN 15'-0" AFF. ENSURE LIGHT LOCATION DOES NOT INTERFERE WITH OPERATION OF ALIGNMENT LIFT BELOW.
- MOUNT LIGHTING BELOW OH DOOR IN OPEN POSITION APPROXIMATE 12'-6" ABOVE SLAB.
- PROVIDE SKYLIGHT HEAT AND SMOKE VENT W/ FIRE AND SMOKE DETECTORS IN HIGH-PILED STORAGE AREA. SEE MECH.
- AIR INTAKE VENT, SEE MECH.
- FABRIC AWNING
- PAINT CMU LINTEL TO MATCH FACE OF FACADE



CEILING PLAN A1
SCALE: 1/8" = 1'-0"

PROTOTYPE TEMPLATE:
NORTHLAKE
v.2020.1.08.TKD

PROJECT INFORMATION:

TIRE KINGDOM.
STORE # 945
10520 COLONIAL BLVD
FT MEYERS, LEE COUNTY, FLORIDA

95% REVIEW SET
18 AUGUST 2020

PROJECT NO.: 2020-095
DRAWN BY: BMT
CHECKED BY: EKB

ISSUE DATE
PERMIT PLAN REVIEW 11-AUG-2020

REVISION DATE

SHEET TITLE:
CEILING PLAN

SHEET NUMBER:
A-102