

FLOOR PLAN NOTES

- TO SLAB ELEVATIONS
1A. LEVEL 01 = 100'-0" (SEE CIVIL FOR ACTUAL DATUM)
1B. BIO ROOF DECK = 117'-0 1/4" TO 118'-0" (SEE STRUCTURAL)
- SEE SHEET A-601 FOR PARTITION TYPES SCHEDULE.
- SEE SHEET A-602 FOR DOOR, FRAMES, AND HARDWARE SCHEDULE.
- SEE SHEET A-603 FOR GLAZING FRAMES SCHEDULE.
- SEE SHEET A-701 FOR FIXTURES, FURNITURE, AND EQUIPMENT PLAN & SCHEDULE.
- ALL PARTITION METAL STUD AND GYP BD SHALL EXTEND TO THE UNDERSIDE OF THE STRUCTURE ABOVE UNLESS OTHERWISE NOTED.
- ALL LUMBER USED FOR FRAMING AND BLOCKING SHALL BE FIRE-RETARDANT TREATED.
- SUBCONTRACTOR IS RESPONSIBLE FOR STOPPING AND SEALING THEIR PENETRATIONS THROUGH FLOOR AND PARTITIONS. CONTRACTOR SHALL PROVIDE DETAIL OF RATES FOR STOPPING AND APPROVAL.
- ALL MATERIALS AND PRODUCTS SUPPLIED SHALL BE NEW AND INSTALLED IN ACCORDANCE WITH MANUFACTURER'S SPECIFICATIONS. ANY DEVIATION FROM THE INTENT OF THE DOCUMENTS WITHOUT WRITTEN APPROVAL IS AT THE GC / TRADESMAN RISK AND MAY RESULT IN CORRECTIVE ACTION WITHOUT COST TO THE DESIGNER, TENANT, AND/OR OWNER.
- DIMENSIONS ARE TAKEN FROM FACE OF SHEATHING AND/OR FACE OF MASONRY.

LEGEND

REFERENCE INDICATORS

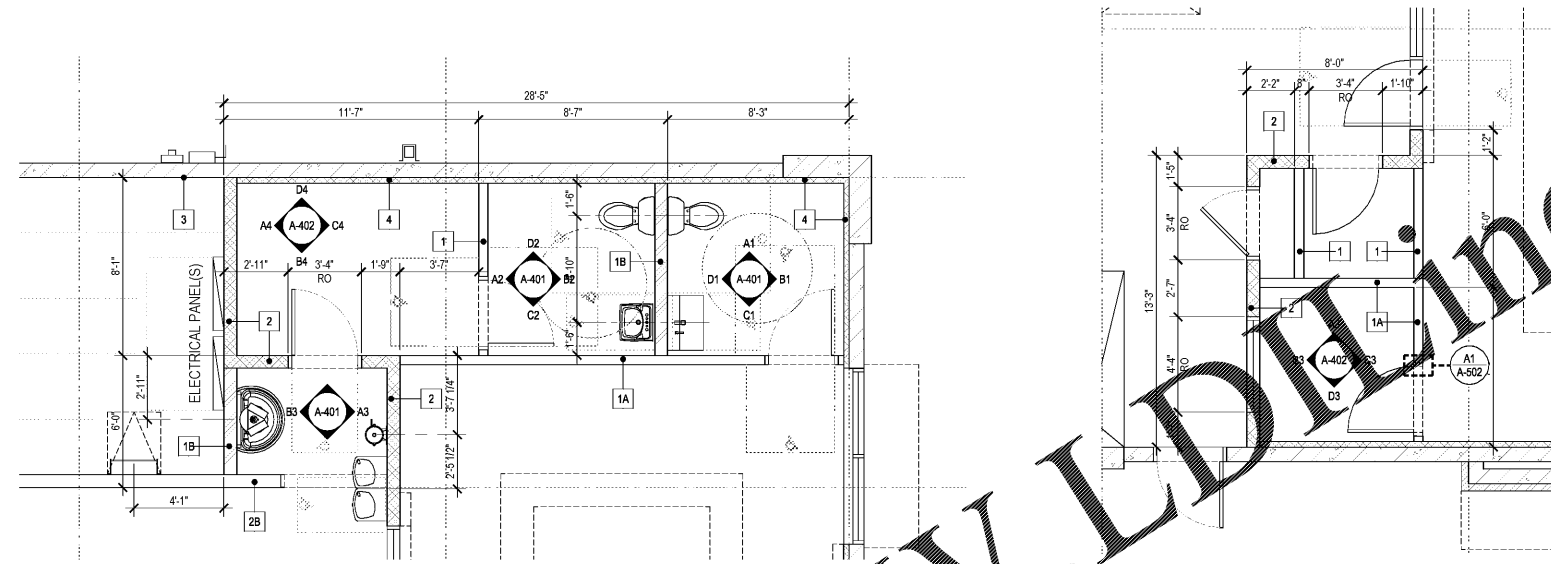
- # PARTITION TYPE
- # KEYED NOTE
- ROOM # ROOM NAME / NUMBER
- # GLAZING FRAME
- 000 DOOR NUMBER

WALL & PARTITION INDICATORS

- NEW PARTITION
- EXISTING TO REMAIN
- 1-HR FIRE-RESISTIVE RATING
- 2-HR FIRE-RESISTIVE RATING

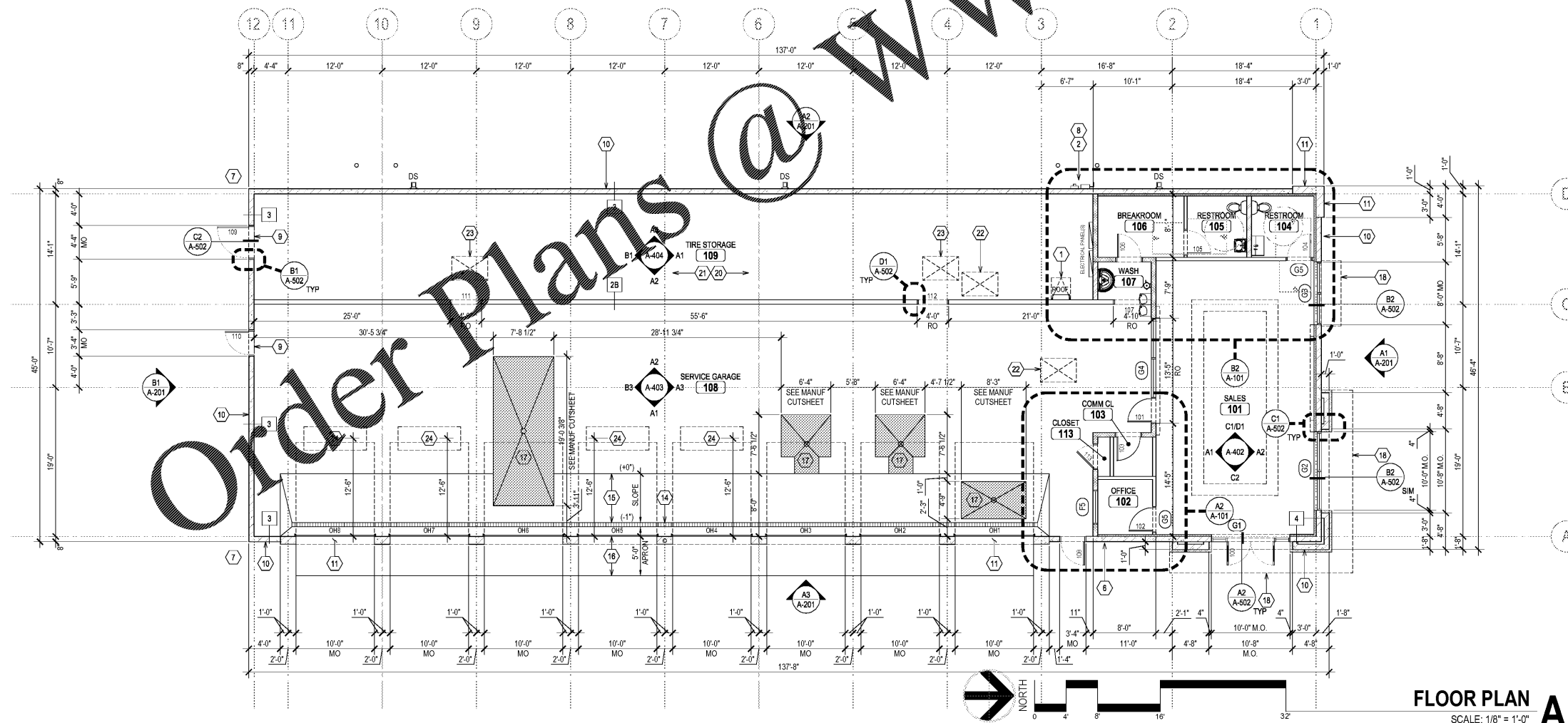
KEYED NOTES

- FIXED STL LADDER TO ROOF ACCESS ABOVE
- APPROX ELECTRIC METER LOCATION, SEE ELEC
- NOT USED
- NOT USED
- NOT USED
- PREFERRED FIRE DEPARTMENT KNOX BOX LOCATION. COORDINATE FINAL LOCATION WITH AHJ
- PROVIDE (2) STL PIPE BOLLARD PROTECTION WHERE BUILDING CORNER IS ADJACENT TO AND FLUSH WITH DRIVE AISLE
- PROVIDE (2) STL PIPE BOLLARD(S) PROTECTION AT ALL UTILITY METERS
- EXHAUST FAN IN WALL, SEE MECH
- 8" CMU TYP UNO, SEE STRUCT
- 12" CMU REQUIRED AT OH DOORS AND CORNER PLASTER, SEE STRUCT
- IN CLIMATE ZONES WHERE GRADE ROUTINELY FREEZES, PROVIDE STRUCTURAL CONC STOOP AT ALL DOORS, SEE STRUCT.
- NOT USED
- TRENCH DRAIN AND CATCH BASIN, SEE PLUMBING.
- PROVIDE SLOPED SLAB TO PROVIDE POSITIVE DRAINAGE TOWARD TRENCH DRAIN (1/8" PER FT MIN)
- PROVIDE HEAVY DUTY CONC APRON @ OH DOORS. SLOPE AWAY FROM BUILDING TO ENSURE POSITIVE DRAINAGE
- LIFT EQUIPMENT PIT W/ FLOOR DRAIN, SEE STRUCTURAL AND PLUMBING
- DASHED LINE INDICATES CANOPY OR AWNING ABOVE. PROTECT FROM DRIVE AISLE TRAFFIC DURING CONSTRUCTION.
- NOT USED
- PER NFPA 1, PROVIDE LIGHT-FRAME TRUSS-TYPE ROOF SYSTEM WARNING PLACARD. COORDINATE PLACEMENT WITH FIRE MARSHAL.
- PROVIDE MANUAL SMOKE DETECTOR IN TIRE STORAGE AREA.
- AIR INTAKE HOOD ABOVE, SEE MECH. SEE ALSO STRUCT
- SKYLIGHT W/ HEAT AND SMOKE VENT ABOVE, SEE MECH
- IN-GROUND LIFT-CASSETTE, SEE STRUCT. ENSURE NO PLUMBING IS ROUTED THROUGH THIS LOCATION.



ENLARGED FLOOR PLAN B2
SCALE: 1/4" = 1'-0"

ENLARGED FLOOR PLAN A2
SCALE: 1/4" = 1'-0"



FLOOR PLAN A1
SCALE: 1/8" = 1'-0"

PROTOTYPE TEMPLATE:

NORTHLAKE
v.2020.1.08.TKD

PROJECT INFORMATION:

TIRE KINGDOM.
STORE # 945
10520 COLONIAL BLVD
FT MEYERS, LEE COUNTY, FLORIDA

DATE:

95% REVIEW SET
18 AUGUST 2020

PROJECT NO.: 2020-0955
DRAWN BY: BMT
CHECKED BY: EKB

ISSUE DATE
PERMIT PLAN REVIEW 11-AUG-2020

REVISION DATE

SHEET TITLE:

FLOOR PLAN

SHEET NUMBER:

A-101

Order Plans @

WWW.LDLINE.COM