

Customer Name: Georgia Mountain Health
 Reference: Super Friendly Dental Preference using
 Quote #: existing EQ
 WQBEV000955-2



Technical Document

Affected Line Items

Line	Item	Label
5	5730	Left Hinge
6	5730	Right Hinge
14	5730	Left Hinge

Figure 11: 5730 and 5731 Hinging Cleat Attaching to Wall

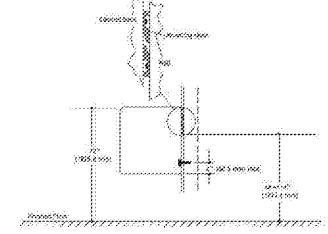
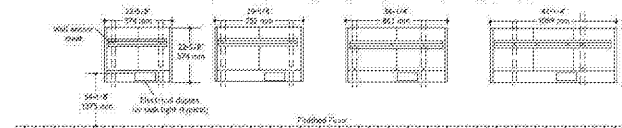


Figure 12: 5730 and 5731 Hinging Specifications



This written material is not intended to be, and should not be, used as a substitute for the compliance with local, state, federal code and Americans with Disabilities Act. It is the responsibility of the user to integrate the A-dec equipment specifications presented herein with the regulations and codes enforced by local planning and inspection authorities. A-dec, inc. shall not be held liable for any errors contained herein or any consequential or other damages concerning the furnishings, performance or use of this material. The information in this document is subject to change without notice. If you find any problems with this document, please report them to us in writing.

Customer Name: Georgia Mountain Health
 Reference: Super Friendly Dental Preference using
 Quote #: existing EQ
 WQBEV000955-2



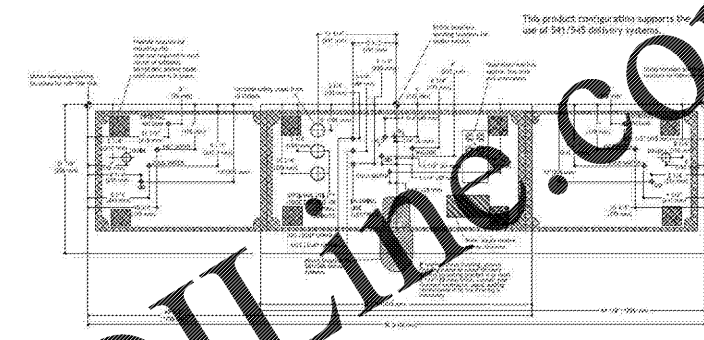
Technical Document

Affected Line Items

Line	Item	Label
1	5580	Treatment
12	5580	Hyg

5580 Treatment Console 42", 69", and 96"

Figure 25: Templates and Utilities - 5580 Treatment Console 42", 69", and 96"



This written material is not intended to be, and should not be, used as a substitute for the compliance with local, state, federal code and Americans with Disabilities Act. It is the responsibility of the user to integrate the A-dec equipment specifications presented herein with the regulations and codes enforced by local planning and inspection authorities. A-dec, inc. shall not be held liable for any errors contained herein or any consequential or other damages concerning the furnishings, performance or use of this material. The information in this document is subject to change without notice. If you find any problems with this document, please report them to us in writing.

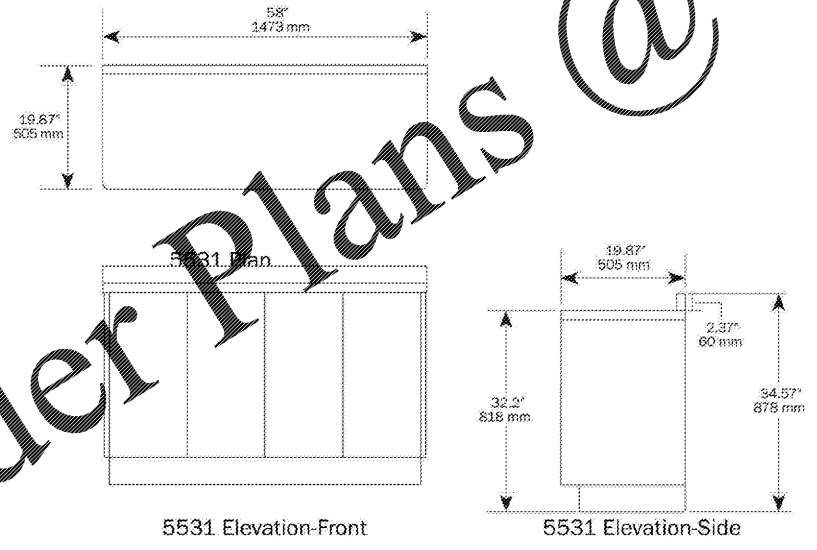
Customer Name: Georgia Mountain Health
 Reference: Super Friendly Dental Preference using
 Quote #: existing EQ
 WQBEV000955-2



Technical Document

Affected Line Items

Line	Item	Label
3	5631	Treatment Right Sink
4	5631	Treatment Left Sink
13	5631	Hyg



This written material is not intended to be, and should not be, used as a substitute for the compliance with local, state, federal code and Americans with Disabilities Act. It is the responsibility of the user to integrate the A-dec equipment specifications presented herein with the regulations and codes enforced by local planning and inspection authorities. A-dec, inc. shall not be held liable for any errors contained herein or any consequential or other damages concerning the furnishings, performance or use of this material. The information in this document is subject to change without notice. If you find any problems with this document, please report them to us in writing.

Customer Name: Georgia Mountain Health
 Reference: Super Friendly Dental Preference using
 Quote #: existing EQ
 WQBEV000955-2



Technical Document

Affected Line Items

Line	Item	Label
1	5680	Treatment
3	5631	Treatment Right Sink
4	5631	Treatment Left Sink
12	5680	Hyg
13	5631	Hyg

UTILITY SPECIFICATIONS

Utility	Finish	Requirement
Air	Protrude 1" (25.4 mm) for 3/8" compression	80-125 psig (550 to 860 kPa), 2.5 scfm (71 sl/min) minimum, during normal use (7.3 scfm (207 sl/min) peak instantaneous flow). Flush lines prior to making connections to dental equipment.
Water	Protrude 1" (25.4 mm) for 3/8" compression	60 ± 20 psig (413 ± 140 kPa), 1.5 gpm (5.7 l/min) minimum, not to exceed 40°C (104°F). Flush lines prior to making connections to dental equipment.
Central vacuum	Protrude 1" (25.4 mm) for 5/8" (16 mm) O.D. tubing and other specified by the central vacuum supplier	Wet Systems: 10 ± 2 inches of Hg (13 ± 7 kPa) and 9 scfm (250 sl/min) minimum. Dry/Vac-dry Systems: 4.5 ± 1 inches of Hg (6 ± 3 kPa) and 1.2 scfm (340 sl/min) minimum.
Electrical	Protrude 1" (25.4 mm)	Refer to the electrical requirements listed throughout this section.
Gravity drain	Protrude 1" (25.4 mm)	Booster stopper connects to 1-1/4" or 1-1/2" flanged spigots.
Hydroxide	Specified by the product manufacturer	Specified by the product manufacturer.
Oxygen	Specified by the product manufacturer	Specified by the product manufacturer.

This written material is not intended to be, and should not be, used as a substitute for the compliance with local, state, federal code and Americans with Disabilities Act. It is the responsibility of the user to integrate the A-dec equipment specifications presented herein with the regulations and codes enforced by local planning and inspection authorities. A-dec, inc. shall not be held liable for any errors contained herein or any consequential or other damages concerning the furnishings, performance or use of this material. The information in this document is subject to change without notice. If you find any problems with this document, please report them to us in writing.



PROJECT: GEORGIA MOUNTAINS HEALTH
 LOCATION: ELLIJAY, GA.

HENRY SCHEIN REP: JOE WILSON
 CENTER: ATLANTA, GA.
 PHONE #: (404)-226-8821

IMPORTANT NOTE:
 THIS DOCUMENT HAS BEEN PREPARED AS AN INSTRUMENT OF PROFESSIONAL SERVICE AND IS NOT AN ARCHITECTURAL PLAN. THE IDEAS/DESIGN INCLUDED HEREIN ARE THE SOLE PROPERTY OF HENRY SCHEIN DENTAL AND ARE PROTECTED UNDER COPYRIGHT. THESE PLANS MAY NOT BE USED OR REPRODUCED WITHOUT EXPRESSED WRITTEN CONSENT OF HENRY SCHEIN AND FULL PAYMENT OF ANY ASSOCIATED DESIGN FEES.
ALL DIMENSIONS ARE SUBJECT TO JOB-SITE VERIFICATION.

PROJECT NUMBER: 20-0565
 PROJECT START DATE: 4/3/2020
 FINALS START DATE: 7/9/2020
 DRAWN BY: ARCH
 FINALS BY: TJK
 CHECKED BY: LBS
 REVISIONS:

INT.SQ.FT.= PER ARCH
 SCALE: N/A SHT. SIZE: 24 x 36
 DENTAL CABINET DRAWINGS

DDC.3