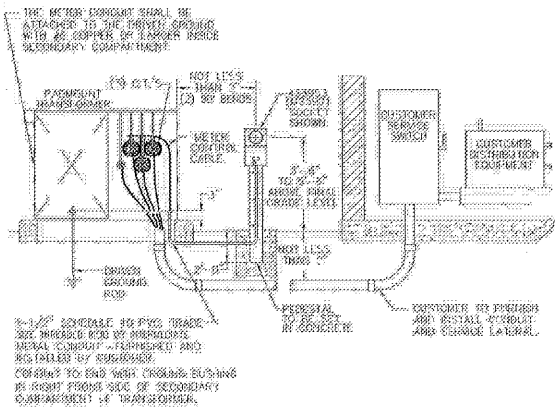


NOTES:

1. THIS METHOD OF SERVICE MUST BE APPROVED BY A QUALIFIED EMPLOYEE.
2. COMPANY SHALL MAKE ALL CONNECTIONS AT PADMOUNT AND METER SOCKET.
3. INSTRUMENT TRANSFORMERS TO BE INSTALLED IN SECONDARY COMPARTMENT OF THE PADMOUNT TRANSFORMER BY A QUALIFIED EMPLOYEE.
4. METER SOCKET/CABINET SHALL NOT BE MOUNTED TO THE PADMOUNT TRANSFORMER.
5. METER SOCKET/CABINET AND PEDESTAL FURNISHED BY COMPANY AND INSTALLED BY SUBCONTRACTOR.
6. C.T.'S ON SECONDARY PHASES, METER CONTROL CABLE FURNISHED AND INSTALLED BY COMPANY.



4-WIRE, 3-PHASE, PADMOUNT TRANSFORMER (ABOVE 600A)

CONTACT LIST	
1.	POWER COMPANY POINT OF CONTACT IS: JOHN FOUST GEORGIA POWER 878-372-8797 jfoust@southmco.com
2.	COMMUNICATIONS COMPANY POINT OF CONTACT IS: JIM TAYLOR ETC 706-897-5568 jim@alltel.com

- GENERAL SITE NOTES**
1. ALL CONDUCTOR SIZES SHOWN ARE BASED ON THE NEC AMPACITIES OF COPPER CONDUCTORS, TYPE THW UNLESS OTHERWISE NOTED.
 2. ALL UNDERGROUND WIRING IS TO BE INSTALLED IN SCHEDULE 40 PVC CONDUIT PER THE WRITTEN SPECIFICATIONS. RIGID STEEL ELBOWS ARE TO BE USED ON THE CONDUIT WHEREVER IT TURNS UP AND EXITS THE GROUND.
 3. THE CONTRACTOR SHALL SUPPLY A SEPARATE GREEN INSULATED GROUND WIRE IN ALL RUNS OF PVC CONDUIT, WHETHER SHOWN ON THE DRAWINGS OR NOT.
 4. THE ELECTRICAL CONTRACTOR IS RESPONSIBLE FOR SUPPLYING ALL CONCRETE AND RELATED WORK FOR ALL POLE BASES, TRANSFORMER PADS, ETC., WHICH ARE IN HIS SCOPE OF WORK.
 5. THE ELECTRICAL CONTRACTOR IS RESPONSIBLE FOR PROVISION OF ELECTRICAL WIRING AND ASSOCIATED EQUIPMENT REQUIRED TO PROVIDE SERVICE TO ALL PLOTS.
 6. ALL WORK IS TO COMPLY WITH THE LATEST VERSION OF THE NEC AND ALL APPLICABLE STATE, LOCAL, AND MUNICIPAL CODES.
 7. THE ELECTRICAL CONTRACTOR IS TO COORDINATE ALL OF HIS WORK WITH ALL OF THE OTHER DISCIPLINES AND TRADES, WATER, SEWER, FURNACE, VENT, ETC., ROUTING TAKE PRECEDENCE OVER THE ELECTRICAL WIRE AND CONDUIT ROUTING. THE ELECTRICAL CONTRACTOR IS TO RELOCATE OR REROUTE AS REQUIRED TO CLEAR SUCH SERVICES.
 8. COORDINATE ALL SITE WORK WITH CIVIL DRAWINGS.
 9. COORDINATE ALL DEMOLITION WITH UTILITY COMPANIES.
 10. SEE ELECTRICAL PHASING SCHEDULE FOR OTHER PERTINENT INFORMATION. THE ELECTRICAL CONTRACTOR IS TO PERFORM ALL WORK IN THE SEQUENCE REQUIRED BY THAT SCHEDULE AND PROVIDE ALL TEMPORARY SERVICES (10 OR 30, DISCONNECTS, POLES, METER BASES, ETC.) AS REQUIRED BY OWNER.

- UTILITY SUPPLY NOTES**
1. ALL UTILITY SERVICES SHOWN ARE FOR SCHEMATIC REPRESENTATION ONLY. NO EXPRESSED OR IMPLIED GUARANTEE IS GIVEN AS TO THE EXACT LOCATION, GRADE OR ELEVATION OF THE ABOVE MENTIONED ITEMS. ACTUAL LOCATIONS ARE TO BE BASED ON UTILITY COMPANY AND OWNER INSTRUCTIONS.
 2. THE CONTRACTOR IS RESPONSIBLE FOR ALL COST ASSOCIATED WITH THE SECONDARY SERVICES AND METER INSTALLATION FEES. ANY AID TO CONSTRUCTION COST TO BE PAID BY THE OWNER.
 3. BECAUSE OF ALL OF THE ABOVE REASONS, ALL ELECTRICAL CONTRACTORS DESIRING TO BID ON THIS PROJECT ARE REQUIRED TO VISIT THE JOB SITE PRIOR TO BIDDING SO THAT THEY MAY BECOME FAMILIAR WITH ALL CIRCUMSTANCES WHICH WILL AFFECT THE ELECTRICAL WORK. CONTRACTORS ARE TO INCLUDE ALL REQUIRED COST TO PROVIDE A COMPLETE, FUNCTIONAL AND CODE COMPLIANT ELECTRICAL INSTALLATION.
 4. CONTRACTOR SHALL INCLUDE OVERTIME AND AFTER HOURS PREMIUM LABOR CHANGES IN HIS BID AS REQUIRED TO COMPLETE THE INSTALLATION OF THIS PROJECT IN ACCORDANCE PROJECT IN ACCORDANCE WITH THE ARCHITECT'S SCHEDULE.
 5. COORDINATE JOINT USE AGREEMENT WITH TELEPHONE, CATV AND POWER CO. FOR UNDERGROUND SERVICE TO BUILDING.
 6. CONTRACTOR TO ALSO INCLUDE ANY COST FOR SERVICE TO BUILDING ASSOCIATED WITH UTILITIES OTHER THAN POWER.
 7. ALL REQUIRED 90° ELBOWS OF UTILITY CONDUITS TO BE OF SWEEPING TYPE AND RIGID (NOT PVC).
 8. THE CONTRACTOR IS RESPONSIBLE FOR ALL COST ASSOCIATED WITH TEMPORARY POWER SERVICES FROM THE LAST POWER CO. POWER OR DEMARCATION POINT TO TEMPORARY DISCONNECTING DEVICES, WIRING AND METER CHANGES FOR EITHER SINGLE PHASE OR 3-PHASE AS REQUIRED.

- ELECTRICAL KEYED NOTES**
1. PRIMARY ROUTE TO BE DETERMINED BY GEORGIA POWER. JOINT USE IS ALLOWED WITH ETC.
 2. PROPOSED LOCATION FOR 208/120V, 3Ø PAD MOUNT TRANSFORMER BY GEORGIA POWER. COORDINATE ALL WORK WITH GEORGIA POWER. PAD IS TO BE 10' FROM ANY SIDEWALKS, 10' OFF OF BUILDING WALLS AND 14' OFF ANY WINDOWS. C.T.S BUSHINGS, METER ON PEDESTAL PEDESTAL PROVIDED BY GEORGIA POWER, INSTALLED BY CONTRACTOR. SEE DETAIL ON THIS SHEET.
 3. SECONDARY SERVICE TO ATS ON BUILDING. SEE RISER DIAGRAM.
 4. IN THIS SAME DITCH AT 24", THE CONTRACTOR IS TO BE INCLUDE A 2-1/2" (EMPTY WITH FULL ROPE) FOR ETC USE. ETC CONDUIT IS TO HAVE LONG RADIUS TYPE SWEEPS. CONDUIT IS STUB UP AT A PEDESTAL NEXT TO THE TRANSFORMER. PROVIDE 1" DIRT SEPARATION FROM POWER CONDUITS. RUN AN EMPTY 2-1/2" (WITH FULL ROPE) IN A 24" DEEP DITCH TO STUB UP AT COMM BACKBOARD IN THE IT ROOM.
 5. COMMUNICATIONS SERVICE PEDESTAL. VERIFY REQUIREMENTS WITH ETC.
 6. UNDERGROUND FEED FROM GENERATOR TO ATS. SEE RISER DIAGRAM.
 7. ELECTRICAL SERVICE GEAR ON BUILDING. PANEL "M" LOCATED HERE. SEE RISER DIAGRAM.
 8. SERVICE FEED TO BUILDING PANEL "H". SEE RISER DIAGRAM.
 9. PROVIDE 120V ELECTRICAL CONNECTION TO MONUMENT SIGN. FIELD COORDINATE EXACT LOCATION OF SIGN WITH SIGN VENDOR. WIRE AS PER MANUFACTURER SPECS.
 10. RUN CIRCUIT THRU LIGHTING CONTRACTOR. CONTRACTOR IS TO BE CONTROLLED BY TIMECLOCK & PHOTOCELL ASSEMBLY.
 11. PIV PIT. FIELD COORDINATE LOCATION. PROVIDE CHAINS & ELECTRONIC MONITORS FOR OS&Y VALVES. RUN IN SAME NOTE 9 DITCH WHERE POSSIBLE.
 12. UNDERGROUND FEEDER TO BUILDING PANEL "P2". SEE RISER DIAGRAM.
 13. UNDERGROUND FEEDER TO BUILDING PANEL "P3". SEE RISER DIAGRAM.
 14. UNDERGROUND FEEDER TO BUILDING PANEL "P4". SEE RISER DIAGRAM.
 15. STANDBY GENERATOR. SEE SHEET E5.2.

Order Plans @

WWW.LDILLING.COM

ART TECH
ARCHITECTURE
& INTERIORS
ARTECH DESIGN GROUP, INC.
3400 COMBAT STREET, N.E.
ATLANTA, GA 30340
404.265.1511

GEORGIA MOUNTAINS
HEALTH SERVICES, INC.
HIGHLAND CROSSING SOUTH
TRACT G
EAST ELLIJAY, GEORGIA



ISSUE DATES

INITIAL	09-04-2020
1.	
2.	
3.	
4.	
5.	
6.	