



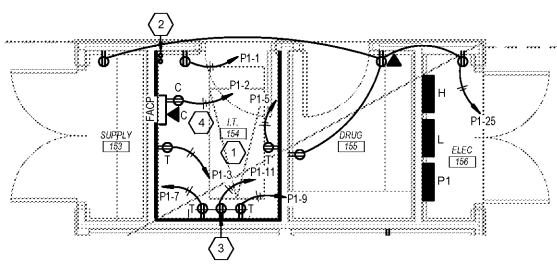
ISSUE DATES
INITIAL ISSUE 09-04-2020

JOB NO. 19-068 | DWN JLH | CKD GWE

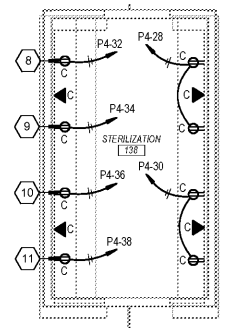
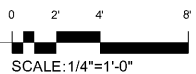
E2.2
ENLARGED POWER PLANS

| GENERAL PLAN NOTES | |
|--|--|
| 1. REFER TO DENTAL EQUIPMENT PLANS FOR EXACT ELECTRICAL REQUIREMENTS, LOCATIONS AND DETAILS PRIOR TO DOING ANY WORK. | |

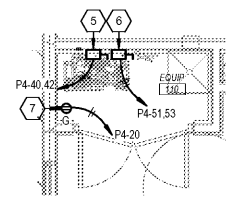
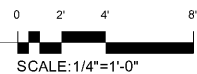
| KEYNOTE LEGEND | |
|----------------|--|
| MARK | KEYNOTE TEXT |
| 1 | COVER WALLS OF THIS ROOM WITH 3/4" FIRE RATED FLYWOOD. PROVIDE ERICO SERIES 'EGBA' GROUND BAR WITH INSULATORS AND BRACKET BAR TO BE 2" WIDE BY 12" LONG. RUN #2 SOLID CU BACK TO SERVICE GROUND. |
| 2 | TWO EACH 3"C. FOR COMMUNICATIONS. SEE SHEET COMM RISER AND SITE PLAN. |
| 3 | 30A TWIST LOCK TYPE TVSS RATED RECEPTACLE. FIELD COORDINATE NEMA CONFIGURATION WITH OWNERS IT INSTALLER. |
| 4 | PROVIDE RED LETTER MARKING ON FACE OF FACP THAT SAYS "FIRE ALARM PANEL FED FROM PANEL 'P1', CIRCUIT '2'". |
| 5 | PROVIDE 120/208V, 1-PHASE CONNECTION IN EQUIPMENT ROOM FOR USE WITH DENTAL AIR COMPRESSOR. PROVIDE 80A/2P DISCONNECT FUSED TO PANEL. RUN #10 CU. GROUND IN 1-1/4" C. TO PANEL. FIELD VERIFY EXACT LOCATION OF EACH WIRE TO UNIT AS PER MANUFACTURER SPECS. |
| 6 | PROVIDE 120/208V, 1-PHASE CONNECTION IN EQUIPMENT ROOM FOR USE WITH DENTAL VACUUM PUMP. PROVIDE 30A/2P DISCONNECT FUSED TO PANEL. RUN #10 CU. GROUND IN 1" C. TO PANEL. FIELD VERIFY EXACT LOCATION OF EACH WIRE TO UNIT AS PER MANUFACTURER SPECS. |
| 7 | OUTLET FOR USE WITH DENTAL STERILIZATION UNIT. FIELD VERIFY LOCATION. |
| 8 | OUTLET FOR USE WITH DENTAL STERILIZATION UNIT. FIELD VERIFY LOCATION. |
| 9 | OUTLET FOR USE WITH DENTAL STERILIZATION UNIT. FIELD VERIFY LOCATION. |
| 10 | OUTLET FOR USE WITH DENTAL STERILIZATION UNIT. FIELD VERIFY LOCATION. |
| 11 | OUTLET FOR USE WITH DENTAL ULTRASONIC CLEANER. FIELD VERIFY LOCATION. |
| 12 | REFER TO DENTAL EQUIPMENT PLANS FOR ELECTRICAL REQUIREMENTS AT DENTAL CHAIRS AND EQUIPMENT. |
| 13 | 2"C. SUB-FLOOR PIPE CHASE WITH FULL STRING SUPPLIED & INSTALLED BY THE ELECTRICAL CONTRACTOR. RUN FROM 4" ABOVE TOP PLATE DOWN TO 4" ABOVE FLOOR. MOUNT A SINGLE GANG MUD RING AT SILL PLATE. |
| 14 | VERTICAL PIPE CHASE WITH FULL STRING SUPPLIED & INSTALLED BY THE ELECTRICAL CONTRACTOR. RUN FROM 4" ABOVE TOP PLATE DOWN TO 4" ABOVE FLOOR. MOUNT A SINGLE GANG MUD RING AT SILL PLATE. |
| 15 | PROVIDE EMPTY SINGLE GANG BOX FLUSH IN WALL AT 23" A.F.F. (TO CENTER OF BOX) FOR USE WITH CONNECTION FROM X-RAY REMOTE EXPOSURE BUTTON. THIS BOX IS TO SITE DIRECTLY ABOVE THE 120V CONNECTION FOR THE PANORAMIC MACHINE. REFER TO DENTAL PLANS AND DETAILS. |
| 16 | PROVIDE 120/208V, 1-PHASE CONNECTION CONNECTION (SINGLE GANG BOX) FLUSH IN WALL AT 18" A.F.F. (TO CENTER OF BOX) FOR USE WITH PANORAMIC X-RAY UNIT. HARDWIRE OR PROVIDE RECEPTACLE TO MATCH NEMA CONFIGURATION OF CORD & PLUG (IF SUPPLIED WITH UNIT). FIELD VERIFY LOCATION & CONNECTION REQUIREMENTS. ALSO, DIRECTLY ABOVE THIS BOX, PROVIDE AN EMPTY SINGLE GANG BOX FLUSH IN WALL AT 23" A.F.F. (TO CENTER OF BOX) WITH AN EMPTY 1"C. (WITH FULL STRING) STUBBED OUT TO ABOVE NEAREST LAY-IN CEILING FOR USE WITH OWNER PROVIDED DATA CABLING & RJ45 OUTLET. |
| 17 | PROVIDE 120V CONNECTION CONNECTION (SINGLE GANG BOX) FLUSH IN WALL AT 18" A.F.F. (TO CENTER OF BOX) FOR USE WITH PANORAMIC X-RAY UNIT. HARDWIRE OR PROVIDE RECEPTACLE TO MATCH NEMA CONFIGURATION OF CORD & PLUG (IF SUPPLIED WITH UNIT). FIELD VERIFY LOCATION & CONNECTION REQUIREMENTS. |
| 18 | PROVIDE EMPTY SINGLE GANG BOX FLUSH IN WALL AT 42" A.F.F. FOR USE WITH X-RAY REMOTE EXPOSURE BUTTON. BUTTON TO OPERATE WITH THE PANORAMIC X-RAY UNIT. RUN AN EMPTY 1"C. (WITH FULL ROPE) FROM THIS BOX TO A SIMILAR BOX LOCATED IN IMAGING #36. |
| 19 | PROVIDE 120V CONNECTION FLUSH IN WALL FOR USE WITH INTRAORAL X-RAY UNIT. HARDWIRE OR PROVIDE RECEPTACLE TO MATCH NEMA CONFIGURATION OF CORD & PLUG (IF SUPPLIED WITH UNIT). FIELD VERIFY LOCATION & CONNECTION REQUIREMENTS. |
| 20 | PROVIDE 120V CONNECTION FLUSH IN FLOOR BELOW DENTAL CHAIR. REFER TO DENTAL PLANS AND DETAILS FOR LOCATION. PROVIDE SINGLE GANG PVC BOX FLUSH IN FLOOR. RUN A 1"C. BELOW SLAB TO NEAREST WALL THEN TO PANEL. |
| 21 | PROVIDE EMPTY SINGLE GANG BOX FLUSH IN WALL AT 42" A.F.F. FOR USE WITH X-RAY REMOTE EXPOSURE BUTTON. BUTTON TO OPERATE WITH THE EXAM ROOM INTRAORAL X-RAY UNIT. RUN AN EMPTY 1"C. (WITH FULL ROPE) FROM THIS BOX TO INTRAORAL X-RAY UNIT IN EXAM ROOM. |



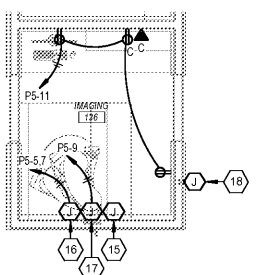
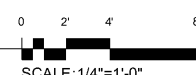
1 ENLARGED POWER PLAN - ELEC, DRUG, IT, SUPPLY
SCALE: 1/4" = 1'-0"



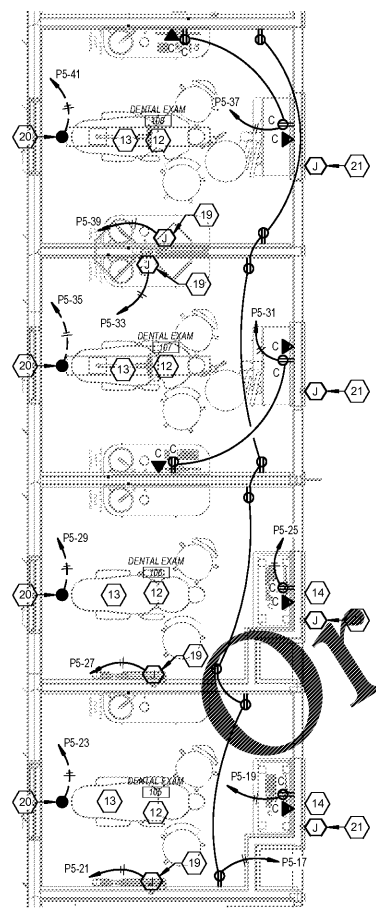
3 ENLARGED POWER PLAN - STERILIZATION
SCALE: 1/4" = 1'-0"



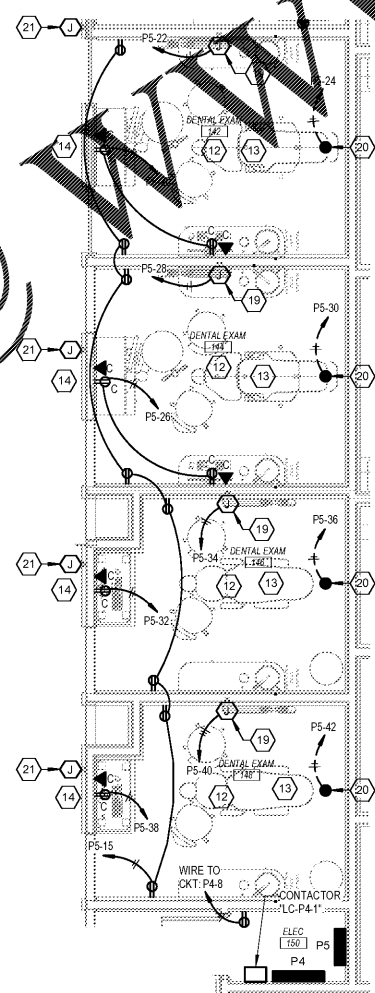
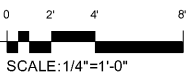
2 ENLARGED POWER PLAN - EQUIPMENT
SCALE: 1/4" = 1'-0"



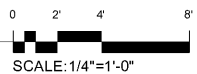
6 ENLARGED POWER PLAN - IMAGING
SCALE: 1/4" = 1'-0"



4 ENLARGED POWER PLAN - DENTAL EXAMS 105-108
SCALE: 1/4" = 1'-0"



5 ENLARGED POWER PLAN - DENTAL EXAMS 142-148
SCALE: 1/4" = 1'-0"



Order Plans @ www.LDILine.com