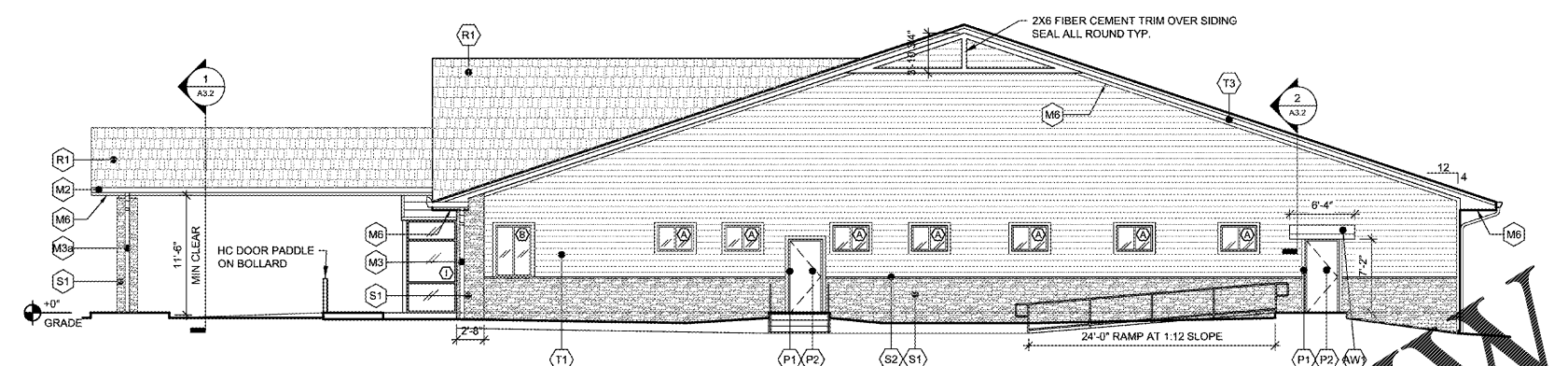
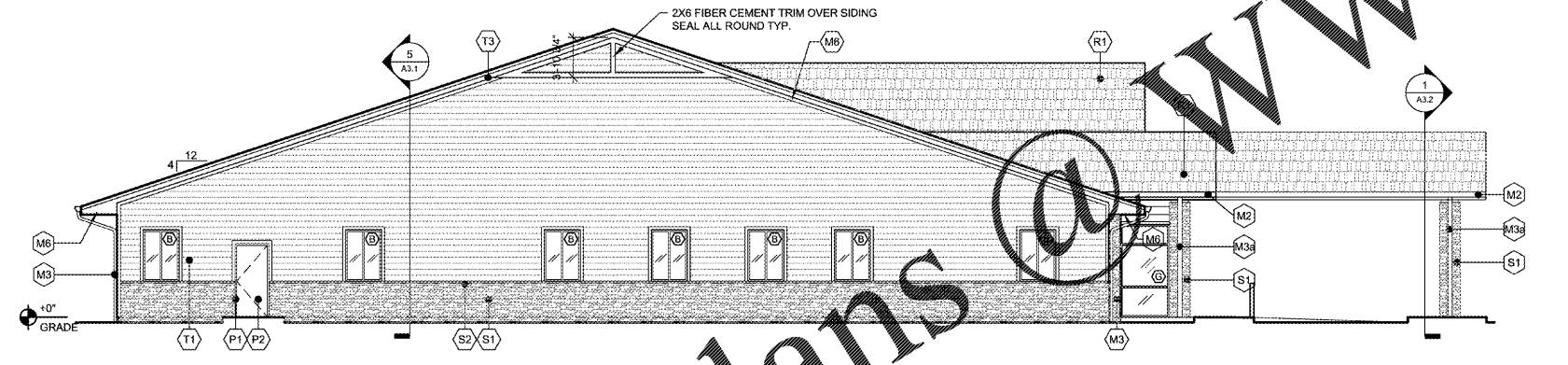


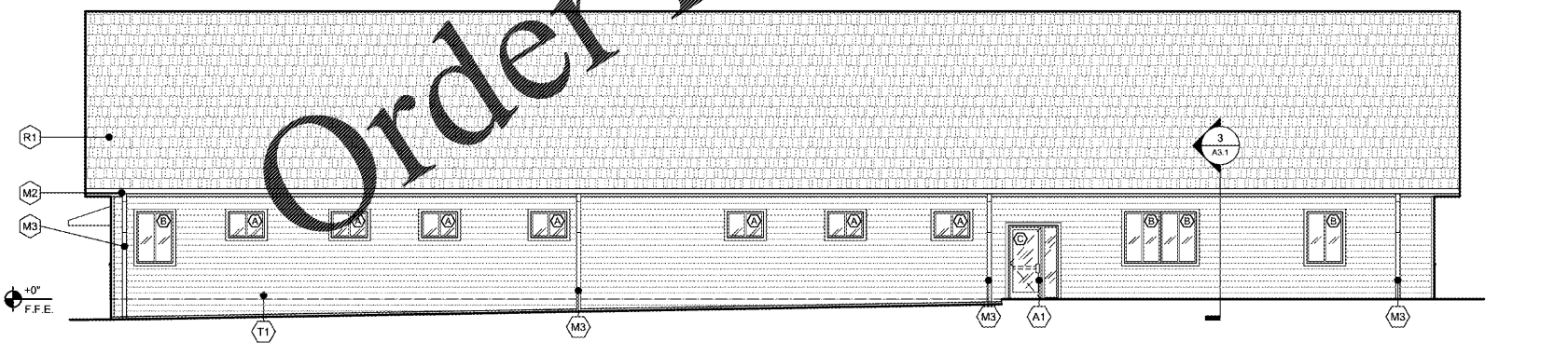
1 FRONT ELEVATION
SCALE: 1/8" = 1'-0"



2 RIGHT SIDE ELEVATION
SCALE: 1/8" = 1'-0"



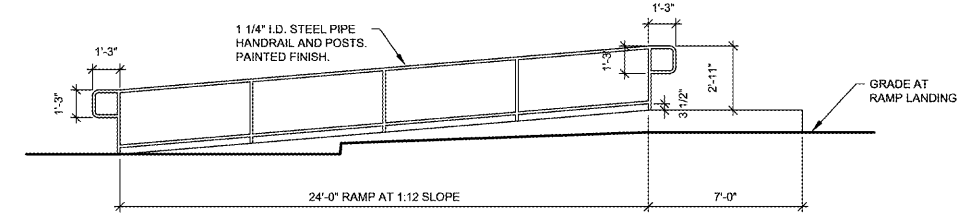
3 LEFT SIDE ELEVATION
SCALE: 1/8" = 1'-0"



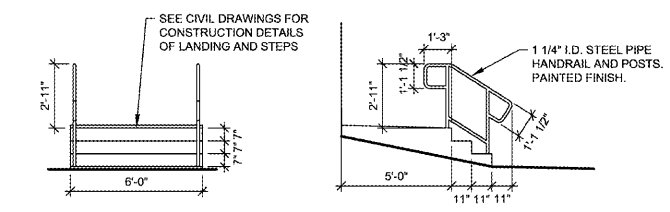
4 REAR ELEVATION
SCALE: 1/8" = 1'-0"

| MATERIAL LEGEND | | |
|---------------------|--|------------------------|
| SYMB. MATERIAL | | |
| STONE | | |
| S1 | REALSTONE SYSTEMS, LEDGESTONE "MOUNTAIN RUST" | |
| S2 | PRECAST STONE TRIM, NATURAL LIMESTONE FINISH | |
| ROOFING | | |
| R1 | ASPHALT SHINGLES, GAF GRAND SEQUOIA "MISSION BROWN" | |
| METALS | | |
| M1 | DRIP EDGE | WHITE |
| M2 | K-6 RAIN GUTTER | WHITE |
| M3a | 3"x4" RAIN LEADER | SW 6349 "PENNYWISE" |
| M3 | 3"x4" RAIN LEADER | MATCH SIDING |
| M4 | GABLE END LOUVER | SW 6349 "PENNYWISE" |
| M5 | NOT USED | |
| M6 | SOFFIT | |
| STOREFRONTS / WNDWS | | |
| A1 | MEDIUM BRONZE ANODIZED FRAME, TINTED GLASS (TEMPERED WHERE REQUIRED) | |
| AWINGS | | |
| AW1 | SUNBRELLA FIRESIST "TERRA COTTA" 82014-0000 | |
| SIDING / TRIM | | |
| T1 | FIBER-CEMENT SIDING & CORNER BOARDS | SW 6360 "FOLKSY GOLD" |
| T2 | 10" FIBER-CEMENT TRIM BAND | SW 6357 "CHOICE CREAM" |
| T3 | FIBER-CEMENT FACIA | WHITE |
| T4 | FIBER-CEMENT TRIM | WHITE |
| T5 | FIBER-CEMENT TRIM | SW 6360 "FOLKSY GOLD" |
| T6 | FIBER-CEMENT TRIM | SW 6349 "PENNYWISE" |
| GENERAL COLORS | | |
| P1 | SW 6349 "PENNYWISE" | |
| P2 | SW 6360 "FOLKSY GOLD" | |
| P3 | SW 6357 "CHOICE CREAM" | |

WWW.LDLINE.COM



5 SIDE ELEVATION
SCALE: 1/4" = 1'-0"



6 ELEVATIONS
SCALE: 1/4" = 1'-0"



ISSUE DATES
INITIAL 09-04-2020
1.
2.
3.
4.
5.
6.