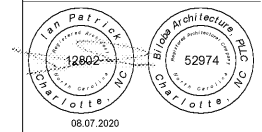




8801 JM Keynes Drive
 Suite 365
 Charlotte, NC 28262
 704.248.2022
 www.biloba.co

Mechanical and Electrical Engineer
McKnight Smith Ward Griffin Engineers
 4223 South Boulevard
 Charlotte, NC 28209
 704.527.2112
 NC Certificate of Licensure: F-0595



06.07.2020
 Drawn CADD
 Checked IWP
 Date August 7, 2020
 Revisions

Copyright 2020. All rights reserved. Printed or electronic drawings and documentation may not be reproduced in any form without written permission from Biloba Architecture, PLLC.

Brown Hall Renovation

Laurel Street, Brown Hall
 Greensboro, NC 27411
 SCO ID No. 20-22062-01A

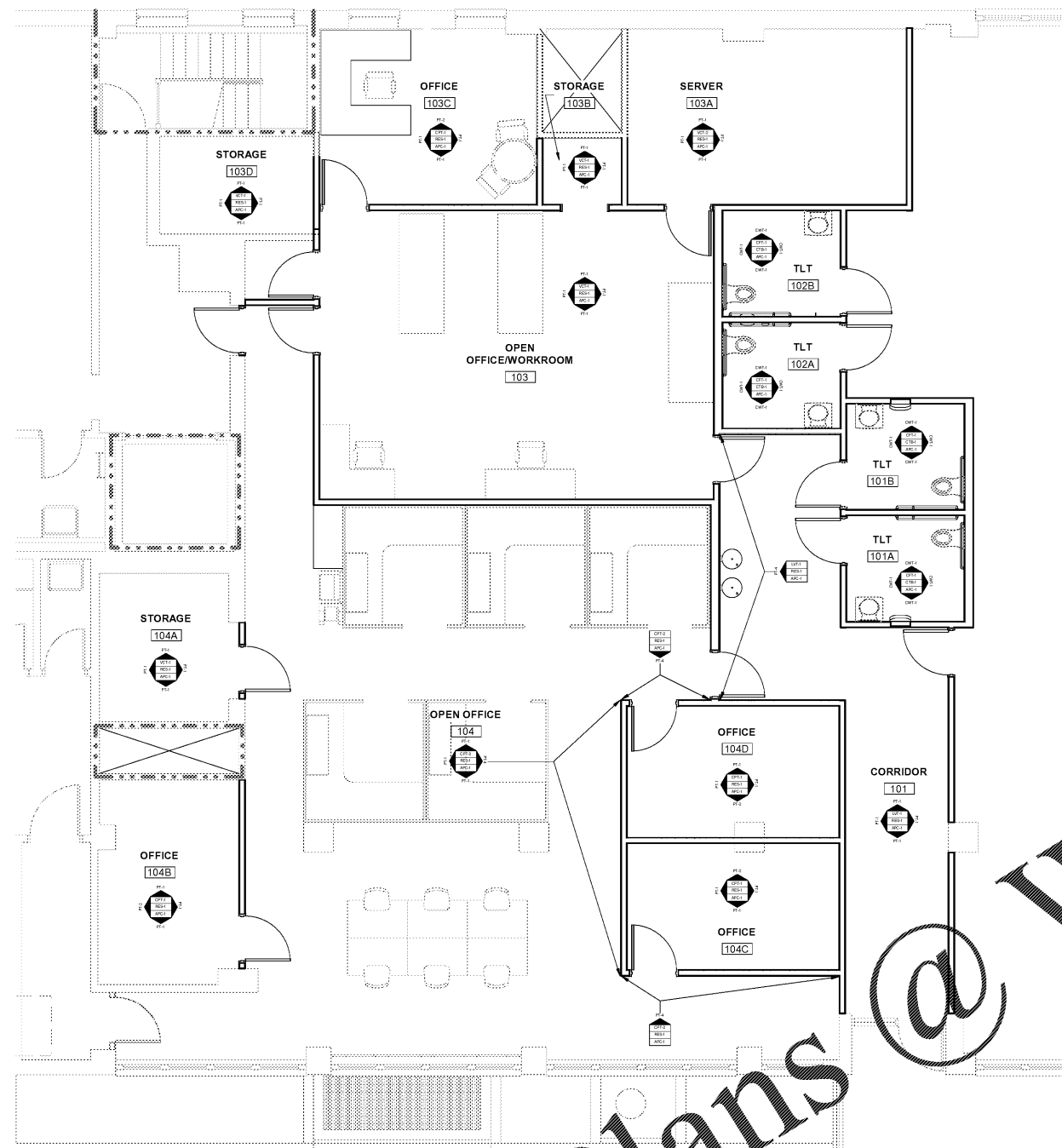
Project Number 106

Title
Finish Plan and Notes

Sheet

A211

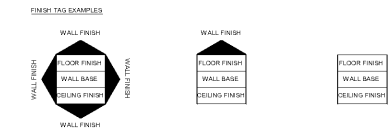
Plate of



FINISH NOTES

1. ALL INTERIOR FINISHES SHALL COMPLY WITH NC STATE BUILDING CODE CHAPTER 8.
2. MANUFACTURER'S NAME AND STOCK NUMBERS ARE PROVIDED TO IDENTIFY THE PATTERN, COLOR, AND TEXTURE DESIRED. OTHER MANUFACTURER'S PRODUCTS MEETING THE REQUIREMENTS SPECIFIED AND HAVING SIMILAR PATTERN, COLOR AND TEXTURE MAY BE ACCEPTABLE. SEE SPECS FOR LISTING OF ALTERNATE MANUFACTURERS.
3. "EXISTING" OR "EXIST" REFERS TO EXISTING FLOOR, WALL, CEILING SURFACES, OR STRUCTURE.
4. ALL DOOR FRAMES TO BE PAINTED SAME COLOR AS ADJACENT WALL PAINT.
5. ALL WALLS TO BE PAINTED PT-1 U.N.O.
6. PAINT ALL NEW AND EXISTING GYP. BD. CEILINGS PT-1 U.N.O.

FINISH SYMBOL LEGEND



FINISH LEGEND

- APC ACOUSTICAL PANEL CEILING
- PT PAINT
- LVT LUXURY VINYL TILE
- VCT VINYL COMPOSITE TILE
- CPT CARPET TILE
- CFT CERAMIC FLOOR TILE
- CWT CERAMIC WALL TILE
- CTB CERAMIC TILE BASE
- RES RESILIENT RUBBER BASE

WALL FINISH:

- PT-1 MATERIAL: PAINT
 MANUFACTURER: SHERWIN-WILLIAMS
 PRODUCT NO: SW7055
 COLOR: PURE WHITE
 GLOSS: EGGSHELL
- PT-2 MATERIAL: PAINT
 MANUFACTURER: SHERWIN-WILLIAMS
 PRODUCT NO: SW7650
 COLOR: ELLIE GRAY
 GLOSS: EGGSHELL
- PT-3 NOT USED

FLOOR FINISH:

- CPT-1 MATERIAL: CARPET TILE
 MANUFACTURER: INTERFACE
 PRODUCT NO: STREET SMART SS217
 COLOR: 105008 PASSAGEWAY
 SIZE: 25cm x 1m
- CPT-2 MATERIAL: CARPET TILE
 MANUFACTURER: INTERFACE
 PRODUCT NO: STREET SMART SS218
 COLOR: 105016 PASSAGEWAYLAGUNA
 SIZE: 25cm x 1m
- LVT-1 MATERIAL: LUXURY VINYL TILE
 MANUFACTURER: INTERFACE
 PRODUCT NO: STUDIO SET
 COLOR: A00701 SILVERLIGHT
 SIZE: 25cm x 1m
- VCT-1 MATERIAL: VINYL COMPOSITE TILE
 MANUFACTURER: TARKETT
 PRODUCT NO: TARKETT VCT (FORMERLY AZROCK)
 COLOR: CHARCOAL 1374
 SIZE: 12" x 12"
- VCT-2 MATERIAL: ANTI-STATIC VINYL COMPOSITE TILE
 MANUFACTURER: ARMSTRONG
 PRODUCT NO: EXCELON SDT
 COLOR: COAL 51959
 SIZE: 12" x 12"
- CFT-1 MATERIAL: CERAMIC FLOOR TILE
 MANUFACTURER: DALTEC
 PRODUCT NO: UNIFORM CONCRETE
 COLOR: UC18 BLACK
 FINISH MATTE
 SIZE: 24" x 24"

WALL BASE:

- RES-1 MATERIAL: RESILIENT RUBBER BASE
 MANUFACTURER: JOHNSONITE TARKETT
 PRODUCT NO: THERMOSET RUBBER (TYPE TS)
 COLOR: 20 CHARCOAL WG
 SIZE: 4"
- CTB-1 MATERIAL: CERAMIC TILE BASE
 MANUFACTURER: DALTEC
 PRODUCT NO: UNIFORM CONCRETE
 COLOR: UC18 BLACK
 FINISH MATTE
 SIZE: 6" x 12" OOVE BASE

CEILING FINISH:

- APC-1 MATERIAL: ACOUSTICAL PANEL CEILING
 MANUFACTURER: ARMSSTRONG
 PRODUCT NO: CALLA 2624
 COLOR: WHITE (WH)
 SIZE: 24" x 24"

1 FINISH PLAN
 A211 1/4" = 1'-0"

Order Plans @ WWW.LDILine.com

WWW.LDILine.com

E:\110_Brown Hall Renovation_CAD\PLAN_A211.dwg