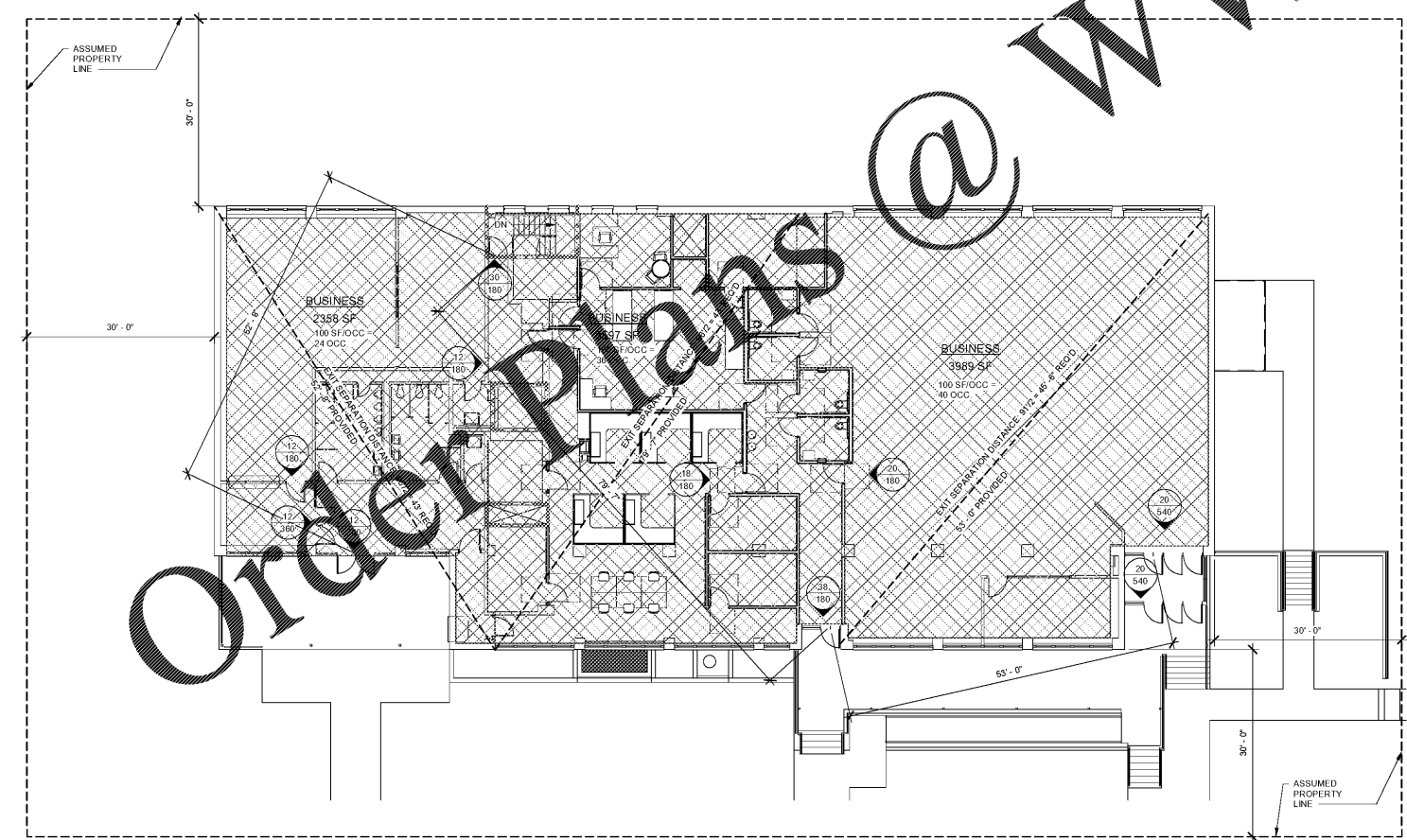


SHOWN FOR REFERENCE ONLY; NO WORK THIS LEVEL

1 LOWER LEVEL LIFE SAFETY PLAN
3/32" = 1'-0"



2 UPPER LEVEL LIFE SAFETY PLAN
3/32" = 1'-0"

LIFE SAFETY PLAN LEGEND

- EXISTING 2-HOUR RATED WALL
- COMMON PATH OF TRAVEL
- GREATEST EXIT ACCESS TRAVEL DISTANCE
- OCCUPANCY CATEGORY (SEE LEGEND FOR DESIGNATION)

- INDICATES PANIC HARDWARE
- ACTUAL NUMBER OF OCCUPANTS
- DIRECTION OF TRAVEL
- NUMBER OF OCCUPANTS THE EXIT CAN ACCOMMODATE
- DOOR APPROACH CLEARANCES (ADA/ANSI 117.1)
- NEW DOORS ONLY

AREA

- BUSINESS
- MECH./ELECT.
- STORAGE

GENERAL LIFE SAFETY FLOOR PLAN NOTES

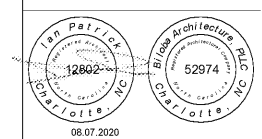
- FURNITURE AND EQUIPMENT SHOWN FOR REFERENCE ONLY (SEE FLOOR PLANS).
- EGRESS DISTANCE IS SHOWN AS A RANGE. "AS SHOWN ON PLANS" EQUATES TO A 36" DOOR.
- SEE PLANS FOR LOCATION OF ALL FIRE EXTINGUISHER DEVICES.

Order Plans @ www.LDILine.com

Biloba Architecture, PLLC

8601 JM Keynes Drive
Suite 365
Charlotte, NC 28262
704.248.2022
www.biloba.co

Mechanical and Electrical Engineer
McKnight Smith Ward Griffin Engineers
4223 South Boulevard
Charlotte, NC 28209
704.527.2112
NC Certificate of Licensure: F-0595



06.07.2020

Drawn: CADD
Checked: IWP
Date: August 7, 2020
Revisions:

Copyright 2020. All rights reserved. Printed or electronic drawings and documentation may not be reproduced in any form without written permission from Biloba Architecture, PLLC.

Brown Hall Renovation
Laurel Street, Brown Hall
Greensboro, NC 27411
SCO ID No. 20-22082-01A

Project Number: 106
Title: Life Safety Plans

Sheet: G101
Plate of