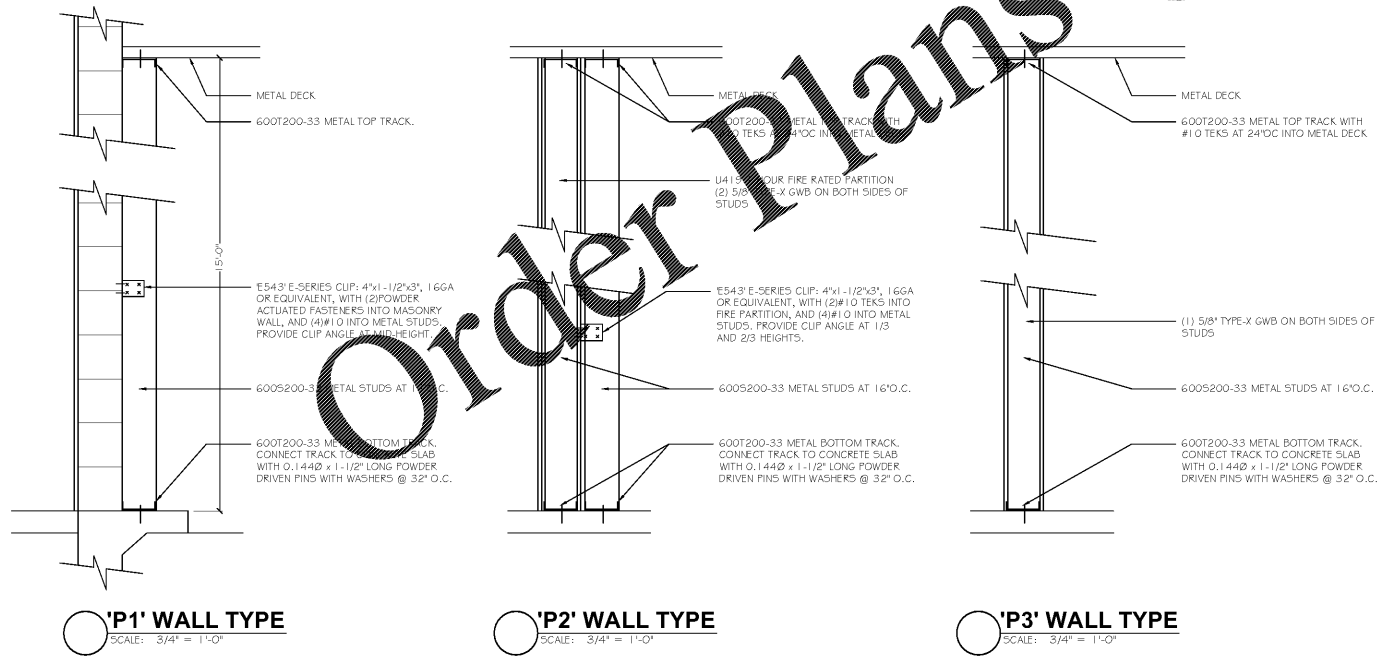


**NOTE:**  
 G.C. TO PROVIDE SHOP DRAWINGS  
 AND PRODUCT APPROVALS FOR  
 NEW STOREFRONTS OR AS MAY  
 BE REQUIRED.

\*TRULITE STOREFRONT (IMPACT RESISTANT) NOA #17-1017.14  
 \*TRULITE STOREFRONT DOORS (IMPACT RESISTANT) NOA #17-1017.13  
 READY ACCESS DRIVE-THROUGH WINDOW (IMPACT RESISTANT) NOA #16-0307.06

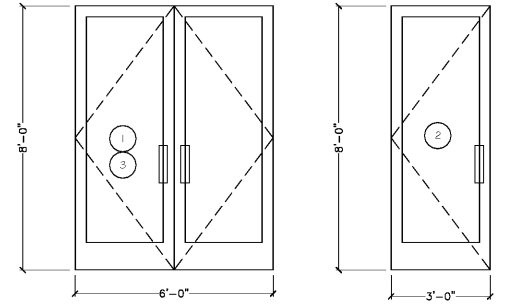
**STOREFRONT ELEVATIONS**  
 SCALE: 3/8" = 1'-0"  
 ALL DIMENSIONS TO BE VERIFIED ON SITE PRIOR TO START OF ANY WORK



**'P1' WALL TYPE**  
 SCALE: 3/4" = 1'-0"

**'P2' WALL TYPE**  
 SCALE: 3/4" = 1'-0"

**'P3' WALL TYPE**  
 SCALE: 3/4" = 1'-0"

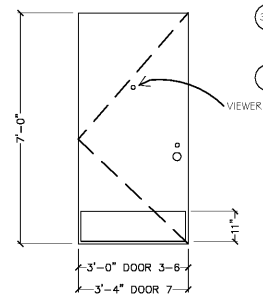


**1 DOOR**  
 OPENING: (2)3'-0"x8'-0"x1 3/4"x AD x AF  
 MATERIAL: ALUMINUM / GLASS  
 FINISH: CLEAR

**2 DOOR**  
 OPENING: 3'-0"x8'-0"x1 3/4"x AD x AF  
 MATERIAL: ALUMINUM / GLASS  
 FINISH: CLEAR

**FRAME**  
 MATERIAL: ALUMINUM  
 FINISH: CLEAR

**HARDWARE**  
 ENTRANCE DOOR HARDWARE SHALL CONSIST OF OFFSET PULLS, ADAMS RITE MS 1825 BEAD BOLT LOCK, NORTON 1605 SURFACE CLOSERS WITH BACK CHECK, 9" "CLASSIC" STRAIGHT DOOR PULLS IN POLISHED STAINLESS OR CHROME, AND STANDARD THRESHOLDS, LOCKS, CYLINDERS, AND THRESHOLDS



**3-6 DOOR**  
 OPENING: 3'-0"x7'-0"x1 3/4"x MD x MF  
 MATERIAL: HOLLOW METAL  
 FINISH: PAINT - REFER TO EXTERIOR ELEVATIONS

**7 DOOR**  
 OPENING: 3'-4"x7'-0"x1 3/4"x MD x MF  
 MATERIAL: HOLLOW METAL  
 FINISH: PAINT - REFER TO EXTERIOR ELEVATIONS

**FRAME**  
 MATERIAL: HOLLOW METAL  
 FINISH: PAINT - REFER TO EXTERIOR ELEVATIONS

**HARDWARE**  
 DOOR TO RECEIVE:  
 HINGES: 4 EACH HAGER: MACPRO NP891 NRP US320  
 EXT DEVICE: 1 EACH DETEX HV40 EB 1628  
 CLOSER: 1 EACH DORMA DORMAB916  
 WEWER: 1 EACH DU SUENG DS/1000  
 KICKPLATES: 1 EACH ROCKWOOD 10"x40"x0504630  
 THRESHOLD: 1 EACH NATIONAL GUARD 325 x 48" x AL  
 DOOR SWEEP: 1 EACH PEMKO DOOR BRUSH SWEEP 48MILL  
 WEATHERSTRIP: 1 SET NGP DOOR WEATHER STRIP  
 LOCK: 1 SET FALCON FAL100C 1/2 CORE  
 1 SET FLACON LV2049C MORTISE DOOR SHELL

**DOOR SCHEDULE**  
 SCALE: 3/8" = 1'-0"

WWW.DILine.com

OWNERS:  
 ESTEL DEVELOPMENT LLC  
 763 NE 193RD TERRACE  
 MIAMI, FL 33179

DATE	NO.	DATE	SCALE	REVISION
8/14/20				

**GERSHEN ASSOCIATES, P.A.**  
 Architecture / Planning  
 Construction Consulting  
 9708 50th AVE. HIGHWAY 7 MANALAPAN, FL 33189  
 (305) 861-1125  
 REGISTRATION NO. AA 0002786

SEAL  
 PAUL B. GERSON  
 STATE OF FLORIDA  
 REGISTERED ARCHITECT  
 #100043

PROJECT LOCATION  
 ESTEL FLAZA  
 2890-2894 WEST BROWARD BLVD  
 FT LAUDERDALE, FLORIDA 33312

SHEET TITLE  
 DOOR, WINDOW, PARTITION SCHEDULE

SHEET NO.  
**A6.0**

JOB NO.  
 2020-002