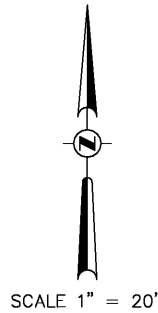




Call 811 or www.sunshine811.com two full business days before digging to have utilities located and marked.

Check positive response codes before you dig!



SCALE 1" = 20'

LEGEND

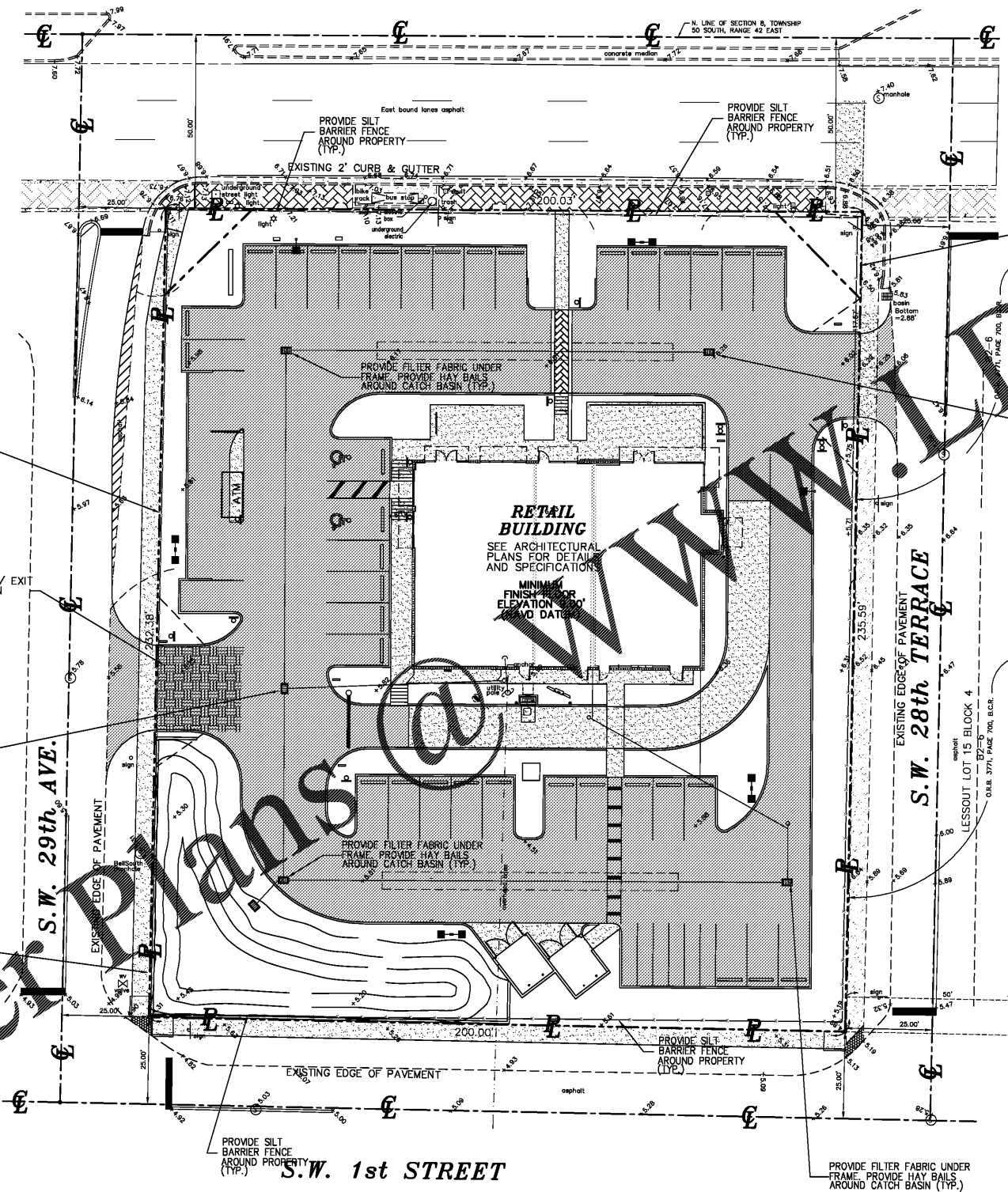
- EXISTING PAVEMENT
- PROPOSED PAVEMENT
- 9.10 EXISTING ELEVATION
- 10.9 PROPOSED ELEVATION
- PROPOSED CONCRETE
- PROPOSED ASPHALT PAVEMENT
- RUN OFF DIRECTION
- EXIST. TYPE "F" CURB & GUTTER
- PROP. TYPE "F" CURB & GUTTER
- ⊙ DRAINAGE STRUCTURE NUMBER

STORMWATER POLLUTION PREVENTION PLAN

WEST BROWARD BOULEVARD
(STATE ROAD 842)

NOTE TO CONTRACTOR

CONTRACTOR SHALL FAMILIARIZE HIMSELF WITH THE SOILS REPORT PREPARED UNIVERSAL SOILS AND SHALL IMPLEMENT ALL RECOMMENDATIONS IDENTIFIED. CONTRACTOR TO NOTIFY ENGINEER IF THERE IS A DISCREPANCY BETWEEN THE PLANS AND THE REPORT.



STORMWATER POLLUTION PREVENTION PRACTICES: NPDES

1. TREE PROTECTION AND PRUNING SHALL BE ACCOMPLISHED AS DETAILED IN LANDSCAPE PLANS AND AS PER CURRENT LANDSCAPE ORDINANCE.
2. THE STORMWATER POLLUTION PREVENTION PLAN, SWPPP, SUBMITTED TO PUBLIC WORKS, SHALL DESCRIBE IN DETAIL HOW THE CONSTRUCTION EFFORT WILL BE PHASED WITH REGARDS TO MINIMIZING EROSION PROBLEMS BY THE USE OF TEMPORARY AND PERMANENT EROSION CONTROL MEASURES, FOR THE VARIOUS SEQUENCES OF CONSTRUCTION OPERATIONS. ANY MODIFICATIONS MUST BE APPROVED BY CITY OF FT. LAUDERDALE - NPDES SECTION, DEPARTMENT OF PUBLIC WORKS.
3. ENVIRONMENTAL CONTROL FEATURES AS PROVIDED IN THE SWPPP, ARE TO BE INSTALLED AT ALL AREAS OF EXCAVATION OR FILL FOR DRAINAGE SYSTEM OR STRUCTURE CONSTRUCTION PRIOR TO SUCH EXCAVATION OR FILL. INLET ENTRANCES ARE ALSO TO BE PROTECTED FROM SILTATION.
4. ALL ENVIRONMENTAL CONTROL FEATURES ARE TO BE MAINTAINED THROUGHOUT THE LIFE OF THE PROJECT IN ACCORDANCE WITH N.P.D.E.S. REQUIREMENTS. THE CONTRACTOR MUST INSURE THAT ALL EROSION CONTROL FEATURES FUNCTION PROPERLY AT ALL TIMES.
5. ALL EROSION AND MATERIAL DEPOSITS MUST BE CONTAINED WITHIN THE PROJECT LIMITS.
6. ANY DAMAGED OR INEFFECTIVE ROCK BAGS ARE TO BE REPLACED WITH NEW ONES. THE LOCATION OF ROCK BAGS INSTALLATION IS AS MENTIONED IN THE SWPPP PLANS. THE PROJECT ENGINEER MAY SPECIFY OTHER AREAS AS NECESSARY.
7. DITCH BOTTOM INLETS SHALL BE PROTECTED FROM SEDIMENT INTAKE UNTIL PROJECT IS COMPLETE. ELEVATION OF GROUND OUTSIDE INLET TOP SHALL NOT BE HIGHER THAN INLET TOP. ROCK BAGS SHALL BE INSTALLED AROUND INLET TOP. COMPLETED INLETS IN PAVED AREAS SHALL ALSO BE PROTECTED WITH ROCK BAGS TO PREVENT SEDIMENT INTAKE.
8. CURB INLETS ALSO SHALL BE PROTECTED FROM SEDIMENT INTAKE UNTIL THE PROJECT IS COMPLETE. ALL EXPOSED SLOPED MATERIAL ADJACENT TO INLET, SHALL BE COVERED WITH EROSION CONTROL MATTING WITH OUTER LIMITS PROTECTED BY ROCK BAGS.
9. STOCKPILED MATERIAL SHALL NOT BE LEFT IN EROSION PRONE AREAS UNLESS PROTECTED BY COVER OR ROCK BAGS.
10. INSPECTION OF EROSION CONTROL MEASURES AND CONDITION OF ADJACENT PROPERTIES, SHALL BE PERFORMED DAILY BY THE CONTRACTOR'S REPRESENTATIVE AND THE PROJECT ENGINEER. DEFICIENCIES SHALL BE NOTED AND CORRECTED.
11. ANY OFFSITE SEDIMENT DISCHARGE TO A MUNICIPAL SEPARATE STORM WATER SYSTEM ARISING FROM THE CONTRACTOR'S ACTIVITIES IS NOT ALLOWED.
12. THE USE OF SANITARY SEWERS, FRENCH DRAINS, COVER DITCHES AND/OR ROCK DRAINS FOR THE DISPOSAL OF WASTEWATER IS EXPRESSLY PROHIBITED.

Order Plans @ www.DIline.com

ZAMORA & ASSOCIATES, INC.
ENGINEERING LAND PLANNING
11410 N. KENDALL DRIVE SUITE 302
MIAMI, FLORIDA 33176 (305) 273-7801

PROJECT: OWNER:
ESTEL PLAZA
2890 - 2894 W. BROWARD BLVD
FT. LAUDERDALE, FLORIDA 33312
ESTEL DEVELOPMENT LLC
763 NORTHEAST 193 TERRACE
MIAMI, FLORIDA 33179
STORMWATER POLLUTION PREVENTION PLAN

Date	By	Description

Digitally signed by Gerardo Zamora
Date: 2020.08.30.02:08:30:02 -0500

GERARDO ZAMORA P.E.
CIVIL ENGINEER
P.E. No. 44207
E.B. 0006791
STATE OF FLORIDA

THIS SHEET HAS BEEN ORIGINALLY SIGNED & SEALED BY GERARDO ZAMORA, P.E., ON THE DATE ADJACENT TO THE SEAL.
PRINTED COPIES OF THIS DOCUMENT ARE NOT CONSIDERED VALID & SHOULD NOT BE USED UNLESS THE ORIGINAL SIGNATURE AND SEAL ARE VERIFIED OR ANY ELECTRONIC COPIES.
PRINTED COPIES SHALL HAVE AN ORIGINAL SIGNATURE AND SEAL.

For The Firm By:
GERARDO ZAMORA, P.E.
FL. Reg. No. 44207
Civil Engineer

Scale: 1" = 20'
Designed By:
Drawn By:
Checked By: G.Z.
Date: 2/5/2020
Project No: 2020-17
SHEET No.
C-8