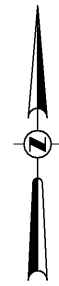




Call 811 or www.sunshine811.com two full business days before digging to have utilities located and marked.

Check positive response codes before you dig!



SCALE 1" = 20'

LEGEND

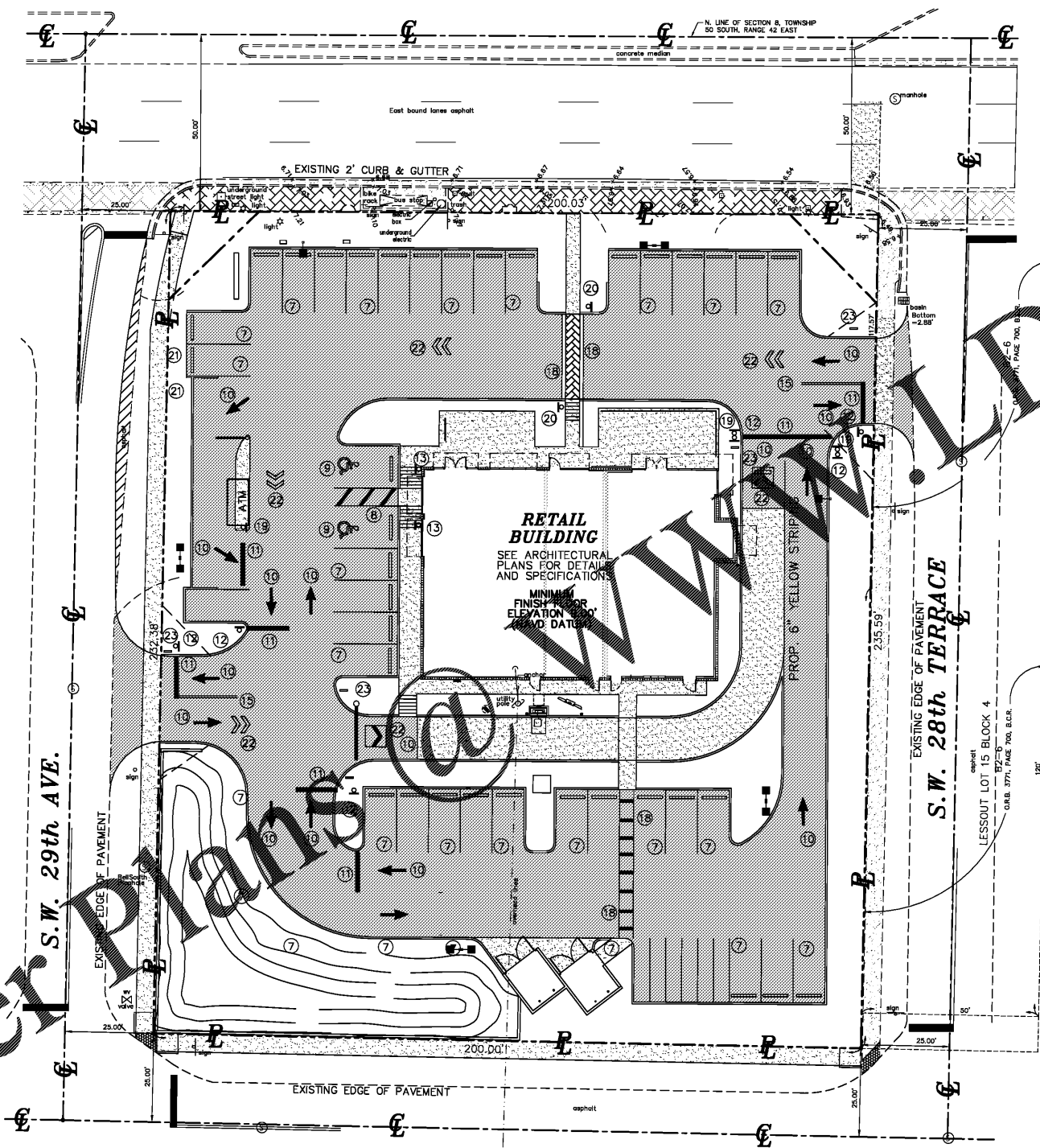
- EXISTING PAVEMENT
- PROPOSED PAVEMENT
- 9.10 EXISTING ELEVATION
- 10.9 PROPOSED ELEVATION
- PROPOSED CONCRETE
- PROPOSED ASPHALT PAVEMENT
- RUN OFF DIRECTION
- EXIST. TYPE "F" CURB & GUTTER
- PROP. TYPE "F" CURB & GUTTER
- ⊙ DRAINAGE STRUCTURE NUMBER

PAVEMENT MARKING & SIGNAGE PLAN

**WEST BROWARD BOULEVARD
(STATE ROAD 842)**

NOTE TO CONTRACTOR

CONTRACTOR SHALL FAMILIARIZE HIMSELF WITH THE SOILS REPORT PREPARED UNIVERSAL SOILS AND SHALL IMPLEMENT ALL RECOMMENDATIONS IDENTIFIED. CONTRACTOR TO NOTIFY ENGINEER IF THERE IS A DISCREPANCY BETWEEN THE PLANS AND THE REPORT.



STRIPING & SIGNAGE NOTE

ALL NEW PAVEMENT MARKINGS AND SIGNAGE SHALL BE AS PER CURRENT MANUAL ON UNIFORM TRAFFIC CONTROL DEVICES (MUTCD) STANDARDS.

ALL SIGNS SHALL COMPLY WITH BROWARD COUNTY TRAFFIC ENGINEERING DEPARTMENT STANDARDS.

SCHEDULE NOTES

- 1 NEW 6" TYPE "D" CONCRETE CURB
- 2 NEW WHEEL STOP/BUMPER
- 3 EXISTING PAVEMENT LINE
- 4 NEW ASPHALT PAVEMENT
- 5 NEW CONCRETE PAVEMENT
- 6 NEW CONCRETE SIDEWALK (6" THICK)
- 7 NEW 4" PAINTED STRIPING (DOUBLE)
- 8 NEW 4" PAINTED WHITE STRIPING
- 9 NEW TYPICAL PAINTED "WHITE" HANDICAP SYMBOL
- 10 NEW PAINTED DIRECTIONAL ARROW
- 11 NEW 24" WIDE PAINTED WHITE STOP BAR (THERMOPLASTIC)
- 12 NEW STOP SIGN (R1-1)
- 13 NEW TYPICAL "HANDICAP" SIGN
- 14 NEW HANDICAP RAMP (1:12 MAX SLOPE)
- 15 NEW 25' OF 2-6" YELLOW THERMOPLASTIC
- 16 NEW CONCRETE BOLLARD
- 17 NEW LIGHT POLES
- 18 NEW 12" WHITE STRIPING (4' O.C.) THERMOPLASTIC
- 19 NEW "DO NOT ENTER" SIGN
- 20 NEW "PEDESTRIAN CROSSING" SIGN
- 21 NEW ELECTRIC VEHICLE CHARGING STATION
- 22 NEW STARBUCKS TRAFFIC ARROW
- 23 NEW STARBUCKS DIRECTIONAL SIGN

Order Plans

www.dlLine.com

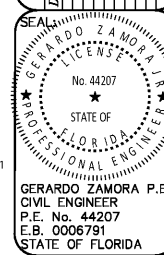
ZAMORA & ASSOCIATES, INC.
ENGINEERING LAND PLANNING
11410 N. KENDALL DRIVE SUITE 302
MIAMI, FLORIDA 33176 (305) 273-7801

PROJECT: **ESTEL PLAZA**
2890 - 2894 W. BROWARD BLVD
FT. LAUDERDALE, FLORIDA 33312

OWNER: **ESTEL DEVELOPMENT LLC**
763 NORTHEAST 193 TERRACE
MIAMI, FLORIDA 33179

PAVEMENT MARKING & SIGNAGE PLAN

Date	By	Description



Digitally signed by Gerardo Zamora
Date: 2020.08.21 08:32:36 -04'00'

GERARDO ZAMORA P.E.
CIVIL ENGINEER
P.E. No. 44207
E.B. 0006791
STATE OF FLORIDA

For the Firm By:
GERARDO ZAMORA, P.E.
FL. Reg. No. 44207
Civil Engineer

Scale: 1" = 20'

Designed By:
Drawn By:
Checked By: G.Z.
Date: 2/5/2020
Project No: 2020-17

SHEET No.
C-2