



© 2019 STARBUCKS COFFEE COMPANY

STARBUCKS[®]
2401 UTAH AVENUE SOUTH
SEATTLE, WASHINGTON 98134
(206) 318-1575

THESE DRAWINGS AND THE PROJECT MANUAL ARE CONFIDENTIAL AND SHALL REMAIN THE SOLE PROPERTY OF STARBUCKS CORPORATION, WHICH IS THE OWNER OF THE COPYRIGHT IN THIS WORK. THEY SHALL NOT BE REPRODUCED (IN WHOLE OR IN PART), SHARED WITH THIRD PARTIES OR USED IN ANY MANNER ON OTHER PROJECTS OR EXTENSIONS TO THIS PROJECT WITHOUT THE PRIOR WRITTEN CONSENT OF STARBUCKS CORPORATION. THESE DRAWINGS AND SPECIFICATIONS ARE INTENDED TO EXPRESS DESIGN INTENT FOR A PROTOTYPICAL STARBUCKS STORE (WHICH IS SUBJECT TO CHANGE AT ANYTIME) AND DO NOT REFLECT ACTUAL SITE CONDITIONS. NEITHER PARTY SHALL HAVE ANY OBLIGATION NOR LIABILITY TO THE OTHER (EXCEPT STATED ABOVE) UNTIL A WRITTEN AGREEMENT IS FULLY EXECUTED BY BOTH PARTIES.

STARBUCKS TEMPLATE VERSION | 2019.01.11

Design Forum Architects Inc.

2505 Byrns Rd
Miamisburg, OH 45342
Tel: (644) 804-7700

Donald J. Rathman
Architect in Charge
License: AR0017303

Design Forum Engineering

2505 Byrns Rd
Miamisburg, OH 45342
Tel: (644) 804-7700

Timothy L. Harwarding, PE
Professional Engineer
License: 62078

FOR CONSTRUCTION

PROJECT NAME:
HARDEN & POLK

PROJECT ADDRESS:
1310 LAKESIDE VILLAGE CIR
LAKELAND, FL 33803

STORE #: 2965
PROJECT #: 21120-060
ISSUE DATE: 08/10/2020
DESIGNER: RAI MONTERO
PRODUCTION DESIGNER: PAUL HARLOR
CHECKED BY: RAI MONTERO

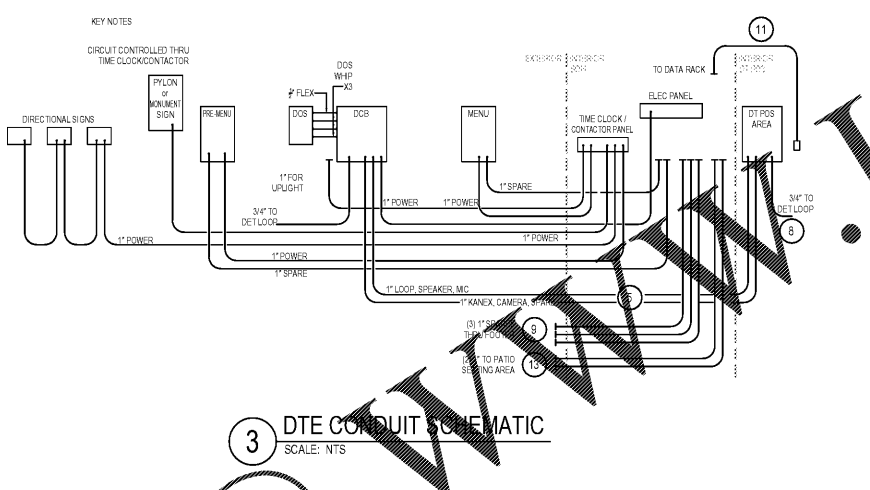
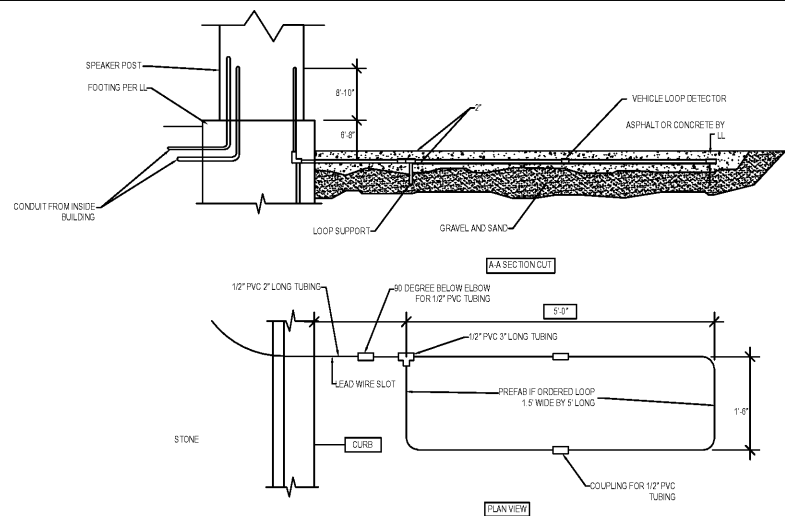
Revision Schedule		
Rev	Date	Description

SHEET TITLE:
ELECTRICAL SITE DETAILS
SCALE: AS SHOWN

SHEET NUMBER:
E-004.1

KEY NOTES: (NOT ALL NECESSARILY USED AT THIS LOCATION)

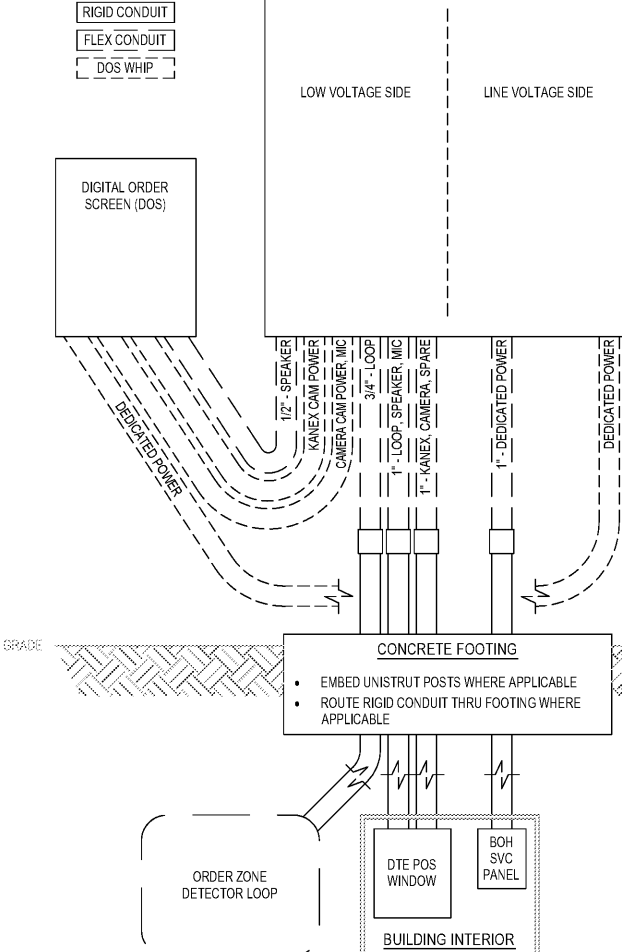
- 1 PROVIDE POWER CONNECTION TO STARBUCKS MONUMENT SIGNAGE. PROVIDE A WEATHERPROOF JUNCTION BOX WITH DISCONNECT SWITCH.
- 2 PROVIDE POWER CONNECTION TO PRE-MENU SIGN. PROVIDE WEATHERPROOF JUNCTION BOX WITH DISCONNECT SWITCH.
- 3 EXISTING 1" PVC CONDUIT FOR FUTURE USE TO MENU SIGN AND TO PRE-MENU SIGN TO REMAIN.
- 4 PROVIDE POWER CONNECTION TO MENU SIGN. PROVIDE WEATHERPROOF JUNCTION BOX WITH DISCONNECT SWITCH.
- 5 EXISTING (2) 1" PVC CONDUITS FROM OCS/SPEAKER POST (AKA DOS/DCB) TO DRIVE-THRU WINDOW TO REMAIN.
- 6 PROVIDE POWER CONNECTION TO OCS/SPEAKER POST (AKA DOS/DCB). PROVIDE WEATHERPROOF JUNCTION BOX WITH DISCONNECT SWITCH.
- 7 PROVIDE POWER CONNECTION TO STARBUCKS DIRECTIONAL SIGNAGE. NOTE THAT UP TO THREE DIRECTIONAL SIGNS CAN BE SERVED BY A SINGLE CIRCUIT. ADDITIONAL SIGNS REQUIRE A NEW DEDICATED CIRCUIT AND CONDUIT. PROVIDE A WEATHERPROOF JUNCTION BOX WITH DISCONNECT SWITCH.
- 8 EXISTING 3/4" PVC CONDUIT FOR EACH OF TWO TENANT-FURNISHED DETECTOR LOOP TO REMAIN.
- 9 EXISTING 1" PVC CONDUIT THRU FOUNDATION WALL OUT REAR OF BUILDING, CAPPED AND TERMINATED ABOVE CEILING TO REMAIN.
- 10 PROVIDE POWER CONNECTION TO CANOPY UPLIGHT FROM ELECTRICAL PANEL.
- 11 EXISTING 1-1/2" CONDUIT FROM DATA RACK AT MANAGER WORKSTATION TO DRIVE-THRU BUMP TO REMAIN.
- 12 CIRCUIT SERVING THIS DEVICE SHALL BE AUTOMATICALLY CONTROLLED. FURNISH AND INSTALL ALL CONDUIT, WIRE, CONNECTIONS, AND CONTACTORS NECESSARY TO ENSURE A FUNCTIONAL SYSTEM (SEE LIGHTING CONTROL DIAGRAM ON E-6001).
- 13 EXISTING 1" PVC CONDUIT TO PATIO AREA FROM ELECTRICAL PANEL TO REMAIN.



ELECTRICAL SITE PLAN NOTES

- A. VERIFY FULL SCOPE OF WORK WITH LANDLORD WORK LETTER PRIOR TO BID. NO EXTRAS OR CHANGE ORDERS SHALL BE GIVEN FOR THE GC'S FAILURE TO FULLY UNDERSTAND THE SCOPE.
- B. COORDINATE ALL CONDUIT ROUTING WITH ARCHITECTURAL AND CIVIL PLANS, AND OTHER TRADES.
- C. SIGN LOCATIONS ON THIS PLAN ARE FOR REFERENCE ONLY. ACTUAL LOCATIONS SHALL BE DETERMINED FROM THE ARCHITECTURAL AND CIVIL PLANS, AND THE CONSTRUCTION MANAGER.
- D. REFER TO POWER PLAN FOR PANELBOARD LOCATIONS.
- E. FOR ALL SIGN / MENU LOCATIONS, VERIFY ALL ELECTRICAL REQUIREMENTS WITH MANUFACTURER PRIOR TO ROUGH-IN. PROVIDE CONDUCTORS AND OVERCURRENT PROTECTION FOR A COMPLETE INSTALLATION.

DOS CONTROL BOX (DCB)



NOTES

1. GC TO INSTALL DCB
2. GC TO PROVIDE AND INSTALL DCB SUPPORT FRAME, CONCRETE FOOTING AND ALL NEW RIGID AND FLEXIBLE CONDUITS.
3. GC TO PROVIDE, INSTALL AND CONNECT ALL LINE VOLTAGE LINES.
4. GC TO CONNECT DEDICATED POWER WHIP BETWEEN DOS AND DCB.
5. STARBUCKS VENDOR TO CONNECT ALL LOW-VOLTAGE WHIPS AND CABLING BETWEEN DOS AND DCB.
6. POWER TO DOS MAY NOT BE ON EMS OR LIGHTING CONTROL.

Order Plans @ www.WallLine.com