



© 2019 STARBUCKS COFFEE COMPANY

STARBUCKS
2401 UTAH AVENUE SOUTH
SEATTLE, WASHINGTON 98134
(206) 318-1575

THESE DRAWINGS AND THE PROJECT MANUAL ARE CONFIDENTIAL AND SHALL REMAIN THE SOLE PROPERTY OF STARBUCKS CORPORATION, WHICH IS THE OWNER OF THE COPYRIGHT IN THIS WORK. THEY SHALL NOT BE REPRODUCED (IN WHOLE OR IN PART), SHARED WITH THIRD PARTIES OR USED IN ANY MANNER ON OTHER PROJECTS OR EXTENSIONS TO THIS PROJECT WITHOUT THE PRIOR WRITTEN CONSENT OF STARBUCKS CORPORATION. THESE DRAWINGS AND SPECIFICATIONS ARE INTENDED TO EXPRESS DESIGN INTENT FOR A PROTOTYPICAL STARBUCKS STORE (WHICH IS SUBJECT TO CHANGE AT ANYTIME) AND DO NOT REFLECT ACTUAL SITE CONDITIONS. NEITHER PARTY SHALL HAVE ANY OBLIGATION NOR LIABILITY TO THE OTHER (EXCEPT STATED ABOVE) UNTIL A WRITTEN AGREEMENT IS FULLY EXECUTED BY BOTH PARTIES.

STARBUCKS TEMPLATE VERSION | 2019.01.11

Design Forum Architects Inc.

2558 Byers Rd
Miamisburg, OH 45342
Tel: (614) 804-7700

Donald J. Wetman
Architect in Charge
License: AR0017303

Design Forum Engineering

2558 Byers Rd
Miamisburg, OH 45342
Tel: (614) 804-7700

Timothy L. Hahnemann, P.E.
Professional Engineer
License: 62076

FOR CONSTRUCTION

PROJECT NAME:
HARDEN & POLK

PROJECT ADDRESS:
1310 LAKESIDE VILLAGE CIR
LAKELAND, FL 33803

STORE #: 2965
PROJECT #: 21120-060
ISSUE DATE: 08/10/2020
DESIGNER: RAI MONTERO
PRODUCTION DESIGNER: PAUL HARLOR
CHECKED BY: RAI MONTERO

SHEET TITLE:
MECHANICAL PLAN

SCALE: AS SHOWN

SHEET NUMBER:

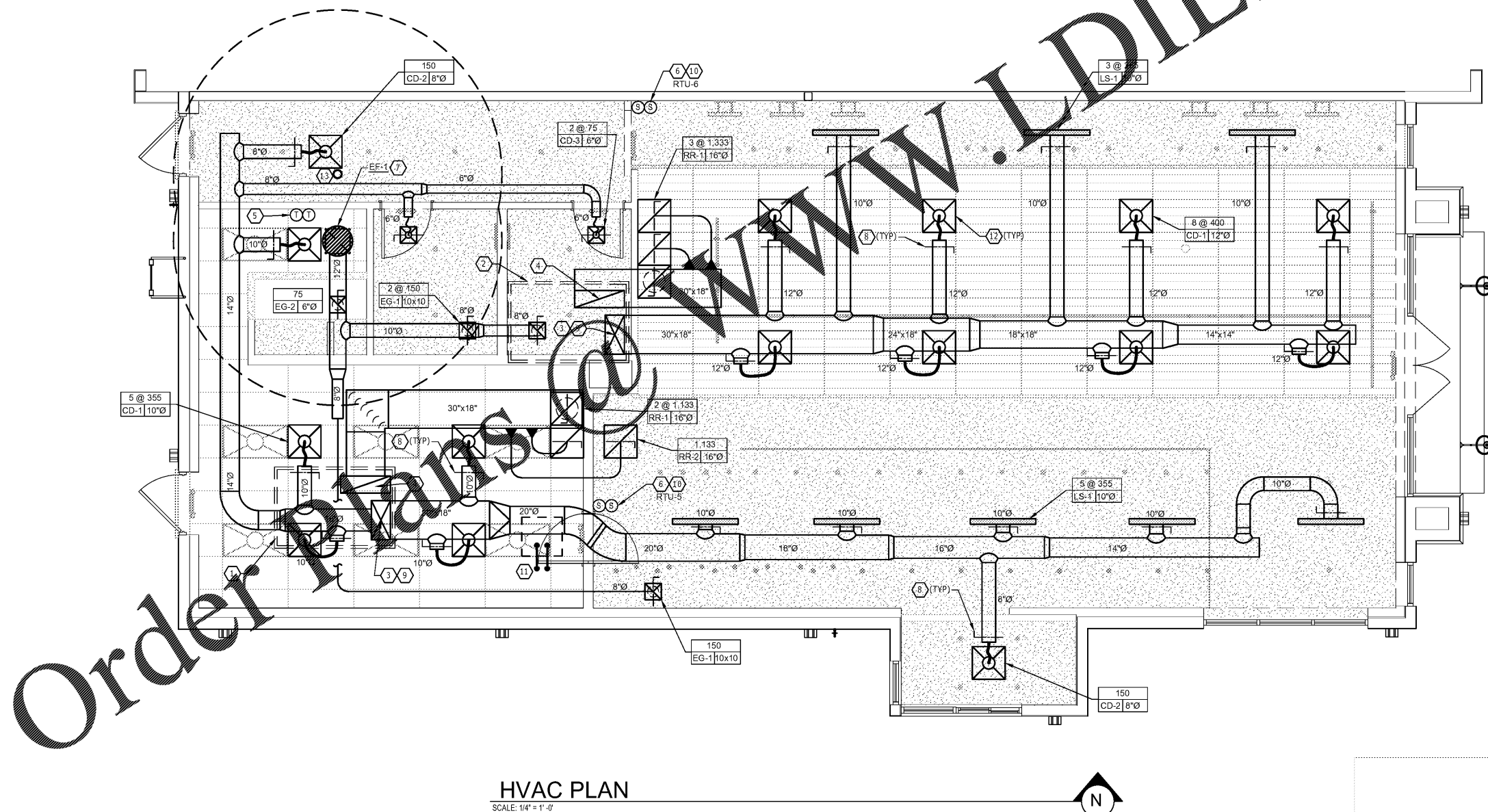
M101

KEYED NOTES

- EXISTING ROOFTOP UNIT (RTU-5) ON ROOF BY LANDLORD UNDER SEPARATE PERMIT.
- EXISTING ROOFTOP UNIT (RTU-6) ON ROOF BY LANDLORD UNDER SEPARATE PERMIT.
- FULL SIZE SUPPLY AIR DISCHARGE DUCT WITH 1-1/2" DUCT LINER. SEE EXPOSED DUCTWORK SECTION OF SPECIFICATION FOR OPTIONAL COMBINATION THERMAL/ACOUSTICAL INSULATION WITHIN DOUBLE WALL DUCT AS AN ALTERNATIVE TO DUCT LINER.
- FULL SIZE RETURN AIR DUCT WITH 1-1/2" DUCT LINER. SEE EXPOSED DUCTWORK SECTION OF SPECIFICATION FOR OPTIONAL COMBINATION THERMAL/ACOUSTICAL INSULATION WITHIN DOUBLE WALL DUCT AS AN ALTERNATIVE TO DUCT LINER.
- WALL MOUNTED THERMOSTATS FOR ROOFTOP AC UNITS. MULTIPLE THERMOSTATS SHALL BE STACKED IN VERTICAL CONFIGURATION WITH A MINIMUM 8" CLEARANCE BELOW EACH THERMOSTAT. CONFIRM EXACT LOCATION WITH OWNER. THERMOSTAT FURNISHED BY LANDLORD WITH RTU.
- REMOTE TEMPERATURE SENSOR FURNISHED BY LANDLORD WITH RTU. (INSTALLED BY CONTRACTOR).
- EXISTING 12" DIAMETER EXHAUST DUCT UP TO EXISTING EXHAUST FAN EF-1. 10' CLEARANCE RADIUS BETWEEN EXHAUST DISCHARGE AND OUTDOOR INTAKE IS SHOWN WITH DASHED CIRCLE.
- MANUAL BALANCE DAMPER (TYPICAL).
- EXISTING SMOKE DETECTOR IN SUPPLY AIR STREAM TO SHUT DOWN UNIT UPON DETECTION BY LANDLORD UNDER SEPARATE PERMIT.
- WALL MOUNTED CO2 SENSOR COMPATIBLE WITH ROOFTOP UNIT FURNISH AND INSTALLED BY HVAC CONTRACTOR AT 60" AFF. FIELD VERIFY ALL REQUIREMENTS.
CO2 SET POINTS:
100% DESIGN O2 RATE = 1000 PPM
FOR EQC2 CREDIT SET POINT = 800 PPM.
- AIR COOLED CONDENSER UNIT ON ROOF FOR ICE MACHINE BELOW. SET UNIT ON APPROVED ROOFCURB PROVIDED BY THE LANDLORD. EXTEND REFRIGERANT PIPING TO ICE MACHINE. SEAL ROOF OPENING WEATHERTIGHT. REFER TO DETAILS #3 & #4 ON SHEET M-601. FIELD VERIFY ALL REQUIREMENTS AND INCLUDE ALL COST IN BIDS FOR A COMPLETE SYSTEM.
- HVAC CONTRACTOR SHALL PAINT DIFFUSER TO MATCH COLOR OF CEILING. COORDINATE WITH G.C. AND OWNER. FIELD VERIFY ALL REQUIREMENTS.
- EXISTING 4" SANITARY VENT THRU ROOF TO REMAIN WITHOUT MODIFICATION. FIELD VERIFY VENT THRU ROOF GREATER THAN 10'-0" AWAY FROM FRESH AIR INTAKES.

GENERAL NOTES

- SEE SHEET M-601 FOR EQUIPMENT & AIR DEVICE SCHEDULES.
- MECHANICAL CONTRACTOR RESPONSIBLE FOR SITE INVESTIGATION PRIOR TO START OF WORK TO REVEAL FULL SCOPE OF PROJECT.
- COORDINATE WITH ELECTRICAL CONTRACTOR FOR POWER CONNECTIONS TO ALL MECHANICAL EQUIPMENT.
- DUCTWORK ABOVE CEILINGS SHALL BE ROUTED AS HIGH AS POSSIBLE. REFER TO CEILING PLANS AND SECTIONS FOR HEIGHT OF EXPOSED DUCTWORK.
- CONTRACTOR SHALL INSTALL REFRIGERANT PIPING TO/FROM REMOTE CONDENSER FOR ICE MACHINE AND/OR WALK IN COOLERS.
- SEE ARCHITECTURAL SHEETS FOR PAINTING AND COLORS OF ALL EXPOSED DUCTWORK, DIFFUSERS AND GRILLES.
- SEE ARCHITECTURAL SHEETS FOR DIMENSIONS OF ALL EXPOSED DUCT LOCATIONS.



HVAC PLAN

SCALE: 1/4" = 1'-0"



Order Plans @ www.LDILine.com