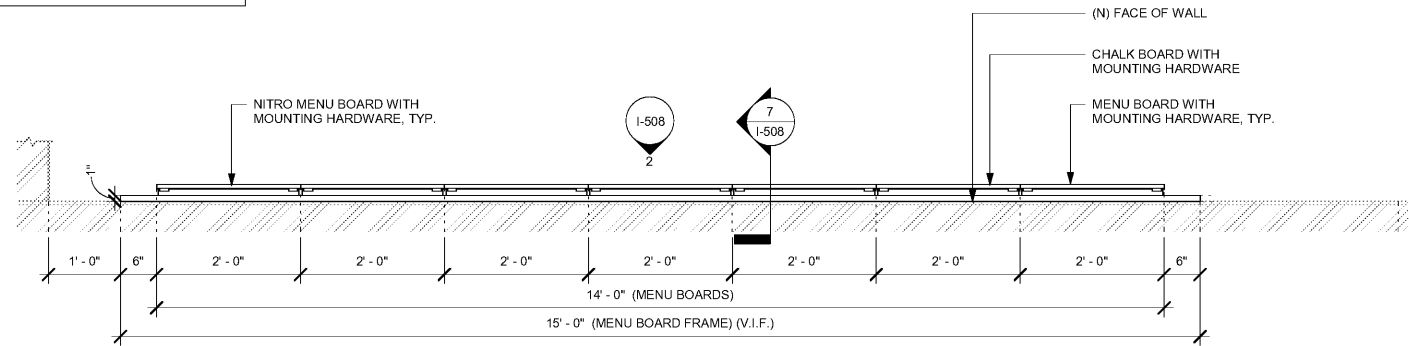
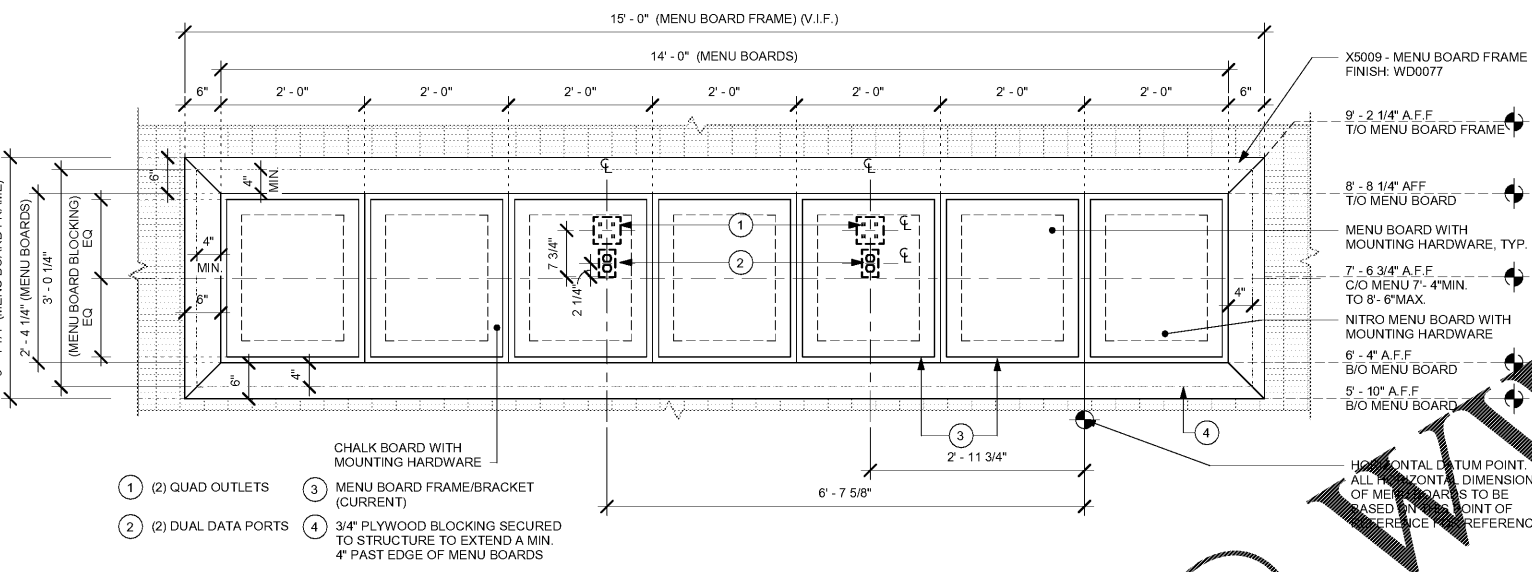


NOTE:  
SHOP DRAWINGS TO BE APPROVED BY  
SB DESIGNER PRIOR TO FABRICATION.

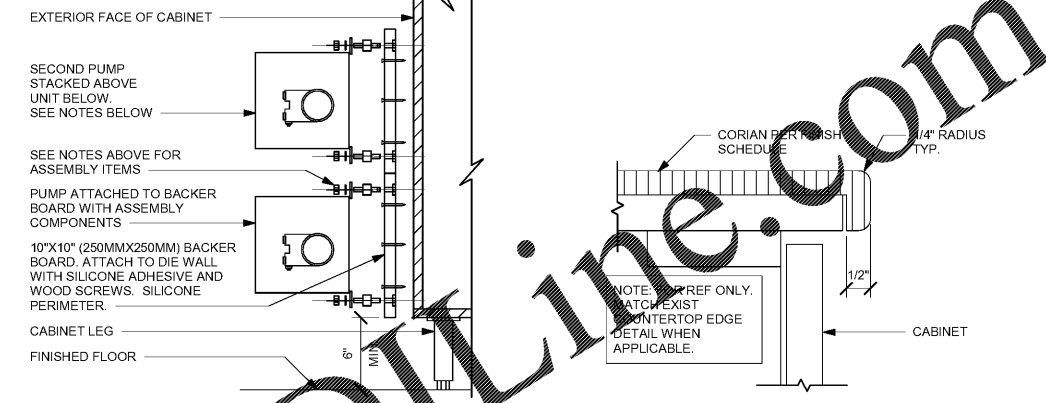


1 MENU BOARD - PLAN  
Scale: 3/4" = 1'-0"



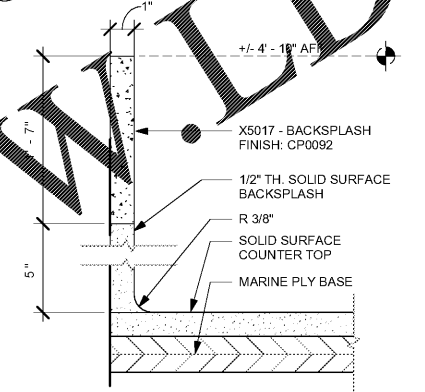
2 MENU BOARD - ELEVATION  
Scale: 3/4" = 1'-0"

- NOTES:**
1. LOCATE PUMP WITHIN CORD LENGTH LIMIT. ORIENT WITH PUMP HEAD LEFT, RIGHT AND AT BOTTOM. LOOSEN PUMP HEAD CLAMP, ROTATE AND RE-TIGHTEN AS REQUIRED PER ORIENTATION TO PROVIDE FRONT ACCESS TO FLOW. ADJUSTMENT WITHIN CORD LENGTH LIMIT.
  2. USE LOCKTITE ON ISOLATOR THREADS. DO NOT OVER TIGHTEN.
  3. LOOSEN PUMP HEAD CLAMP, ROTATE AND RE-TIGHTEN AS REQUIRED FOR PUMP ORIENTATION.
  4. BACKER BOARD ASSEMBLY INCLUDES:
    - (1) BACKER BOARD
    - (2) TENETS, 1/4-20 VENDOR MOUNTED
    - (3) WOOD SCREWS #8 1-1/4" (32MM)
    - (4) NEOPRENE ISOLATORS, KARMAN RUBBER, K84-60 NEOPRENE
    - (5) LOCK NUTS, 1/4-20 NYLON
    - (6) WASHERS, 1/4" (7MM) FLAT

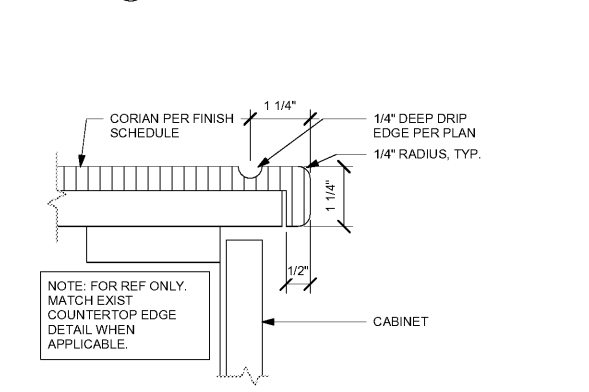


3 ESPRESSO PUMP MOUNTED AT CABINET  
Scale: 1 1/2" = 1'-0"

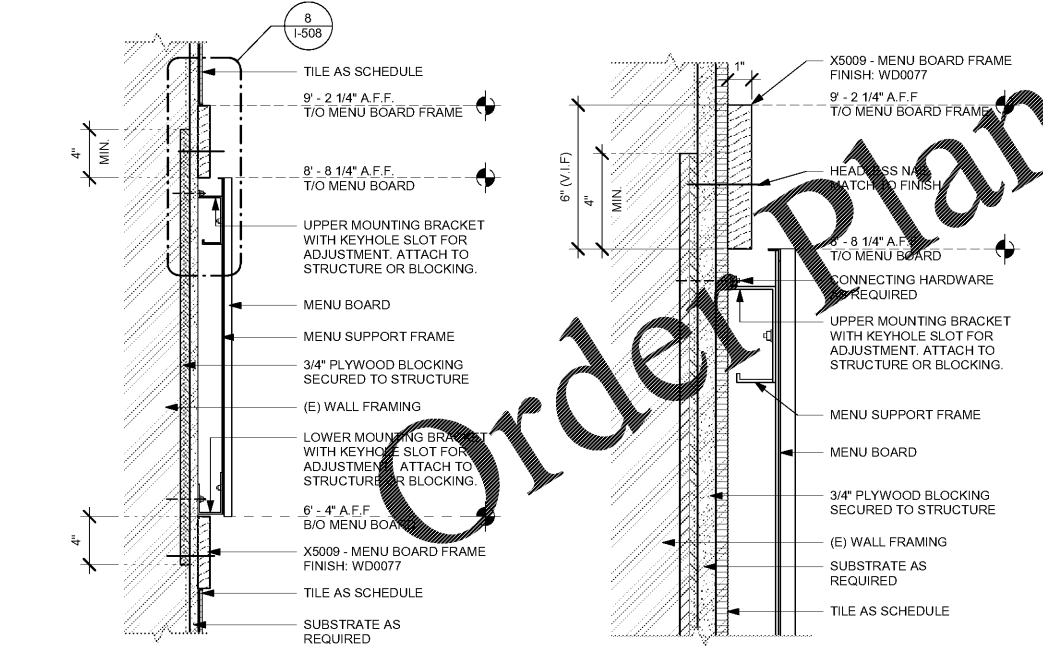
4 TYP. CORIAN EDGE - FRONTLINE  
Scale: 6" = 1'-0"



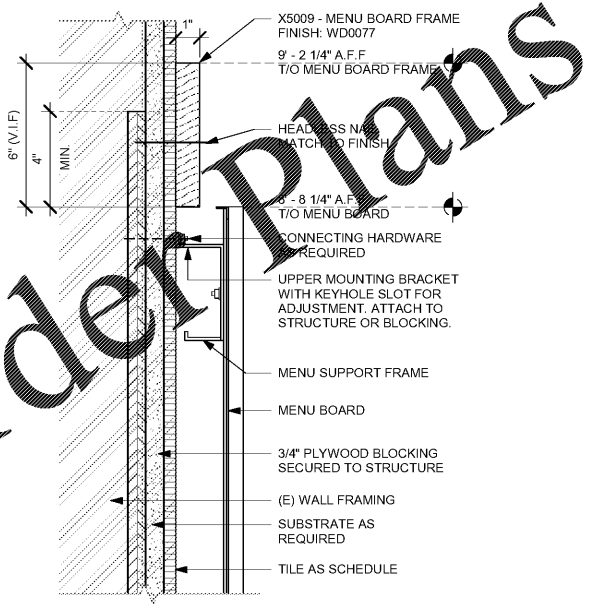
5 BACKSPASH DETAIL  
Scale: 6" = 1'-0"



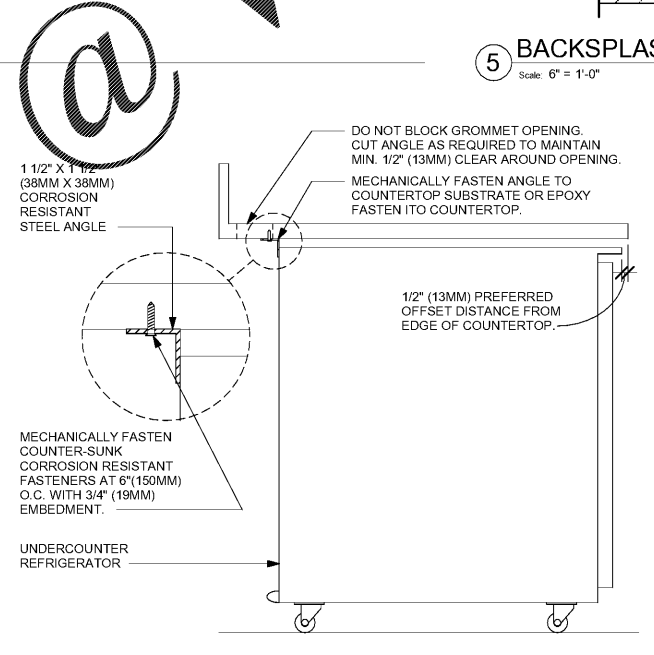
6 TYP. CORIAN DRIP EDGE - FRONTLINE  
Scale: 6" = 1'-0"



7 MENU BOARD - SECTION  
Scale: 1 1/2" = 1'-0"



8 MENU BOARD FIXING DETAIL  
Scale: 3" = 1'-0"

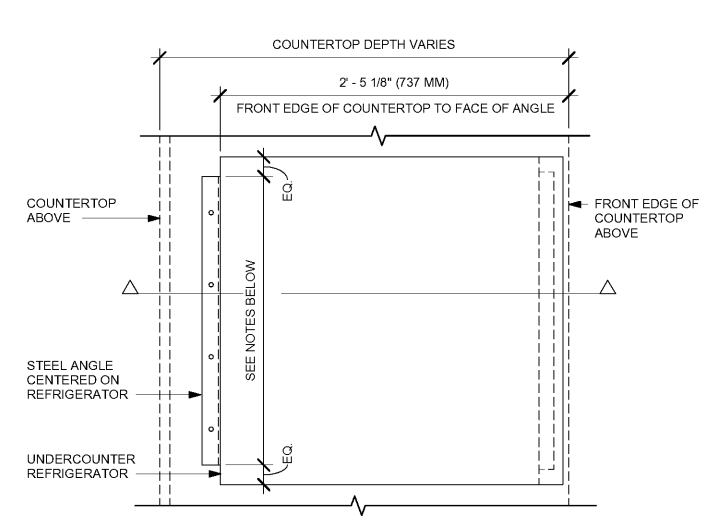


**SECTION VIEW**

**NOTE**

1. 2" (51MM) X 1 1/2" X 1 1/2" (38MM X 38MM) STEEL ANGLE TO BE USED WITH SINGLE DOOR REFRIGERATORS
2. 4" (127MM) X 1 1/2" X 1 1/2" (38MM X 38MM) STEEL ANGLE TO BE USED WITH DOUBLE DOOR REFRIGERATORS

9 UNDERCOUNTER REFRIGERATOR STOP INSTALLATION  
Scale: 1 1/2" = 1'-0"



**PLAN VIEW**



**STARBUCKS**  
2401 UTAH AVENUE SOUTH  
SEATTLE, WASHINGTON 98134  
(206) 318-1575

THESE DRAWINGS AND THE PROJECT MANUAL ARE CONFIDENTIAL AND SHALL REMAIN THE SOLE PROPERTY OF STARBUCKS CORPORATION, WHICH IS THE OWNER OF THE COPYRIGHT IN THIS WORK. THEY SHALL NOT BE REPRODUCED IN WHOLE OR IN PART, SHARED WITH THIRD PARTIES OR USED IN ANY MANNER ON OTHER PROJECTS OR EXTENSIONS TO THIS PROJECT WITHOUT THE PRIOR WRITTEN CONSENT OF STARBUCKS CORPORATION. THESE DRAWINGS AND SPECIFICATIONS ARE INTENDED TO EXPRESS DESIGN INTENT FOR A PROTOTYPICAL STARBUCKS STORE (WHICH IS SUBJECT TO CHANGE AT ANYTIME) AND DO NOT REFLECT ACTUAL SITE CONDITIONS. NEITHER PARTY SHALL HAVE ANY OBLIGATION, NOR LIABILITY TO THE OTHER EXCEPT STATED ABOVE UNTIL A WRITTEN AGREEMENT IS FULLY EXECUTED BY BOTH PARTIES.

STARBUCKS TEMPLATE VERSION: I2020-02-10

**Design Forum Architects Inc.**  
2506 Byers Rd  
Miamisburg, OH 45342  
Tel: (844) 804-7700  
Donald J. Rehrman  
Architect In Charge  
License: AR0017303

**Design Forum Engineering**  
2506 Byers Rd  
Miamisburg, OH 45342  
Tel: (844) 804-7700  
Timothy L. Hadering, PE  
Professional Engineer  
License: 62078

PROJECT NAME:  
**HARDEN & POLK**

PROJECT ADDRESS:  
1310 LAKESIDE VILLAGE CIR  
LAKELAND, FL 33803

STORE #: 2965  
PROJECT #: 21120-060  
ISSUE DATE: 08/17/20  
DESIGNER: RAI MONTERO  
PRODUCTION DESIGNER: ANDY MCLLOUD  
CHECKED BY: RAI MONTERO

Revision Schedule			
Rev	Date	By	Description

SHEET TITLE:  
**INTERIOR DETAILS**

SCALE: AS SHOWN

SHEET NUMBER:  
**I-508**