



**STARBUCKS**  
2401 UTAH AVENUE SOUTH  
SEATTLE, WASHINGTON 98134  
(206) 318-1575

THESE DRAWINGS AND THE PROJECT MANUAL ARE CONFIDENTIAL AND SHALL REMAIN THE SOLE PROPERTY OF STARBUCKS CORPORATION, WHICH IS THE OWNER OF THE COPYRIGHT IN THIS WORK. THEY SHALL NOT BE REPRODUCED IN WHOLE OR IN PART, SHARED WITH THIRD PARTIES OR USED IN ANY MANNER ON OTHER PROJECTS OR EXTENSIONS TO THIS PROJECT WITHOUT THE PRIOR WRITTEN CONSENT OF STARBUCKS CORPORATION. THESE DRAWINGS AND SPECIFICATIONS ARE INTENDED TO EXPRESS DESIGN INTENT FOR A PROTOTYPICAL STARBUCKS STORE (WHICH IS SUBJECT TO CHANGE AT ANYTIME) AND DO NOT REFLECT ACTUAL SITE CONDITIONS. NEITHER PARTY SHALL HAVE ANY OBLIGATION OR LIABILITY TO THE OTHER EXCEPT AS STATED ABOVE UNTIL A WRITTEN AGREEMENT IS FULLY EXECUTED BY BOTH PARTIES.

STARBUCKS TEMPLATE VERSION: I2020-02-10

**Design Forum Architects Inc.**  
2505 Byers Rd  
Miami, FL 33133  
Tel: (844) 804-7700

**Design Forum Engineering**  
2505 Byers Rd  
Miami, FL 33133  
Tel: (844) 804-7700

PROJECT NAME:  
**HARDEN & POLK**

PROJECT ADDRESS:  
1310 LAKESIDE VILLAGE CIR  
LAKELAND, FL 33803

STORE #: 2965  
PROJECT #: 21120-060  
ISSUE DATE: 08/17/20  
DESIGNER: RAI MONTERO  
PRODUCTION DESIGNER: ANDY MCLOUD  
CHECKED BY: RAI MONTERO

Revision Schedule			
Rev	Date	By	Description

SHEET TITLE:  
**FLOOR FINISH PLAN**

SCALE: 1/4" = 1'-0"

SHEET NUMBER:

I-106

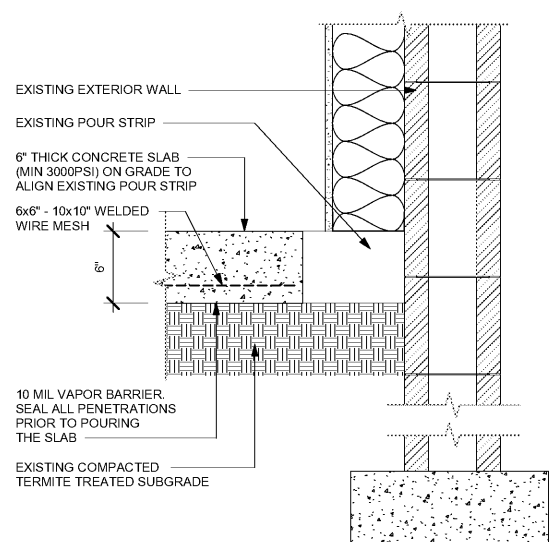
**FINISHING PROCESS FOR CONCRETE SLAB**

- INTEGRAL GRINDING WILL BEGIN AT A MINIMUM OF 36 HYBRID BOND DIAMOND GRIT. AFTER A UNIFORM SCRATCH PATTERN HAS BEEN DEVELOPED IN THE SURFACE OF THE CONCRETE, BEGIN GRINDING THE FLOOR UP TO A DIAMOND GRIT ACCEPTABLE FOR DENSIFYING. LEVEL OF FINISH TO BE [OPEN AGGREGATE, SALT & PEPPER, LIGHT SAND]. GC TO HAND GRIND OR USE A STAND-UP EDGER FOR GRINDING/POLISHING EDGE AND INSIDE CORNER CONDITIONS.
- CLEAN FLOOR WITH VEXCON CERTI-SHINE CLEAR DENSIFIER APPLIED IN MULTIPLE COATS.
- AFTER THE DENSIFIER HAS CURED, RINSE THE FLOOR WITH VEXCON CERTI-SHINE FIXATIVE, REMOVING UN-REACTED SILICATES FROM THE SURFACE OF THE CONCRETE AND IMPROVING THE CHEMICAL AND STAIN RESISTANCE OF THE POLISHED CONCRETE SYSTEM.
- ONCE THE RINSE HAS BEEN COMPLETED CONTINUE POLISHING THE FLOOR UP TO A 400 GRIT POLISH.
- CLEAN FLOOR AGAIN AND APPLY A VEXCON CERTISHINE FINISH COAT ULTRA WB IN MULTIPLE COATS. ALLOWING FOR OPTIMAL PENETRATION.
- AFTER THE STAIN PROTECTANT HAS CURED, BURNISH THE FLOOR WITH A HIGH SPEED BUFFER.

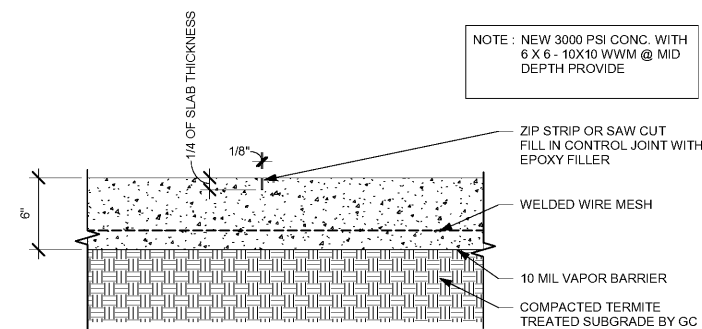
WALL BASE SCHEDULE - "B"					
DESIGN ID	LENGTH	DESCRIPTION	FURN. BY	INST. BY	COMMENTS
BASE TRIM					
X9101	35' - 1"	FLOOR FRAME 16 GA 2B SS AROUND CUSTOM WALK-OFF MAT	GC	GC	SOURCED FROM VD; SEE DETAIL: I/I-501
TILE BASE					
11403	236' - 2"	TILE BASE - BLOCK - 6X24IN 150X600MM	SB	GC	
19795	213' - 8 1/2"	POLYVINYL SHEET - TILE BASE - ECO-GRIP - PEWTER - 6X96IN 150X2438MM	GC	GC	

FLOOR TREATMENT SCHEDULE - "T"					
DESIGN ID	AREA	DESCRIPTION	FURN. BY	INST. BY	COMMENTS
CONCRETE					
17859	1431 SF	CONCRETE - DARK GREY STAIN	GC	GC	LOCALLY SOURCED
TILE					
19795	819 SF	POLYVINYL FLOOR SHEET - ECO-GRIP - PEWTER - 60X96IN 1524X2438MM	GC	GC	
WALK OFF MAT					
19288	9 SF	WALK OFF MAT - HELIX Z1 - BLACK - 12X9IN 305X230MM	SB	GC	
19289	15 SF	WALK OFF MAT - HELIX Z2 - BLACK AND GUNMETAL - 12X9IN 305X230MM	SB	GC	CANNOT BE CUT TO SIZE; USE HELIX Z1 AS BORDER WHEN FULL TILES CANNOT BE PLACED

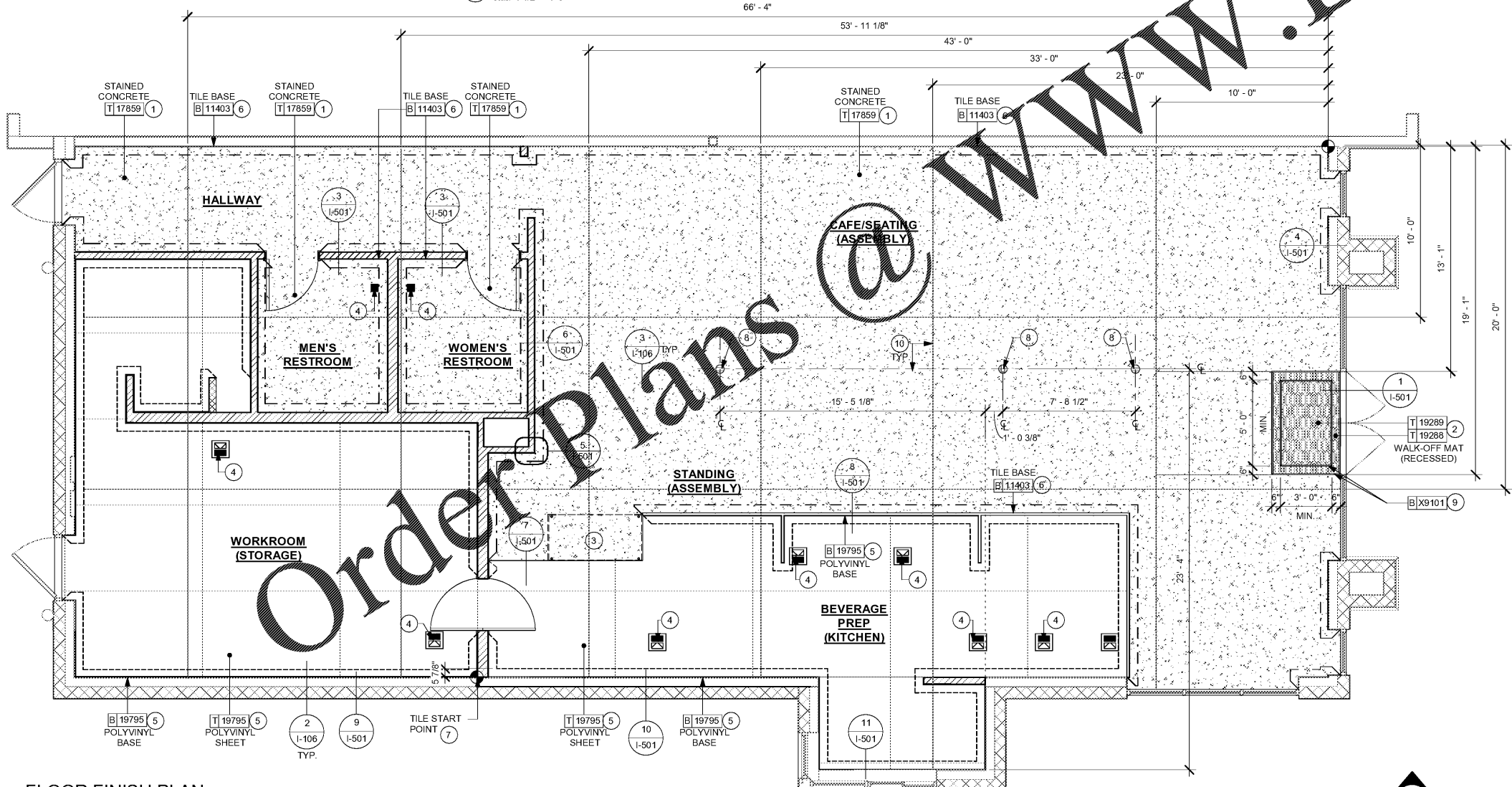
NOTE: NEW 3000 PSI CONC. WITH 6 X 6 - 10X10 WWM @ MID DEPTH PROVIDE



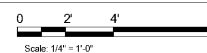
**2 SLAB DETAIL**  
Scale: 1 1/2" = 1'-0"



**3 CONCRETE SLAB CONTROL JOINT**  
Scale: 1 1/2" = 1'-0"



**1 FLOOR FINISH PLAN**  
Scale: 1/4" = 1'-0"



**GENERAL NOTES**

- FLOORS, WALLS AND CEILING FINISHES IN FOOD PREPARATION AREAS SHALL BE SMOOTH, NON-TOXIC, NON-ABSORBENT, DURABLE AND EASILY CLEANABLE. PAINTS SHALL BE WASHABLE; SEMI-GLOSS OR HIGH-GLOSS FINISH.
- STARBUCKS TO SUPPLY RETAIL FLOOR TILES AND TILE BASE. GENERAL CONTRACTOR TO INSTALL. GENERAL CONTRACTOR TO SUPPLY WORKMATS, TILE AND BASE AND INSTALL. GENERAL CONTRACTOR TO APPLY AND INSTALL MORTAR, ADHESIVE, AND GROUT. GENERAL CONTRACTOR TO INSPECT ALL TILES AND REPORT DAMAGED OR SUBSTANDARD TILES PRIOR TO INSTALLATION.
- LIGHT WEE TRANSITIONS ON WHOLE TILES AS SHOWN.
- FLOOR AND WALL JUNCTIONS IN STORAGE AND FOOD PREPARATION AREAS SHALL HAVE A 6" COVED BASE.

- KEYED NOTES**
- INSTALL STAINED CONCRETE FLOORING AT CAFE, RESTROOMS AND HALLWAY AS INDICATED.
  - INSTALL HELIX Z1 (FRAME) AND HELIX Z2 (FULL) WALK-OFF MAT AT MAIN ENTRY AS INDICATED. CUT OUT CONCRETE AS REQUIRED PER MANUFACTURER'S SPECIFICATIONS.
  - PASTRY CASE FOOTPRINT.
  - FLOOR SINK/ DRAIN LOCATION. SEE BUILDING FLOOR PENETRATION PLAN ON SHEET A-102 AND PLUMBING FOR ADDITIONAL INFORMATION.
  - INSTALL POLYVINYL FLOORING AND TILE BASE AT BACKBAR AND WORKROOM AS INDICATED.
  - INSTALL TILE BASE AT CAFE, RESTROOMS AND HALLWAY AS INDICATED.
  - TILE START POINT WHERE INDICATED.
  - DUPLEX FLOOR OUTLET. COORDINATE FLOOR RECEPTACLE LOCATION WITH TABLE LEG.
  - INSTALL CUSTOM METAL ALUMINIUM TRIM AROUND WALK-OFF MAT.
  - CONTROL JOINT IN CONCRETE SLAB BY GC.

**LEGEND**

	STAINED CONCRETE	T 17859
	POLYVINYL SHEET FLOORING - ECO-GRIP - PEWTER - 60X96IN 1524X2438MM	T 19795
	WALK OFF MAT - HELIX Z1 (FRAME) AND Z2 (MAIN) - BLACK - 12X9IN 305X230MM	T 19288 T 19289
	TILE BASE - BLOCK - BLACK - 6X24IN 150X600MM	B 20218
	POLYVINYL SHEET - TILE BASE - ECOGRIP - PEWTER - 6X96IN 150X2438MM	B 19795
	CONTROL JOINT	
	DATUM POINT	

**RESPONSIBILITY LEGEND**

FURN. BY	INST. BY
SB - FURNISHED BY STARBUCKS	GC - INSTALLED BY GENERAL CONTRACTOR
GC - INSTALLED BY GENERAL CONTRACTOR	SB - INSTALLED BY STARBUCKS
	VD - INSTALLED BY VENDOR

**NOTE:** ALL RESPONSIBILITIES TO BE CONFIRMED WITH STARBUCKS CONSTRUCTION MANAGER PRIOR TO ORDERING / CONSTRUCTION.

C:\Users\julia.gray\Documents\21120-060\_2965\_Harden & Polk\_julia.gray.rvt 8/13/2020 4:19:04 PM