



© 2019 STARBUCKS COFFEE COMPANY

STARBUCKS®
2401 UTAH AVENUE SOUTH
SEATTLE, WASHINGTON 98134
(206) 318-1575

THESE DRAWINGS AND THE PROJECT MANUAL ARE CONFIDENTIAL AND SHALL REMAIN THE SOLE PROPERTY OF STARBUCKS CORPORATION, WHICH IS THE OWNER OF THE COPYRIGHT IN THIS WORK. THEY SHALL NOT BE REPRODUCED IN WHOLE OR IN PART, SHARED WITH THIRD PARTIES OR USED IN ANY MANNER ON OTHER PROJECTS OR EXTENSIONS TO THIS PROJECT WITHOUT THE PRIOR WRITTEN CONSENT OF STARBUCKS CORPORATION. THESE DRAWINGS AND SPECIFICATIONS ARE INTENDED TO EXPRESS DESIGN INTENT FOR A PROTOTYPICAL STARBUCKS STORE (WHICH IS SUBJECT TO CHANGE AT ANY TIME) AND DO NOT REFLECT ACTUAL SITE CONDITIONS. NEITHER PARTY SHALL HAVE ANY OBLIGATION OR LIABILITY TO THE OTHER (EXCEPT AS STATED ABOVE) UNTIL A WRITTEN AGREEMENT IS FULLY EXECUTED BY BOTH PARTIES.

STARBUCKS TEMPLATE VERSION: I2020-02-10

Design Forum Architects Inc.
2506 Byers Rd
Miamisburg, OH 45342
Tel: (844) 804-7700
Donald J. Rehrman
Architect in Charge
License: AR0017303

Design Forum Engineering
2506 Byers Rd
Miamisburg, OH 45342
Tel: (844) 804-7700
Timothy L. Raderding, PE
Professional Engineer
License: 62078

PROJECT NAME:
HARDEN & POLK

PROJECT ADDRESS:
1310 LAKESIDE VILLAGE CIR
LAKELAND, FL 33803

STORE #: 2965
PROJECT #: 21120-060
ISSUE DATE: 08/17/20
DESIGNER: RAI MONTERO
PRODUCTION DESIGNER: ANDY MCLOUD
CHECKED BY: RAI MONTERO

Revision Schedule			
Rev	Date	By	Description

SHEET TITLE:
REFLECTED CEILING PLAN

SCALE: AS SHOWN

SHEET NUMBER:

A-104

CEILING TREATMENT SCHEDULE - "U"					
DESIGN ID	AREA	DESCRIPTION	FURN. BY	INST. BY	COMMENTS
OTHER					
11302	348 SF	ACT - WHITE - 2X4FT 61X122CM	GC	GC	VINYL CLAD ACT AT BOH
X9301	645 SF	CIRRUS SECOND LOOK ACT CEILING - 2X4FT 61X122CM LINEAR PANELS (III PANEL SCORING CREATES NOMINAL 61X4FT)	GC	GC	PROVIDED BY: ARMSTRONG; FACTORY FINISHED BY MANUFACTURER TO MATCH SW7045-INTELLECTUAL GRAY

INTERIOR SIGNAGE SCHEDULE - "S"					
DESIGN ID	COUNT	DESCRIPTION	FURN. BY	INST. BY	COMMENTS
INTERIOR SIGNAGE					
21163	1	BLADE MOUNT MOP SIGNAGE - ILLUMINATED - CEILING MOUNTED	SB	GC	SEE DETAIL: 6/1-509; ACRYLIC SLEEVE WITH PRINTED BLACK TEXT ON WHITE FROSTED TRANSLUCENT INSERT AND BLACK MOUNTING BRACKET VENDOR: WALTON SIGNAGE CONTACT: MOP@WALTONSIGNAGE.COM
X0002	1	MOP SIGNAGE EXTENSION ROD	SB	GC	SEE DETAIL: 6/1-509; VENDOR: WALTON SIGNAGE CONTACT: MOP@WALTONSIGNAGE.COM

PAINT SCHEDULE					
COLOR CODE	DESCRIPTION	LRV	FURN. BY	INST. BY	COMMENTS
SW7019-ES	SW - GAUNTLET GRAY - EGGSHELL	17	GC	GC	USE PRIMER CP-1
SW7019-SG	SW - GAUNTLET GRAY - SEMIGLOSS	17	GC	GC	USE PRIMER CP-1
SW7045-ES	SW - INTELLECTUAL GRAY - EGGSHELL	36	GC	GC	USE PRIMER CP-1
SW7045-SG	SW - INTELLECTUAL GRAY - SEMIGLOSS	36	GC	GC	USE PRIMER CP-1
SW7049-ES	SW - NUANCE - EGGSHELL	74	GC	GC	USE PRIMER CP-1

LIGHTING LEGEND

- 2" RECESSED CAN (ADJUSTABLE) BLACK 1000 LM - SPOT LIGHT [L 19115] [L 19023]
- 2" RECESSED CAN (ADJUSTABLE) BLACK 1000 LM - FLOOD LIGHT [L 19117] [L 19023]
- TRACK HEAD: BLACK 900 LM - FLOOD LIGHT [L 19083]

LEGEND

- DATUM
- TRACK LIGHTING
- STRIP LIGHTING
- RECESSED CAN LIGHT
- TROFFER
- TRIM SCONCE
- EXIT SECURITY LIGHT
- SPEAKER (WALL MOUNTED)
- SPEAKER (RECESSED - CEILING MOUNTED)
- PICTURE LIGHT

GENERAL NOTES

- IF REQUIRED BY LOCAL CODE, GENERAL CONTRACTOR TO PROVIDE SEMI-RECESSED SPRINKLER HEADS WITH POLISHED CHROME ESCUTCHEONS CENTERED IN ACOUSTICAL CEILING TILE. IF PENETRATIONS ARE REQUIRED IN GWB SOFFIT OVER FRUIT BAR, CONCEAL SUPPLY PIPING WITHIN SOFFIT.
- LEAVE TEN (10) ADDITIONAL RETAIL CEILING TILES TO MATCH RETAIL CEILING PAINT COLOR ABOVE THE WORKROOM CEILING MANAGER'S DESK FOR FUTURE PROVIDE GROMMET AT ACOUSTIC CEILING PENETRATIONS FOR FIXTURES OF SUPPORTS.
- HEATING, VENTILATING AND AIR CONDITIONING SHOWN ON THIS PLAN PROVIDED FOR REFERENCE ONLY. SEE MECHANICAL DRAWINGS FOR ADDITIONAL INFORMATION.
- DIFFUSERS AND RETURNS IN ACOUSTICAL CEILING TILE TO BE CENTERED IN TILE AND PAINTED TO MATCH ADJACENT FINISHES (TYP.).
- PAINT ALL EXPOSED HVAC DUCTS, HVAC DIFFUSERS, LIGHT TRIM RINGS, PIPING, CONDUIT AND JUNCTION BOXES THE SAME COLOR AS SPECIFIED ON SURROUNDING CEILING OR SOFFIT UNLESS OTHERWISE NOTED. TYPICAL THROUGHOUT RETAIL AREA OF STORE.
- PAINT SUBSTITUTIONS ARE NOT ALLOWED. USE STARBUCKS' NATIONAL ACCOUNT "COLOR CODE" WHEN ORDERING PAINTS.

KEYED NOTES

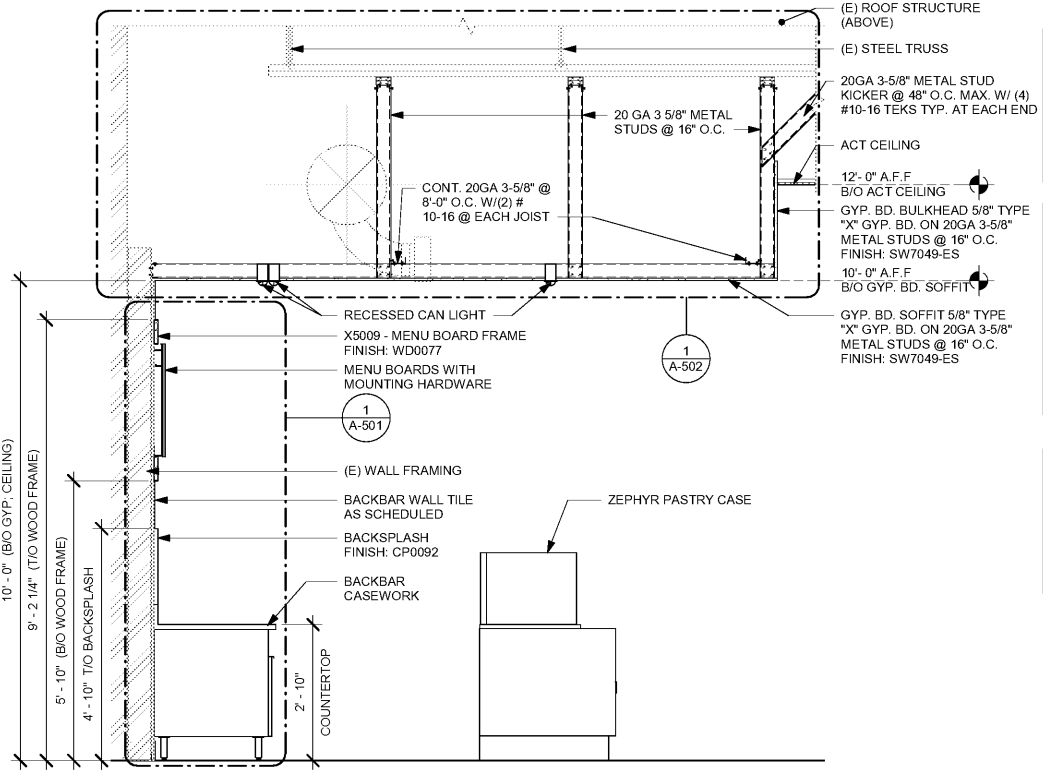
- INSTALL 2' X 4' WASHABLE CEILING TILE LOCATED IN WORKROOM AS INDICATED.
- GYP. CEILING / SOFFIT WITH SMOOTH FINISH (PAINT AS SCHEDULED).
- INSTALL 2' X 4' CIRRUS SECOND LOOK ACT LOCATED IN CAFE AS INDICATED (PAINT AS SCHEDULED).
- PAINT RECESSED LIGHTING TRIM TO MATCH CEILING AS CLOSELY AS POSSIBLE.
- LINE OF SOFFIT / HEADER.
- ALIGN FINISHED SURFACES.
- LOCATIONS OF ALL EGRESS LIGHTING FOR REFERENCE ONLY. GC TO VERIFY WITH LOCAL FIRE MARSHAL PRIOR TO INSTALLATION.
- REFER TO INTERIOR FINISH ELEVATIONS FOR MENU BOARD SPACING.
- REFER TO SHEET A-105 FOR LIGHTING LOCATIONS AND INFORMATION.
- GC TO COORDINATE SECURITY CAMERA QUANTITIES AND LOCATIONS WITH STARBUCKS CONSTRUCTION MANAGER.
- INSTALL EXTERIOR SPEAKER AT 10'-6" (320MM) A.F.F. MIN.
- INSTALL RECESSED SPEAKERS AS INDICATED. CENTER ON ACT WHERE APPLICABLE.
- PLATFORM FOR HEATER AND WATER FILTRATION. PROVIDE SOFFIT AND LIFT CEILING THIS AREA ONLY TO ENSURE ADEQUATE CLEARANCE FOR SERVICING.
- LINE OF PASTRY CASE BELOW.
- INSTALL CEILING MOUNTED MOP SIGNAGE AS INDICATED.
- LOCATION OF ALL SWITCHING.
- INSTALL ROLLER SHADES AS INDICATED.
- EXISTING AWNING / CANOPY.
- EXISTING EXTERIOR WALL SCONCE.
- EXTERIOR BUILDING SIGNAGE. SEE BUILDING EXTERIOR ELEVATIONS FOR ADDITIONAL INFORMATION.

NOTE: REFER TO SHEET I-101.1 FOR FURNITURE AND DATA DEVICE SCHEDULES.

RESPONSIBILITY LEGEND

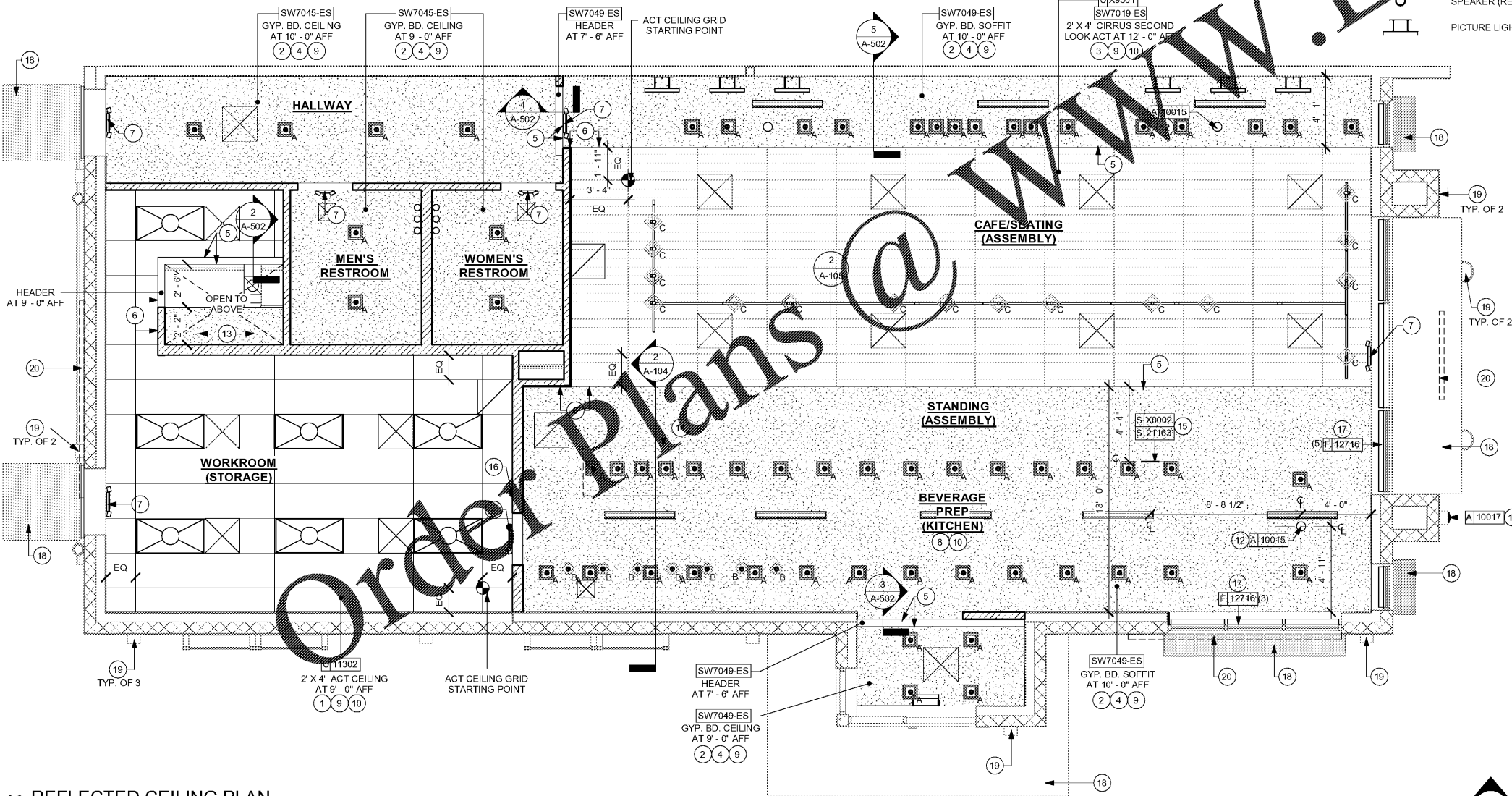
FURN. BY	INST. BY
SB - FURNISHED BY STARBUCKS	GC - INSTALLED BY GENERAL CONTRACTOR
GC - INSTALLED BY GENERAL CONTRACTOR	SB - INSTALLED BY STARBUCKS
	VD - INSTALLED BY VENDOR

NOTE: ALL RESPONSIBILITIES TO BE CONFIRMED WITH STARBUCKS CONSTRUCTION MANAGER PRIOR TO ORDERING / CONSTRUCTION.



2 BACKBAR SECTION

Scale: 1/2" = 1'-0"



1 REFLECTED CEILING PLAN

Scale: 1/4" = 1'-0"



C:\Users\julia.gray\Documents\21120-060_2965_Harden & Polk_julia.gray.rvt
8/13/2020 4:14:39 PM