

AREA COLOR LEGEND

- ASSEMBLY - STANDING
- ASSEMBLY - UNCONCENTRATED
- BEVERAGE PREP.
- WORKROOM - STORAGE
- EGRESS / UNOCCUPIABLE

AREA - OCCUPANT LOAD CALCS			
NAME	AREA	LOAD FACTOR	OCCUPANT LOAD
ASSEMBLY UNCONCENTRATED	708 SF	15	48
BEVERAGE PREP (KITCHEN)	432 SF	100	5
RR/ UNOCCUPIABLE AREA	823 SF		0
STANDING (ASSEMBLY)	94 SF	7	13
WORKROOM (STORAGE)	443 SF	300	2
GRAND TOTAL	2500 SF		68



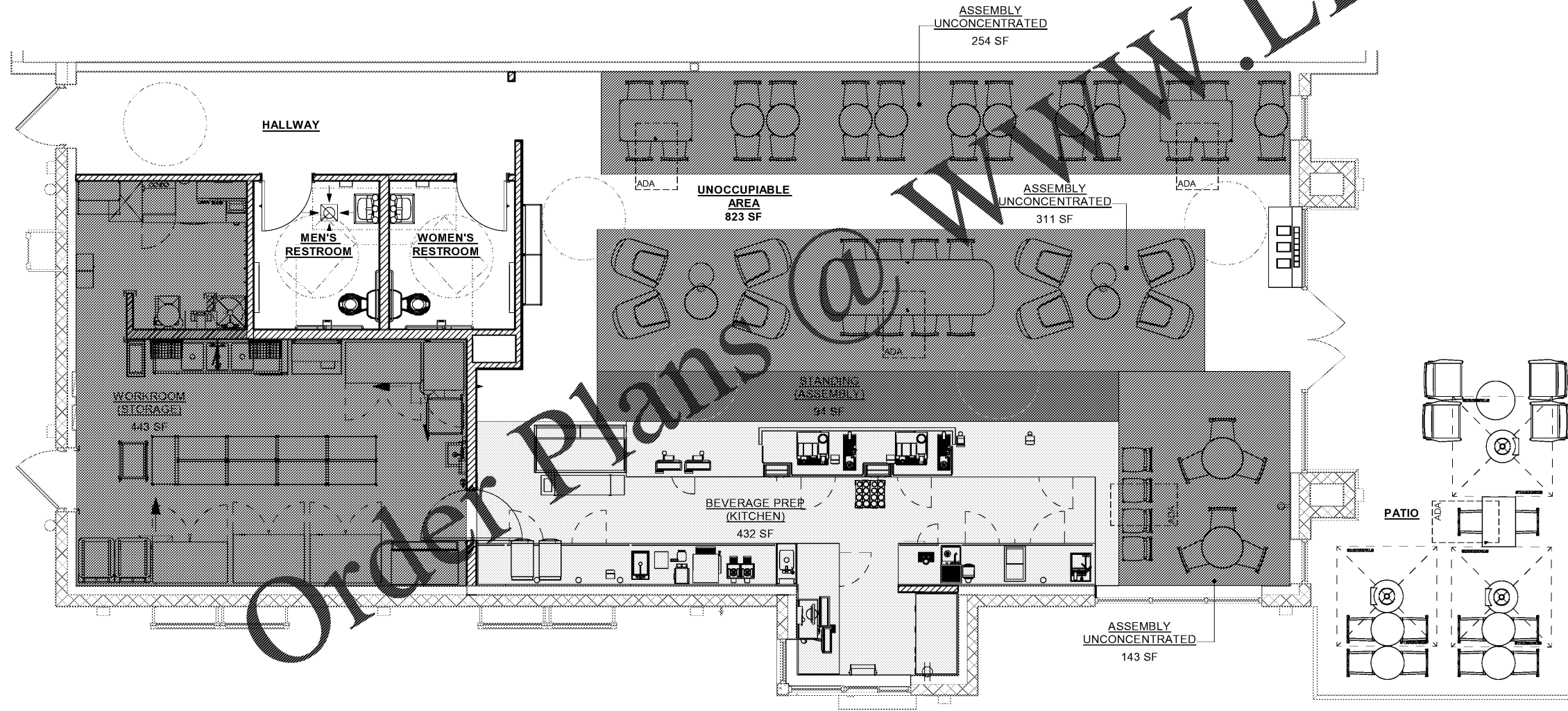
**STARBUCKS®**  
 2401 UTAH AVENUE SOUTH  
 SEATTLE, WASHINGTON 98134  
 (206) 318-1575

THESE DRAWINGS AND THE PROJECT MANUAL ARE CONFIDENTIAL AND SHALL REMAIN THE SOLE PROPERTY OF STARBUCKS CORPORATION, WHICH IS THE OWNER OF THE COPYRIGHT IN THIS WORK. THEY SHALL NOT BE REPRODUCED IN WHOLE OR IN PART, SHARED WITH THIRD PARTIES OR USED IN ANY MANNER ON OTHER PROJECTS OR EXTENSIONS TO THIS PROJECT WITHOUT THE PRIOR WRITTEN CONSENT OF STARBUCKS CORPORATION. THESE DRAWINGS AND SPECIFICATIONS ARE INTENDED TO EXPRESS DESIGN INTENT FOR A PROTOTYPICAL STARBUCKS STORE (WHICH IS SUBJECT TO CHANGE AT ANYTIME) AND DO NOT REFLECT ACTUAL SITE CONDITIONS. NEITHER PARTY SHALL HAVE ANY OBLIGATION OR LIABILITY TO THE OTHER (EXCEPT AS STATED ABOVE) UNTIL A WRITTEN AGREEMENT IS FULLY EXECUTED BY BOTH PARTIES.

STARBUCKS TEMPLATE VERSION: 12020-02-10

**Design Forum Architects Inc.**  
 2506 Byers Rd  
 Mansfield, OH 43342  
 Tel: (614) 804-7700  
 Donald J. Reihman  
 Architect In Charge  
 License: AR0017303

**Design Forum Engineering**  
 2506 Byers Rd  
 Mansfield, OH 43342  
 Tel: (614) 804-7700  
 Timothy L. Riberding, PE  
 Professional Engineer  
 License: 62078



Order Plans @ WWW.LDILine.com

PROJECT NAME:  
**HARDEN & POLK**  
 PROJECT ADDRESS:  
 1310 LAKESIDE VILLAGE CIR  
 LAKELAND, FL 33803

STORE #: 2965  
 PROJECT #: 21120-060  
 ISSUE DATE: 08/17/20  
 DESIGNER: RAI MONTERO  
 PRODUCTION DESIGNER: ANDY MCLLOUD  
 CHECKED BY: RAI MONTERO

Revision Schedule			
Rev	Date	By	Description

SHEET TITLE:  
**OCCUPANCY LOAD PLAN**  
 SCALE: 1/4" = 1'-0"

SHEET NUMBER:  
**G-002.1**

**1 OCCUPANCY LOAD PLAN**  
 Scale: 1/4" = 1'-0"

