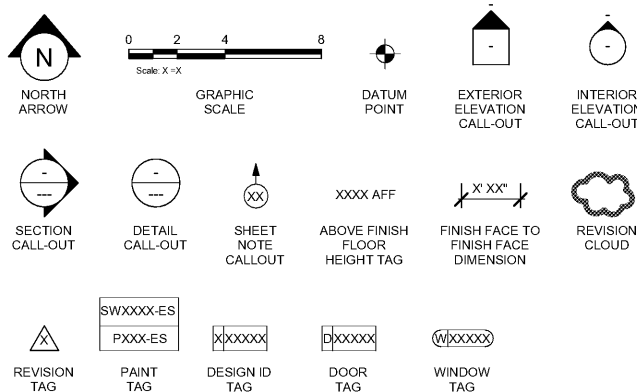


GENERAL NOTES

- THE DRAWINGS AND PROJECT MANUAL TOGETHER CONSTITUTE THE CONTRACT DOCUMENTS FOR CONSTRUCTION. ALL GENERAL REQUIREMENTS ARE TO BE MET AND ALL MATERIALS, FINISHES AND SYSTEMS ARE TO BE INSTALLED AND PERFORM PER SPECIFICATIONS UNLESS OTHERWISE NOTED.
- GENERAL CONTRACTOR SHALL VISIT THE SITE, REVIEW THE BUILDING SHELL DRAWINGS AS SUBMITTED BY THE LANDLORD OR STARBUCKS AND BECOME THOROUGHLY FAMILIAR WITH THE SITE CONDITIONS PRIOR TO CONSTRUCTION.
- GENERAL CONTRACTOR SHALL CONSULT WITH STARBUCKS CONSTRUCTION MANAGER TO RESOLVE ANY CHANGES, OMISSIONS OR PLAN DISCREPANCIES PRIOR TO CONSTRUCTION.
- ALL WORK SHALL BE PERFORMED IN STRICT COMPLIANCE WITH LOCAL, COUNTY, STATE AND FEDERAL CODES AND ORDINANCES.
- GENERAL CONTRACTOR SHALL VERIFY THE LOCATION OF ALL UTILITIES.
- GENERAL CONTRACTOR TO VERIFY ALL DIMENSIONS, INCLUDING CLEARANCES REQUIRED BY OTHER TRADES AND NOTIFY STARBUCKS CONSTRUCTION MANAGER OF ANY DISCREPANCIES PRIOR TO PROCEEDING WITH THE WORK. ALL DIMENSIONS ARE TO THE FACE OF THE FINISHED SURFACE UNLESS NOTED OTHERWISE. ALL DIMENSIONS TO BE TAKEN FROM DESIGNATED DATUM POINT. DO NOT SCALE DRAWINGS.
- GENERAL CONTRACTOR SHALL PATCH AND REPAIR ALL EXISTING WALLS, FLOORS, CEILINGS OR OTHER SURFACES IDENTIFIED TO REMAIN THAT MAY BECOME DAMAGED DURING THE COURSE OF THE WORK.
- THE GENERAL CONTRACTOR IS RESPONSIBLE FOR OBTAINING PERMITS FOR FIRE PROTECTION, PLUMBING, MECHANICAL AND ELECTRICAL SYSTEMS PRIOR TO INSTALLATION OF SUCH SYSTEMS.
- GENERAL CONTRACTOR SHALL RETAIN ONE SET OF PERMIT PLANS ON-SITE TO DOCUMENT ALL CHANGES MADE DURING CONSTRUCTION. THE RECORD DRAWINGS SHALL BE ISSUED TO THE OWNER AT PROJECT CLOSE-OUT AS DESCRIBED IN THE GENERAL REQUIREMENTS OF THE PROJECT MANUAL.
- GENERAL CONTRACTOR IS RESPONSIBLE FOR COORDINATING DELIVERY OF MATERIALS FROM STARBUCKS CONTRACTED THIRD PARTY LOGISTICS DISTRIBUTION SERVICES AND VENDOR DIRECT SHIPMENTS. SEE THE PROJECT MANUAL FOR ADDITIONAL INFORMATION.
- RESPONSIBILITY FOR SUPPLY AND DELIVERY OF MATERIALS AND EQUIPMENT IS IDENTIFIED IN THE DRAWING SCHEDULE SHEETS UNDER THE COLUMN LABELED "RESPONSIBILITY".
- FOR THE PURPOSE OF THE DOCUMENTS, TO "INSTALL" SHALL MEAN TO PROVIDE ALL FASTENERS, MISCELLANEOUS HARDWARE, BLOCKING, ELECTRICAL CONNECTIONS, PLUMBING CONNECTIONS AND OTHER ITEMS REQUIRED FOR A COMPLETE AND OPERATIONAL INSTALLATION, UNLESS NOTED OTHERWISE.
- ALL ITEM SUBSTITUTIONS MUST BE APPROVED BY THE STARBUCKS CONSTRUCTION MANAGER.

ARCHITECTURAL SYMBOL LEGEND



ABBREVIATIONS

A/C AIR CONDITIONING	FF&E FURNITURE, FIXTURE AND EQUIPMENT	OC OIL CENTER
ACT ACOUSTICAL CEILING TILE	FLR FLOOR	OD OUTSIDE DIAMETER
ADJ ADJUSTABLE	FOH FRONT OF HOUSE	PIR PASSIVE INFRARED SENSOR
AFF ABOVE FINISHED FLOOR	FT FOOT/FEET	PLC PLACE
AMP AMPERE	G GROUND	R RADIUS
ARCH ARCHITECT	GC GENERAL CONTRACTOR	REF REFERENCE
BOH BACK OF HOUSE	HC FOLLOW CORE	REQ'D REQUIRED
CAB CABINET	HD HARDWARE	REV REVISION
CL CENTER LINE	HM FOLLOW METAL	RND ROUND
CLG CEILING	HORIZ HORIZONTAL	SB STARBUCKS
CM STARBUCKS CONSTRUCTION MANAGER	HR HEIGHT	SC SOLID CORE
CTR CENTER	HT HEIGHT	SF SQUARE FEET
CX COMMISSIONING	HVAC HEATING, VENTILATING AND AIR CONDITIONING	SHT SHEET
CXA COMMISSIONING AGENT	I.D. INSIDE DIAMETER	SIM SIMILAR
DEG DEGREE	LEED LEADERSHIP IN ENERGY AND ENVIRONMENTAL DESIGN	SPEC SPECIFICATION
DET DETAIL	LL LANDLORD	SQ SQUARE
DIA DIAMETER	MAX MAXIMUM	TEMP TEMPORARY
DIM DIMENSION	MEP MECHANICAL, ELECTRICAL AND PLUMBING	TYP TYPICAL
DM STARBUCKS DESIGN MANAGER	MFR MANUFACTURER	UNO UNLESS NOTED OTHERWISE
DN DOWN	MIN MINIMUM	VERT VERTICAL
EA EACH	NIC NOT IN CONTRACT	VIF VERIFY IN FIELD
EL ELEVATION	NL NIGHT LIGHT	
EQ EQUAL	NT NOT TO SCALE	
EXIST EXISTING		
EXT EXTERIOR		

PROJECT CONTACTS

SENIOR DESIGN MANAGER:	LUCAS ALVAREZ TABIO 95 MERRICK WAY, SUITE 650 CORAL GABLES, FL 33134 (786) 769-7966 LALVAREZ@STARBUCKS.COM
DESIGNER:	RAI MONTERO 95 MERRICK WAY, SUITE 650 CORAL GABLES, FL 33134 RMONTERO@STARBUCKS.COM
CONSTRUCTION MANAGER:	LYLE KRUMLAUF 95 MERRICK WAY, SUITE 650 CORAL GABLES, FL 33134 (407) 607-8685 OFFICE LKRUMLAU@STARBUCKS.COM
PROJECT MANAGER:	ANDY MCLOUD CHANGE UP INC. 2056 BYERS RD. MIAMISBURG, OH 45342 (937) 230-6676 ANDY.MCLOUD@CHANGEUPINC.COM
ARCHITECT OF RECORD:	DONALD RETHMAN DESIGN FORUM ARCHITECTS, INC 2056 BYERS RD MIAMISBURG, OH 45342 (937) 853-8247 DON.RETHMAN@CHANGEUPINC.COM
MEP CONSULTANT OF RECORD:	TIM RABERDING DESIGN FORUM ENGINEERING, INC 2056 BYERS RD MIAMISBURG, OH 45342 (937) 815-1259 TIM.RABERDING@CHANGEUPINC.COM

INDEX OF SHEETS

LEGEND: X - SHEET ISSUED
R - SHEET ISSUED FOR REFERENCE AND COORDINATION ONLY
SEE TITLEBLOCK FOR REVISION ISSUE DATE(S)

SHEET	SHEET TITLE	BID SET	PERMIT SET	REVISION 1	REVISION 2	REVISION 3	REVISION 4
-------	-------------	---------	------------	------------	------------	------------	------------

GENERAL

G-001	GENERAL INFORMATION						
G-002	LIFE SAFETY ACCESSIBILITY PLAN						
G-002.1	OCCUPANCY LOAD PLAN						
G-003	ACCESSIBILITY GUIDELINES						
G-004	FOOD SERVICE PLAN						
G-005	LEED INFORMATION						
G-006	SUSTAINABILITY REQUIREMENTS						
G-007	PRE-APPROVED CONST. MATERIALS						
G-008	PRE-APPROVED CONST. MATERIALS						

ARCHITECTURAL

A-101	BUILDING FLOOR PLAN						
A-102	BUILDING FLOOR PENETRATION PLAN						
A-104	REFLECTED CEILING PLAN						
A-105	DIMENSIONED CEILING AND LIGHTING PLAN						
A-501	BUILDING DETAILS						
A-502	BUILDING DETAILS						
A-503	WORKROOM DETAILS						
A-504	RESTROOM AND WORKROOM DETAILS						
A-601	WINDOW AND DOOR SCHEDULES						

INTERIORS

I-101	FF & E PLAN						
I-101.1	FF & E SCHEDULES						
I-102	CASEWORK PLAN						
I-103	CASEWORK SCHEDULES						
I-106	FLOOR FINISH PLAN						
I-107	WALL FINISH PLAN						
I-201	INTERIOR FINISH ELEVATIONS						
I-202	INTERIOR FINISH ELEVATIONS						
I-203	INTERIOR FINISH ELEVATIONS						
I-204	INTERIOR FINISH ELEVATIONS						
I-205	PERSPECTIVE						
I-206	RENDERED VIEWS						
I-401	ENLARGED RESTROOM PLAN						
I-401.1	ENLARGED RESTROOM ELEVATIONS						
I-501	FLOOR FINISH DETAILS						
I-502	WALL FINISH DETAILS						
I-503	INTERIOR DETAILS						
I-504	INTERIOR DETAILS						
I-505	INTERIOR DETAILS						
I-506	INTERIOR DETAILS						
I-507	INTERIOR DETAILS						
I-508	INTERIOR DETAILS						
I-509	INTERIOR DETAILS						
I-510	INTERIOR DETAILS						
I-601	SCHEDULES						
I-602	SCHEDULES						

PLUMBING

P-001	PLUMBING NOTES						
P-111	PLUMBING SUPPLY PLAN						
P-112	PLUMBING WASTE PLAN						
P-113	PLUMBING SCHEMATIC						
P-501	PLUMBING DETAILS						
P-601	PLUMBING SCHEDULES						

MECHANICAL

M-001	MECHANICAL NOTES						
M-101	MECHANICAL PLAN						
M-601	MECHANICAL DETAILS						

ELECTRICAL

E-001	ELECTRICAL NOTES						
E-104	ELECTRICAL SITE PLAN						
E-104.1	ELECTRICAL SITE DETAILS						
E-105	ELECTRICAL DESIGN PLAN						
E-107	LIGHTING DESIGN PLAN						
E-103	ELECTRICAL LOW VOLTAGE PLAN						
E-501	ELECTRICAL DETAILS						
E-502	ELECTRICAL DETAILS - EMS						
E-601	PANEL BOARD SCHEDULES						
EN-001	ENERGY CALCULATIONS						

LANDLORD COORDINATION APPENDIX

APX-100	SCOPE OF WORK PLAN						
APX-100.1	SCOPE OF WORK NOTES						
APX-101	ARCHITECTURAL SITE PLAN						
APX-101.1	ENLARGED SITE PLAN						
APX-102	ENLARGED EXTERIOR PLANS						
APX-103	DRIVE THRU DETAILS						
APX-103.1	DRIVE THRU DETAILS						
APX-104	ARCHITECTURAL SITE DETAILS						
APX-105	ENLARGED PATIO PLAN						
APX-201	EXTERIOR ELEVATIONS						
APX-601	COORDINATION SCHEDULES						

SITE AND OCCUPANCY

PROJECT DESCRIPTION: NEW TENANT IMPROVEMENT

BUILDING HEIGHT: 1 STORY

BUILDING AREA: 2500 SF

BUILDING USE: COFFEE SHOP

ZONING: PUD

TYPE OF USE: COFFEE SHOP

TYPE OF OCCUPANCY: A-2, ASSEMBLY

OCCUPANCY LOAD: BEVERAGE PREP (KITCHEN): 432 SF / 100 = 05
CAFE/SEATING (ASSEMBLY): 708 SF / 15 = 48
STANDING (ASSEMBLY): 94 SF / 7 = 13
WORKROOM (STORAGE): 443 SF / 300 = 02
TOTAL OCCUPANCY: = 68

TOTAL SQUARE FOOTAGE: 2500 SF

TOTAL INTERIOR SEATS: 52

EXTERIOR SEASONAL SEATING: 14

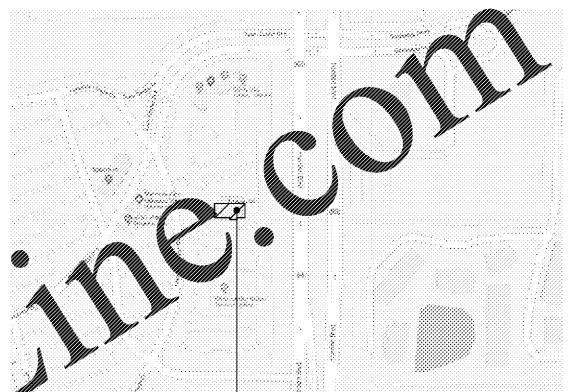
EXTERIOR SEATING AREA: 310 SF (BY LL)

EXIT CAPACITY: EXIT 1: 72" WIDE
EXIT 2: 42" WIDE
EXIT 3: 42" WIDE
TOTAL EXIT WIDTH PROVIDED: 156 IN.
0.2 X 68 OCCUPANTS = 13.6 IN. REQUIRED

TRAVEL DISTANCE: ALLOWED TRAVEL DISTANCE: 200' - 0"
ACTUAL TRAVEL DISTANCE: 89' - 5"
89' - 5" < 200' - 0" THEREFORE COMPLIES

NUMBER OF EXITS: MIN. NUMBER OF EXITS REQUIRED: 2
NUMBER OF EXITS PROVIDED: 3

VICINITY PLAN



SCOPE OF WORK

INTERIOR TENANT IMPROVEMENT OF EXISTING SHELL BUILDING. SCOPE INCLUDES, BUT IS NOT LIMITED TO: PARTITIONS, EQUIPMENT, FINISHES, MECHANICAL, PLUMBING AND ELECTRICAL.

LANDLORD SHELL PERMIT NUMBER IS BLD20-02435
SITE REFERENCE NUMBER IS SIT20-007

APPLICABLE CODES

WITH THE 2017 FLORIDA BUILDING CODES

2017 FLORIDA BUILDING CODE:	MECHANICAL
2017 FLORIDA BUILDING CODE:	PLUMBING
2017 FLORIDA BUILDING CODE:	ACCESSIBILITY
2017 FLORIDA BUILDING CODE:	FUEL GAS
2017 FLORIDA FIRE PREVENTION CODE (2015)	ELECTRICAL
NATIONAL ELECTRICAL CODE NFPA-70 (2014):	
2017 FLORIDA ENERGY CONSERVATION CODE	

CODE CLASSIFICATION

A. OCCUPANCY GROUP:	A-2, ASSEMBLY
B. CONSTRUCTION CLASSIFICATION TYPE:	II-B, NON-SPRINKLERED
C. AUTOMATIC FIRE SUPPRESSION SYSTEM INSTALLED:	NO
D. ZONING:	PUD
E. JURISDICTION/COUNTY:	CITY OF LAKELAND, FL

FIXTURE CALCULATION

MIN Number of Plumbing Fixtures:

Occupant Load: 68 Indoor Occupancy
14 Outdoor Seating
68 + 14 = 82 Occupant

Distribution: Men: 41 Women: 41

6TH ED. 2017 FLORIDA PLUMBING CODE:

	Men	Women
Water Closets	1 Per 75 Occupants	1 Per 75 Occupants
Lavatories	1 Per 200 Occupants	1 Per 200 Occupants
Urinals	0	N/A

Fixture	Men		Women	
	REQ'D	Provided	REQ'D	Provided
Water Closets	1	1	1	1
Urinals	0	0	N/A	N/A
Lavatories	1	1	1	1
Drinking Fountains	Not Required		Not Required	



STARBUCKS®
2401 UTAH AVENUE SOUTH
SEATTLE, WASHINGTON 98134
(206) 318-1575

THESE DRAWINGS AND THE PROJECT MANUAL ARE CONFIDENTIAL AND SHALL REMAIN THE SOLE PROPERTY OF STARBUCKS CORPORATION, WHICH IS THE OWNER OF THE COPYRIGHT IN THIS WORK. THEY SHALL NOT BE REPRODUCED, IN WHOLE OR IN PART, SHARED WITH THIRD PARTIES OR USED IN ANY MANNER ON OTHER PROJECTS OR EXTENSIONS TO THIS PROJECT WITHOUT THE PRIOR WRITTEN CONSENT OF STARBUCKS CORPORATION. THESE DRAWINGS AND SPECIFICATIONS ARE INTENDED TO EXPRESS DESIGN INTENT FOR A PROTOTYPED STARBUCKS STORE (WHICH IS SUBJECT TO CHANGE AT ANYTIME) AND DO NOT REFLECT ACTUAL SITE CONDITIONS. NEITHER PARTY SHALL HAVE ANY OBLIGATION OR LIABILITY TO THE OTHER (EXCEPT STATED ABOVE) UNTIL A WRITTEN AGREEMENT IS FULLY EXECUTED BY BOTH PARTIES.

STARBUCKS TEMPLATE VERSION: i2020-02-10

Design Forum Architects Inc.
2056 Byers Rd
Miamisburg, OH 45342
Tel: (844) 804-7700
Donald J. Rehrman
Architect In Charge
License: AR0017303

Design Forum Engineering
2056 Byers Rd
Miamisburg, OH 45342
Tel: (844) 804-7700
Timothy L. Raberding, PE
Professional Engineer
License: 62078

PROJECT NAME:
HARDEN & POLK

PROJECT ADDRESS:
1310 LAKESIDE VILLAGE CIR
LAKELAND, FL 33803

STORE #: 2965
PROJECT #: 21120-060
ISSUE DATE: 08/17/20
DESIGNER: RAI MONTERO
PRODUCTION DESIGNER: ANDY MCLOUD
CHECKED BY: RAI MONTERO

Revision Schedule

Rev	Date	By	Description

SHEET TITLE:
GENERAL INFORMATION

SCALE: NO SCALE

SHEET NUMBER:
G-001