

SEAL:

THIS DOCUMENT IS NOT
FOR REGULATORY
APPROVAL, PERMITTING,
OR CONSTRUCTION.

FOR BIDDING ONLY
09/03/2020

NO DATE REMARKS
REVISIONS



7-ELEVEN
STORE #41559

1245 S. VOLUSIA AVENUE
Orlando City, FL 32763

PROJECT NO: 2019.0743
DATE: APRIL 7, 2020

CWE1.0
CAR WASH POWER PLAN

CHECKED: - DRAWN: M.M

UPDATED: 7/20/2020 5:10 pm
ISSUED FOR: APPROVAL

NEW PANEL CW

LOCATION: CARWASH UTILITY ROOM
VOLTAGE: 208Y/120V
TRIM: SURFACE

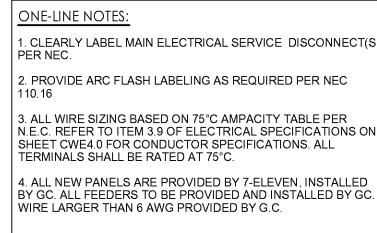
MAIN: 400A MLO
SYSTEM: 3Ø, 4W
BUS RATING: 400A

CONN. LOAD: 71.9 KVA
FEED: TOP
GROUND BUS: YES

CKT	LOAD SERVED	COND	PHASE	NEUT	GND	BKR	DMD	L1	L2	L3	DMD	BKR	COND	PHASE	NEUT	GND	LOAD SERVED	CKT
1	(6) RECLAIM PUMP & VFD	1/2"	#12	#12	#12	20/3	M	990	1660		N	20/2	1/2"	#12	#12	#12	(7) R.O. SYSTEM	2
3	"	"	"	"	"	"	"	"	"	"	"	"	"	"	"	"	"	4
5	"	"	"	"	"	"	"	"	"	"	"	"	"	"	"	"	"	6
7	(6) RECLAIM PUMP CONTROL	1/2"	#12	#12	#12	20/1	N	1320			N	20/2	1/2"	#12	#12	#12	(7) R.O. SYSTEM	8
9	(6) REJECT CAPTURE SYSTEM	1/2"	#12	#12	#12	20/2	N	1680	1680		N	25/31	1-1/4"	#1	-	#6	(4) TECH 21 DRYER	10
11	"	"	"	"	"	"	"	"	"	"	"	"	"	"	"	"	"	12
13	(9) WINDOW RINSE PUMP	1/2"	#12	#12	#12	20/3	N	530	10810		N	20/1	1/2"	#12	#12	#12	"	14
15	"	"	"	"	"	"	"	"	"	"	"	"	"	"	"	"	"	16
17	"	"	"	"	"	"	"	"	"	"	"	"	"	"	"	"	"	18
19	(L) EQUIPMENT ROOM LITS	1/2"	#12	#12	#12	20/1	L	170	2010		N	20/1	1/2"	#12	#12	#12	"	20
21	WASH BAY LITS	1/2"	#12	#12	#12	20/1	L	270	1440		N	20/1	1/2"	#12	#12	#12	(2) WASH BAY TERMINAL BOX	22
23	EXTERIOR WALL PACKS	1/2"	#12	#12	#12	20/1	L	1020	960		N	15/1	1/2"	#12	#12	#12	(3) C-STAR COIN BOX	24
25	EQUIPMENT ROOM RECEPITS	1/2"	#12	#12	#12	20/1	R	360	3840		N	45/3	3/4"	#8	#6	#6	(1) C-STAR COIN BOX	26
27	SPARE	"	"	"	"	"	"	"	"	"	"	"	"	"	"	"	"	28
29	LIGHTING CONTACTOR	1/2"	#12	#12	#12	20/1	L	3840	3840		N	20/1	1/2"	#12	#12	#12	"	30
31	SPARE	"	"	"	"	"	"	"	"	"	"	"	"	"	"	"	"	32
33	SPARE	"	"	"	"	"	"	"	"	"	"	"	"	"	"	"	"	34
35	SPARE	"	"	"	"	"	"	"	"	"	"	"	"	"	"	"	"	36
37	SPARE	"	"	"	"	"	"	"	"	"	"	"	"	"	"	"	"	38
39	SPACE	"	"	"	"	"	"	"	"	"	"	"	"	"	"	"	"	40
41	SPACE	"	"	"	"	"	"	"	"	"	"	"	"	"	"	"	"	42

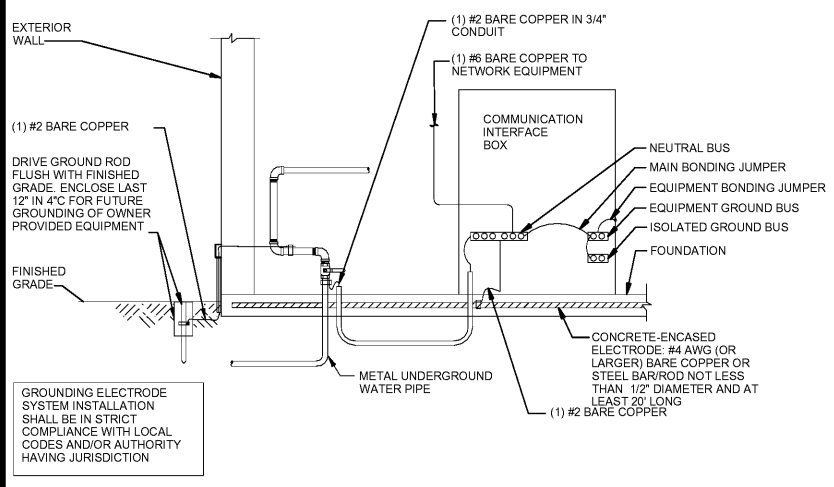
INTERRUPT RATING: SER. RATED 6550 (110) 125/40 FROM: 400A FUCED DISC. SW.

LOADS (IN VA)	CONNECTED	DEMAND FACTOR	MINIMUM FEEDER	LOADS	CONNECTED	DEMAND FACTOR	MINIMUM FEEDER	REMAINING CONTINUOUS LOADS	REMAINING NON-CONTINUOUS LOADS	MISC. DEMAND LOADS	TOTAL CONNECTED LOAD	TOTAL DEMAND LOAD	OVERALL DEMAND FACTOR
LIGHTING	3270	1.0	3275	NON-SEASONAL MOTORS	3270	1.0	3270	0	85250	0	71.9 KVA	199.7 AMPS	1.01
RECEPITS TO 10 KVA	2.0	1.0	360	LARGEST MOTOR	0	0.25	0	0	0	0	72.7 KVA	201.8 AMPS	
RECEPITS REMAINING	0	0.5	0	WATER HEATING	0	1.0	0	0	0	0			
SPACE HEATING	0	0.0	0	KITCHEN EQUIP.	0	1.0	0	0	0	0			
AIR CONDITIONING	0	1.0	0										



2 TYPICAL ONE-LINE DIAGRAM
N.T.S

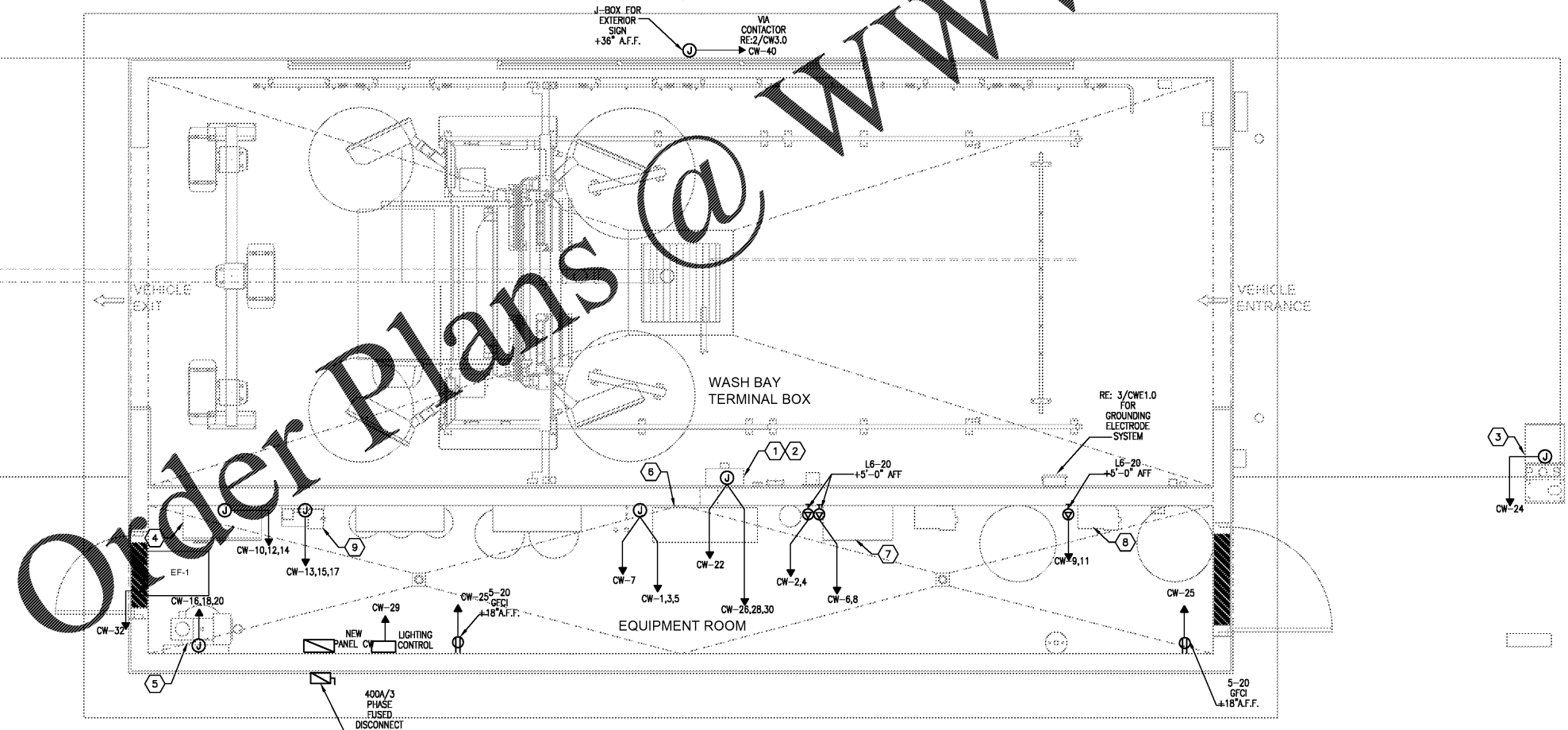
- GENERAL NOTES
1. A LOCAL ENGINEER MUST APPROVE ALL CONSTRUCTION DRAWINGS TO VERIFY THEY MEET LOCAL, STATE, AND NATIONAL CODES.
 2. ALL ELECTRICAL FITINGS TO BE WATERTIGHT. ANY FIXTURES IN VICINITY OF WASH UNIT TO BE WATERTIGHT INCLUDING LIGHTS.
 3. DRILL A 1/4" DIAMETER DRAIN HOLE IN THE BOTTOM OF ALL JUNCTION BOXES THAT ARE LOCATED IN THE WASH BAY.
 4. ALL MATERIALS TO BE PROVIDED AND INSTALLED BY CUSTOMER UNLESS OTHERWISE SPECIFIED.
 5. CONSULT YOUR LOCAL RYKO REPRESENTATIVE FOR DIMENSIONS OTHER THAN SHOWN.
 6. TERMINATE ALL PIPES WITH FEMALE PIPE THREADS UNLESS OTHERWISE NOTED.
 7. ALL DIMENSIONS TO BE CLEAR SPACE DIMENSIONS.
 8. DO NOT USE WIRE LARGER OR SMALLER THAN SPECIFIED.
 9. ALL WIRES #16 AWG AND SMALLER ARE TO BE TFFN STRANDED.
 10. ALL WIRES #14 AWG AND LARGER ARE TO BE THHN STRANDED.
 11. NO CONDUITS MAY ENTER THE TOP OF ANY ENCLOSURE.



3 GROUNDING ELECTRODE SYSTEM
N.T.S

CAR WASH EQUIPMENT SCHEDULE

REFERENCE NUMBER	ORIGIN	TERMINUS
1	ELECTRICAL SERVICE	WASH BAY TERMINAL BOX
2	ELECTRICAL SERVICE	WASH BAY TERMINAL BOX
3	ELECTRICAL SERVICE	UNITEC C-STAR COIN BOX
4	ELECTRICAL SERVICE	MACNEIL TECH 21 DRYER
5	ELECTRICAL SERVICE	5 HP AIR COMPRESSOR
6	ELECTRICAL SERVICE	PURCLEAN RECLAIM
7	ELECTRICAL SERVICE	PURCLEAN R.O. SYSTEM
8	ELECTRICAL SERVICE	PURCLEAN REJECT CAPTURE SYSTEM PUMP
9	ELECTRICAL SERVICE	PURCLEAN WINDOW RINSE DELIVERY PUMP



1 CAR WASH POWER PLAN
3/8" = 1'-0"