

SEAL:

THIS DOCUMENT IS NOT  
FOR REGULATORY  
APPROVAL, PERMITTING,  
OR CONSTRUCTION.

FOR BIDDING ONLY  
09/03/2020

NO DATE REVISIONS



7-ELEVEN  
STORE #41559

1245 S. VOLUSIA AVENUE  
Orange City, FL 32763

PROJECT NO: 2019.0743  
DATE: APRIL 7, 2020

**CWP2.2**  
CARWASH DETAILS

CHECKED: JL DRAWN: JR

Order Plans @ www.LDilme.com

EXHAUST FAN SCHEDULE								
MARK	MANUFACTURER	MODEL	CFM	E.S.P. (IN. WC)	RPM	MOTOR HP	V/Ph	CONTROL
EF-1	GREENHECK	SE1-14-436-A3	2585	0.125"	1750	1/3	120/1	T-STAT

- NOTES:  
 A. PROVIDE INTEGRAL GRAVITY BACKDRAFT DAMPER, MODEL WD-320, AND DAMPER GUARD.  
 B. PROVIDE WALL HOUSING AND GUARD.  
 C. PROVIDE FACTORY MOUNTED DISCONNECT.  
 D. PROVIDE INSECT SCREEN.  
 E. PROVIDE HONEYWELL MODEL T6189B4017/U THERMOSTAT, SET AT 80°F.  
 F. COORDINATE WALL OPENING WITH ARCHITECTURAL AND STRUCTURAL.  
 G. INSTALL PER MANUFACTURER'S RECOMMENDATIONS.  
 H. TO BE PROVIDED BY 7-ELEVEN AND INSTALLED BY CONTRACTOR. FOR ADDITIONAL INFORMATION CONTACT CHAD LITERSKY (214) 350-6871 EXT. 2140 WITH BARTOS INDUSTRIES.

LOUVER SCHEDULE					
MARK	MANUFACTURER	MODEL	SIZE	NET FREE AREA (SQ.FT.)	DESCRIPTION
LV-1	GREENHECK	ESJ-401	42 X 24	3.18	ALUMINUM STATIONARY FIXED BLADE LOUVER NON-DRAINABLE WITH INSECT SCREEN

- NOTES:  
 A. COORDINATE WALL OPENING WITH ARCHITECTURAL AND STRUCTURAL.  
 B. INSTALL PER MANUFACTURER'S RECOMMENDATIONS.  
 C. TO BE PROVIDED BY 7-ELEVEN AND INSTALLED BY CONTRACTOR. FOR ADDITIONAL INFORMATION CONTACT CHAD LITERSKY (214) 350-6871 EXT. 2140 WITH BARTOS INDUSTRIES.

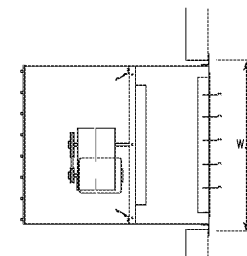


FIGURE 1 - WALL HOUSING INSTALLATION

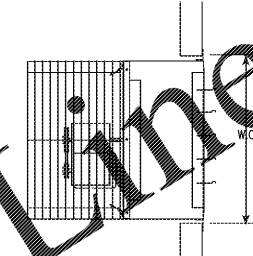


FIGURE 2 - WALL COLLAR INSTALLATION

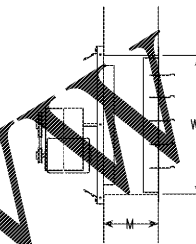


FIGURE 3 - DIRECT TO WALL INSTALLATION

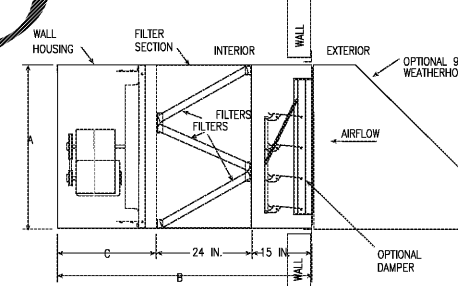


FIGURE 4 - FILTERED SUPPLY WALL HOUSING INSTALLATION

Fan Size	Damper Size Square	Recommended Wall Opening (W.O.) Square				M Minimum	Filtered Supply Wall Housing Only			
		Figures 1 and 2	Figure 3	Figure 4	A		B	C	Filter Quantity & Size	
8	10 (254)	14 1/4 (362)	10 1/2 (267)	-	6 (152)	-	-	-	-	-
10	12 (305)	18 1/4 (413)	12 1/2 (318)	-	6 (152)	-	-	-	-	-
12	14 (356)	19 1/4 (489)	14 1/2 (368)	-	7 (178)	-	-	-	-	-
14	16 (406)	21 1/4 (540)	16 1/2 (419)	-	8 (203)	-	-	-	-	-
16	18 (457)	23 1/4 (591)	18 1/2 (470)	-	9 (229)	-	-	-	-	-
18	20 (508)	25 1/4 (641)	20 1/2 (521)	-	10 (254)	-	-	-	-	-
20	22 (559)	27 1/4 (692)	22 1/2 (572)	-	12 (305)	-	-	-	-	-
24	26 (660)	33 1/4 (857)	28 1/2 (729)	33 1/4 (857)	13 (330)	32 1/4 (819)	83 (1600)	24 (610)	4	23 1/4 x 16 1/2 (591 x 413)
30	32 (813)	39 1/4 (1010)	32 1/2 (826)	39 1/4 (1010)	13 (330)	38 1/4 (972)	85 (1651)	26 (660)	4	24 1/4 x 19 1/2 (625 x 489)
36	38 (965)	45 1/4 (1162)	38 1/2 (979)	45 1/4 (1162)	14 (356)	44 1/4 (1124)	87 1/4 (1708)	28 1/2 (718)	6	23 1/4 x 22 1/2 (591 x 562)
42	44 (1118)	51 1/4 (1314)	44 1/2 (1130)	51 1/4 (1314)	15 (381)	50 1/4 (1273)	92 1/4 (1851)	34 (864)	6	24 1/4 x 25 1/2 (613 x 638)
48	50 (1270)	57 1/4 (1467)	50 1/2 (1283)	57 1/4 (1467)	16 (406)	56 1/4 (1426)	97 1/4 (1851)	34 (864)	12	23 1/4 x 18 1/2 (591 x 476)
54	56 (1422)	63 1/4 (1619)	56 1/2 (1435)	63 1/4 (1619)	17 (432)	62 1/4 (1584)	99 1/4 (2024)	40 1/2 (1033)	12	23 1/4 x 20 1/2 (591 x 527)
60	62 (1575)	69 1/4 (1772)	62 1/2 (1588)	-	19 (483)	-	-	-	-	-
72	74 (1880)	84 1/4 (2153)	74 1/2 (1892)	-	19 (483)	-	-	-	-	-

All dimensions given in inches (millimeters). Filters are 2 inch (51 mm) nominal thickness. Above filter sizes are actual dimensions.

**WALL MOUNTED EXHAUST FAN DETAIL**