



7-ELEVEN, INC.
CAR WASH
STORE #41559

1245 S. VOLUSIA AVENUE
ORANGE CITY, FL 32763

PROTO: 02-03-2017

SEAL:

THIS DOCUMENT IS NOT
FOR REGULATORY
APPROVAL, PERMITTING,
OR CONSTRUCTION.

FOR BIDDING ONLY

09/03/2020

CODE / PROJECT DATA

- APPLICABLE CODE REFERENCE:
2017 FLORIDA BUILDING CODE 6TH EDITION - BUILDING
2017 FLORIDA BUILDING CODE 6TH EDITION - PLUMBING
2017 FLORIDA BUILDING CODE 6TH EDITION - MECHANICAL
2014 NATIONAL ELECTRIC CODE 5TH EDITION - ELECTRICAL
2017 FLORIDA FIRE PREVENTION CODE 6TH EDITION - FIRE/LIFE SAFETY
2018 NFPA 1 & NFPA 101 FL EDITION
- AREA:
CAR WASH GROSS AREA: 1,000 S.F.
- ROOF LOADS
LIVE LOAD: 20 PSF
DEAD LOAD: 25 PSF
- WIND VELOCITY: 139 MPH (ULT)/ 108 MPH (ASD) WITH 3 SEC. GUST
EXPOSURE CATEGORY: C
RISK CATEGORY: II
INTERNAL PRESSURE COEFFICIENT: 0.18
WIND PRESSURES: SEE STRUCTURAL DWG. SHEET CWS2.1 FOR MORE INFORMATION.

VICINITY MAP



REVISION ISSUE LOG

REV #	DATE	DESCRIPTION	AFFECTED SHEETS	REMARKS	BY
1	04/27/20	PEER COMMENTS	CS, AO.3, AO.4, AO.5, A2.1, A2.2, A2.3, A2.4, A2.5, A2.6, A2.7, A2.8, A2.9, A5.1, A5.2, A5.3, A7.1, A7.2, EF1.0, EF1.1, EF2.0, CWS3.1, CWS3.2, CWS3.3, CWS3.4, CWS3.5, CWS3.6, CWS3.7, CWS3.8, CWS3.9, CWS3.10, CWS3.11, CWS3.12, CWS3.13, CWS3.14, CWS3.15, CWS3.16, CWS3.17, CWS3.18, CWS3.19, CWS3.20, CWS3.21, CWS3.22, CWS3.23, CWS3.24, CWS3.25, CWS3.26, CWS3.27, CWS3.28, CWS3.29, CWS3.30, CWS3.31, CWS3.32, CWS3.33, CWS3.34, CWS3.35, CWS3.36, CWS3.37, CWS3.38, CWS3.39, CWS3.40, CWS3.41, CWS3.42, CWS3.43, CWS3.44, CWS3.45, CWS3.46, CWS3.47, CWS3.48, CWS3.49, CWS3.50, CWS3.51, CWS3.52, CWS3.53, CWS3.54, CWS3.55, CWS3.56, CWS3.57, CWS3.58, CWS3.59, CWS3.60, CWS3.61, CWS3.62, CWS3.63, CWS3.64, CWS3.65, CWS3.66, CWS3.67, CWS3.68, CWS3.69, CWS3.70, CWS3.71, CWS3.72, CWS3.73, CWS3.74, CWS3.75, CWS3.76, CWS3.77, CWS3.78, CWS3.79, CWS3.80, CWS3.81, CWS3.82, CWS3.83, CWS3.84, CWS3.85, CWS3.86, CWS3.87, CWS3.88, CWS3.89, CWS3.90, CWS3.91, CWS3.92, CWS3.93, CWS3.94, CWS3.95, CWS3.96, CWS3.97, CWS3.98, CWS3.99, CWS3.100		JMA
2	07/30/20	PEER REVIEW COMMENTS	CS, AO.3, AO.4, AO.5, A5.1, EF1.0, EF1.1, EF2.0, EF2.1, CWA1.0		JUM
3	08/28/20	PEER COMMENTS	CS, S2.1, A1.0, A2.3, A5.1, EF1.0, EF1.1, M0.1, M1.1, M1.2, EMS1.0, P1.0, CWS	INCLUDES CR2020-10 & CR2020-11 UPDATES	JMA

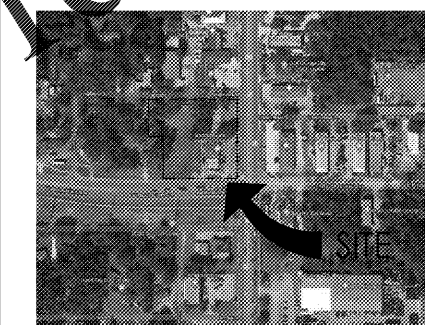
SHEET INDEX

SHT. NO.	DESCRIPTION
CWCS	CAR WASH COVER SHEET
CARWASH STRUCTURAL DRAWINGS	
CWS0.1	CAR WASH STRUCTURAL NOTES
CWS1.1	CAR WASH STRUCTURAL PLANS
CWS2.1	CAR WASH STRUCTURAL TYPICAL SECTIONS AND DETAILS
CWS3.1	CAR WASH STRUCTURAL TYPICAL SECTIONS AND DETAILS
CARWASH ARCHITECTURAL DRAWINGS	
CWA1.0	CAR WASH PLAN SECTIONS AND DETAILS
CWA2.0	CAR WASH ELEVATIONS AND SECTIONS
CWA3.0	CAR WASH WALL SECTIONS
CWA4.0	CAR WASH BAY AND EQUIPMENT LAYOUT
CARWASH MEP DRAWINGS	
CWP1.0	CAR WASH RECOVERY AND PLUMBING SCHEDULE
CWP1.1	CAR WASH PLUMBING PLAN
CWP2.0	CAR WASH PLUMBING SPECS
CWP2.1	CAR WASH PLUMBING SPECS
CWP2.2	CAR WASH DETAILS
CWE1.0	CAR WASH POWER PLAN
CWE2.0	CAR WASH CONTROL WIRING AND POWER
CWE3.0	CAR WASH LIGHTING PLAN
CWE4.0	CAR WASH ELECTRICAL SPECS

FLORIDA PRODUCT APPROVAL

EXIT DOOR FL 3905-R8
ROOFING FL 16039-R15

LOCATION MAP



NO. DATE REMARKS
REVISIONS



7-ELEVEN
STORE #41559

1245 S. VOLUSIA AVENUE
Orange City, FL 32763

PROJECT NO: 2019.0743
DATE: APRIL 7, 2020

CWCS
CAR WASH COVER SHEET

CHECKED: RW DRAWN: JM