

SEAL:

THIS DOCUMENT IS NOT
FOR REGULATORY
APPROVAL, PERMITTING,
OR CONSTRUCTION.

FOR BIDDING ONLY
09/03/2020

NO DATE REMARKS
REVISIONS



7-ELEVEN
STORE #41559

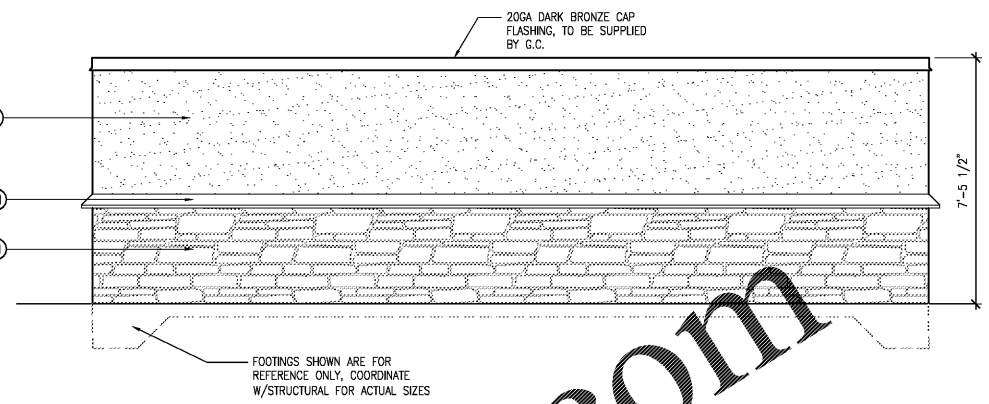
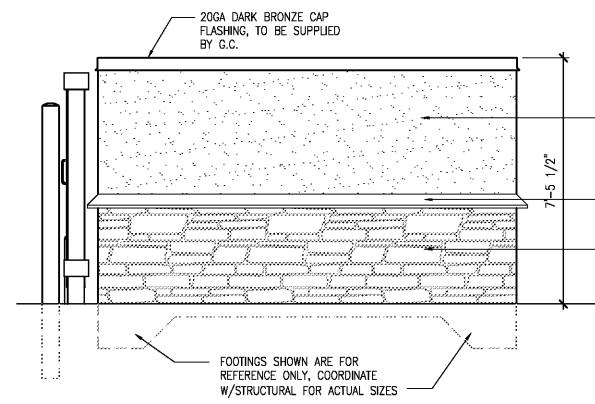
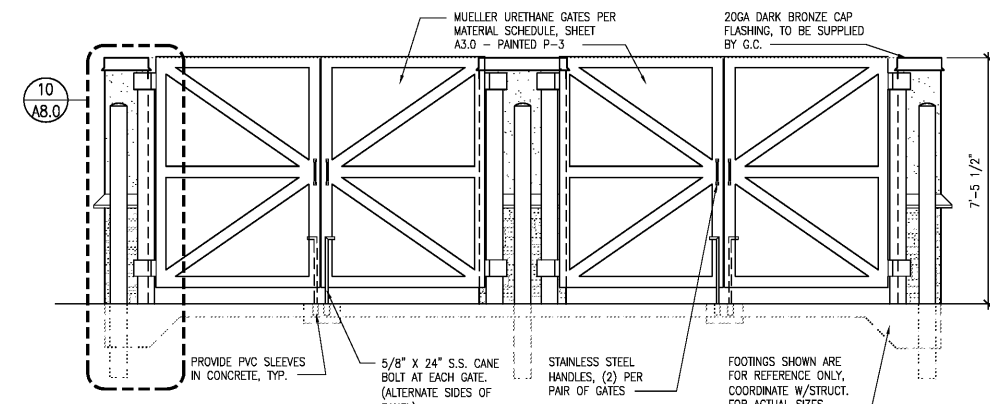
1245 S. VOLUSIA AVENUE
Orlando City, FL 32763

PROJECT NO: 2019.0743
DATE: APRIL 7, 2020

A8.0

DUMPSTER ENCLOSURE PLAN
SECTION AND DETAILS

CHECKED: RW DRAWN: JM

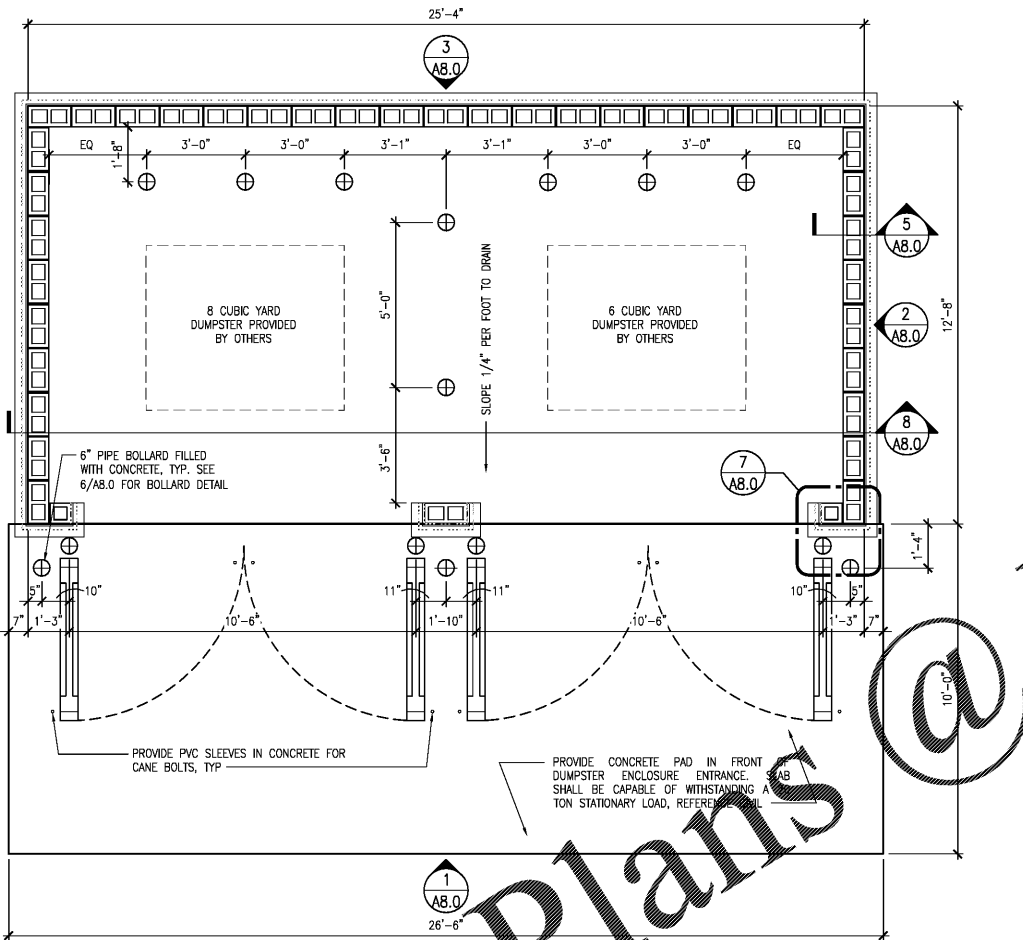


1 FRONT DUMPSTER ENCLOSURE ELEVATION 3/8" = 1'-0"

2 SIDE DUMPSTER ENCLOSURE ELEVATION 3/8" = 1'-0"

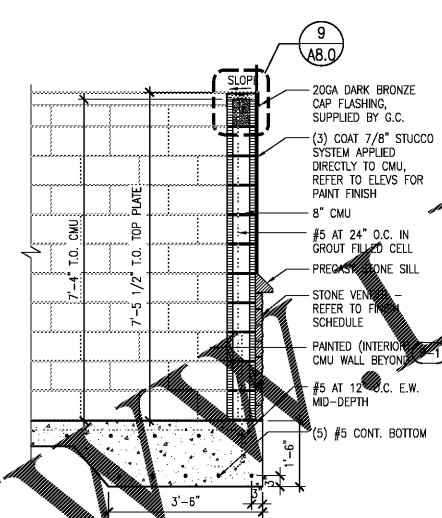
3 REAR DUMPSTER ENCLOSURE ELEVATION 3/8" = 1'-0"

7-11_DUMPSTER ELEV - STUCCO_STONE (2017-1)



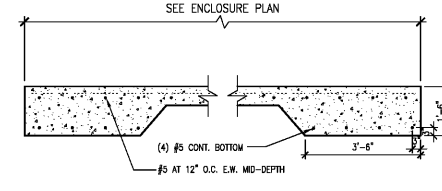
4 DUMPSTER ENCLOSURE PLAN 3/8" = 1'-0"

7-11_DUMPSTER PLAN - STUCCO_STONE (2017-1)



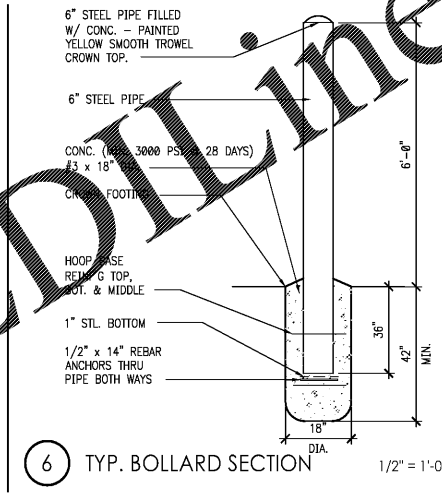
5 DUMPSTER ENCLOSURE WALL SECTION 1/2" = 1'-0"

7-11_DUMPSTER WALL SECTION - STUCCO_STONE (2017-1)



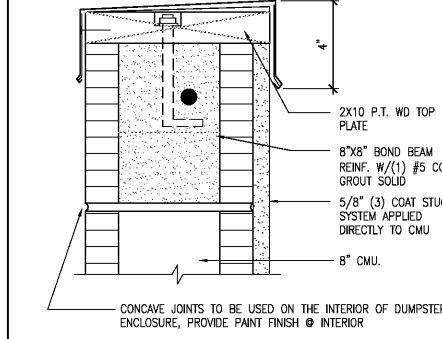
8 DUMPSTER ENCLOSURE SLAB SECTION 3/8" = 1'-0"

7-11_DUMPSTER SLAB DET - CONC-FOOTING (2017-1)



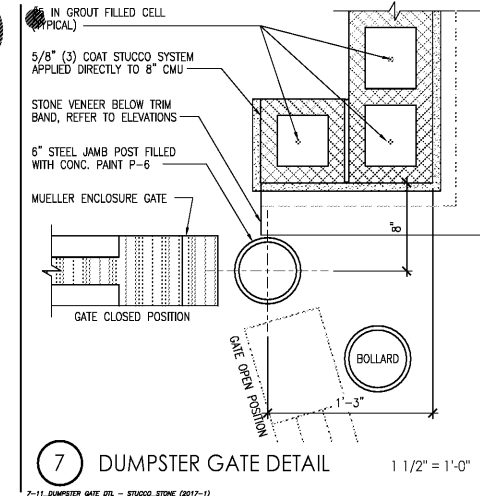
6 TYP. BOLLARD SECTION 1/2" = 1'-0"

7-11_DUMPSTER BOLLARD DET - STUCCO_STONE (2017-1)



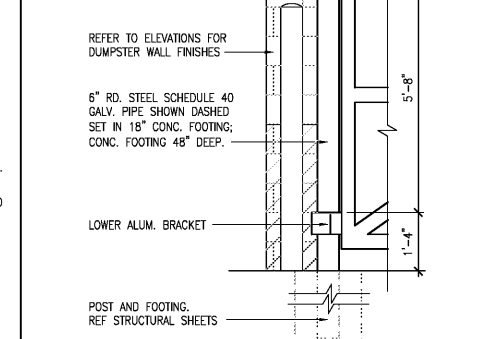
9 CAP FLASHING DETAIL 3" = 1'-0"

7-11_DUMPSTER ENCLOSURE CAP DET - STUCCO (2017-1)



7 DUMPSTER GATE DETAIL 1 1/2" = 1'-0"

7-11_DUMPSTER GATE DET - STUCCO_STONE (2017-1)



10 DUMPSTER GATE BOLLARD DETAIL 1/2" = 1'-0"

7-11_DUMPSTER GATE BOLLARD DET - STUCCO_STONE (2017-1)

CODE / PROJECT DATA

1. APPLICABLE CODE REFERENCE:
2017 FLORIDA BUILDING CODE 6TH EDITION - BUILDING
 2. AREA:
DUMPSTER ENCLOSURE GROSS AREA: 326 S.F.
 3. FLOOR LIVE LOAD: 250 PSF.
 4. WIND VELOCITY: 139 MPH (ULT)/ 108 MPH (ASD) WITH 3 SEC. GUST
- EXPOSURE CATEGORY: C
 RISK CATEGORY: II
 INTERNAL PRESSURE COEFFICIENT: 0.18
 WIND PRESSURES: SEE STRUCTURAL DWG. SHEET SS.1 FOR MORE INFORMATION.

Order Plans @