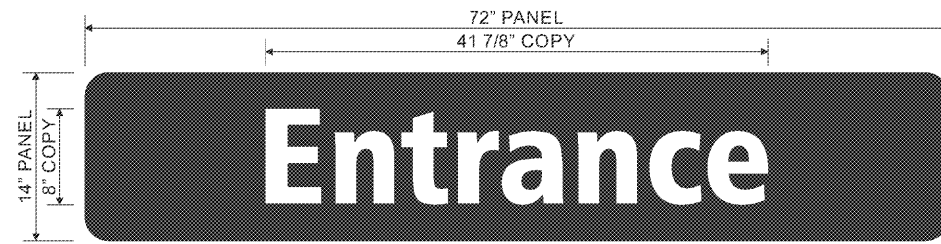


Date	Rev.	Description
12.28.19	00	Original
03.17.20	R1	Update with new building elevations
03.30.20	R2	Update art with new site plan, elevations
08.31.20	R3	Update with new site plan and make changes on redlines

ZONING: CG

SQUARE FOOTAGE FORMULA



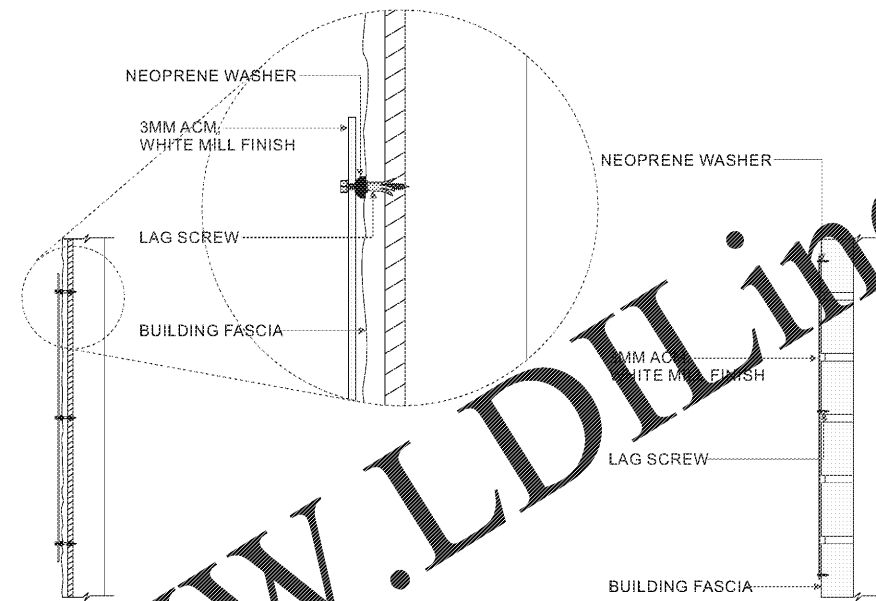
ONE (1) 3MM THICK ACM "ENTRANCE" PANEL. WHITE ACM ROUTED PANEL WITH GREEN VINYL THEN WHITE VINYL ON TOP APPLIED FIRST SURFACE. PANEL TO BE INSTALLED FLUSH ONTO BUILDING WALL.

VINYL COLOR SPECS: 3M 3630-26 GREEN, WHITE

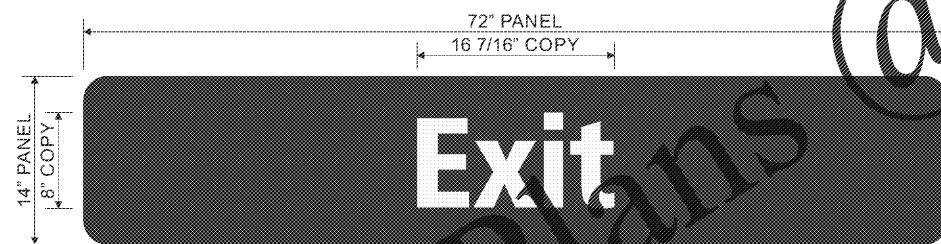
NOTE: MOUNTING METHOD TO CAR WASH BUILDING MAY CHANGE PER LOCATION

Front Elevation & Side Mounting Detail - Standard 1'-2"x6'-0" Entrance Panel - Sign J4

3/4" = 1'-0"



Display Square Footage: 7.0



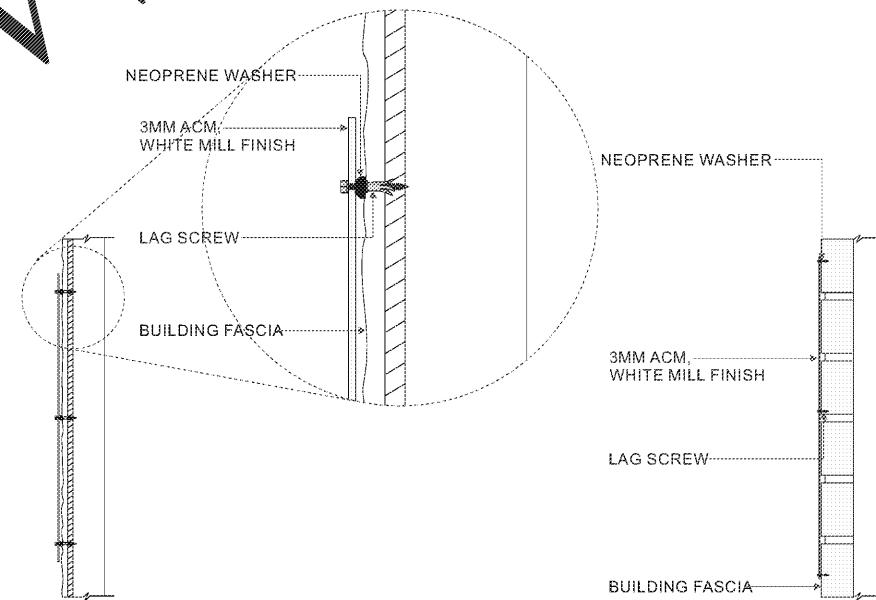
ONE (1) 3MM THICK ACM "EXIT" PANEL. WHITE ACM ROUTED PANEL WITH GREEN VINYL THEN WHITE VINYL ON TOP APPLIED FIRST SURFACE. PANEL TO BE INSTALLED FLUSH ONTO BUILDING WALL.

VINYL COLOR SPECS: 3M 3630-26 GREEN, WHITE

NOTE: MOUNTING METHOD TO CAR WASH BUILDING MAY CHANGE PER LOCATION

Front Elevation & Side Mounting Detail - Standard 1'-2"x6'-0" Exit Panel - Sign J4

3/4" = 1'-0"

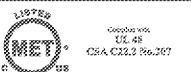


Display Square Footage: 7.0

Site Notes:

Customer Approval: _____ DATE: _____

Page: 10



THE STRUCTURAL DESIGN CONFORMS TO THE FOLLOWING CODES AND SPECIFICATIONS:
THE FLORIDA BUILDING CODE SIXTH EDITION (2011), THE AMERICAN INSTITUTE OF STEEL CONSTRUCTION (MANUAL OF STEEL CONSTRUCTION, 9TH EDITION), THE AMERICAN WELDING SOCIETY (AWS D1.1), THE AMERICAN CONCRETE INSTITUTE BUILDING CODE REQUIREMENTS FOR STRUCTURAL CONCRETE (ACI 308-14), THE SPECIFICATION FOR ALUMINUM STRUCTURES BY THE ALUMINUM ASSOCIATION (CURRENT EDITION).