

www.harbingersign.com

CLIENT: 7-ELEVEN #41559 (I046381)

ADDRESS: VOLUSIA AVE & RHODE ISLAND AVE.
ORANGE CITY, FL 32763

CONTACT: DPM: RCC:

SALES ASSOC.: Rick Guarino

PROJECT MGR: Stephanie Lopez

DESIGNER: Brandon Winebarger

SVE_41559_Q119648_R3

F:\Customers\7-ELEVEN\Art\SVE_I046381_Q119648_R3.CDR

Date	Rev.	Description
12.28.19	00	Original
03.17.20	01	Update with new building elevations
03.30.20	02	Update art with new site plan, elevations
08.31.20	03	Update with new site plan and make changes on redlines

ZONING: CG

SQUARE FOOTAGE FORMULA

Long Canopy Code Information:

Formula: Copy area may not cover more than 25 percent of the primary face of the canopy or awning.

Allowed: 90.0 sqft

Proposed: 9.0 sqft

Short Canopy Code Information:

Formula: Copy area may not cover more than 25 percent of the primary face of the canopy or awning.

Allowed: 27.0 sqft

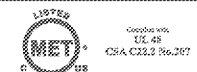
Proposed: 9.0 sqft

Note: 7-Eleven striping on the canopy fascia is allowed and does not count toward overall site signage.

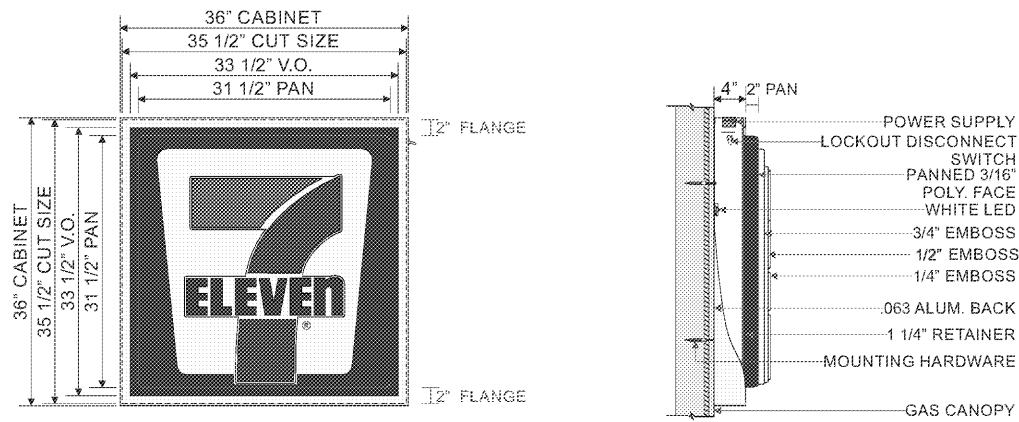
Site Notes:

Customer Approval: _____ DATE: _____

Page: 6



THE STRUCTURAL DESIGN CONFORMS TO THE FOLLOWING CODES AND SPECIFICATIONS:
THE FLORIDA BUILDING CODE SIXTH EDITION (2011), THE AMERICAN INSTITUTE OF STEEL CONSTRUCTION (MANUAL OF STEEL CONSTRUCTION, 9TH EDITION), THE AMERICAN WELDING SOCIETY (AWS D1.1), THE AMERICAN CONCRETE INSTITUTE BUILDING CODE REQUIREMENTS FOR STRUCTURAL CONCRETE (ACI 308-14), THE SPECIFICATION FOR ALUMINUM STRUCTURES BY THE ALUMINUM ASSOCIATION (CURRENT EDITION).



TWO (2) W9 S/F INTERNALLY ILLUMINATED CANOPY SIGN CABINET.
3/16" THICK PAN FORMED & EMBOSSED WHITE POLY. FACE W/ TRANSLUCENT VINYL GRAPHICS APPLIED FIRST SURFACE. 4" DEEP ALUM. CABINET W/ 1 1/4" RETAINERS TO BE PAINTED WHITE. CABINET TO BE INTERNALLY ILLUMINATED W/ WHITE LEDES.

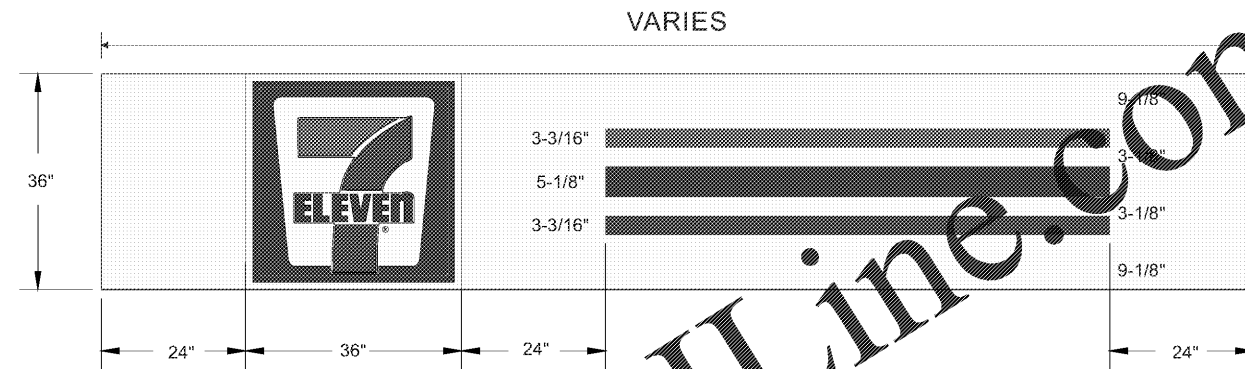
VINYL SPECS: 3M 3630-44 ORANGE, 3M 3630-33 RED, 3M 3630-26 GREEN
PAINT SPECS: PMS WHITE

7-ELEVEN LOGO
DIMENSIONS:
OAH: 29 1/2"
OAL: 27"

Face & Side Detail - W9 Canopy Sign Cabinet - Sign F

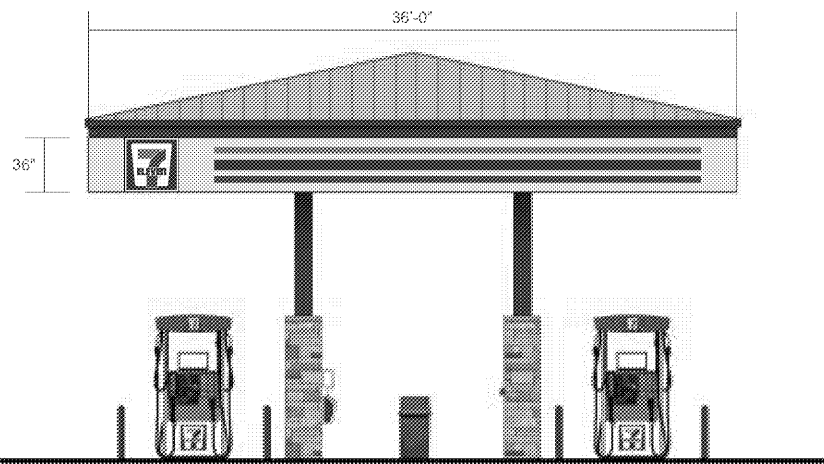
1/2" = 1'-0"

Display Square Footage(Cabinet): 9.0

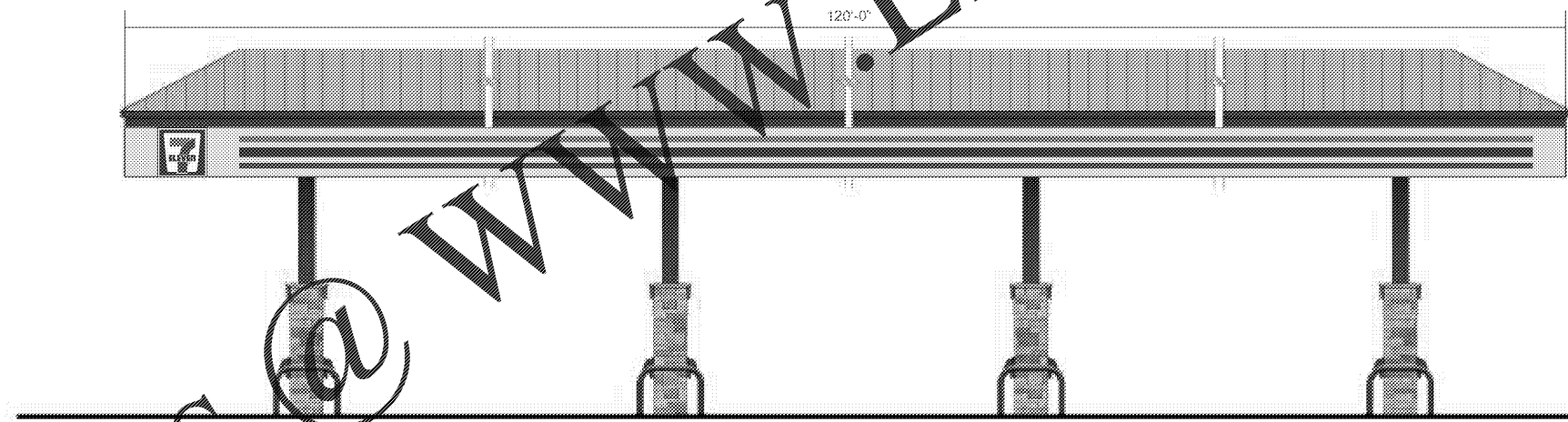


Front Elevation - 36" Canopy Height - Sign And Graphics Layout - Sign F

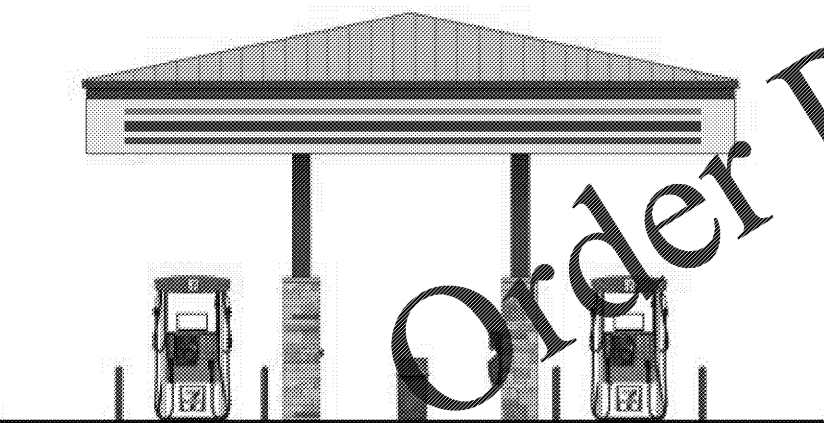
3/8" = 1'-0"



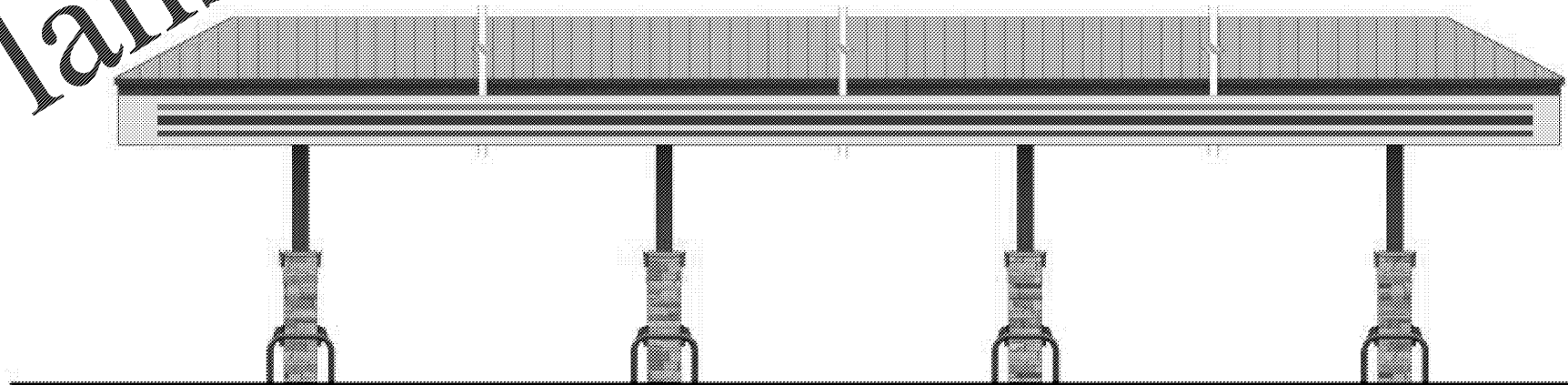
SOUTH ELEVATION: 9.0 SQ. FT.



EAST ELEVATION: 9.0 SQ. FT.



NORTH ELEVATION:



WEST ELEVATION:

Canopy Overlay - Sign Type F

NTS