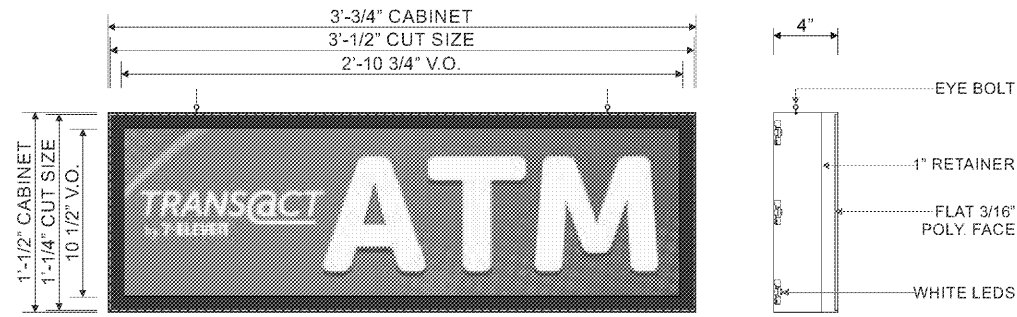


Date	Rev.	Description
12.09.19	00	Original
03.17.20	01	Update with new building elevations
03.30.20	02	Update art with new site plan, elevations
08.31.20	03	Update with new site plan and make changes on redlines

ZONING: CG

SQUARE FOOTAGE FORMULA



ONE (1) INTERIOR ATM INTERNALLY ILLUMINATED S/F WINDOW SIGN. 3/16\" THICK FLAT WHITE POLYCARBONATE FACE W/ DIGITALLY PRINTED IMAGE VINYL TO BE APPLIED FIRST SURFACE. CABINET TO BE INTERNALLY ILLUMINATED W/ GE WHITE LEDS. 4 DEEP ALUM. CABINET & 1\" RETAINERS ALL PAINTED 313E DURANODIC BRONZE. SIGN TO HANG INSIDE THE STORE BEHIND GLASS AS INDICATED IN PHOTO OVERLAY WITH EYE BOLTS.

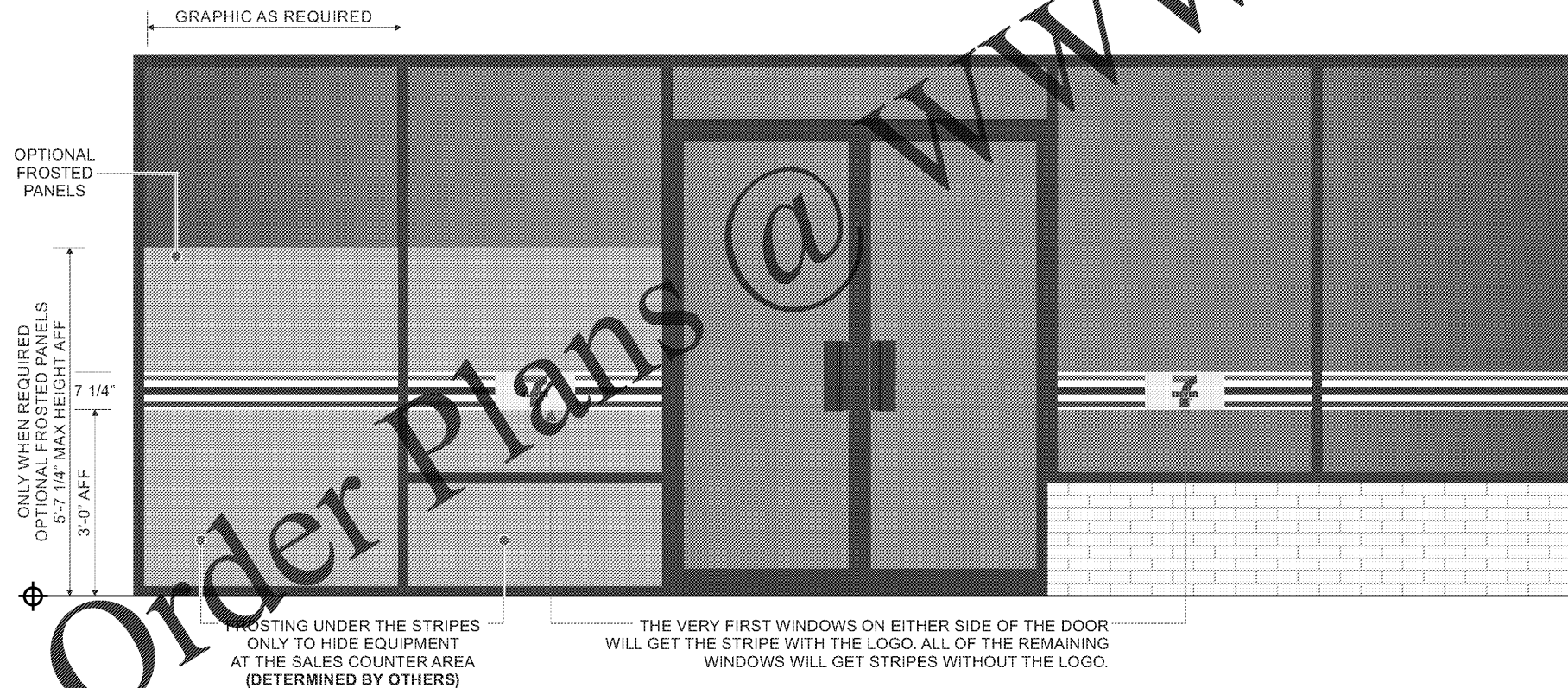
VINYL SPECS: DIGITALLY PRINTED IMAGE VINYL  
PAINT SPECS: 313E DURANODIC BRONZE

NOTE: ATM SIGN TO BE FABRICATED & INSTALLED BY OTHERS

Front Elevation & Side Mounting Detail - ATM S/F Window Sign - Sign B

1\" = 1'-0\"

Display Square Footage (Cabinet): 3.2



WINDOW VINYL GRAPHICS.

VINYL GRAPHICS TO BE APPLIED SECOND SURFACE ONTO DESIGNATED STORE WINDOWS.

NOTE: WINDOW GRAPHICS KITS TO BE PROVIDED AND INSTALLED BY OTHERS. NOT PART OF HARBINGERS SCOPE OF WORK.

NOTE: FOR FULL INSTALLATION INSTRUCTIONS, REFER TO 7-ELEVEN SIGNAGE MANUAL.

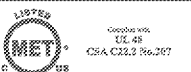
Front Elevation - Typical Window Vinyl Graphics - Sign C

3/8\" = 1'-0\"

Site Notes:

Customer Approval: \_\_\_\_\_ DATE: \_\_\_\_\_

Page: 3



THE STRUCTURAL DESIGN CONFORMS TO THE FOLLOWING CODES AND SPECIFICATIONS:  
THE FLORIDA BUILDING CODE SIXTH EDITION (2011), THE AMERICAN INSTITUTE OF STEEL CONSTRUCTION/MANUAL OF STEEL CONSTRUCTION, 9TH EDITION, THE AMERICAN WELDING SOCIETY/AWS D1.1: THE AMERICAN CONCRETE INSTITUTE BUILDING CODE REQUIREMENTS FOR STRUCTURAL CONCRETE (ACI 308-14), THE SPECIFICATION FOR ALUMINUM STRUCTURES BY THE ALUMINUM ASSOCIATION (CURRENT EDITION).