

| Luminaire Schedule | | | | | | | |
|--------------------|-----|------------|-------------|-------|-------------|------------|---------------------------------|
| Symbol | Qty | Label | Arrangement | LMF | Lum. Lumens | Lum. Watts | Part Number |
| | 10 | XSPW | WALL MOUNT | 1.000 | 4270 | 31 | XSPW-B-WM-3ME-4L-57K-UL-BZ |
| | 4 | XSPWG-4ME | SINGLE | 1.000 | 23600 | 184 | XSPWG-D-HT-4ME-24L-57K7-UL-BZ-N |
| | 4 | XSPWG-3ME | SINGLE | 1.000 | 23600 | 184 | XSPWG-D-HT-3ME-24L-57K7-UL-BZ-N |
| | 2 | CPY-FLAT-C | SINGLE | 1.000 | 4520 | 31 | CPY250-B-DM-F-C-UL-BZ-57K-HZ |
| | 24 | CPY-FLAT-B | SINGLE | 1.000 | 12860 | 96 | CPY250-B-DM-F-B-UL-WH-57K-HZ |

| Calculation Summary (Footcandles calculated using initial lumen values) | | | | | | |
|---|-------|-------|------|------|---------|---------|
| Label | Units | Avg | Max | Min | Avg/Min | Max/Min |
| Overall Site | Fc | 3.70 | 33.5 | 0.0 | N.A. | N.A. |
| Undercanopy | Fc | 44.71 | 64.0 | 24.6 | 1.82 | 2.60 |
| PAVED AREA | Fc | 18.25 | 64.0 | 1.1 | 16.59 | 58.18 |

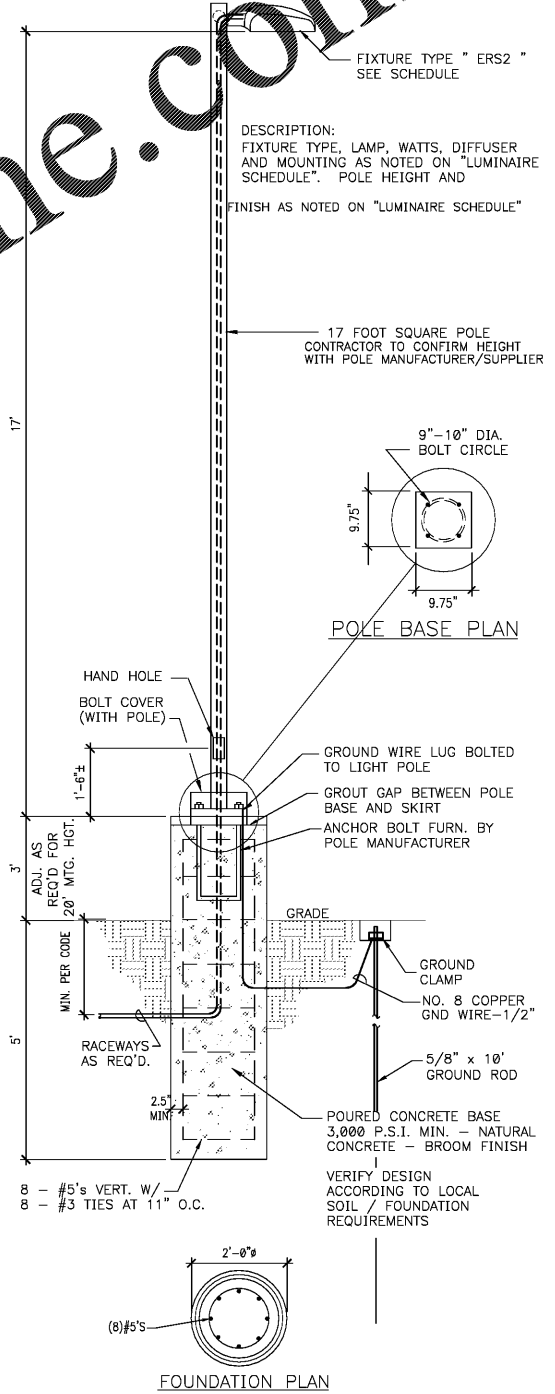
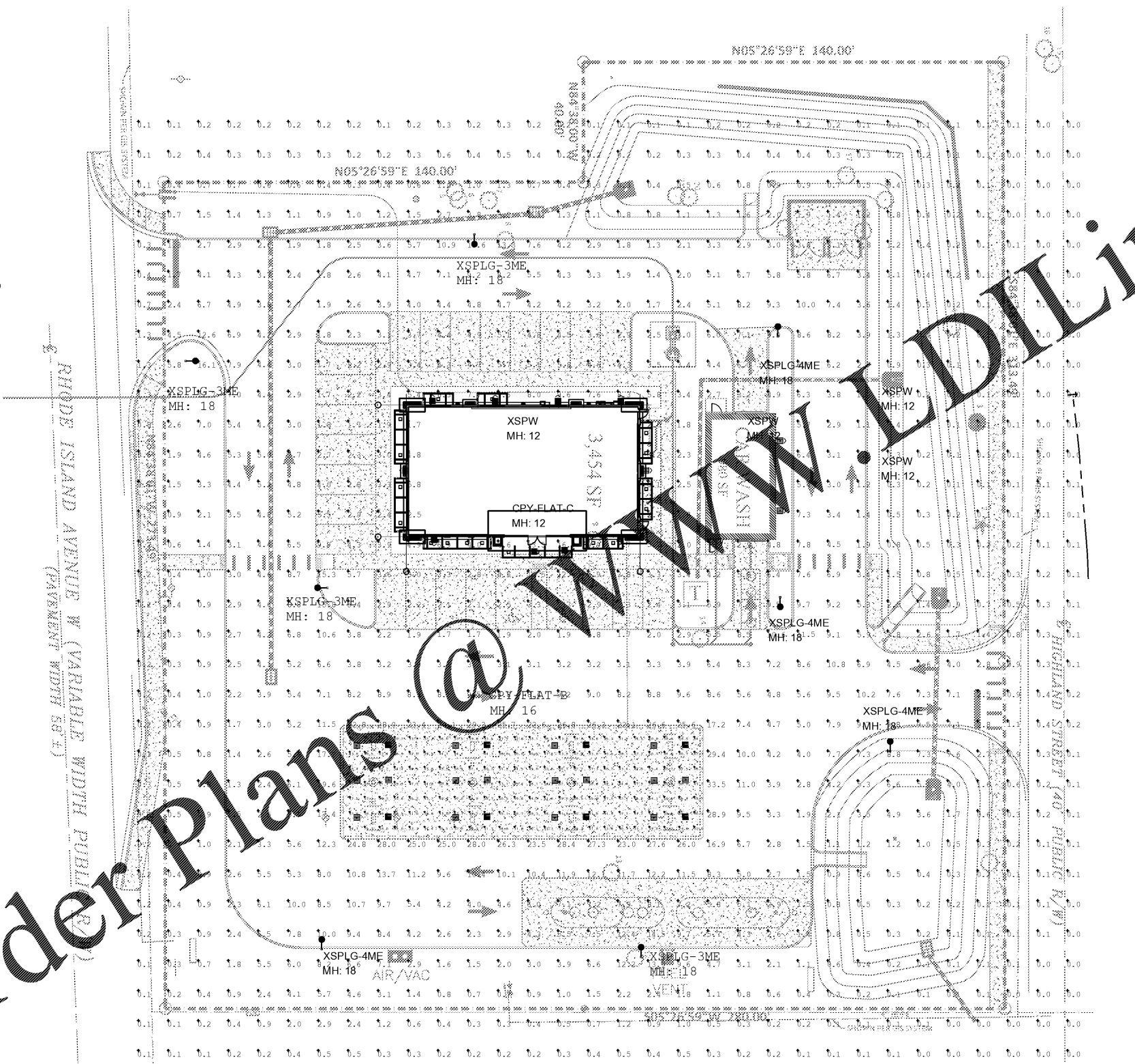
BOM: Complete Part Description

| | |
|----|---------------------------------|
| 24 | CPY250-B-DM-F-B-UL-WH-57K-HZ |
| 02 | CPY250-B-DM-F-C-UL-WH-57K-HZ |
| 04 | XSPWG-D-HT-4ME-24L-57K7-UL-BZ-N |
| 04 | XSPWG-D-HT-3ME-24L-57K7-UL-BZ-N |
| 10 | XSPW-B-WM-3ME-4L-57K-UL-BZ |
| 08 | SSS-4-7-15-CW-BS-OT-N-BZ |
| 08 | PD-1H4BZ |

Pole Schedule
 (8) SSS-4-7-15-CW-BS-OT-N-BZ (15' X 4" X 7ga STEEL SQUARE POLE)
 Proposed poles meet 180 MPH sustained winds.

Additional Equipment:
 (8) PD-1H4BZ (Single Head Tonon)

*** CUSTOMER TO VERIFY ORDERING INFORMATION AND CATALOGUE NUMBER PRIOR TO PLACING ORDER ***



NOTES:
 ALL CONCRETE POLE BASES TO BE INSTALLED OF 24"-36" BEHIND BACK OF CONCRETE CURB.
 POLE SHALL BE CAPABLE OF WITHSTANDING 150 MPH WIND SPEED.

THIS DOCUMENT IS NOT FOR REGULATORY APPROVAL, PERMITTING, OR CONSTRUCTION.

FOR BIDDING ONLY

09/03/2020



7-ELEVEN
 STORE #41559

1245 S. VOLUSIA AVENUE
 Orange City, FL 32763

PROJECT NO: 2019.0743
 DATE: APRIL 7, 2020

SL-1
 SITE LIGHTING PLAN

SITE LIGHTING PLAN



1 SITE LIGHTING POLE AND BASE
 NTS