

SEAL:

**THIS DOCUMENT IS NOT
FOR REGULATORY
APPROVAL, PERMITTING,
OR CONSTRUCTION.**

FOR BIDDING ONLY

09/03/2020

NO. DATE REMARKS
REVISIONS



7-ELEVEN
STORE #41559

1245 S. VOLUSIA AVENUE
Orange City, FL 32763

PROJECT NO: 2019.0743
DATE: APRIL 7, 2020

P2.1
PLUMBING DETAILS &
SPECIFICATION

CHECKED: JL DRAWN: ROH

JONLOP - 09/02/2020 3:35:02 PM

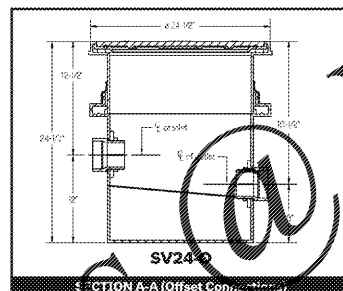
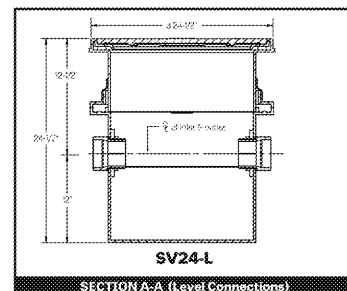
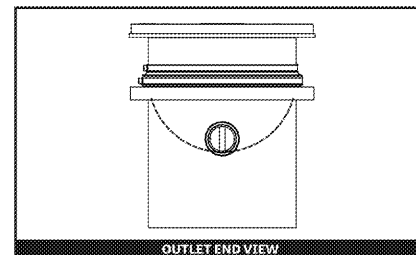
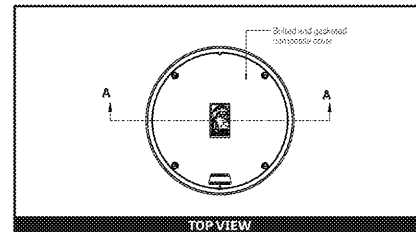
SPECIFICATIONS

NOTES

1. 4" galv-weld inlet/outlet
2. Unit weight - 155 lbs.
3. Unit supplied with built-in adapter for up to 3" of non-rigid pipe adjustability. Additional riser(s) are also available for deeper burial depths.
4. Maximum operating temperature: 140°F continuous

ENGINEER SPECIFICATION GUIDE

Schier Grease Interceptor™ approxing part model SV24 shall be manufactured by Schier Products, Lakeview, IL, Part shall be lifetime guaranteed and made in USA of stainless steel and polyethylene.



	MODEL NUMBER:	SV24	DESCRIPTION:	1.5 Gallon Whitewater Strapping Pump
	DATE:	02/14/19	REV:	01/20/20
page 3 of 5				

SPECIFICATIONS

1. 4" Inlet/Outlet Sdn. 40, Plain End/No-Hub
2. Flow rate: 125 GPM*
3. Liquid capacity: 52 Gallons
4. Solids capacity: 25 Gallons
5. Unit weight w/ob. covers: 155 lbs.
6. H2O rated pickable cast iron cover, 16,000 lbs. load.
7. Maximum operating temperature: 140°F continuous. *1/4" slope based on Manning's formula with friction factor, N=0.012"

NOTES

1. For gravity drainage applications only. Do not use for pressure applications.
2. 3/8" thick seamless polyethylene tank.
3. Unit supplied with built-in adapter for up to 3" of adjustability. Additional riser(s) available for deeper burial depth.
4. Cover placement allows full access to tank for proper maintenance.
5. Designed narrow footprint allows clearance through doorways and down stairwells.
6. Diffuser is removable to inspect or clean.
7. For on-the-floor or buried applications.

ENGINEER SPECIFICATION GUIDE

Striem Settler™ Catch Basin Model CB-50-SFL shall be lifetime guaranteed and made in USA of stainless steel, rotationally molded polyethylene with a minimum 3/16" form wall thickness. Catch Basin shall be furnished for low profile installation with a H2O rated pickable cast iron cover, 16,000 lbs. load capacity. Catch Basin shall be provided with a standard connection.

THIRD PARTY STRUCTURAL ANALYSIS

The CB-50-SFL has been analyzed in accordance with the requirements of IBC 2012 and ASCE 7 for direct burial. The maximum burial depth and burial conditions are specified in our installation instructions. The structural design has been reviewed and approved by a professional engineer registered in the state of California. A structural analysis report is available upon request.

- DELTA
- CC-1 Integral membrane clamping collar
 - AK-1 1/2" water table 304 stainless steel anchor kit
- INSTALLATION OPTIONS**
- SR24 -> 21"-21"
 - SR24 -> 36"-40"
 - SR24 - LR24 -> 40"-55"
 - LR24 -> 55"-60"

**PO IS NON-CANCELABLE
ORDER IS NON-RETURNABLE**

Signature of Approval: _____
Company: _____
Date of Approval: _____
Specifying Engineer: _____
Engineering Firm: _____

MODEL NUMBER: CB-50-SFL

DESCRIPTION: SETTLER SERIES 52 GALLON LIQUID STORAGE CAPACITY POLYETHYLENE CATCH BASIN WITH H2O RATED PICKABLE CAST IRON COVER

Striem
3100 Brinkerhoff
Kansas City, KS 66115
Tel: 913-221-1599
Fax: 913-221-0457
www.striemco.com

Made in the U.S.A.

Order Plans @ WWW.WholesalePlans.com

P:\7\1\enr\2019\0743 - P2.1.dwg - Volusia Ave @ Rhodie Island Ave - Change City - 11.3 CAD (R Drawings) - Construction Documents\2019\0743 - P2.1.dwg - 11/18/2019 10:11:11 AM - User: JAC/ASD/PLM - General Documents\enr\1 - ARCH\11.dwg (Sheet 02) (DWG) - 24/09/2019 11:11