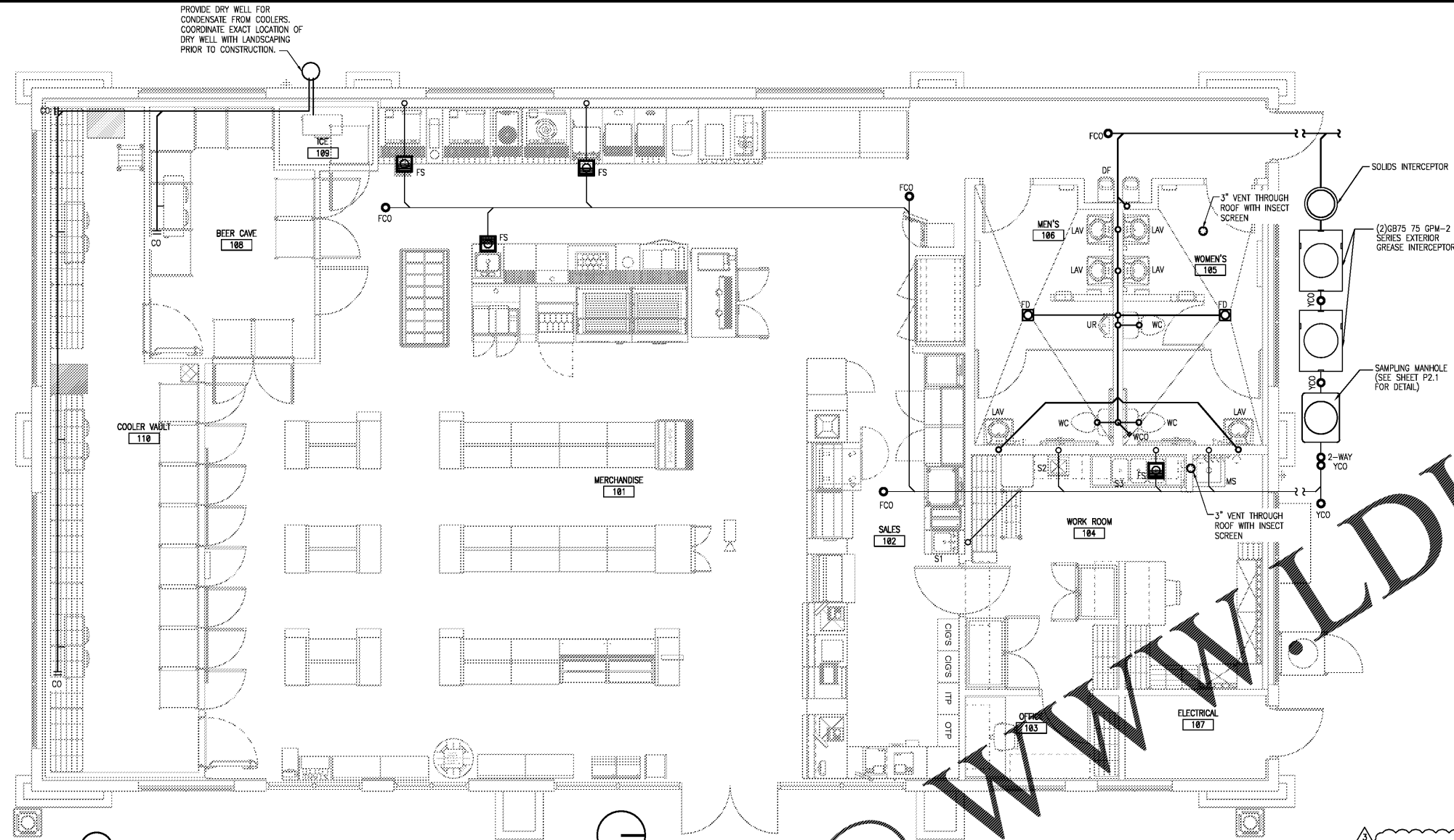


SEAL:

THIS DOCUMENT IS NOT FOR REGULATORY APPROVAL, PERMITTING, OR CONSTRUCTION.

FOR BIDDING ONLY

09/03/2020



SS	SANITARY SEWER
GW	GREASE WASTE
	DOMESTIC COLD WATER
	DOMESTIC HOT WATER
	DOMESTIC HOT WATER RETURN
FW	FILTERED WATER
G	NATURAL GAS
CD	CONDENSATE DRAIN
	PLUMBING VENT
UN	UNION
ELB - TD	ELBOW - TURNED DOWN
ELB - TU	ELBOW - TURNED UP
TEE - TD	TEE - TURNED DOWN
TEE - TU	TEE - TURNED UP
BV	BALL VALVE
SO	SHUT-OFF VALVE IN VERTICAL
BP	BACKFLOW PREVENTER
FD	FLOOR DRAIN
FS	FLOOR SINK
FC	FLOOR CLEANOUT
YCO	YARD CLEANOUT
FPWH	FREEZE PROOF WALL HYDRANT
HB	HOSE BIBB
WCO	WALL CLEANOUT
GR	GAS PRESSURE REGULATOR
GC	GAS COCK

TAG	FIXTURE	MANUFACTURER	MODEL	DESCRIPTION	NOTES
WHA	WATER HAMMER ARRESTOR	SIUX CHIEF	652-A	CONFORM TO PDI WH-201, ASSE 1010; TEMP TO 250°F, MAX 350 PSIG WORKING PRESSURE.	A
TMV	TEMPERATURE MIXING VALVE	WATTS	LFUSG-B-M 1	4/- 3" UP TO 120°F, WITH BUILT-IN CHECK VALVES, BRASS BODY, AND COPPER THERMOSTAT.	
---	TRAP PRIMER	SIUX CHIEF	695	BRONZE PRIMER VALVE WITH REMOVABLE OPERATING PARTS INTEGRAL VACUUM BREAKER, AND GASKETED ACCESS COVER.	
RPZ	REDUCED PRESSURE BACKFLOW PREVENTER	WILKINSON	---	BRONZE BODY, WITH SHUT-OFF VALVES, Y AND TEST COCKS.	
FD	FLOOR DRAIN	SIUX CHIEF	832-36PNQ	3" LIGHT DUTY DRAIN WITH 7" SQUARE TOP, NICKEL BRONZE RING PVC BODY WITH DRAIN AND 1 1/2" VENT. PROVIDED WITH 3" AND STRAINER.	
FS	FLOOR SINK	SIUX CHIEF	861	WHITE PVC 12" X 12" FLOOR SINK WITH 3/4" HEAVY DUTY PVC HALF GRATE, SEDIMENT BUCKET. PROVIDED WITH 3" DRAIN AND 1 1/2" VENT.	
FCO	FLOOR CLEANOUT	SIUX CHIEF	851	PVC BODY, ROUND HEAVY-DUTY CAST IRON TOP, POLYPROPYLENE OR ABS PLUG, ADJUSTABLE TO FINISH SURFACE.	B
YCO	YARD CLEANOUT	SIUX CHIEF	834	DURA-COATED CAST IRON, DOUBLE-FLANGED HOUSING, AND HEAVY-DUTY SCORATED DUCTILE IRON COVER.	B
WCO	WALL CLEANOUT	SIUX CHIEF	873	THREADED, COUNTERSUNK BRONZE CLEANOUT PLUG. PROVIDE DRILLED TAP FOR CENTER SCREW AND STAINLESS STEEL COVER.	

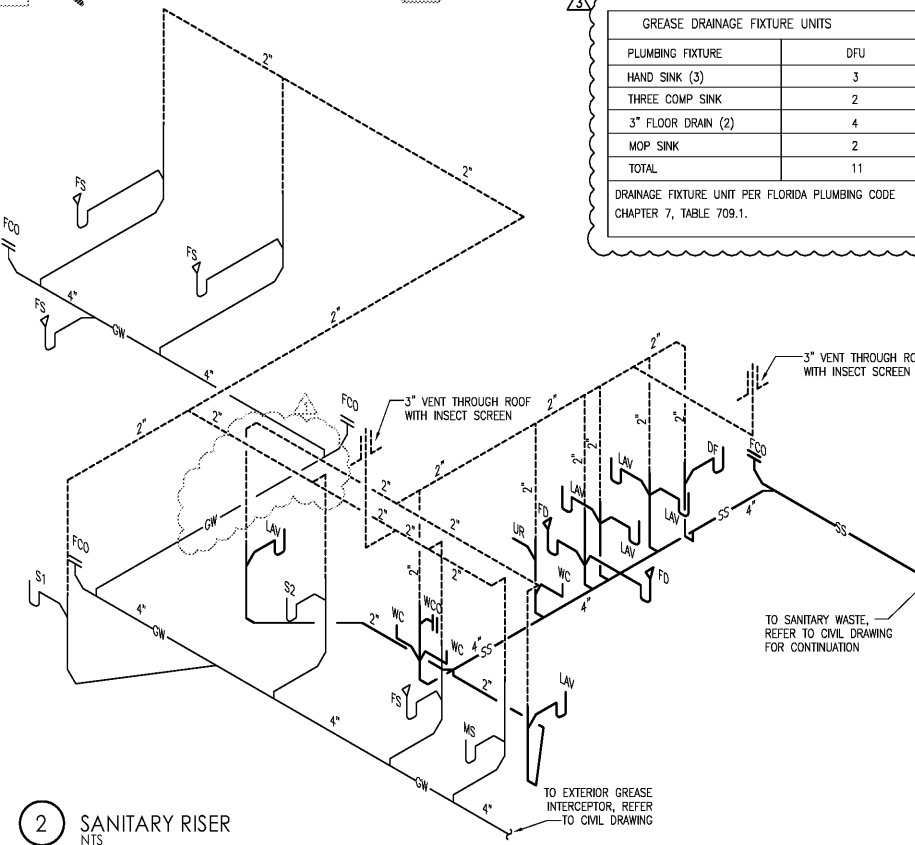
NOTES:  
A. SIZE PER MANUFACTURER'S RECOMMENDATION.  
B. CLEANOUT SHALL BE SAME SIZE AS PIPE BEING SERVED.  
C. THIS SCHEDULE IS COMPREHENSIVE. ALL MARKS MAY OR MAY NOT BE USED ON PLANS.

1 PLUMBING SANITARY PLAN

1/4" = 1'-0"



TAG	FIXTURE	MANUFACTURER	MODEL	CW	HW	WASTE	VENT	DESCRIPTION
WC	WATER CLOSET	AMERICAN STANDARD	CADET 3483.001 (BOWL) 4142.100 (TANK)(L) 4142.801 (TANK)(R)	1/2"	---	4"	2"	FIXTURE AND HARDWARE FURNISHED, INSTALLED BY PLUMBING CONTRACTOR. ROUGH-IN, COLOR: WHITE. AMERICAN STANDARD CADET SEAT, NO COVER, 17" RIM HEIGHT. FOR HANDICAPPED, PRESSURE ASSISTED. FLUSH VALVE CONTROLS ON ACCESSIBLE SIDE OF TOILET. CONTACT SUPPLIER TO COORDINATE WITH FIXTURE SUPPLIER FOR LEFT/RIGHT HAND FLUSH. REFER TO SUPPLIER FOR LOCAL REQUIREMENTS.
LAV	LAVATORY	KOHLER	BRENHAM K-1997-4	1/2"	1/2"	2"	1-1/2"	FAUCET PACKAGE PROVIDED BY OWNER. FIXTURE AND OTHER HARDWARE FURNISHED, INSTALLED BY PLUMBING CONTRACTOR. WALL MOUNT WITH 2 1/2" CONCEALED ARM CARRIER, 4" CENTERS WITH CHROME TAP MODEL # 1203. 3-1/2" VENT. BRENHAM FAUCET, B-0199-03-NOS AERATOR (0.5 GPM). FAUCET INCLUDES 40 GPM CERAMIC MODULE W/ INTEGRAL FLOW CONTROL SETTING. 3" FLEXIBLE HOSES. MOUNTING PLATES AND 105" W/ INTEGRAL CHECK VALVES, 18" STAINLESS STEEL FLEXIBLE HOSES. MOUNTING BRACKET BRENHAM SHROUD K-1998. REF ARCHITECTURAL DRAWINGS FOR FINISH OR UPDATES. INSTALL PER OWNER ROUGH-IN ELEVATIONS.
UR	URINAL	KOHLER	FRESHMAN K-4989-T	3/4"	---	2"	1-1/2"	URINAL SHALL BE VITREOUS CHINA, 3/4" TOP SPUD 1.0 GALLON PER FLUSHED TOP SPUD. FLUSH VALVE SHALL BE EXPOSED SLOAN ROYAL # 8186 -1, CARRIER, WALL URINAL SUPPORT SYSTEM WITH TOP AND BOTTOM SUPPORT PLATES, DURA-COATED RECTANGULAR STEEL UPRIGHT WITH WELDED FEET, ADJUSTABLE SUPPORT PLATES, MOUNTING FASTENERS.
MS	MOP SINK	FIAT	MSB-2424	1/2"	1/2"	3"	1-1/2"	FIXTURE AND HARDWARE FURNISHED, INSTALLED BY PLUMBING CONTRACTOR. NO. 830A FAUCET WITH INTEGRAL VACUUM BREAKER, NO. 832-A HOSE AND BRACKET, NO. 1453BB FLOOR STRAINER AND NO. 899-CO MOP HANGER.
S1	HAND SINK	---	---	1/2"	---	1-1/2"	1-1/2"	FIXTURE AND HARDWARE FURNISHED, INSTALLED BY PLUMBING CONTRACTOR. ADA COMPLIANT, STAINLESS STEEL FIXTURE, BRASS FAUCET & P-TRAP, PROVIDED WITH STOP VALVES, FLEXIBLE SUPPLY RISERS, TRUBRO LAV GUARD 2 PROTECTIVE PIPE COVERS ON EXPOSED HOT WATER AND DRAIN LINES AND TEMPERATURE-ACTUATING MIXING VALVE & SET TO 105° F.
S2	HAND SINK	JOHN BOOS	PRSS-WD1410-SSU	1/2"	1/2"	1-1/2"	1-1/2"	FIXTURE AND HARDWARE FURNISHED, INSTALLED BY PLUMBING CONTRACTOR. ADA COMPLIANT, CUSTOM WALL MOUNT 10" FRONT TO BACK X 14"W X 6"D HAND SINK (PRODUCTION LINE, PROVIDED WITH BRASS FAUCET SUPPLIER PART #B-1146 & P-TRAP, INSTALL TRUBRO LAV GUARD 2 PROTECTIVE PIPE COVERS ON EXPOSED HOT WATER AND DRAIN LINES, STOP VALVES AND TEMPERATURE-ACTUATING MIXING VALVE & SET TO 105° F.
S3	3-COMPARTMENT SINK	TURBO AIR	TS-201-711	1/2"	1/2"	3"	2"	BOWL SIZE 12x19x12. FIXTURE AND HARDWARE FURNISHED, INSTALLED BY PLUMBING CONTRACTOR. PROVIDED WITH T&S MODEL MYPWLN-08CR 8" FAUCET (EP-1 ITEM #800), P-TRAP AND STOP VALVES.
FPWH	FREEZE-PROOF WALL HYDRANT	JOSAM	71000	3/4"	---	---	---	FIXTURE AND HARDWARE FURNISHED, INSTALLED BY PLUMBING CONTRACTOR. BOX TYPE, CAST BRONZE, INTEGRAL VACUUM BREAKER-BACKFLOW PREVENTER, 1" HANDLE, POLISHED FACE, HINGED LOCKING COVER, BRONZE WALL CASTING, RENEWABLE SEAT, BRONZE OPERATING PARTS, 1" N.P.T. INLET, AND 3/4" H.P.T. OUTLET. PROVIDED WITH 25 FOOT HOSE AND SPRAY GUN. MOUNT 24" AFF.
HB	HOSE BIBB	WATTS	SCB	3/4"	---	---	---	FIXTURE AND HARDWARE FURNISHED, INSTALLED BY PLUMBING CONTRACTOR. CAST BRASS THREADED SILLCOCK WITH FLANGE CAST IRON HANDWHEEL, AND TAMPER-PROOF VACUUM BREAKER, 3/4" N.P.T. INLET, AND 3/4" H.P.T. OUTLET. PROVIDED WITH 25 FOOT HOSE AND SPRAY GUN. MOUNT 24" AFF.
DF	DRINKING FOUNTAIN	OASIS	PGACSL	1/2"	---	3"	1-1/2"	NEW DRINKING FOUNTAIN TO BE INSTALLED NEW BY PLUMBING CONTRACTOR SHALL COMPLY WITH ANSI A117.1 AND ADA. SHALL INCLUDE FRONT AND SIDE PUSH PADS TO ACTIVATE THE FLOW OF WATER. BUBBLER SHALL HAVE FLEXIBLE GUARD AND OPERATE BETWEEN 20 AND 120 PSI.
GI	GREASE INTERCEPTOR	SCHER PRODUCTS	GB-75-2 SERIES	---	---	4"	---	SEAMLESS MOLDED POLYETHYLENE TANK, 4" INLET / OUTLET SCHEDULE 40 PLAIN END (NO-HUB), 75 GPM, 125 GALLON LIQUID CAPACITY, 653 LBS GREASE CAPACITY, 19.2 LBS SOLIDS / SEDIMENT CAPACITY, FACTORY BUILT-IN FLOW CONTROL, INTEGRAL AIR RELIEF / ANTI-SIPHON / SAMPLING ACCESS, ASME A112.14.3 AND CSA 846.11 CERTIFIED.



2 SANITARY RISER

ALL LABELS AND MARKINGS ON GREASE INTERCEPTOR (FOG CONTROL DEVICES) REMAIN VISIBLE DURING AND AFTER INSTALLATION.

THE SAMPLING MANHOLE AND GREASE INTERCEPTOR SHALL BE ACCESSIBLE AT ALL TIMES, MINIMUM 3 FT. HORIZONTAL, 4 FT. VERTICAL CLEARANCE SHALL BE PROVIDED.

FIXTURE TYPE	QTY.	L	W	D	CU. IN.	GALLONS/PER FIXTURE	% FULL	DRAINAGE LOAD
MOP SINK	1	24	24	10	5760	25	75	18.75
3 COMP SINK	1	18	12	14	3024	39	75	29.25
HAND SINK S1	2	14	12	6	1008	4.4	75	6.6
HAND SINK S2	1	10	14	6	840	3.6	75	2.7
FLOOR SINK	2	14	12	6	1008	4.4	75	6.6
TOTAL GALLONS								63.9
TOTAL FIXTURE FLOW RATE GAL/MIN.								63.9

GREASE INTERCEPTOR TO BE 75 GAL/MIN. SCHIER GB-75-2 SERIES

PLUMBING NOTES

- NOTES APPLY TO ALL PLUMBING SHEETS.
- EACH CONTRACTOR IS RESPONSIBLE FOR HAVING THOROUGH KNOWLEDGE OF ALL DRAWINGS AND SPECIFICATIONS AS THEY RELATE TO THIS WORK. NO ADDITIONAL COMPENSATION SHALL BE ALLOWED DUE TO LACK OF THIS KNOWLEDGE.
- PROVIDE ALL MATERIALS FOR A COMPLETE INSTALLATION IN ALL RESPECTS READY FOR INTENDED USE AND IN STRICT ACCORDANCE WITH STATE AND LOCAL CODES AND MANUFACTURER'S RECOMMENDATIONS.
- COORDINATE SEWER AND WATER CONNECTIONS WITH CIVIL AND A/E. PROVIDE PRESSURE REDUCING VALVE AND BACKFLOW PREVENTER AS SHOWN OR REQUIRED BY A/E. VERIFY INVERT AND SLOPE OF INCOMING SANITARY SEWER BEFORE TRENCHING.
- REFER TO RISER DIAGRAMS AND PLUMBING FIXTURE SCHEDULE FOR ALL PIPING AND PIPE SIZES NOT SHOWN ON PLAN.
- SANITARY AND STORM SEWER PIPING SHOWN IS BASED ON 1/4" PER FOOT FALL FOR ALL PIPE SMALLER THAN 3" DIAMETER AND 1/8" PER FOOT FALL FOR PIPE 3" DIAMETER AND LARGER.
- ALL SEWER PIPING BELOW SLAB TO BE 2" DIAMETER MINIMUM.
- PROVIDE ACCESS DOORS TO ALL CONCEALED VALVES AND CLEAN-OUTS; AND NOT ABOVE AN ACCESSIBLE CEILING.
- PROVIDE TRAP SEAL PRIMERS AND 1/2" COPPER TUBING CONNECTION TO ALL FLOOR DRAINS AS SHOWN OR AS REQUIRED BY A/E. CONTRACTOR SHALL VERIFY REQUIREMENTS.
- INSTALL VTR, EXHAUST FANS, AND FLUES A MINIMUM 5'-0" FROM PARAPET OR OUTSIDE WALL AND 10'-0" MINIMUM FROM EQUIPMENT WITH OUTSIDE AIR INTAKE.
- INSTALL WATER PIPE INSIDE OF EXTERIOR WALL INSULATION TO PREVENT FREEZING.
- WHEN DEEP FROST LOCATIONS ARE ENCOUNTERED, ROUTE SANITARY LINES UNDER BUILDING AS MUCH AS POSSIBLE.
- PROVIDE PVC SLEEVE FOR ALL COLD/HOT WATER FLOOR PIPE PENETRATIONS. MAKE SLEEVE LARGE ENOUGH FOR INSULATION. SEAL WITH GRAY MASTIC AND ENSURE OF NO WATER PENETRATIONS.
- PROVIDE AND INSTALL WATTS BA VACUUM BREAKER ON ANY THREADED EXTERIOR OR INTERIOR FAUCETS.
- ALL WATER SHUT-OFF VALVES SHALL BE "BALL LOCK" TYPE. PROVIDE SHUT-OFF VALVES AT EACH TERMINATION POINT OF ASSOCIATED EQUIPMENT.
- PROVIDE SEISMIC BRACING BASED ON APPROPRIATE SEISMIC ZONE REQUIREMENTS PER LOCAL AND NATIONAL CODES. CONTRACTOR'S RESPONSIBILITY INCLUDES STRUCTURAL ENGINEER'S CERTIFICATION ON DETAILS SUBMITTED FOR PERMITTING.

3 08/26/20 PEER COMMENTS  
1 04/27/20 PEER COMMENTS  
NO DATE REMARKS



7-ELEVEN  
STORE #41559

1245 S. VOLUSIA AVENUE  
Orlando, FL 32763

PROJECT NO: 2019.0743  
DATE: APRIL 7, 2020

P1.0  
PLUMBING SANITARY

CHECKED: JL DRAWN: ROH