

SEAL:  
 THIS DOCUMENT IS NOT  
 FOR REGULATORY  
 APPROVAL, PERMITTING,  
 OR CONSTRUCTION.

FOR BIDDING ONLY  
 09/03/2020

NO DATE REMARKS  
 REVISIONS

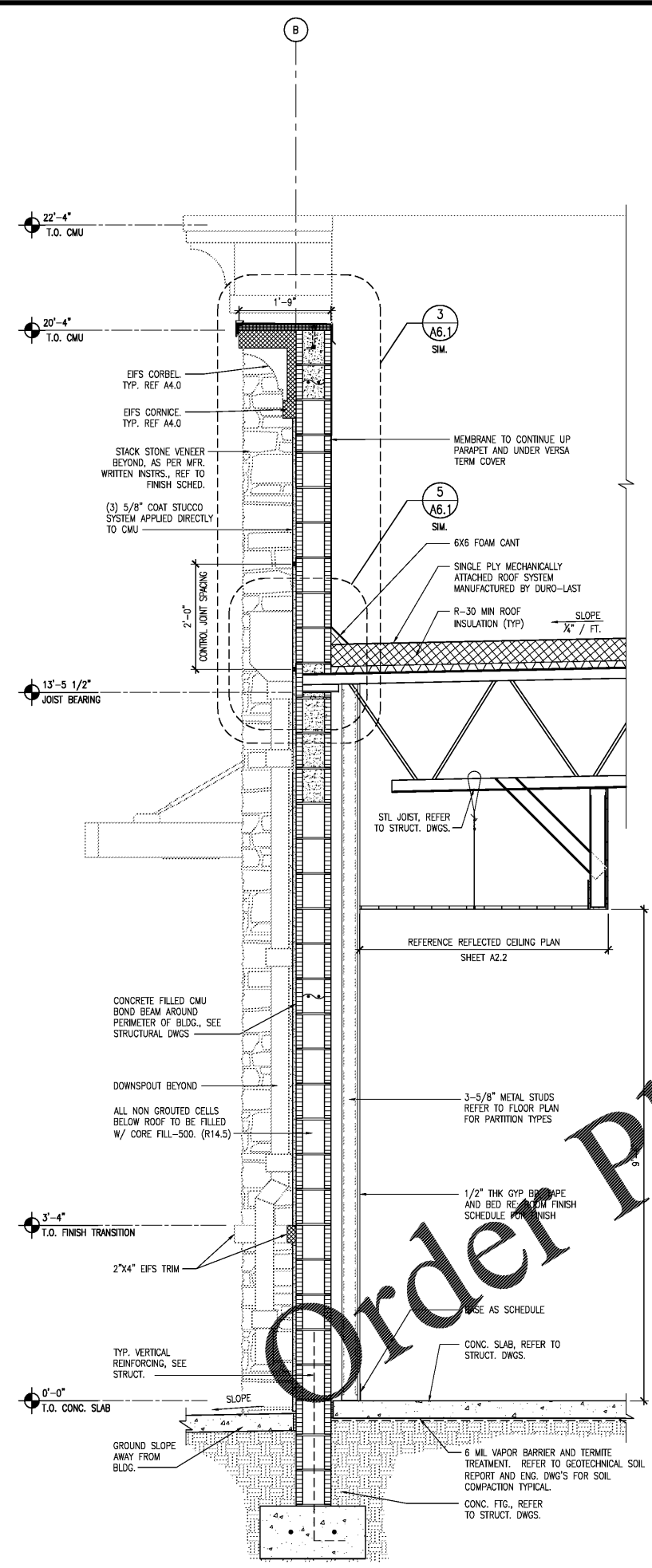


7-ELEVEN  
 STORE #41559  
 1245 S. VOLUSIA AVENUE  
 Orange City, FL 32763

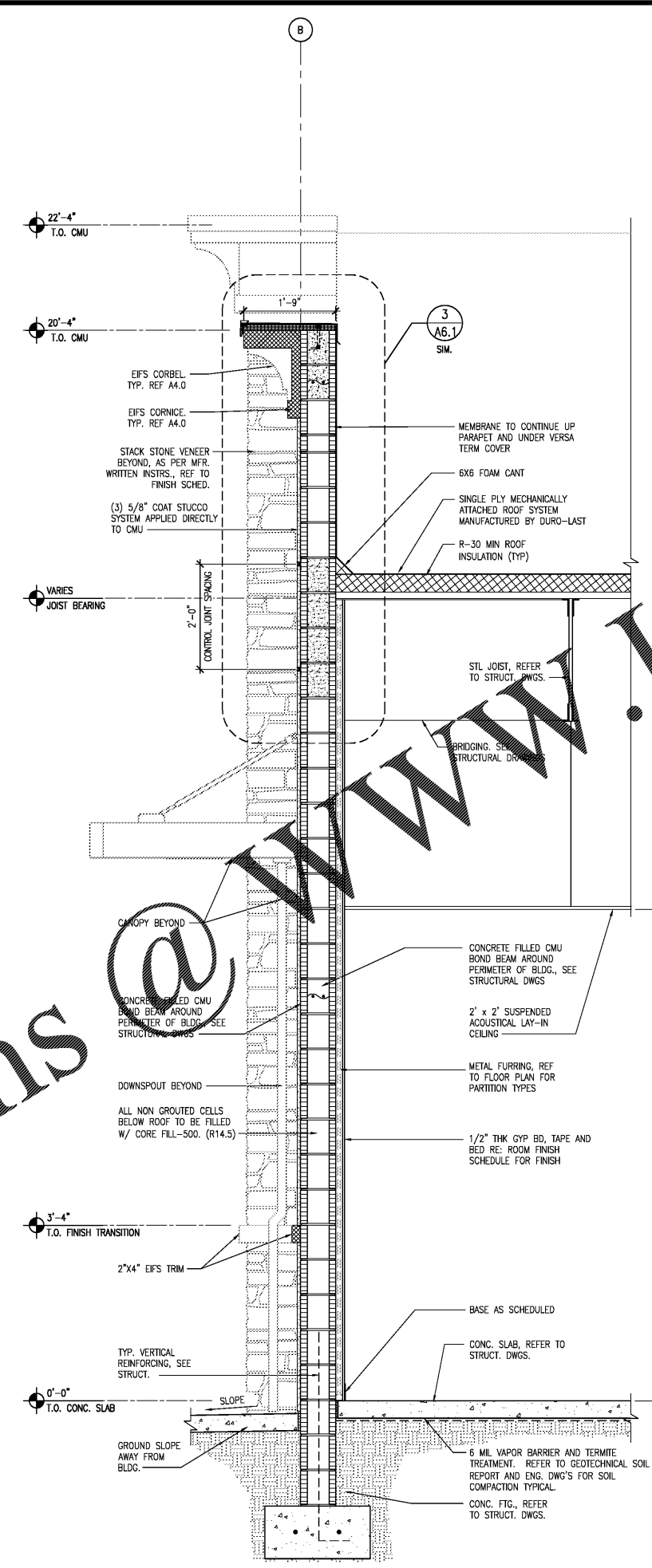
PROJECT NO: 2019.0743  
 DATE: APRIL 7, 2020

A6.1  
 WALL SECTIONS AND  
 DETAILS

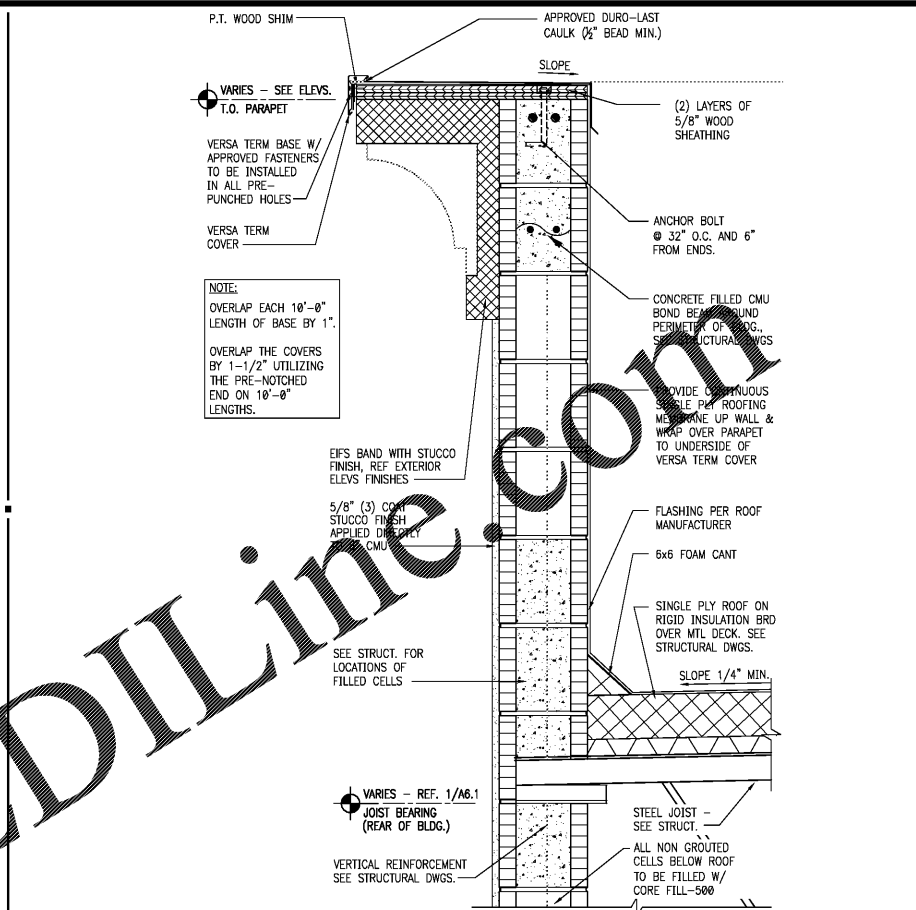
CHECKED: RW DRAWN: JM  
 JENARS - 09/01/2020 11:26:10 AM



1 WALL SECTION 3/4" = 1'-0"



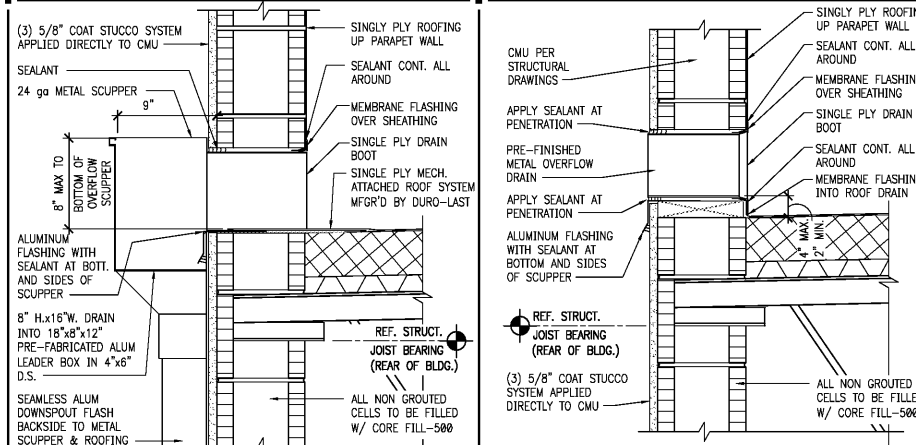
2 WALL SECTION 3/4" = 1'-0"



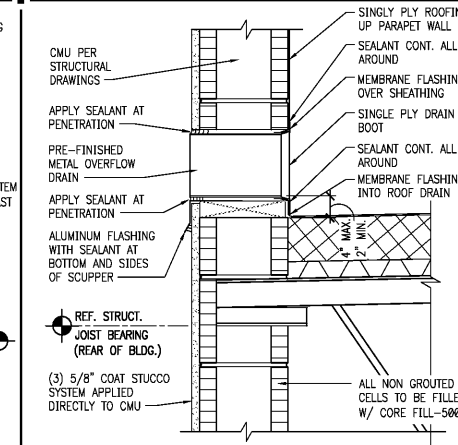
3 CMU PARAPET DETAIL 1 1/2" = 1'-0"

INTERIOR NON-LOAD BEARING PARTITION HEADER SCHEDULE

HEADER LENGTH	HEADER MEMBERS	MINIMUM EFFECTIVE PROPERTIES PER STUD
2' TO 6'	(2) 6" x 18 GAUGE	Ix = 2.042 Sx = 0.670
6' TO 8'	(2) 6" x 16 GAUGE	Ix = 2.518 Sx = 0.839
8' TO 10'	(2) 6" x 14 GAUGE	Ix = 3.094 Sx = 1.031
10' TO 12'	(2) 8" x 18 GAUGE	Ix = 4.134 Sx = 1.033
12' TO 14'	(2) 8" x 16 GAUGE	Ix = 5.110 Sx = 1.277
14' TO 16'	(2) 8" x 14 GAUGE	Ix = 6.303 Sx = 1.576
16' TO 18'	(2) 10" x 14 GAUGE	Ix = 12.325 Sx = 2.456
18' TO 26'	(2) 12" x 16 GAUGE	Ix = 15.730 Sx = 2.334



5 SCUPPER DETAIL 1 1/2" = 1'-0"



6 OVERFLOW DETAIL 1 1/2" = 1'-0"

Order Plans @ WWW.LDILine.com