

SEAL:

THIS DOCUMENT IS NOT
FOR REGULATORY
APPROVAL, PERMITTING,
OR CONSTRUCTION.

FOR BIDDING ONLY
09/03/2020

1 04/27/20 PEER COMMENTS
NO. DATE REMARKS
REVISIONS



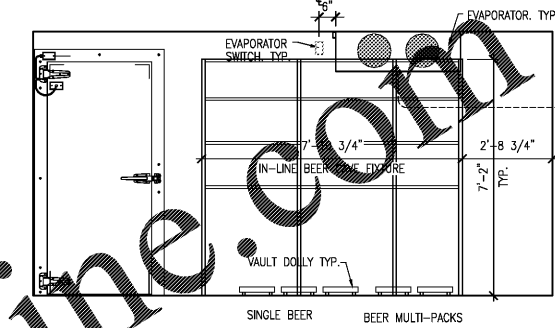
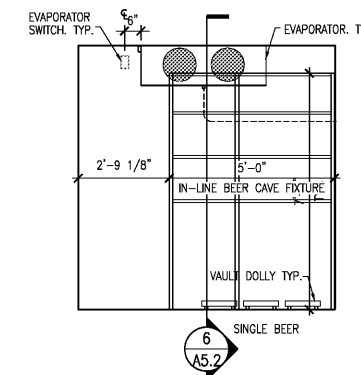
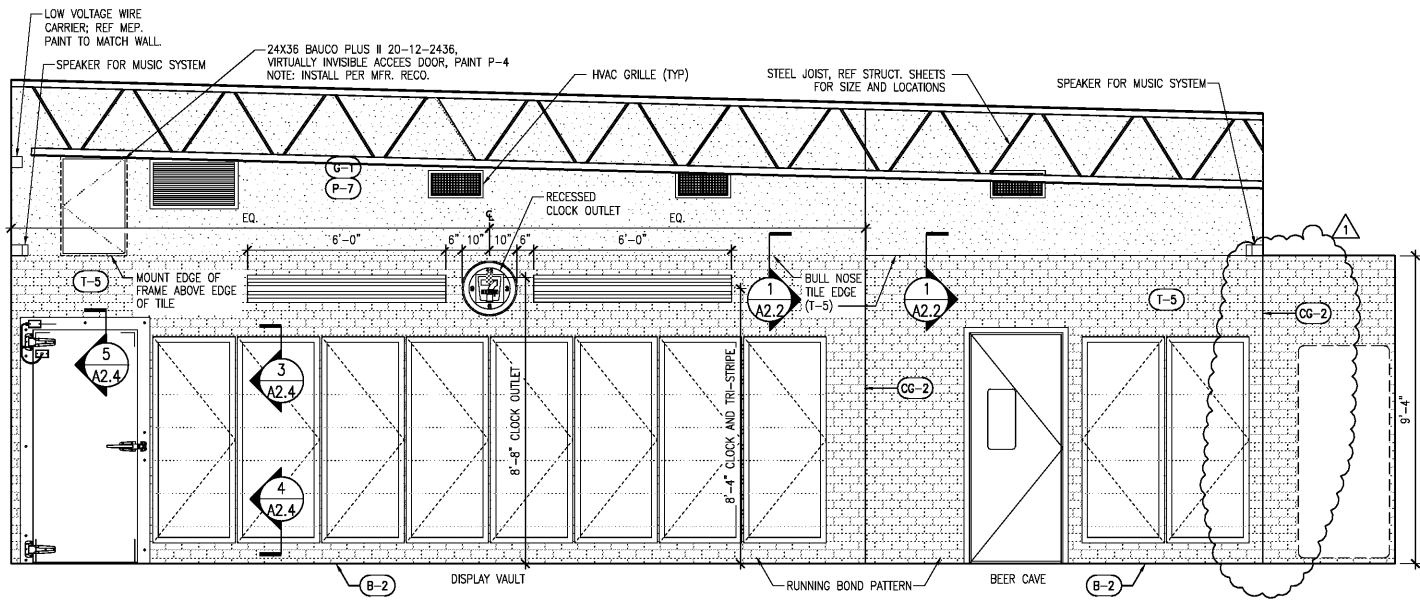
7-ELEVEN
STORE #41559

1245 S. VOLUSIA AVENUE
Orange City, FL 32763

PROJECT NO: 2019.0743
DATE: APRIL 7, 2020

A5.2
INTERIOR ELEVATIONS

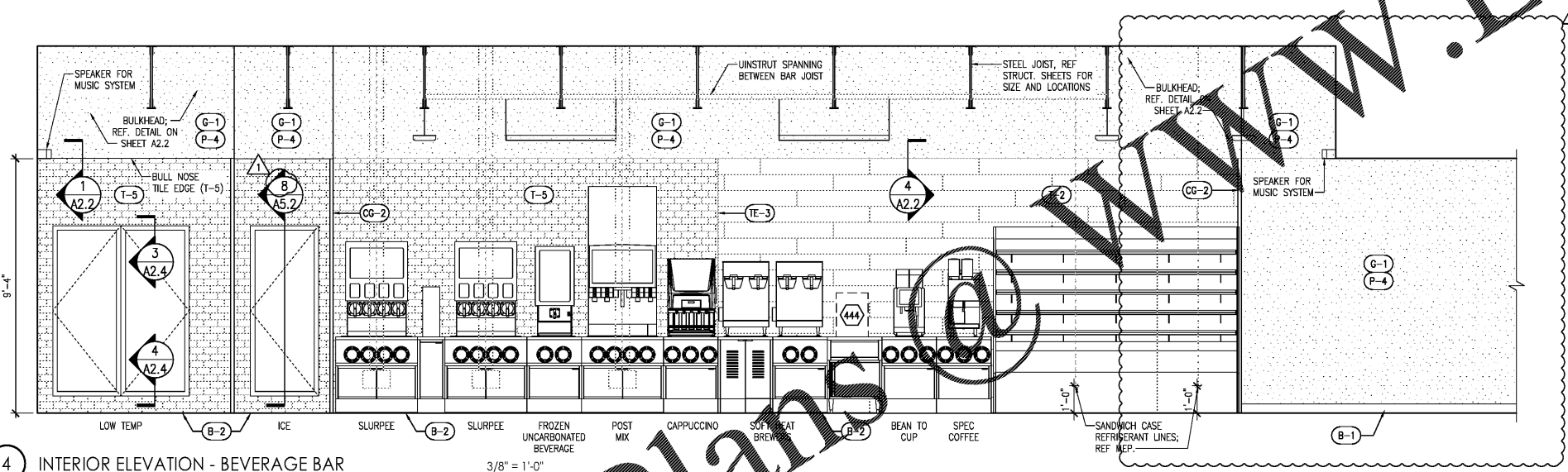
CHECKED: RW DRAWN: JM



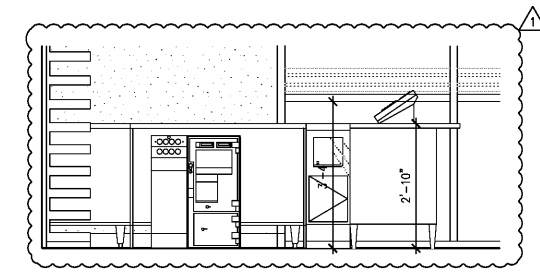
1 INTERIOR ELEVATION - COOLER VAULT 3/8" = 1'-0"

2 INT. ELEVATION OF BEER CAVE 8" = 1'-0"

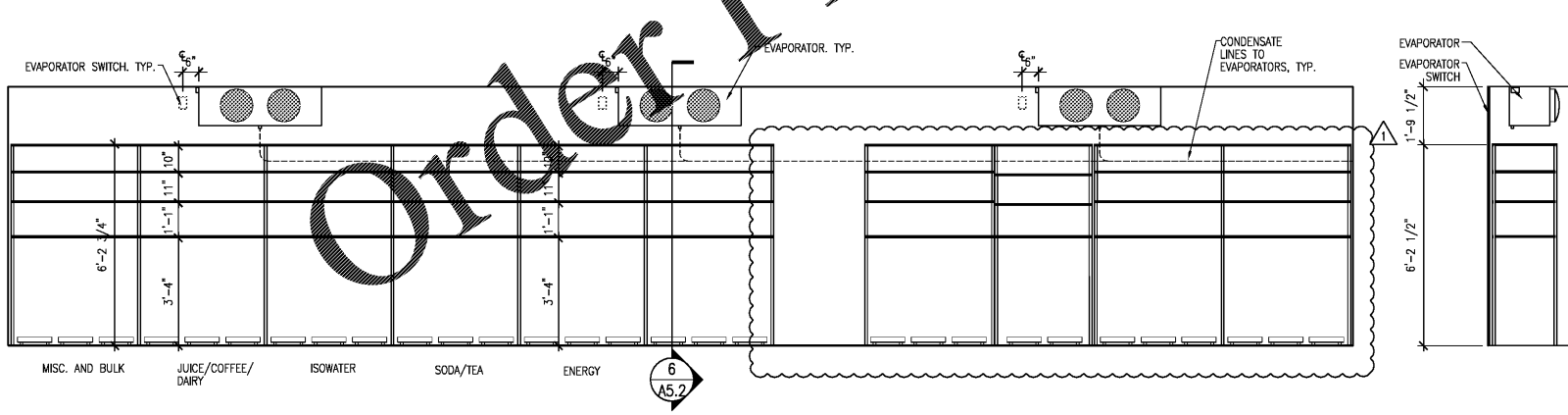
3 INT. ELEVATION OF BEER CAVE 3/8" = 1'-0"



4 INTERIOR ELEVATION - BEVERAGE BAR 3/8" = 1'-0"

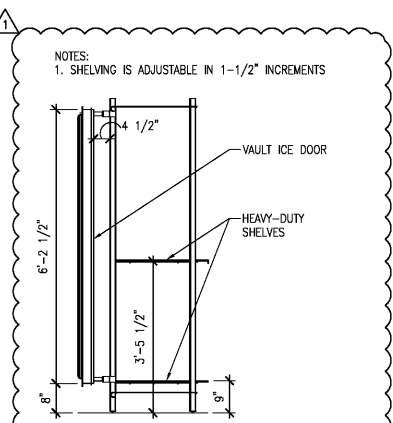


7 INTERIOR ELEVATION - SAFE 1/2" = 1'-0"



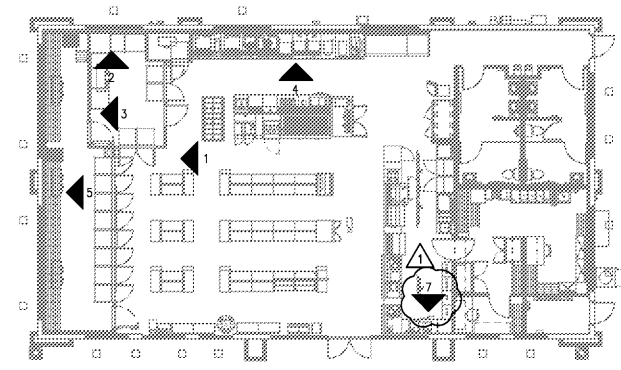
5 INTERIOR ELEVATION - COOLER VAULT 3/8" = 1'-0"

6 INTERIOR ELEVATION OF COOLER 3/8" = 1'-0"



GENERAL NOTES

- A. REFERENCE SHEET A3.0 FOR ALL FINISH SCHEDULE.
- B. REFERENCE ELECTRICAL SHEETS FOR RECEPTACLE LOCATIONS AND HEIGHTS.
- C. ALL COUNTER SHALL BE 34" AFF UNLESS OTHERWISE NOTED.



KEY PLAN

NTS