

SEAL:

BJARNE MADSEN, P.E.  
FL 58683

16733 WINDY LANE  
ORLANDO, FLORIDA 32814  
PH 407.282.4225  
LIC #28029  
PROJECT # IP20-08

FOR BIDDING ONLY  
09/03/2020

NO DATE REMARKS  
REVISIONS



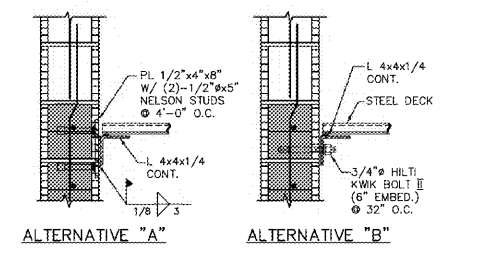
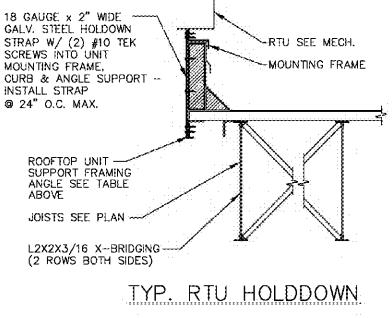
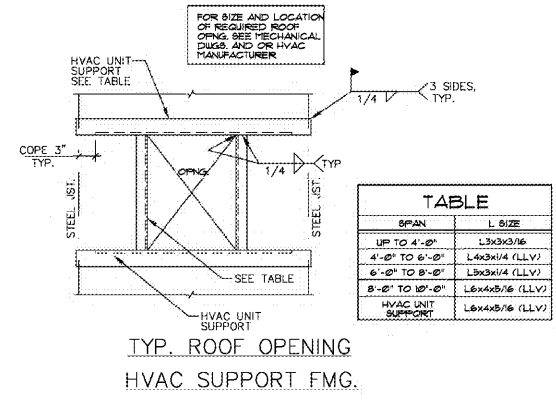
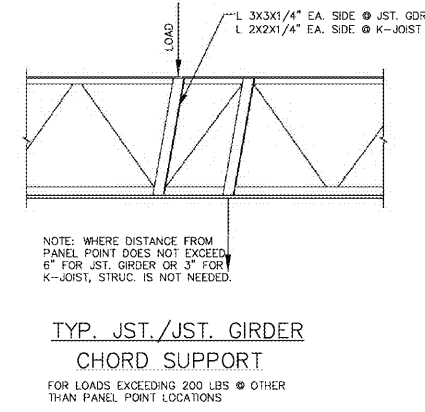
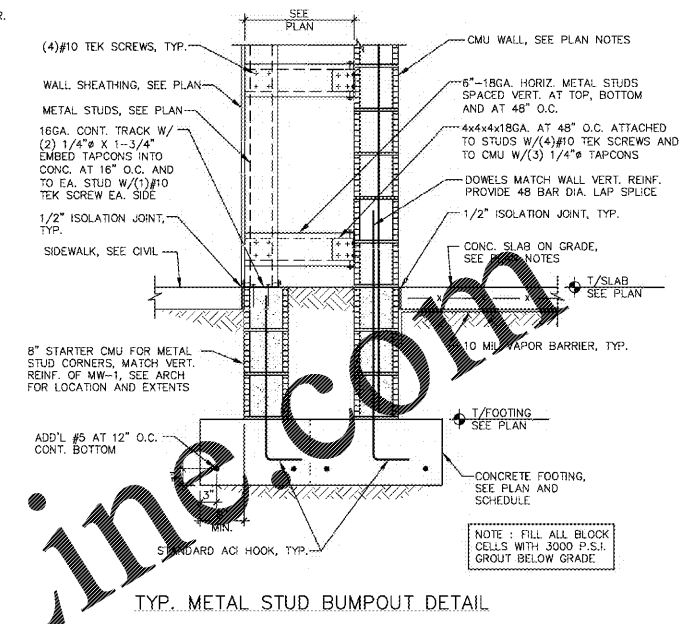
7-ELEVEN  
STORE #41559

1245 S. VOLUSIA AVENUE  
Orange City, FL 32763

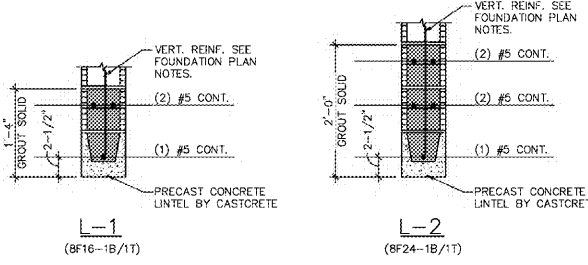
PROJECT NO: 2019.0743  
DATE: MARCH 20, 2020

S4.1  
STRUCTURAL SECTIONS

CHECKED: BM DRAWN: RED



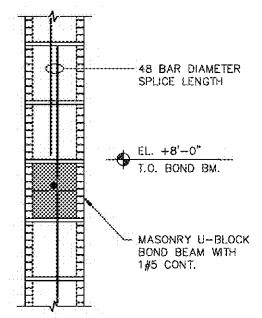
DECK SUPPORT ANGLE ANCHORAGE  
CONTRACTOR'S OPTION  
N.T.S.



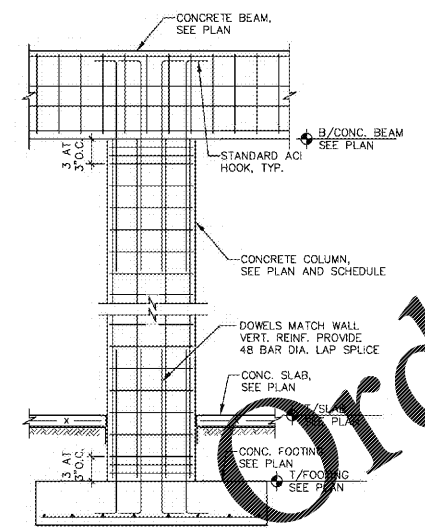
- NOTES:
1. 8" PRECAST LINTELS BY CASTORETE CORPORATION.
  2. SHORE PRECAST LINTEL PER MANUFACTURER RECOMMENDATIONS.
  3. SEE THE ARCHITECTURAL DRAWINGS FOR SIZE AND LOCATION OF ALL OPENINGS.
  4. PROVIDE 8" MINIMUM BEARING EACH END.

8" C.M.U. PRECAST LINTEL SCHEDULE  
N.T.S.

- NOTES:
1. WHERE HEIGHT OF MASONRY WALL SEGMENT EXCEEDS 12'-0", INTERMEDIATE BOND BEAM IS REQUIRED.
  2. BOND BEAM REINFORCEMENT MUST BE CONT. HOOK BARS INTO REINFORCED JAMB AT WALL OPENINGS.
  3. OMIT BOND BEAMS WHERE IT COINCIDES WITH OPENING HEADERS (LINTELS/BEAMS). REINFORCEMENT MUST BE CONTINUOUS AT SUCH LOCATIONS.

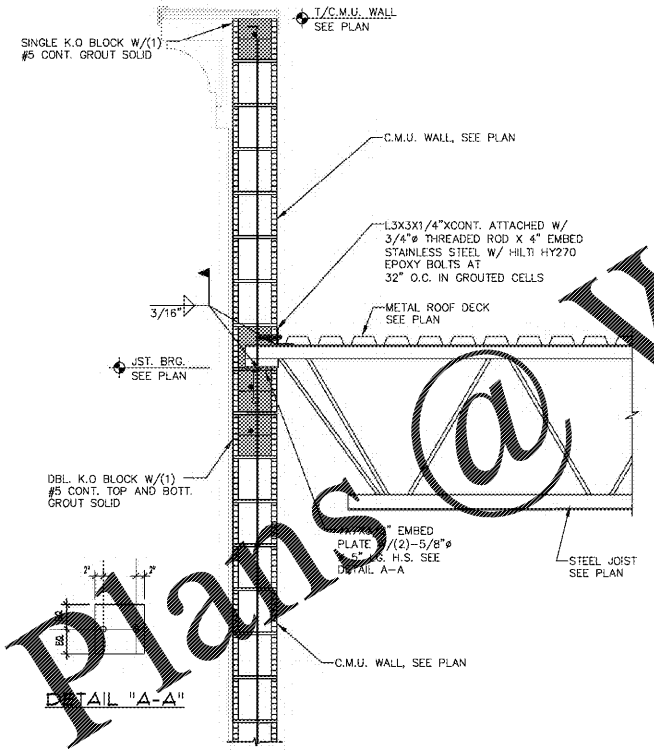


TYPICAL BOND BEAM DETAIL  
N.T.S.

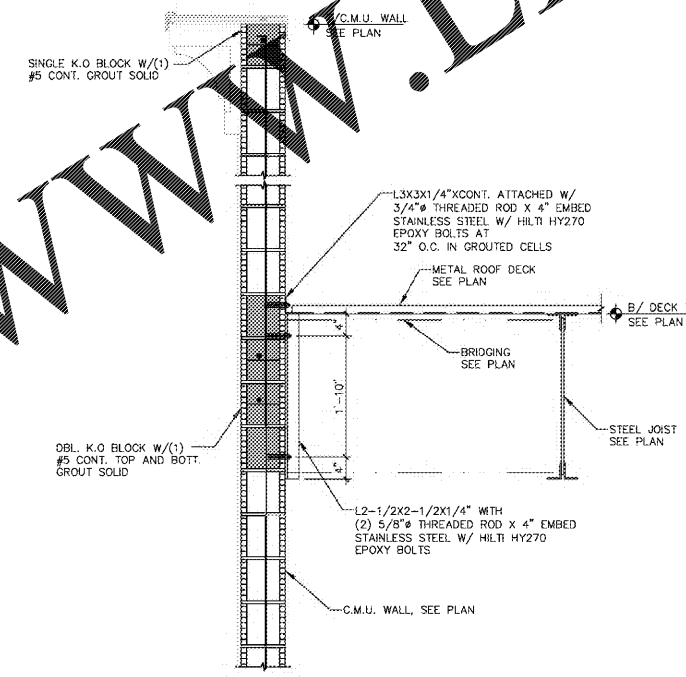


- NOTE:
1. ADD EXTRA TIES IF THE DISTANCE BETWEEN BOTTOM LAYER OF SLAB REINFORCEMENT AND LOWER POINT OF OFFSET BENT IS MORE THAN HALF SCHEDULED TIE SPACING.
  2. WHERE COLUMN IS SPLICED BETWEEN FLOORS, PROVIDE CLASS B TENSION LAP SPLICE.

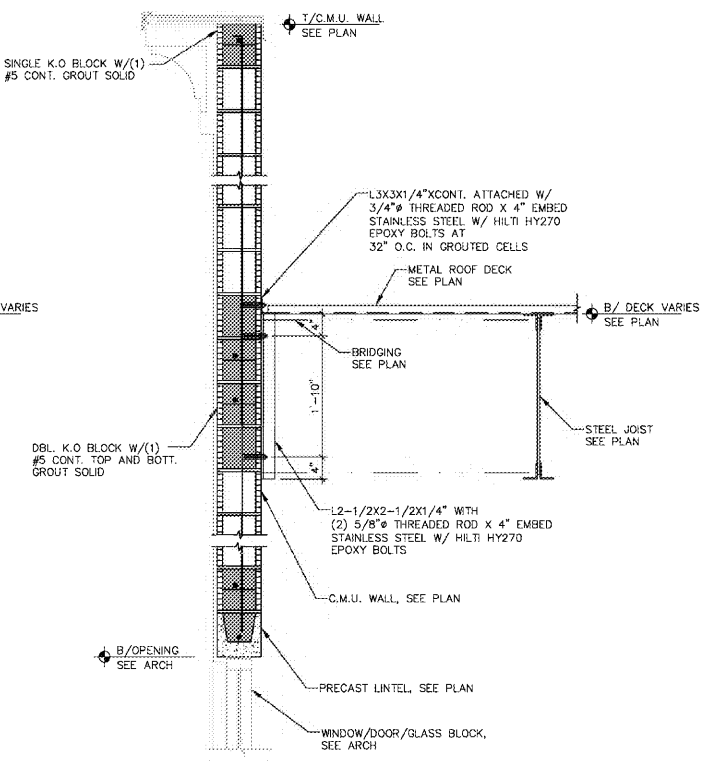
TYPICAL CONCRETE COLUMN AND FOOTING  
N.T.S.



SECTION 1  
3/4"=1'-0" S4.1



SECTION 2  
3/4"=1'-0" S4.1



SECTION 3  
3/4"=1'-0" S4.1

Order Plans @ www.LDILine.com