

DESIGN LOAD SCHEDULE	
(ALL LOADS SHOWN ARE IN POUNDS PER SQ. FT.)	
COMPONENT	ROOF AREA
SYSTEM	25
TOTAL DEAD LOAD	25
TOTAL LIVE LOAD	20
TOTAL LOAD	45

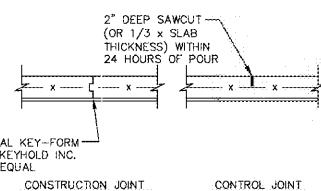
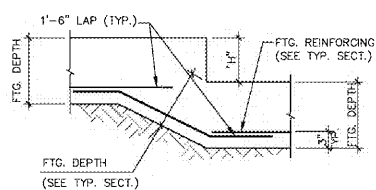
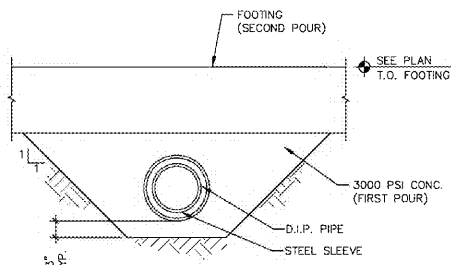
FOOTING SCHEDULE		
MARK	SIZE	REINFORCING
F24-12	2'-0" x 12" X CONT.	(2) #5 CONT. BOTTOM
F70	7'-0" x 7'-0" x 16"	(8) #5 E.W. BOTTOM

CONCRETE COLUMN SCHEDULE				
MARK	SIZE	VERT STL	TIES	TYPE
CC-1	7'-5/8" x 24"	(8) #6	#3 @ 8"	I

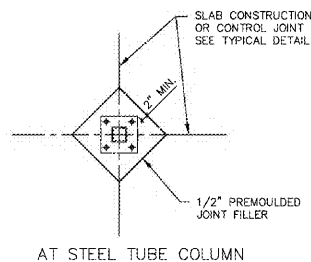
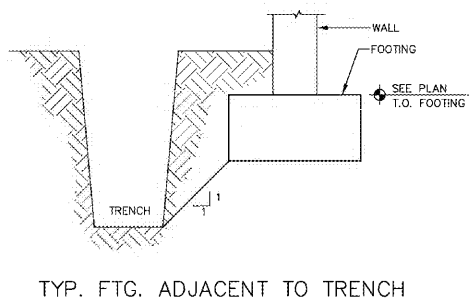
MASONRY WALL SCHEDULE		
MARK	THICKNESS	REINFORCING
MW-1	8" CMU	#6 @ 48" O.C.(CENTERED)
MW-2	8" CMU	#6 @ 8" O.C.(CENTERED)

EFFECTIVE WIND AREA (SQ. FT.)	ROOF WIND PRESSURE (PSF)		
	1	2	3
10	+12.9/-28.1	+12.9/-47.1	+12.9/-71.0
20	+12.9/-27.3	+12.9/-42.1	+12.9/-58.7
50	+12.9/-28.4	+12.9/-35.5	+12.9/-42.7
100	+12.9/-25.7	+12.9/-30.4	+12.9/-30.4

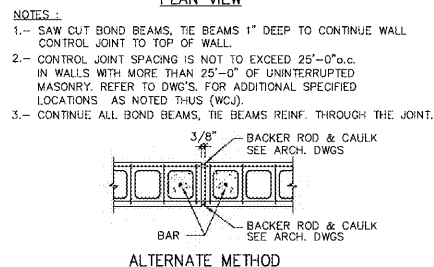
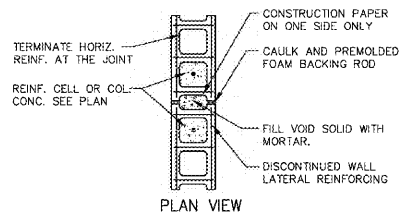
SIZE OF WALL OPENING (SQ. FT.)	DOOR & WINDOW WIND PRESSURE (PSF)	
	4	5
10	+28.1/-30.4	+28.1/-37.5
20	+26.8/-29.2	+26.8/-35.1
50	+25.2/-27.5	+25.2/-31.7
100	+23.9/-26.3	+23.9/-29.2



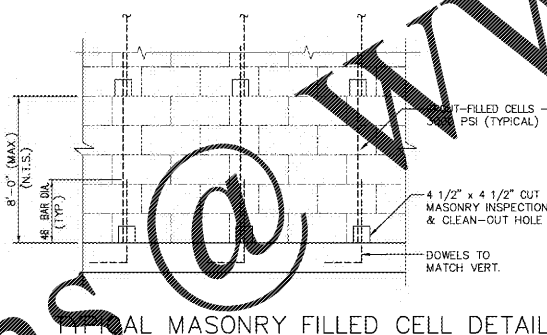
NOTE: CONTROL JOINTS/CONSTRUCTION JOINTS SHALL CREATE PANELS OF 400 SQ. FEET



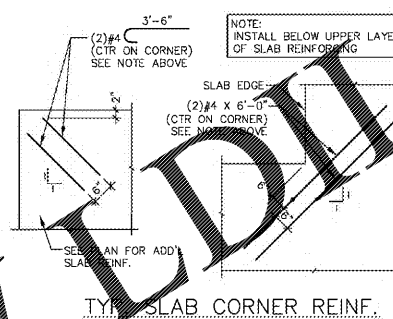
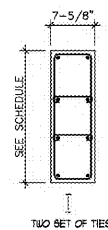
N.T.S.



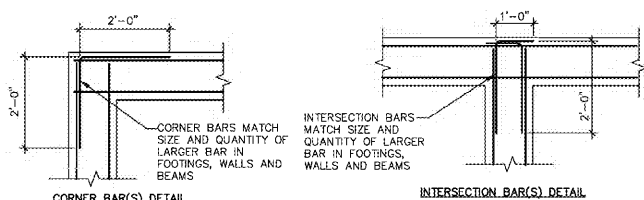
N.T.S.



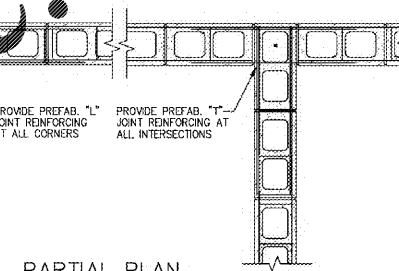
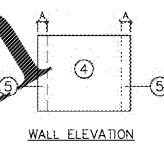
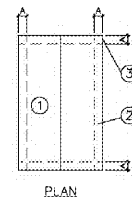
N.T.S.



N.T.S.

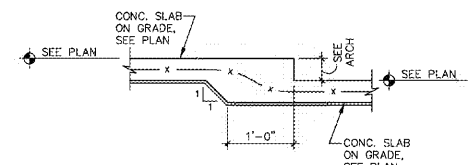


N.T.S.

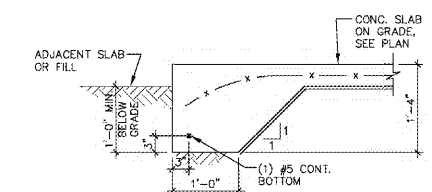


TYPICAL CMU WALL DETAILS

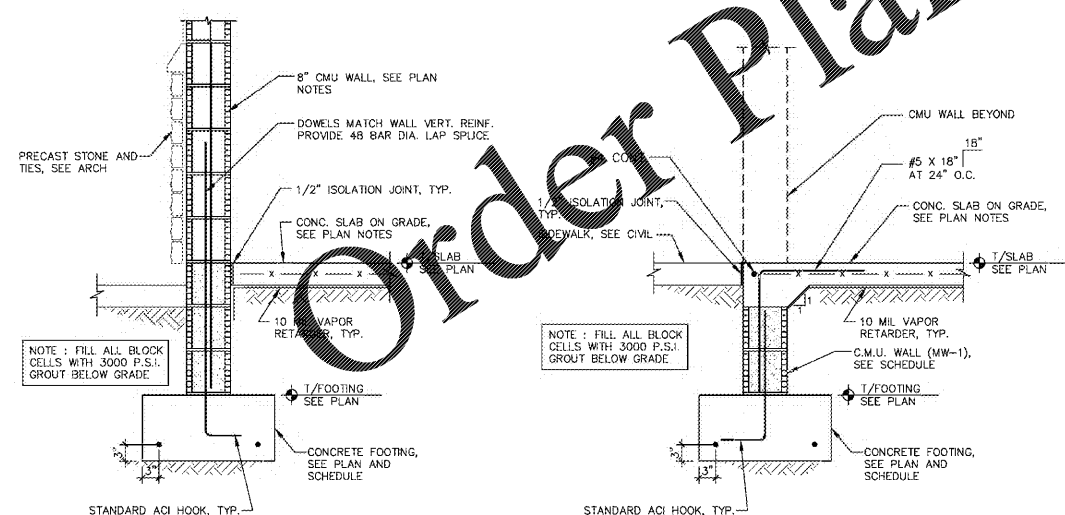
N.T.S.



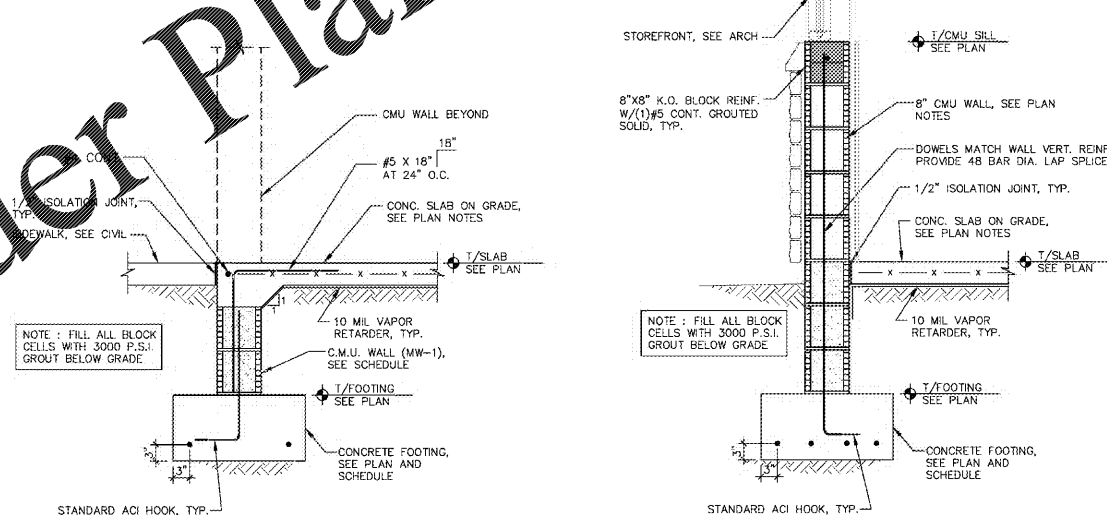
N.T.S.



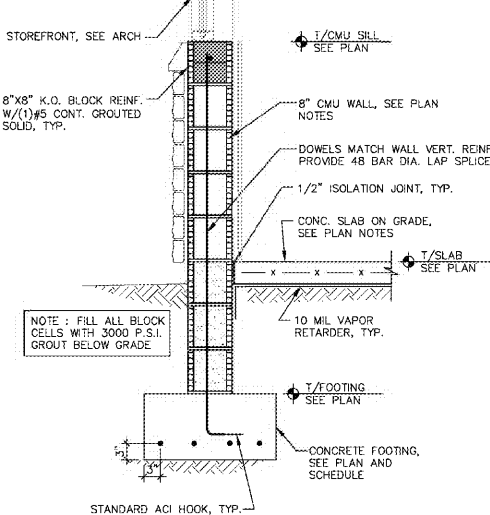
N.T.S.



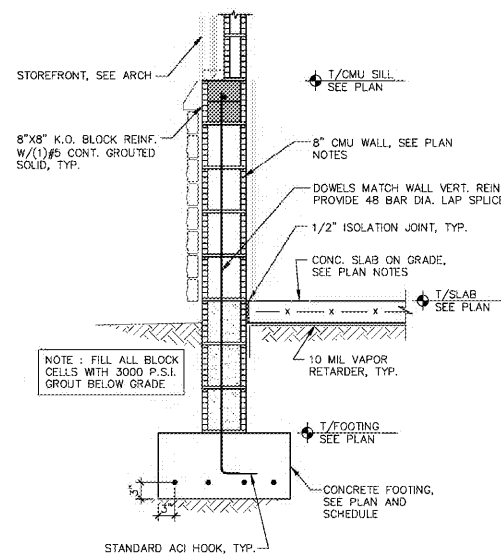
S3.1



S3.1



S3.1



S3.1

IMPORTANCE FACTOR 1.0

IMPORTANCE FACTOR 1.0

NOTES:

- WIND DESIGN PER FBC-2017
- ++ INDICATES WIND PRESSURE
-- INDICATES WIND SUCTION
- WALL DISTANCE A = 6 FT (COMPONENTS AND CLADDING)
- FOR EFFECTIVE WIND AREAS BETWEEN THOSE GIVEN ABOVE, THE LOAD MAY BE INTERPOLATED, OTHERWISE USE THE LOAD ASSOCIATED WITH THE LOWER EFFECTIVE WIND AREA
- MULTIPLY VALUES WITH 1.67 FOR ULT.

NOTES:

- WIND DESIGN PER FBC-2017
- ++ INDICATES WIND PRESSURE
-- INDICATES WIND SUCTION
- WALL DISTANCE A = 6 FT (COMPONENTS AND CLADDING)
- FOR WALLS AND OPENINGS THOSE GIVEN ABOVE, THE LOAD MAY BE INTERPOLATED, OTHERWISE USE THE LOAD ASSOCIATED WITH THE LOWER EFFECTIVE WIND AREA
- MULTIPLY VALUES WITH 1.67 FOR ULT.

SEAL:

BJARNE MADSEN, P.E.
FL 58683

16733 BURNING LANE
ORLANDO, FLORIDA 32814
PH 407.282.4225
LIC #28029
PROJECT # IP20-08

FOR BIDDING ONLY
09/03/2020

NO DATE REVISIONS



7-ELEVEN
STORE #41559

1245 S. VOLUSIA AVENUE
Orange City, FL 32763

PROJECT NO: 2019.0743
DATE: MARCH 20, 2020

S3.1
TYPICAL DETAILS AND
SECTIONS

CHECKED: BM DRAWN: RED