

FOR BIDDING ONLY
09/03/2020

J. 08/28/20 PEER COMMENTS
NO. DATE REMARKS



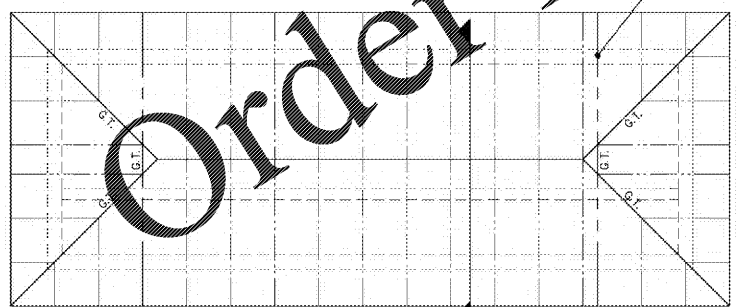
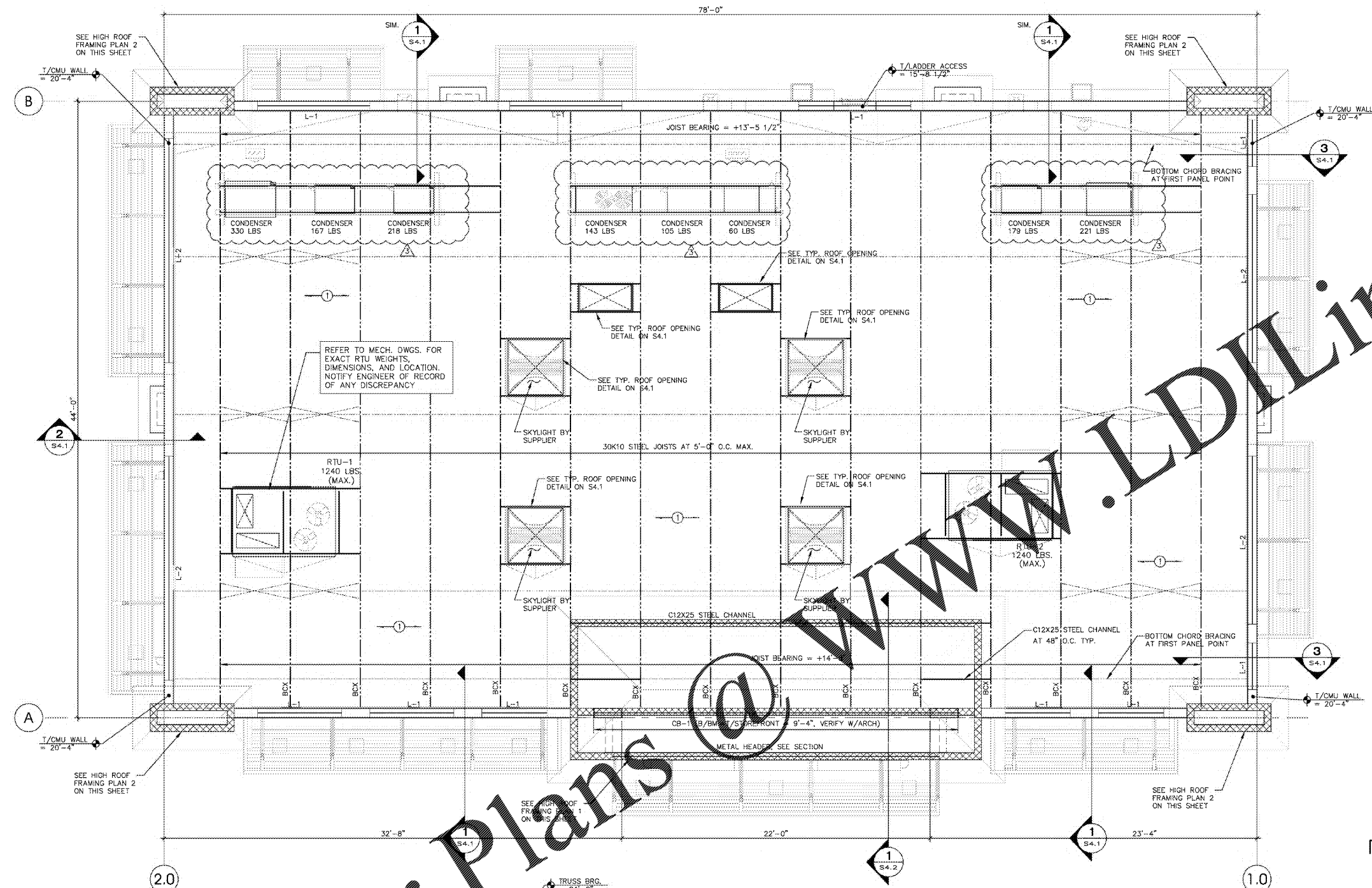
7-ELEVEN
STORE #41559

1245 S. VOLUSIA AVENUE
Orange City, FL 32763

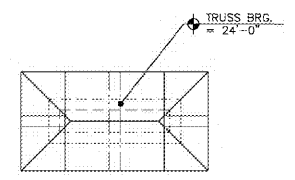
PROJECT NO: 2019.0743
DATE: MARCH 20, 2020

S2.1
ROOF FRAMING PLAN

CHECKED: BM DRAWN: RED



HIGH ROOF FRAMING PLAN 1 1/4" = 1'-0" NORTH



HIGH ROOF FRAMING PLAN 2 1/4" = 1'-0" NORTH

ROOF FRAMING PLAN 1/4" = 1'-0" NORTH

- ROOF FRAMING NOTES:**
- 1) SEE PLAN FOR JOIST BEARING ELEVATION.
 - 2) OPEN WEB STEEL JOISTS SHALL CONFORM TO THE REQUIREMENTS OF THE LATEST EDITION OF THE SPECIFICATION OF THE STEEL JOIST INSTITUTE. BOTTOM CHORDS FOR K SERIES JOISTS SHALL BE ANGLES OR TEES. SEE STRUCTURAL NOTES FOR BRIDGING REQUIREMENTS. CENTER JOISTS ON COLUMNS AND SPACE A MAXIMUM OF 5'-0" O.C. MAX. U.N.O.
 - 3) —①— ROOF METAL DECK SHALL BE 1 1/2" TYPE B 22 GAGE GALVANIZED. ATTACH DECK TO SUPPORTS WITH 5/8" PUDDLE WELDS WITH USING A 36/5 PATTERN AND AT 6" O.C. AT DECK EDGE. FASTEN SIDE LAPS WITH (3) #10 TEK SCREW BETWEEN EACH SUPPORT.
 - 4) JOIST BRIDGING SHALL BE PER JOIST MANUFACTURER'S RECOMMENDATIONS.
 - 5) SEE ARCH FOR DIMENSIONS NOT SHOWN.
 - 6) VERIFY RTU WEIGHTS AND LOCATIONS WITH MECH. PRIOR TO FABRICATION AND CONSTRUCTION. SEE SHEET S4.1 FOR TYP ROOF OPENING/HVAC SUPPORT FRAMING DETAIL.
 - 7) L- INDICATES PRECAST LINTEL, SEE SCHEDULE ON S4.1.
 - 8) BCX INDICATES BOTTOM CHORD EXTENSIONS FOR JOISTS.
 - 9) CB-1 INDICATES BX32 CONCRETE BEAM W/(4) #7 BOTTOM-IN 2 LAYERS, (2) #7 TOP, (4) #7 MID AND #3 STIRRUPS AT 8" O.C.

NOTE: VERIFY W/ ARCH. DRAWINGS ALL TOP OF PARAPET ELEVATIONS AND REPORT DISCREPANCIES TO THE ARCHITECT PRIOR TO FABRICATION AND CONSTRUCTION.

NOTE: VERIFY W/ ARCH. DRAWINGS ALL WALL OPENING SIZES AND LOCATIONS AND REPORT DISCREPANCIES TO THE ARCHITECT PRIOR TO FABRICATION AND CONSTRUCTION.

Order Plans @ WWW.LDILine.com