

SEAL:

BJARNE MADSEN, P.E.
FL 58683

16733 WINDY LANE
ORLANDO, FLORIDA 32814
PH 407.282.4225
LIC ES28029
PROJECT # IP20-08

FOR BIDDING ONLY
09/03/2020

NO DATE REMARKS
REVISIONS



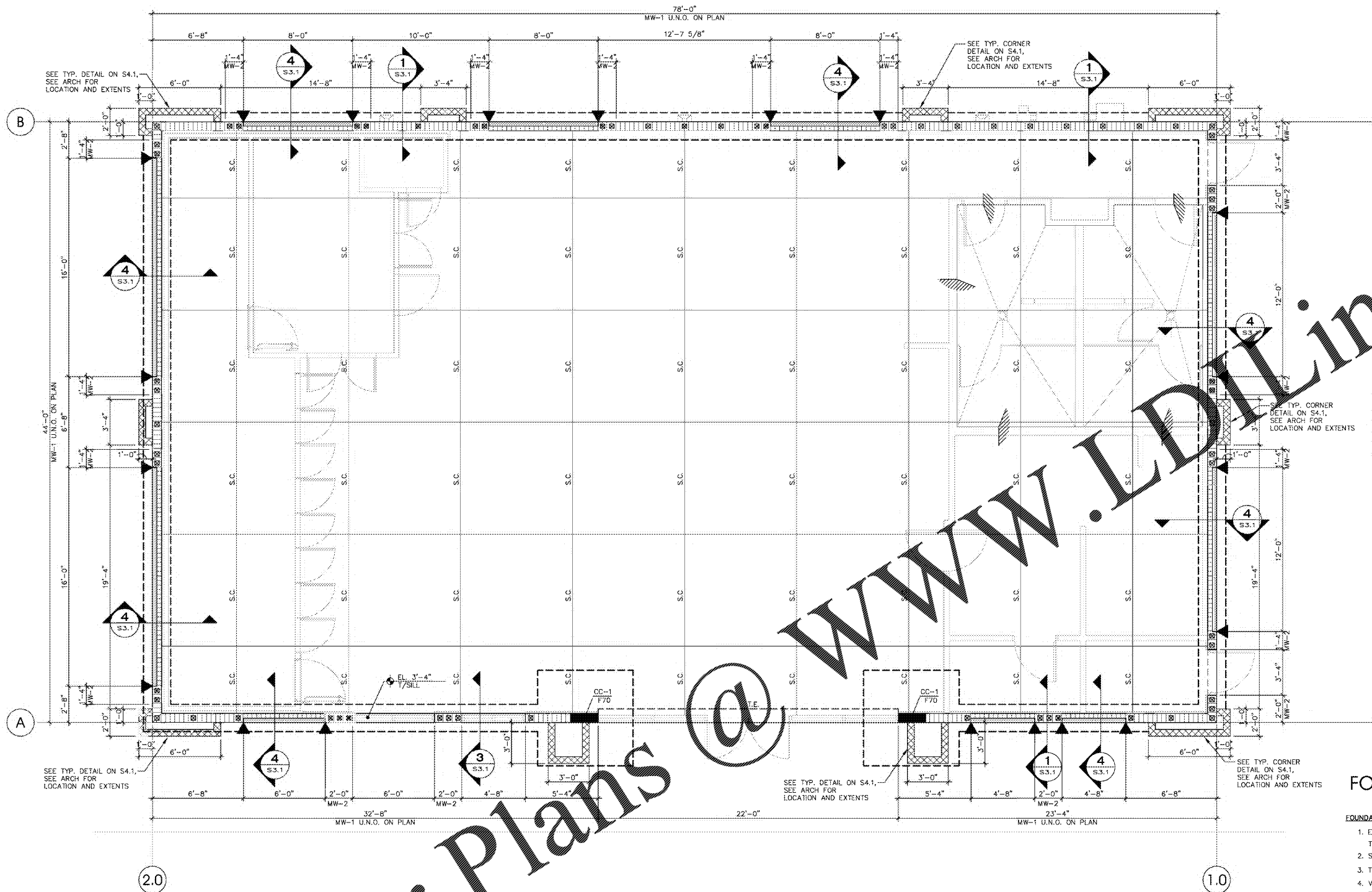
7-ELEVEN
STORE #41559

1245 S. VOLUSIA AVENUE
Orange City, FL 32763

PROJECT NO: 2019.0743
DATE: MARCH 20, 2020

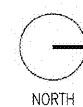
S1.1
FOUNDATION PLAN

CHECKED: BM DRAWN: RED



FOUNDATION PLAN

1/4" = 1'-0"



FOUNDATION NOTES:

1. ELEV. ±0'-0" IS REFERENCE ONLY. SEE CIVIL FOR TRUE NGVD ELEVATION.
2. S.C. INDICATES SAW CUT SEE S3.1 FOR DETAILS.
3. TOP OF FOOTING ELEVATION = -2'-0" BELOW GRADE.
4. VERIFY SLOPES AND STEPS WITH ARCH'L PRIOR TO CONSTRUCTION. SEE TYPICAL STEP DETAIL ON S3.1.
5. F## DENOTES CONCRETE FOOTING, SEE SCHEDULE ON S3.1.
6. [Hatched Box] INDICATES FILLED CELL. ALL MASONRY WALLS ARE MW-1 U.N.O., SEE SCHEDULE ON S3.1 FOR SIZE AND SPACING OF REBAR.
7. ▼ INDICATES WALL CONTROL JOINT, SEE DETAIL ON S3.1.
8. T.E. DENOTES THICKENED EDGE, SEE DETAIL ON S3.1.
9. SC-# INDICATES STEEL COLUMN SEE SCHEDULE ON S3.1.
10. SEE S3.1 FOR TYPICAL FOUNDATION, WALL AND SLAB DETAILS.
11. C-# INDICATES CONCRETE COLUMN. SEE SCHEDULE ON S3.1. SEE TYPICAL DETAIL ON S4.1.
12. [Cross-hatched Box] INDICATES 6" OR 8" X 18GA. METAL STUDS AT 16" O.C. MAX., SEE TYP. DETAILS ON S4.1. SEE ARCH FOR SIZE, LOCATION AND EXTENTS. USE 5/8" PLYWOOD SHEATHING ATTACH W/#10 TEK SCREWS AT 6" O.C.

Order Plans @

www.LDILine.com

COPYRIGHT © 2020 INTERPLAN LLC. RESERVES COPYRIGHT & OTHER RIGHTS RESPECTING THESE DOCUMENTS TO THE ORIGINAL SITE OF PROJECT FOR WHICH THEY WERE PREPARED. REPRODUCTIONS, CHANGES OR ASSIGNMENTS ARE PROHIBITED.