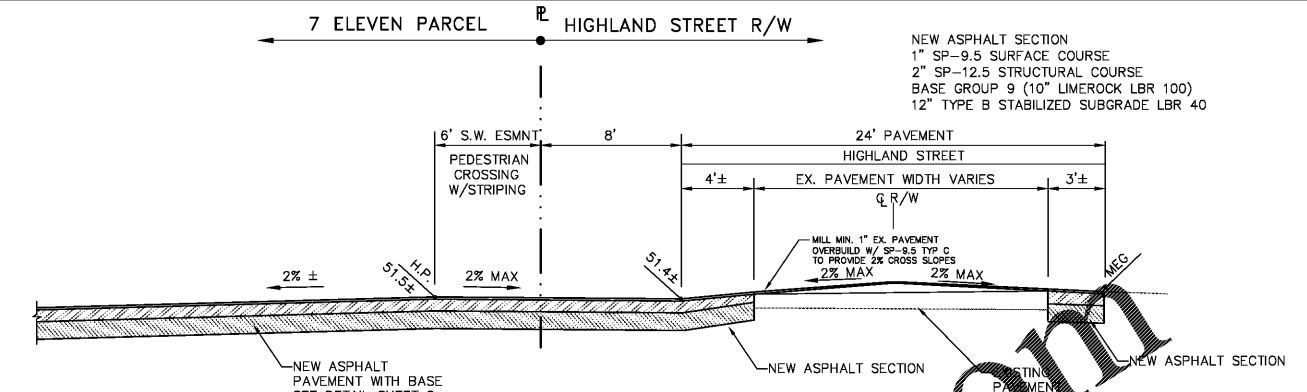
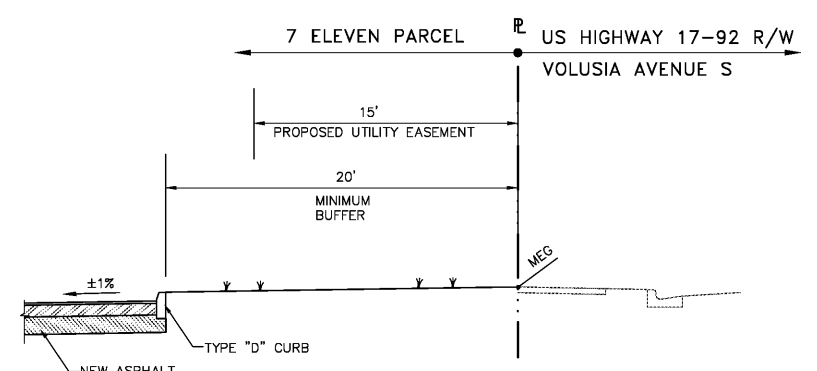


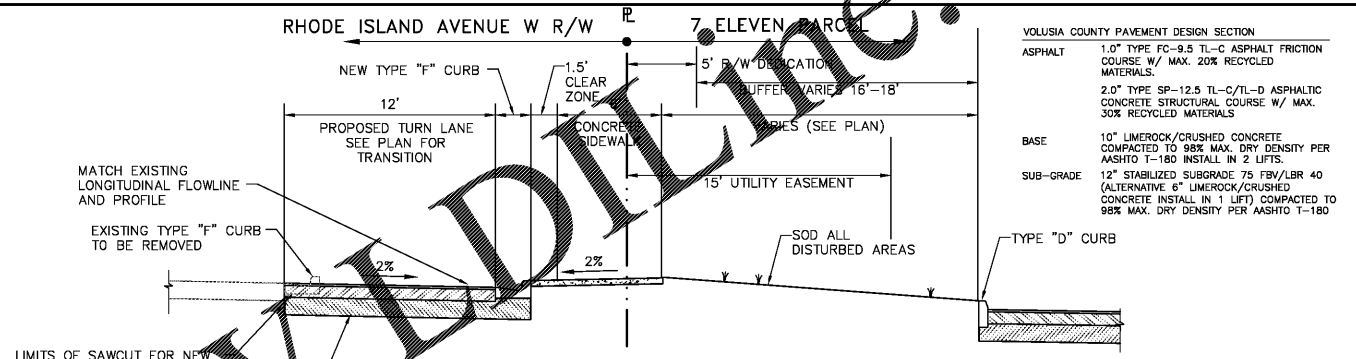
**TYPICAL SECTION SECTION A - A**  
SCALE: 1" = 5'



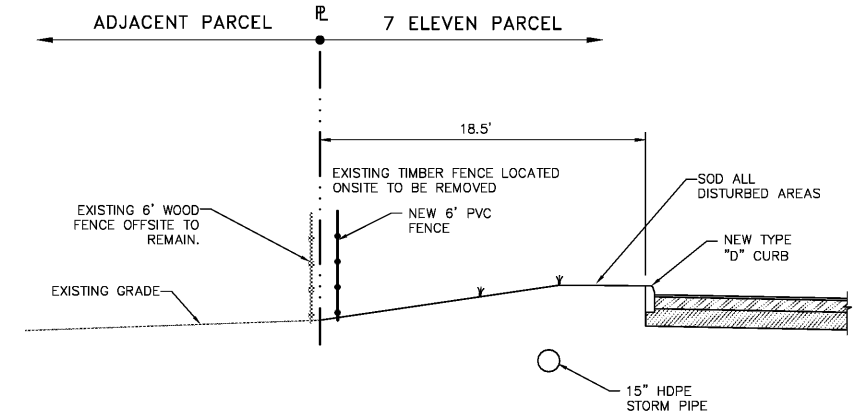
**TYPICAL DRIVEWAY SECTION SECTION B - B**  
SCALE: 1" = 5'



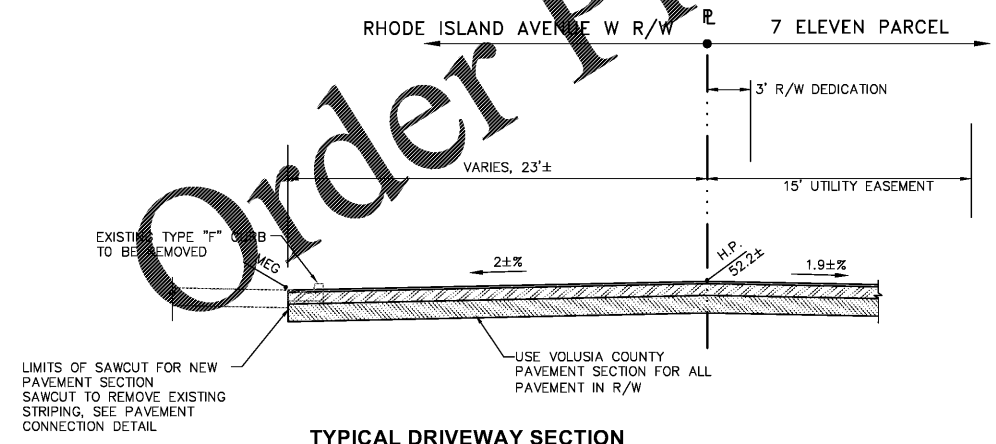
**TYPICAL SECTION SECTION C - C**  
SCALE: 1" = 5'



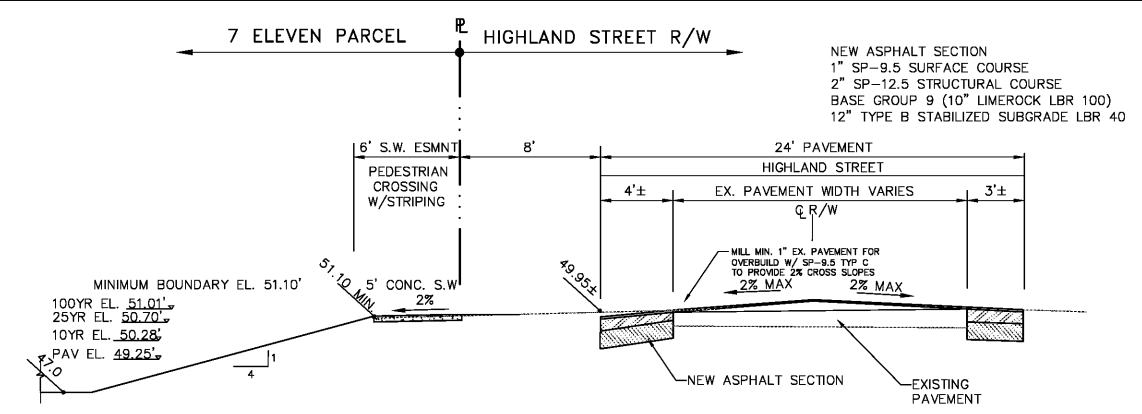
**TYPICAL TURN LANE SECTION SECTION D-D**  
SCALE: 1" = 5'



**TYPICAL SECTION SECTION F-F**  
SCALE: 1" = 5'



**TYPICAL DRIVEWAY SECTION SECTION E-E**  
SCALE: 1" = 5'



**TYPICAL SECTION SECTION G-G**  
SCALE: 1" = 5'

NO.	REVISIONS	DATE	APPL.
1			
2			
3			
4			
5			

**CROSS SECTIONS**  
7 ELEVEN @ VOLUSIA AVE. AND RHODE ISLAND AVE.  
ORANGE CITY, FLORIDA  
RKM DEVELOPMENT

**Engineering Consultants**  
PO Box 450006 • Kissimmee, Florida 34745  
Phone: (407) 738-1979 • Fax: (407) 348-7552

THESE PLANS MAY NOT BE COPIED OR MODIFIED WITHOUT WRITTEN PERMISSION FROM CADAZZ.

SEAL

NOT VALID UNLESS SIGNED & EMBOSSED BY A REGISTERED ENGINEER CADAZZ, LLC CERTIFICATION OF AUTHORIZATION # 28309

SHEET NUMBER  
**12**