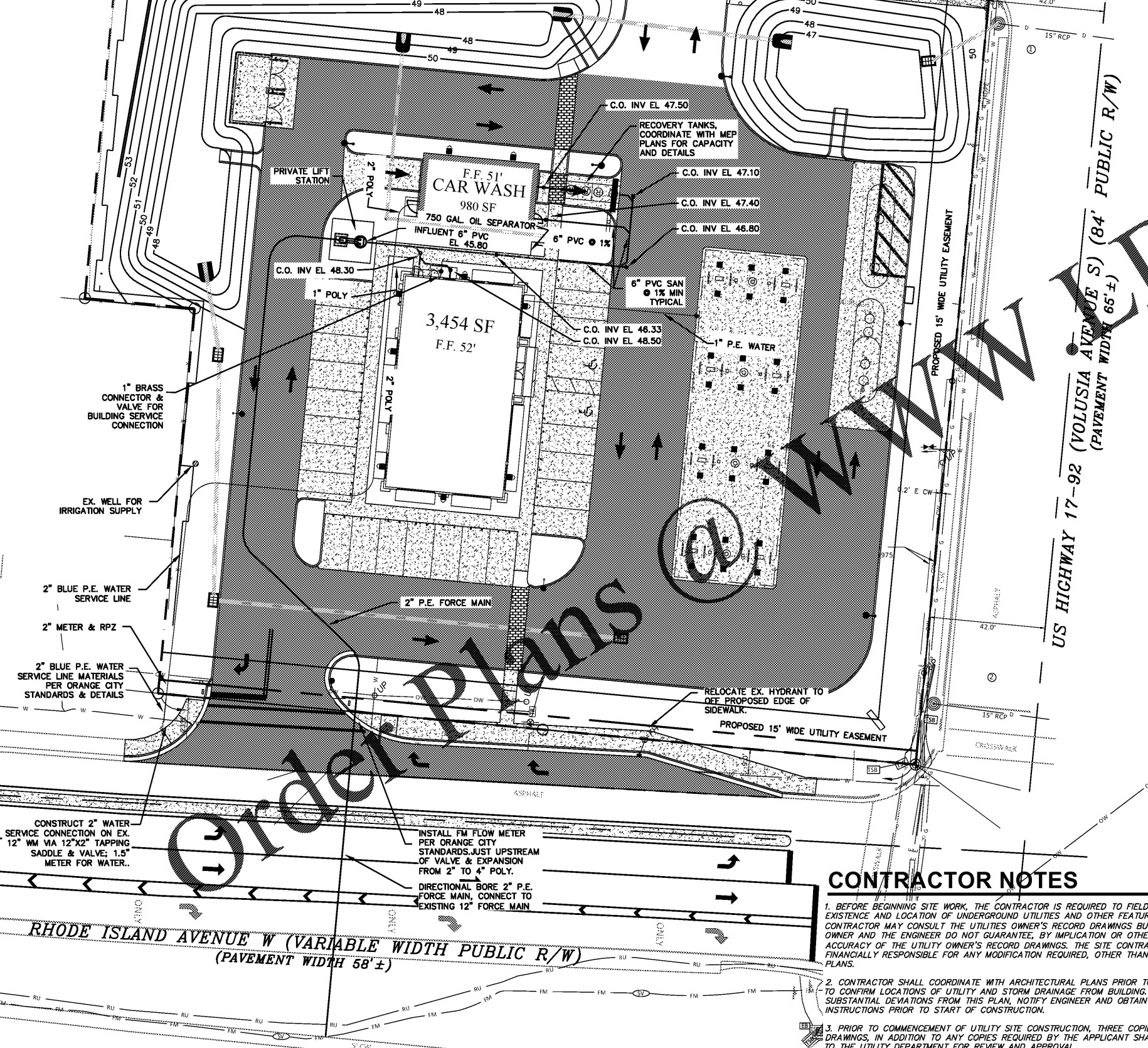


REQUIRED MATERIALS

1. PVC WATER LINES SHALL BE IN ACCORDANCE WITH AWWA C900 AND C905 CLASS 235; FOR LINES BETWEEN 4" AND 12" PIPE SCHEDULE SHALL BE DR 18. ALL FITTINGS SHALL BE IN ACCORDANCE WITH AWWA/ANSI C153/A 21.53.06 CLASS 350. ALL PVC LINES SMALLER THAN 4" SHALL BE SCHEDULE 80 PVC.
2. POLYETHYLENE TUBING SHALL BE IN ACCORDANCE WITH AWWA C901 PE 3608 CLASS 200 AND BE SCHEDULE DR 9 FOR POTABLE WATER LINES. POLY SEWER LINES SHALL BE CLASS 160 DR 11.
3. GRAVITY SEWER SHALL BE IN ACCORDANCE WITH ASTM D-3034 WITH A SCHEDULE SDR 26 WITH JOINTS IN ACCORDANCE WITH ASTM D-3212. LOW PRESSURE PVC SHALL BE IN ACCORDANCE WITH ASTM D2241 AND 1784 SDR 21 CLASS 200.
4. ALL VALVES SHALL BE RESILIENT SEAT GATE VALVES



LEGEND / ABBREVIATIONS

EXISTING	PROPOSED	DESCRIPTION
[Symbol]	[Symbol]	FIRE HYDRANT
[Symbol]	[Symbol]	WATER VALVE-WV
[Symbol]	[Symbol]	BLOWOFF - BO
[Symbol]	[Symbol]	WATER METER - WM
[Symbol]	[Symbol]	SANITARY MANHOLE - MH
[Symbol]	[Symbol]	SANITARY CLEANOUT - CO
[Symbol]	[Symbol]	BACKFLOW PREVENTER - BFP OR REDUCED PRESSURE ASSEMBLY - RPZ
[Symbol]	[Symbol]	WATER MAIN
[Symbol]	[Symbol]	SANITARY MAIN
[Symbol]	[Symbol]	GAS LINE
[Symbol]	[Symbol]	EASEMENT
[Symbol]	[Symbol]	SW
[Symbol]	[Symbol]	LINEAR STREET
[Symbol]	[Symbol]	PVC
[Symbol]	[Symbol]	PVC WITH FLORIDE
[Symbol]	[Symbol]	STEEL DRAIN
[Symbol]	[Symbol]	INVERT
[Symbol]	[Symbol]	PROPOSED SITE LIGHTING (SEE PHOTOMETRIC PLAN)

CONSTRUCTION NOTES

1. CONTRACTOR TO COORDINATE WITH ORANGE CITY STANDARDS & SPECIFICATIONS FOR SCHEDULE OF INSPECTION/INSTALLATION FEE.
2. CONTRACTOR SHALL FURNISH & INSTALL METER & RPZ BFP CONSISTENT WITH ORANGE CITY UTILITIES APPROVED EQUIPMENT.

WATER

1. 2" WATER METER WITH 2" RPZ BFP FOR POTABLE SERVICE
2. IRRIGATION TO BE PER EXISTING WELL LOCATED AT SOUTHWEST AREA OF PROPERTY

SEWER

1. CLEANOUTS, SEE PLAN FOR INVERTS. SEE UTILITY DETAILS FOR SPECIFICATIONS.

ELECTRICAL

1. CONTRACTOR TO COORDINATE W SIGN PROVIDER & INSTALL CONDUIT AND WIRING FOR SIGN POWER, COORDINATE WITH ELECTRICAL PLANS AND PROVIDE POWER TO SIGN.
2. ELECTRICAL CONDUIT PER ARCHITECTURAL PLANS & COORDINATE WITH POWER PROVIDER & CONFIRM WITH OWNER ON PLACEMENT OF ELECTRIC TRANSFORMER PRIOR TO INSTALLATION.
3. CONTRACTOR TO PROVIDE ALL ELECTRICAL CONDUITS AND WIRING FOR SITE POWER AND LIGHTING COORDINATE WITH ARCHITECTURAL PLANS FOR POLE HEIGHT AND LIGHTING SPECIFICATIONS, POWER TO GRINDERS STATION SHALL BE INDEPENDENT FROM SITE POWER.
4. CONTRACTOR TO COORDINATE WITH LOCAL SERVICE PROVIDERS FOR INSTALLING CONDUIT FOR CABLE, PHONE AND INTERNET SERVICE.
5. CONTRACTOR SHALL PROVIDE POWER SUPPLY TO THE IRRIGATION CONTROLLER THROUGH THE HOUSE PANEL.
6. CONTRACTOR TO PROVIDE SLEEVING UNDER PAVED AREAS FOR IRRIGATION WATER AND COORDINATE WITH POWER, PHONE AND CABLE ON CONDUIT REQUIREMENTS PRIOR TO BASE INSTALLATION.
7. CONTRACTOR TO PROVIDE 4" SLEEVING UNDER PAVED AREAS TO ACCOMMODATE IRRIGATION & COORDINATE WITH LANDSCAPE PLANS.
8. NO LANDSCAPING SHALL BE PLANTED IN SUCH A MANNER AS TO ADVERSELY AFFECT UTILITY INSTALLATION, OPERATION AND MAINTENANCE.

ORANGE CITY UTILITY NOTES

1. THE CITY OF ORANGE CITY IS THE RETAIL UTILITY SERVICE PROVIDER FOR POTABLE WATER, RECLAIMED WATER, AND SANITARY SEWER UTILITIES FOR THE SUBJECT PROPERTY. THEREFORE, THE CITY WILL CALCULATE AND COLLECT ALL UTILITY IMPACT FEES, CONNECTION FEES, AND MONTHLY BILLING. HOWEVER, IN SOME LOCATIONS, THE EXISTING UTILITY INFRASTRUCTURE THAT IS AVAILABLE FOR CONNECTION OF THIS PROJECT MAY BE OWNED AND MAINTAINED BY VOLUSIA COUNTY UTILITIES (VCU). AT POINTS OF CONNECTION TO SYSTEMS OWNED & OPERATED BY VCU, THE ASSOCIATED CONSTRUCTION DETAILS SHOULD BE SPECIFIED PER VCU UTILITY STANDARDS, IN LIEU OF PER CITY STANDARDS, AND ADDITIONAL METERING MAY BE REQUIRED. IN ADDITION, THE APPLICANT IS RESPONSIBLE FOR COORDINATING WITH VCU TO DETERMINE SUFFICIENT CAPACITY IS AVAILABLE WITHIN THE MAINS, AND FOR DETERMINING WHAT (IF ANY) ADDITIONAL IMPROVEMENTS ARE REQUIRED IN ORDER TO SERVE THE PROJECT, SUCH AS MAIN EXTENSIONS, REPAIR/REPLACEMENT OF MAIN SEGMENTS, BOOSTER PUMPS, ETC. A SUMMARY OF EXISTING INFRASTRUCTURE IS PROVIDED BELOW:
 - a. THE CITY OF ORANGE CITY OWNS AND MAINTAINS A 12" POTABLE WATER MAIN LOCATED ON THE NORTH SIDE OF W. RHODE ISLAND AVE., WHICH IS AVAILABLE FOR CONNECTION.
 - b. THE CITY OF ORANGE CITY OWNS AND MAINTAINS A 12" SANITARY SEWER FORCEMAIN LOCATED ON THE SOUTH SIDE OF W. RHODE ISLAND AV. WHICH IS AVAILABLE FOR CONNECTION.
 - c. VOLUSIA COUNTY UTILITIES OWNS AND MAINTAINS A 12" RECLAIMED WATER MAIN LOCATED ON THE NORTH SIDE OF W. RHODE ISLAND AV. WHICH IS AVAILABLE FOR CONNECTION.
2. CONTRACTOR IS RESPONSIBLE FOR FURNISHING ALL VALVE WRENCHES REQUIRED TO ADEQUATELY OPERATE THE POTABLE WATER SYSTEM DURING CONSTRUCTION FOR INSPECTION AND TESTING BY THE CITY OF ORANGE CITY. THIS INCLUDES FURNISHING AT LEAST ONE (1) ADDITIONAL VALVE WRENCH TO REACH THE DEEPEST VALVE ON THE PROJECT, PLUS ONE (1) ADDITIONAL WRENCH FOR EVERY 10 ADDITIONAL VALVES INCLUDED IN THE PROJECT.
3. CONTRACTOR IS RESPONSIBLE FOR FURNISHING ALL FIRE HYDRANT WRENCHES REQUIRED TO ADEQUATELY OPERATE THE POTABLE WATER SYSTEM DURING CONSTRUCTION FOR INSPECTION AND TESTING BY THE CITY OF ORANGE CITY. THIS INCLUDES FURNISHING AT LEAST ONE (1) FIRE HYDRANT WRENCH FOR EVERY 10 FIRE HYDRANTS INCLUDED IN THE PROJECT.
4. ORANGE CITY UTILITIES WILL INSTALL 3/4" AND 1" WATER METERS. ALL METERS 1-1/2" AND LARGER ARE TO BE INSTALLED BY THE CONTRACTOR.
5. CITY OF ORANGE CITY WILL FURNISH METER BOXES FOR 3/4" AND 1" WATER METERS, BUT CONTRACTOR IS RESPONSIBLE FOR INSTALLING ALL METER BOXES, CORP STOPS, SERVICE PIPING, CURB STOPS, YOKES, AND DUAL CHECK VALVE ASSEMBLIES.
6. EVERY POTABLE WATER CONNECTION MUST HAVE A DUAL CHECK BACKFLOW PREVENTION (BFP) DEVICE. CONTRACTOR IS RESPONSIBLE FOR FURNISHING AND INSTALLING ALL BFP'S. ONCE CONSTRUCTED, ALL BFP'S WILL BE PRIVATELY OWNED AND MAINTAINED BY THE UTILITY CUSTOMER, WHO BEARS THE RESPONSIBILITY FOR COMPLETING REGULAR INSPECTIONS AND REPLACEMENT OF THE DEVICES.

CONTRACTOR NOTES

1. BEFORE BEGINNING SITE WORK, THE CONTRACTOR IS REQUIRED TO FIELD VERIFY THE EXISTENCE AND LOCATION OF UNDERGROUND UTILITIES AND OTHER FEATURES. THE CONTRACTOR MAY CONSULT THE UTILITIES OWNER'S RECORD DRAWINGS BUT THE UTILITY OWNER AND THE ENGINEER DO NOT GUARANTEE, BY IMPLICATION OR OTHERWISE, THE ACCURACY OF THE UTILITY OWNER'S RECORD DRAWINGS. THE SITE CONTRACTOR SHALL BE FINANCIALLY RESPONSIBLE FOR ANY MODIFICATION REQUIRED, OTHER THAN SHOWN ON PLANS.
2. CONTRACTOR SHALL COORDINATE WITH ARCHITECTURAL PLANS PRIOR TO CONSTRUCTION TO CONFIRM LOCATIONS OF UTILITY AND STORM DRAINAGE FROM BUILDING. IF ANY SUBSTANTIAL DEVIATIONS FROM THIS PLAN, NOTIFY ENGINEER AND OBTAIN WRITTEN INSTRUCTIONS PRIOR TO START OF CONSTRUCTION.
3. PRIOR TO COMMENCEMENT OF UTILITY SITE CONSTRUCTION, THREE COPIES OF SHOP DRAWINGS, IN ADDITION TO ANY COPIES REQUIRED BY THE APPLICANT SHALL BE SUBMITTED TO THE UTILITY DEPARTMENT FOR REVIEW AND APPROVAL.

NO.	DATE	REVISIONS
1		
2		
3		
4		
5		

UTILITY PLAN
 7 ELEVEN @ VOLUSIA AVE. AND RHODE ISLAND AVE.
 ORANGE CITY, FLORIDA
 RKM DEVELOPMENT

Engineering Consultants
 PO Box 450006 • Kissimmee, Florida 34745
 Phone: (407) 738-1979 • Fax: (407) 348-7552

THESE PLANS MAY NOT BE COPIED OR MODIFIED WITHOUT WRITTEN PERMISSION FROM CADAJEZ ENGINEERING
 SEAL
 NOT VALID UNLESS SIGNED & SEALED BY A REGISTERED ENGINEER CADAJEZ, LLC CERTIFICATION OF AUTHORIZATION # 28369

