



Architecture Planning Interiors Research
50 South B.B. King Boulevard
Memphis, Tennessee 38103
Telephone 901.521.1440
Fax 901.525.2760
E-mail info@lrk.com

Client:
McCormack Baron Salazar

720 Olive St, Suite 2500
St. Louis, MO 63101

Issues and Revisions

Date	Issued / Revised
03/16/2020	50% CONSTRUCTION DOCUMENTS
05/18/2020	80% CONSTRUCTION DOCUMENTS
07/13/2020	PERMIT

BUILDING ADDRESSES

TYPE	ADDRESS
TYPE G-B	442, 444, 446, 448 BATHURST LANE
TYPE H-A	324, 296, 236, 330 ISHAMEL PLACE
TYPE H-B	324, 440 VANCE AVE
TYPE H-C	315, 364 FOOTE LANE
TYPE H-D	363 S DANNY THOMAS BLVD
TYPE H-E	365, 431 VANCE AVE
TYPE H-F	315 BRIMWELL PLACE
TYPE H-G	327 ISHAMEL PLACE
TYPE H-H	420, 355 FOOTE LANE
TYPE H-I	363 S DANNY THOMAS BLVD
TYPE H-J	402, 428 FOOTE LANE

©2020 LRK Inc.
Drawings, written material, and design concepts shall not be used or reproduced in whole or part in any form or format without prior written consent of LRK Inc. Do not scale drawings. Use given dimensions only. If not shown, verify correct dimensions with the Architect. Contractor shall check and verify all dimensions and conditions at job.



LRK Project Number: 01.15100.02

Project Name:
South City CNI Phase 4
Memphis TN

Drawing Name:
ELECTRICAL PANEL SCHEDULES - BUILDING M-A

Drawn By: PTH
Checked By: RJH

MA-E306

- DRAWING NOTES**
- PLEASE REFER TO SHEET E000 FOR PROJECT NOTES, LEGEND, AND ABBREVIATIONS.
 - PANEL SCHEDULES ARE REPRESENTATIVE OF THE TYPE OF UNIT. INDIVIDUAL UNITS MAY VARY SLIGHTLY.
 - PANEL DOORS SHALL BE FACTORY FINISH WHITE WITH FACTORY FINISH WHITE SCREWS AND WHITE PLASTIC LATCH.
 - PANEL DIRECTORY SHALL BE NEATLY PRINTED OR TYPED ON EACH PANEL DOOR.
 - THE "HOUSE" PANELS COVER UP TO THREE BUILDINGS AND MAY CONTAIN THE CIRCUITS FOR THE FOLLOWING: GFCI RECEPTACLES AT ALL HEAT PUMPS, FRONT PORCH AND BREEZEWAY LIGHTS, POWER FOR SECURITY CAMERAS, POWER FOR AUTO GATE OPENER, POWER FOR MAN GATE AND ACCESS CONTROL, SPRINKLER ROOM VALVES, SPRINKLER ROOM WALL HEATER, SPRINKLER ROOM LIGHT AND RECEPTACLES, SPRINKLER ROOM ACCESS CONTROL, IRRIGATION CONTROLLER, SIGN/MONUMENT LIGHT, ETC.
 - REFER TO SHEET E006 FOR UNIT PANEL CALCULATIONS.

Branch Panel: HMA

Location: Vols: 120/240 Single
Supply From: Phases: 1
Mounting: Recessed Wires: 3
Enclosure: NEMA 3R
A.I.C. Rating: 10K Mains Type: MCB
Mains Rating: 100 A
MCB Rating: 100 A

Notes: ALL BREAKERS AFI TYPE

CKT	Circuit Description	Trip	Poles	A	B	Poles	Trip	Circuit Description	CKT
HJA-1	Receptacle	20 A	1	360 VA	180 VA	1	20 A		HJA-2
HJA-3		20 A	1		180 VA	360 VA	1	20 A	Receptacle
HJA-5		20 A	1				1	20 A	Receptacle
HJA-7	Receptacle	20 A	1	180 VA	180 VA	180 VA	360 VA	1	20 A
HJA-9	Receptacle	20 A	1	180 VA	180 VA	180 VA	360 VA	1	20 A
HJA-11	Other	20 A	1	180 VA	180 VA	180 VA	360 VA	1	20 A
HJA-13	Spare	20 A	1	0 VA	0 VA	0 VA	0 VA	1	20 A
HJA-15	Spare	20 A	1	0 VA	0 VA	0 VA	0 VA	1	20 A
HJA-17	Spare	20 A	1	0 VA	0 VA	0 VA	0 VA	1	20 A
HJA-19	HVAC	20 A	1	0 VA	0 VA	0 VA	0 VA	1	20 A
HJA-21		20 A	1	180 VA	180 VA	180 VA	360 VA	1	20 A
HJA-23		20 A	1					1	20 A
HJA-25		20 A	1					1	20 A
HJA-27		20 A	1					1	20 A
HJA-29		20 A	1					1	20 A
Total Load:				900 VA	4364 VA				
Total Amps:				8 A	36 A				

Load Classification	Connected Load	Demand Factor	Estimated Demand	Panel Totals
HVAC	3000 VA	100.00%	3000 VA	
Other	104 VA	100.00%	104 VA	
Receptacle	1980 VA	100.00%	1980 VA	Total Conn. Load: 5263 VA
Lighting	290 VA	100.00%	290 VA	Total Est. Demand: 5263 VA
				Total Conn.: 22 A
				Total Est. Demand: 22 A

BUILDING MA ENDS
(3 METER BANKS EACH BUILDING)

1. LIGHTING LOADS
GENERAL LIGHTING & GENERAL RECEPTACLE LOADS
Per NEC 2011 Article 220.84
7548 SF x 3 VA/SF x 100% = 22644 VA

2. SMALL BRANCH AND LAUNDRY CIRCUITS
SMALL APPLIANCE BRANCH CIRCUIT AND LAUNDRY CIRCUIT
Circuits per NEC 2011 Article 210.11 (1)&(2)
18 x 1500 VA = 27000 VA

3. NAMEPLATE LOADS
APPLIANCE = 21570 x 100% = 21570
RANGE = 39000 x 100% = 39000
DRYER = 30000 x 100% = 30000
WATER HEATER = 27000 x 100% = 27000
TOTAL = 117570 VA

4. OTHER PERMANENTLY CONNECTED MOTORS
MOTOR = 600 x 100% = 600

5. AIR CONDITIONER OR SPACE HEATING LOAD (LARGER OF THE TWO)
HVAC = 57960 x 100% = 57960
TOTAL = 225774 VA

DEMAND FACTORS FOR THREE OR MORE MULTIFAMILY DWELLING UNITS:
3-5 45%
6-7 44%
8-10 43%

HOUSE PANEL = 4500 VA

CALCULATED TOTALS X DIVERSITY FACTOR PLUS HOUSE PANEL:
= 103840.6 VA
= 432.7 A

BUILDING MA CENTER (12 UNITS)
(3 METER BANKS EACH BUILDING)

1. LIGHTING LOADS
GENERAL LIGHTING & GENERAL RECEPTACLE LOADS
Per NEC 2011 Article 220.84
10488.75 SF x 3 VA/SF x 100% = 31466.25 VA

2. SMALL BRANCH AND LAUNDRY CIRCUITS
SMALL APPLIANCE BRANCH CIRCUIT AND LAUNDRY CIRCUIT
Circuits per NEC 2011 Article 210.11 (1)&(2)
30 x 1500 VA = 45000 VA

3. NAMEPLATE LOADS
APPLIANCE = 43140 x 100% = 43140
RANGE = 78000 x 100% = 78000
DRYER = 60000 x 100% = 60000
WATER HEATER = 54000 x 100% = 54000
TOTAL = 235140 VA

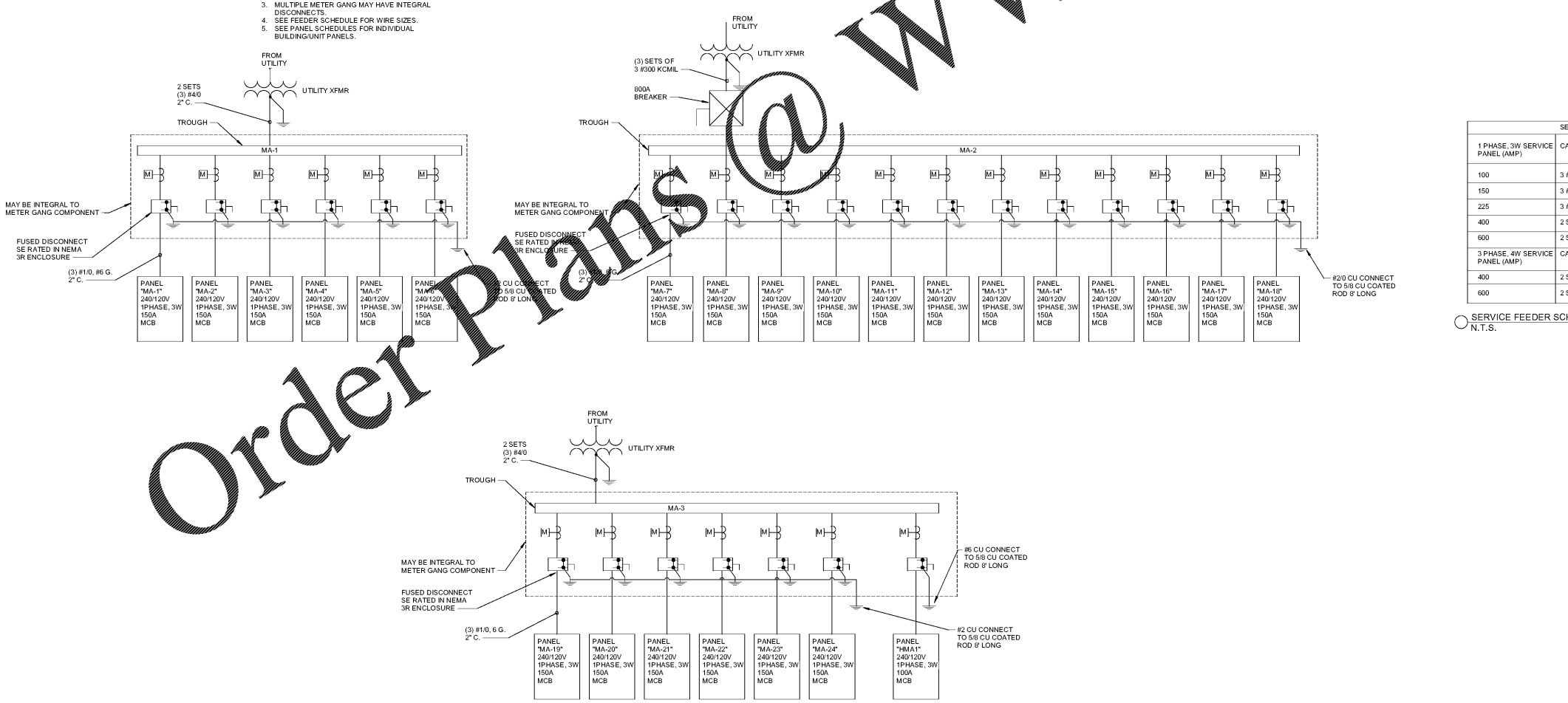
4. OTHER PERMANENTLY CONNECTED MOTORS
MOTOR = 1200 x 100% = 1200

5. AIR CONDITIONER OR SPACE HEATING LOAD (LARGER OF THE TWO)
HVAC = 115920 x 100% = 115920
TOTAL = 447262.5 VA

DEMAND FACTORS FOR THREE OR MORE MULTIFAMILY DWELLING UNITS:
3-5 45%
6-7 44%
8-10 43%

CALCULATED TOTALS X DIVERSITY FACTOR PLUS HOUSE PANEL:
= 188222.5 VA
= 784.1 A

- NOTES:**
- ALL CABLING, CONDUIT AND TRANSFORMERS AHEAD OF THE METER GANG SHALL BE BY MLGW.
 - METER SOCKETS SHALL BE INSTALLED BY CONTRACTOR. INSTALLATION SHALL BE PER MLGW STANDARDS.
 - MULTIPLE METER GANG MAY HAVE INTEGRAL DISCONNECTS.
 - SEE FEEDER SCHEDULE FOR WIRE SIZES.
 - SEE PANEL SCHEDULES FOR INDIVIDUAL BUILDING/UNIT PANELS.



SERVICE FEEDER SCHEDULE

1 PHASE, 3W SERVICE PANEL (AMP)	CABLE/CONDUCTORS	CONDUIT	SERVICE GROUND	EQUIPMENT GROUND
100	3 #2	1 1/4"	#8	#8
150	3 #10	2"	#6	#6
225	3 #40	2 1/2"	#2	#4
400	2 SETS OF 3 #30	2" EA.	#10	#3
600	2 SETS OF 3 #350 KCMIL	3" EA.	#20	#1

3 PHASE, 4W SERVICE PANEL (AMP)	CABLE/CONDUCTORS	CONDUIT	SERVICE GROUND	EQUIPMENT GROUND
400	2 SETS OF 4 #30	2 1/2" EA	#10	#3
600	2 SETS OF 4 #350 KCMIL	3" EA	#30	#1

○ SERVICE FEEDER SCHEDULE
N.T.S.

Order Plans

WWW.LDIDLINE.COM