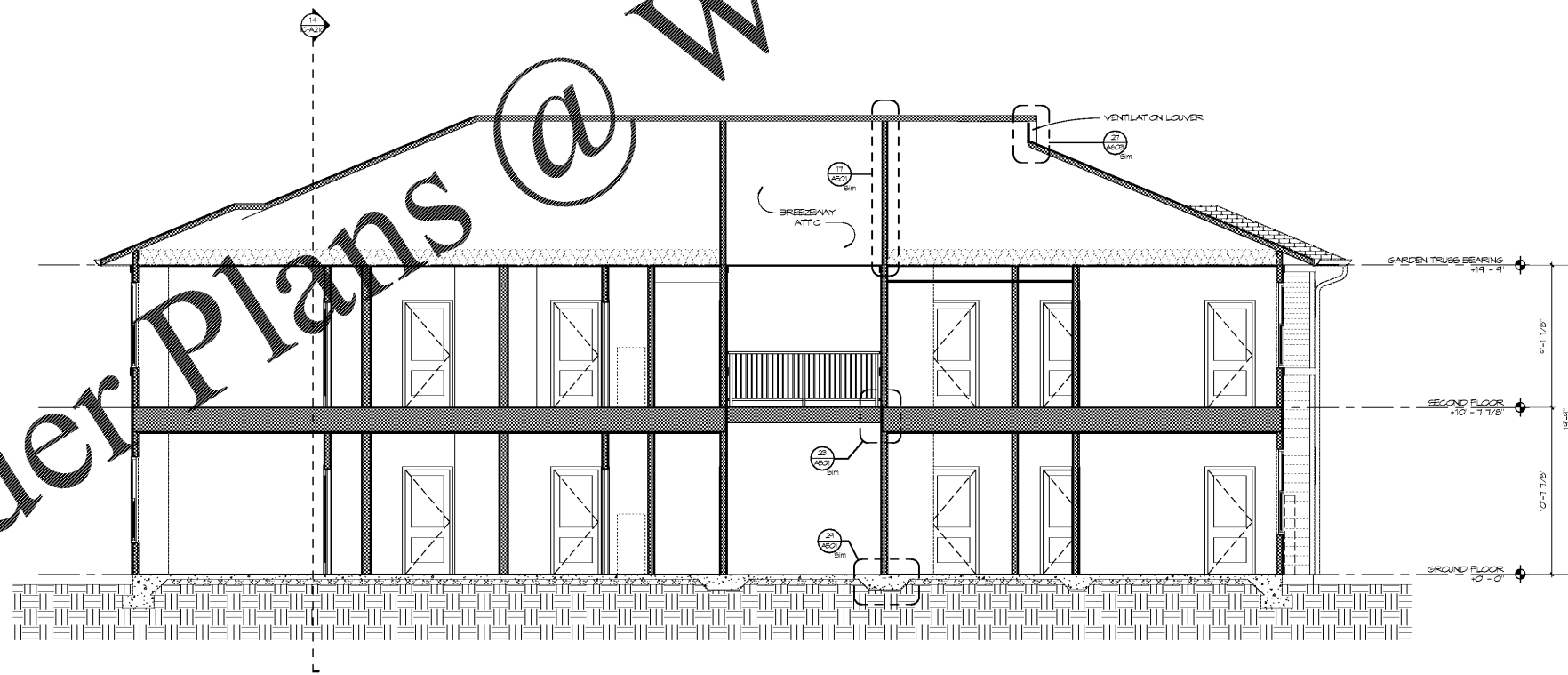


14 IC TRANSVERSE SECTION 1
SCALE: 1/4" = 1'-0"



26 IC LONGITUDINAL SECTION
SCALE: 1/4" = 1'-0"

Order Plans @ WWW.LDILine.com



Architecture Planning Interiors Research
50 South B.B. King Boulevard
Memphis, Tennessee 38103
Telephone 901 521 1440
Fax 901 525 2760
E-mail info@lrk.com

Client:
McCormack Baron Salazar

720 Olive St Suite 2500
St. Louis, MO 63101

Issues and Revisions

Date	Issued / Revised
3/16/2020	50% CONSTRUCTION DOCS
5/18/2020	80% CONSTRUCTION DOCS
7/13/2020	PERMIT SUBMISSION

BUILDING ADDRESSES

TYPE G-2	442, 444, 446, 448 RATLIFF LANE
TYPE G-2	324, 236, 238, 330 SHAWEL PLACE
TYPE G-2	378, 448 VANCE AVE
TYPE G-2	316, 304 FOOTELANE
TYPE G-2	388 S DANNY THOMAS BLVD
TYPE G-2	366, 491 VANCE AVE
TYPE G-2	378 SHAWEL PLACE
TYPE G-2	321 SHAWEL PLACE
TYPE G-2	450, 380 FOOTELANE
TYPE G-2	345 S DANNY THOMAS BLVD
TYPE G-2	402, 406 FOOTELANE

©2020 LRK, Inc.
Drawings, written material, and design concepts shall not be used or reproduced in whole or part in any form or format without prior written consent of LRK, Inc. Do not scale drawings. Use given dimensions only. If not shown, verify correct dimensions with the Architect. Contractor shall check and verify all dimensions and conditions of job site.

Seal



LRK Project Number: 01.15100.43

Project Name:
South City CNI Phase 4

Memphis TN

Drawing Name:
BUILDING SECTIONS

Drawn By: ADB
Checked By: HJL

IC-A210